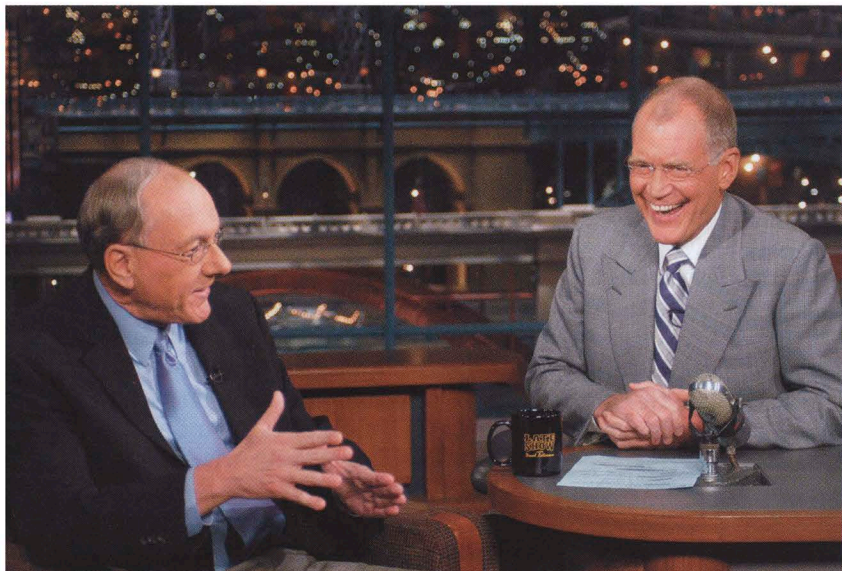


QuadAngles

Compiled from SU news reports



Courtesy of SU Athletics

Late Night COACH

SU men's basketball coach Jim Boeheim '66, G'73 gets a chuckle out of David Letterman during an appearance on the comic's talk show, a week after the Orangemen upended Kansas to win the NCAA tournament.

Faculty HONORS

Several faculty members and a longtime dean were awarded titled professorships this year, recognizing their scholarly accomplishments and contributions to their respective fields:

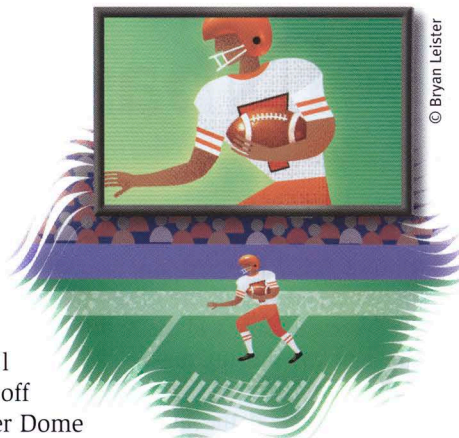
- University Professor—John L. Palmer, outgoing dean of the Maxwell School and a member of the Department of Economics and the public administration program; and Peter G. Simpkins of the Department of Mechanical, Aerospace, and Manufacturing Engineering in the L.C. Smith College of Engineering and Computer Science.
- Distinguished Professor—Robert C. Bogdan G'64, G'71, who holds a dual appointment in the Department of Sociology in the Maxwell School and the cultural foundations of education program in the School of Education; and Patricia Waddy of the School of Architecture.
- Alumni Associate Professor—Suzanne B. Mettler of the Department of Political Science in the Maxwell School and the College of Arts and Sciences; and Geoffrey Seltzer of the Department of Earth Sciences in the College of Arts and Sciences.
- Meredith Professor for Teaching Excellence—Stuart Bretschneider of the public administration program in the Maxwell School; and Joanna O. Masingila of the Department of Mathematics in the College of Arts and Sciences and the mathematics education program in the School of Education.

Video VIEW

When the football season kicks off this fall, Carrier Dome spectators will have the opportunity to review big plays, thanks to two video replay boards that are being installed in the Dome this summer. "We know our fans have wanted video boards for some time," says Director of Athletics Jake Crouthamel. "This is another step in our continuous effort to improve the entertainment value of events in the Carrier Dome."

The two Daktronics video boards will be permanently affixed in the northwest and southeast corners of the Dome and will feature live video, instant replay, graphics, animation, player statistics, and out-of-town scores. The video boards will also be linked to television monitors installed in the 100 and 200 sections of the end zones for fans seated below the overhangs.

The project costs more than \$1 million, in addition to significant annual operating expenses. "Our investment today will provide immediate returns for our fans and the community," Crouthamel says.



© Bryan Leister

War TALK

Many questions and concerns regarding the conflict in Iraq were addressed in a seven-part University forum that, coincidentally, commenced on the anniversary of the Gulf War and ended as a new post-war Iraq began to emerge.

The series, Syracuse University Forums: War in Iraq, featured seven events aimed at educating the community about the many facets of the conflict between the United States and Iraq. Forum topics included a historical overview of Iraq; media coverage of the war; foreign policy and civil liberties; student perspectives; and strategy, tactics, and

ethics. SU faculty and staff experts on these issues came together to share their perspectives on the situation in Iraq in an impartial atmosphere.

"Syracuse University has long been a place where controversial issues can be discussed and debated openly and freely," says Chancellor Kenneth A. Shaw. "We must take great care that this tradition is upheld. This means we remain open to others' ideas, regardless of our agreement or disagreement with them. It is essential that no one's voice be silenced because his or her views are not popular with the majority or with a vocal minority."

Chancellor RETIRING

After leading Syracuse University through a period of dramatic revitalization, Chancellor Kenneth A. “Buzz” Shaw has announced plans to retire from his position in August 2004. Shaw, who has guided SU since 1991, made the announcement to the Board of Trustees executive committee in April. “It’s been the greatest 13 years of my career as a president or chancellor,” says Shaw, who has nearly three decades of experience as a campus CEO. “This has been a fabulous opportunity.” Shaw will take a year’s leave of absence and then return to teach and assume other responsibilities. During his leave, he plans to develop a series of leadership activities that he’d like to teach when he returns to the classroom.

Board of Trustees Chairman Joseph O. Lampe ’53, G’55, is chairing a search committee composed of 21 members of the SU community to appoint the Chancellor’s successor. Korn/Ferry International, the world’s leading management consulting

firm specializing in executive recruitment, has been hired to serve as a search consultant. “Chancellor Shaw led by example in restructuring the University during difficult times,” Lampe says. “Buzz is an outstanding leader—one who combines a keen business sense with a strong academic background.”

Under Shaw’s leadership, SU emerged from the early ’90s having withstood budget cuts of more than \$60 million and the loss of some 600 jobs. Simultaneously, numerous initiatives were implemented to improve every facet of campus life. Today SU enjoys the results of these efforts—the learning environment has been transformed, facilities and technology improvements abound, services to students are more responsive, and the University has a greater national presence than ever before. The University’s endowment and fund-raising efforts

have grown substantially, too.

Shaw’s accomplishments have also been recognized by the higher education community. During his tenure, Syracuse received the Theodore M. Hesburgh Award for Faculty Development to Enhance Undergraduate Learning, and this year Shaw was honored by the Council for Advancement and Support of Education, District II, with its Chief Executive Leadership Award.

“In the coming months, I expect to intensify my efforts on behalf of the University,” Shaw says. “While much has been accomplished, much remains to be done.”

SU SURVEY

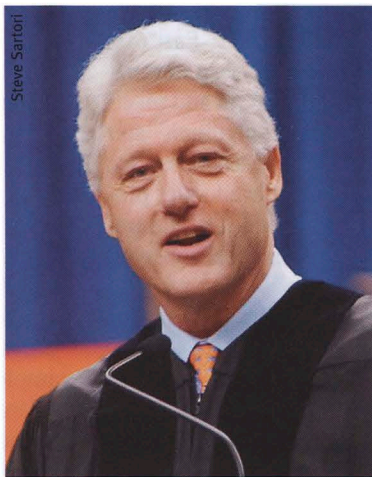
As the search process gets under way for Syracuse’s 11th Chancellor, the University would like to hear your thoughts on its greatest strengths, its challenges over the next five years, and the qualities and skills that should be possessed by its next leader. A special web page has been established for this purpose; you can access it at <http://sunews.syr.edu/chancellorsearch/index.html>.

Deans NAMED

Vice Chancellor and Provost Deborah A. Freund has appointed Louise C. Wilkinson as dean of the School of Education and Mitchel Wallerstein G’72 as dean of the Maxwell School.

Wilkinson, an expert in educational psychology and in language and literacy studies, was dean of the Graduate School of Education at Rutgers and Distinguished Professor of Educational Psychology. She holds Ed.M. and Ed.D. degrees in human development from Harvard. “Louise has long demonstrated her commitment to innovative, quality education,” Freund says. “I’m sure she will lead the school to further success.” She succeeds Interim Dean Emily Robertson G’81.

Wallerstein joins SU after serving for five years as vice president of the MacArthur Foundation, one of the world’s 10 largest philanthropic organizations. He has held positions with the Department of Defense, a policy think tank, and several academic institutions. He has an M.P.A. degree from Maxwell, and M.S. and Ph.D. degrees in political science from M.I.T. “Mitch has an impressive background,” Freund says. “He understands well all our audiences, because he has worked among them and excelled.” Wallerstein takes over for outgoing Dean John L. Palmer, who stepped down after 15 years in the post.



Presidential INSIGHT

“All of human history can be seen in part as a race between the forces of the builders and the forces of the wreckers....And every single time... the builders have prevailed. The people who believed in our independence have prevailed, the people who believed in our common humanity have prevailed. I want you to use your education to make sure that in the 21st century, we prevail.”

—Former President Bill Clinton, addressing the Class of 2003 at Commencement

Newhouse EXPANSION

A crowd of several hundred students, faculty, staff, and members of the press gathered in the Newhouse Communications Center atrium in April to hear Donald E. Newhouse ’51, president of Advance Communications, announce the S.I. Newhouse Foundation’s gift of \$15 million toward construction of a third building in SU’s public communications complex.

Newhouse III, as the building is already being called, will not only increase available classroom and office space, but also will offer an array of new facilities designed for the collaborative, multidisciplinary training necessary to meet the challenges of the digital communications age. “I want to put a stop to the rumor that this gift is the result of a bet I made with Chancellor Shaw on a basketball game in New Orleans,” Newhouse said. “I’d never bet against the Orange!” It was clear from the laughter of the crowd that everyone in the house could see that Newhouse was betting on the Orange—big time.