

Syracuse University

SURFACE at Syracuse University

Architecture Senior Theses

School of Architecture Dissertations and
Theses

Spring 5-2021

Dissolving Realities: An Endless Domestic Landscape

Hanzang Lai

Phang Lim

Follow this and additional works at: https://surface.syr.edu/architecture_theses



Part of the [Architectural Technology Commons](#), [Cultural Resource Management and Policy Analysis Commons](#), [Human Ecology Commons](#), [Place and Environment Commons](#), [Urban, Community and Regional Planning Commons](#), and the [Work, Economy and Organizations Commons](#)

Recommended Citation

Lai, Hanzang and Lim, Phang, "Dissolving Realities: An Endless Domestic Landscape" (2021). *Architecture Senior Theses*. 521.

https://surface.syr.edu/architecture_theses/521

This Thesis, Senior is brought to you for free and open access by the School of Architecture Dissertations and Theses at SURFACE at Syracuse University. It has been accepted for inclusion in Architecture Senior Theses by an authorized administrator of SURFACE at Syracuse University. For more information, please contact surface@syr.edu.



Dissolving Realities

An Endless Domestic Landscape

Hanzhang Lai & Phang Lim



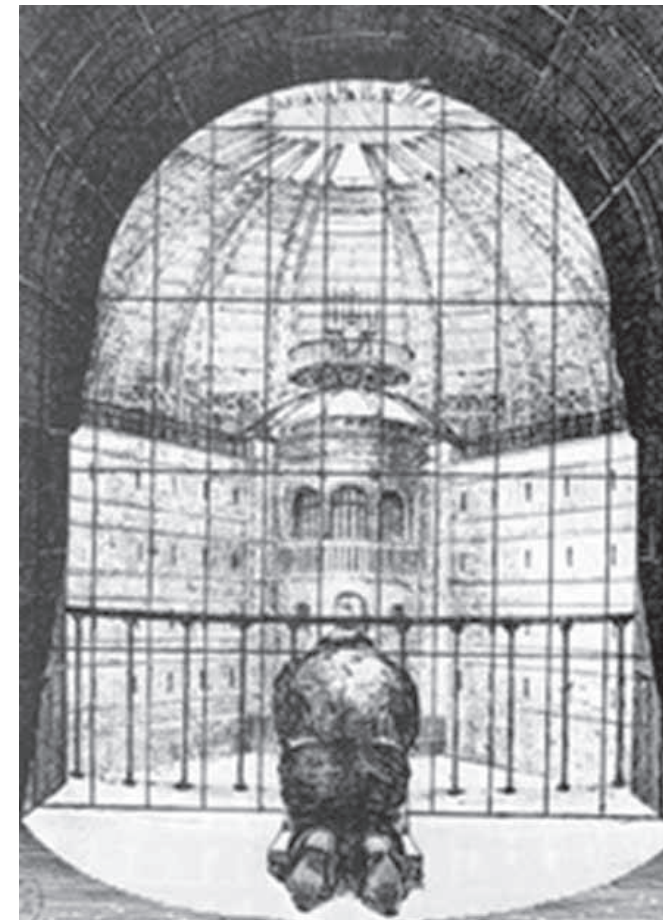
Contention

This thesis explores how the exponential growth in communication technology is changing the way we interact with the tangible and intangible spaces. The invasion of the public into the private, the collective into the domestic, the work into the leisure, and the ability to be constantly connected wirelessly have caused a dissolution of the physical domestic space. The domestic space has lost its value of privacy and intimacy and the boundary between the binaries will be no more. The gap between "the control" and "controlled" has widened and productive workers will be oppressed to be even more productive under the aid of communication technology. The house is a place of production that is less defined by the tangible, but rather with the objects and technology within itself.

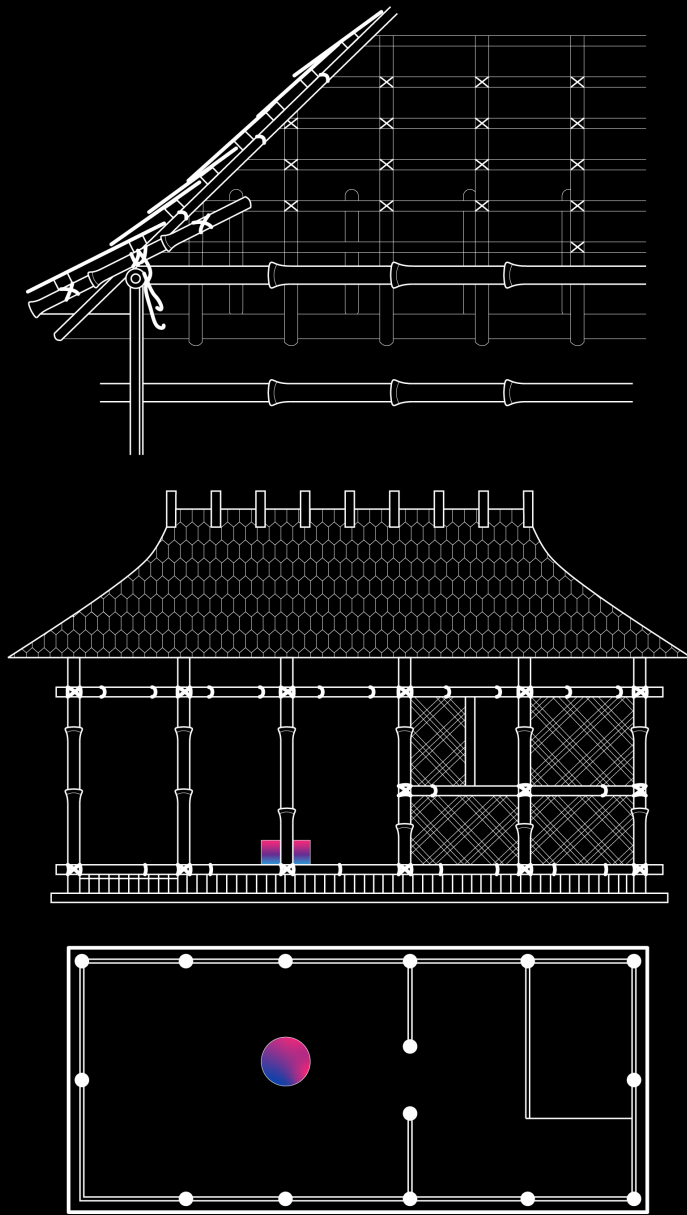
The rise in communication technology has enabled us to do things that we never thought possible and the definition of the hearth in the domestic have evolved drastically. The hearth which used to be the fireplace in the house has evolved into a technologically advanced device that enables us to

communicate and participate virtually as a collective. This thesis critiques the growth in communication technology and how it threatens the value of privacy within the domestic space. Technology companies such as Google and Facebook exploit its users by manipulating their personal information to their own benefit. These companies are virtual empires that are built upon user's data and could influence every inch of the globe. However, despite knowing that their personal information is being exploited, users are still using these communication technologies as a means of connection. A survey by the Pew Research Center shows that six-in-ten Americans believe it is not possible to go through daily life without having their data collected by private companies or the government; most are willing to share their data if they get something in return.

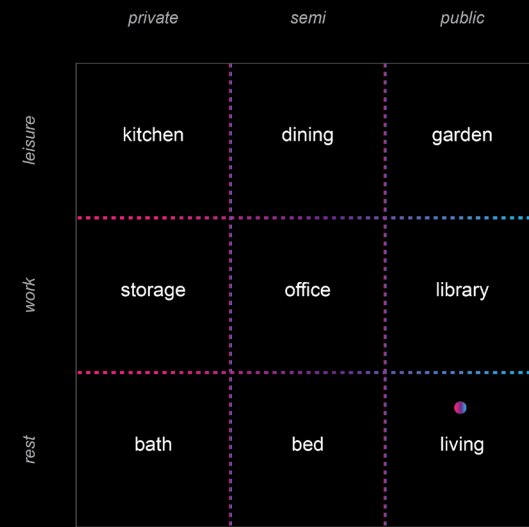
The thesis envisions a dystopian future where users are prisoners to their technologies. The project addresses issues such as privacy and domesticity in a satirical way by constructing a "tech company" and how it uses strategies to capitalize on its users.



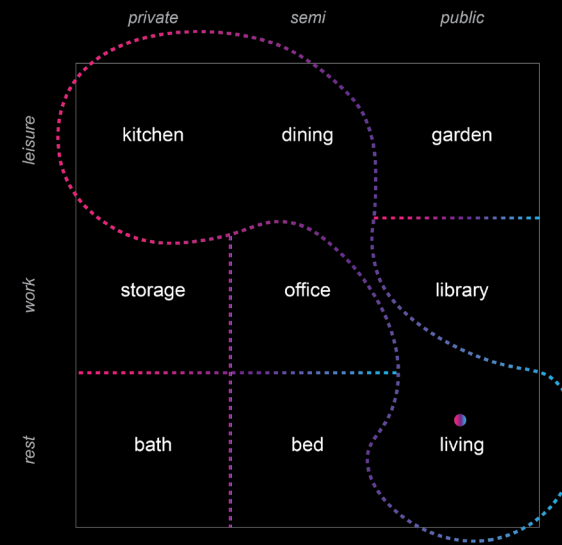
The penopticon in the domestic after the invasion of communication technology



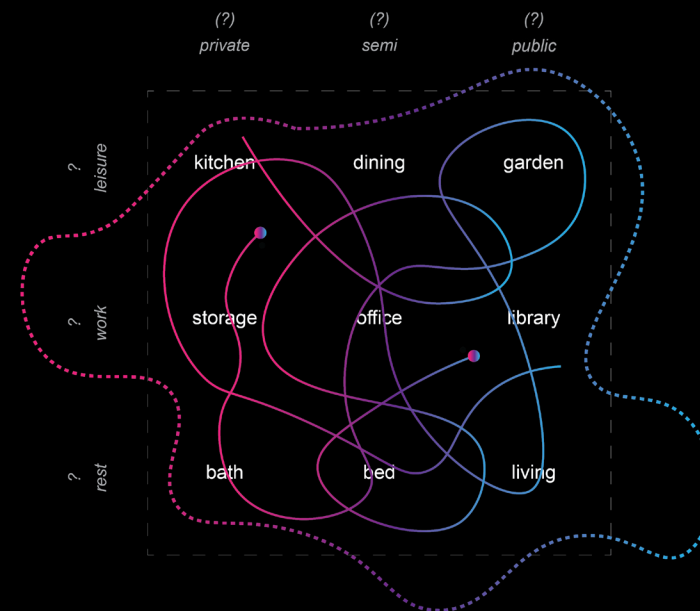
Gottfried Semper's Four Elements of Architecture



Programs within the domestic used to be divided strictly and each room has its own designated function.



However, with the introduction of communication technologies such as a radio and television, programs such as the kitchen, dining, and living started to blend. This causes a blur between private, public, work and leisure.



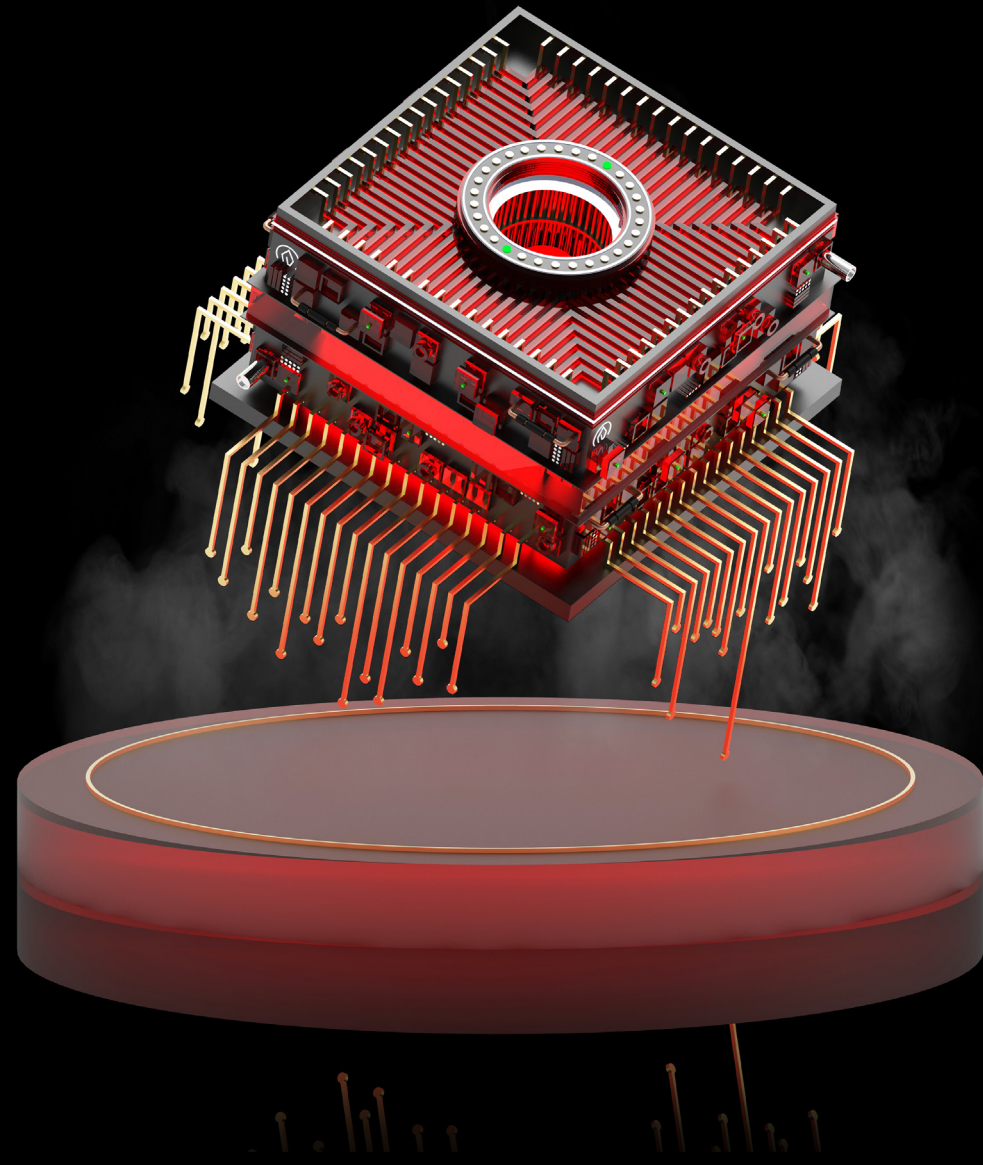
As communication technology is so available within our household, there's no definition of space and programs any more. We could use our communication technology whenever and wherever we go within the domestic realm.



The relationship between "the control" and "the controlled".



Aggregated Smart Home Devices

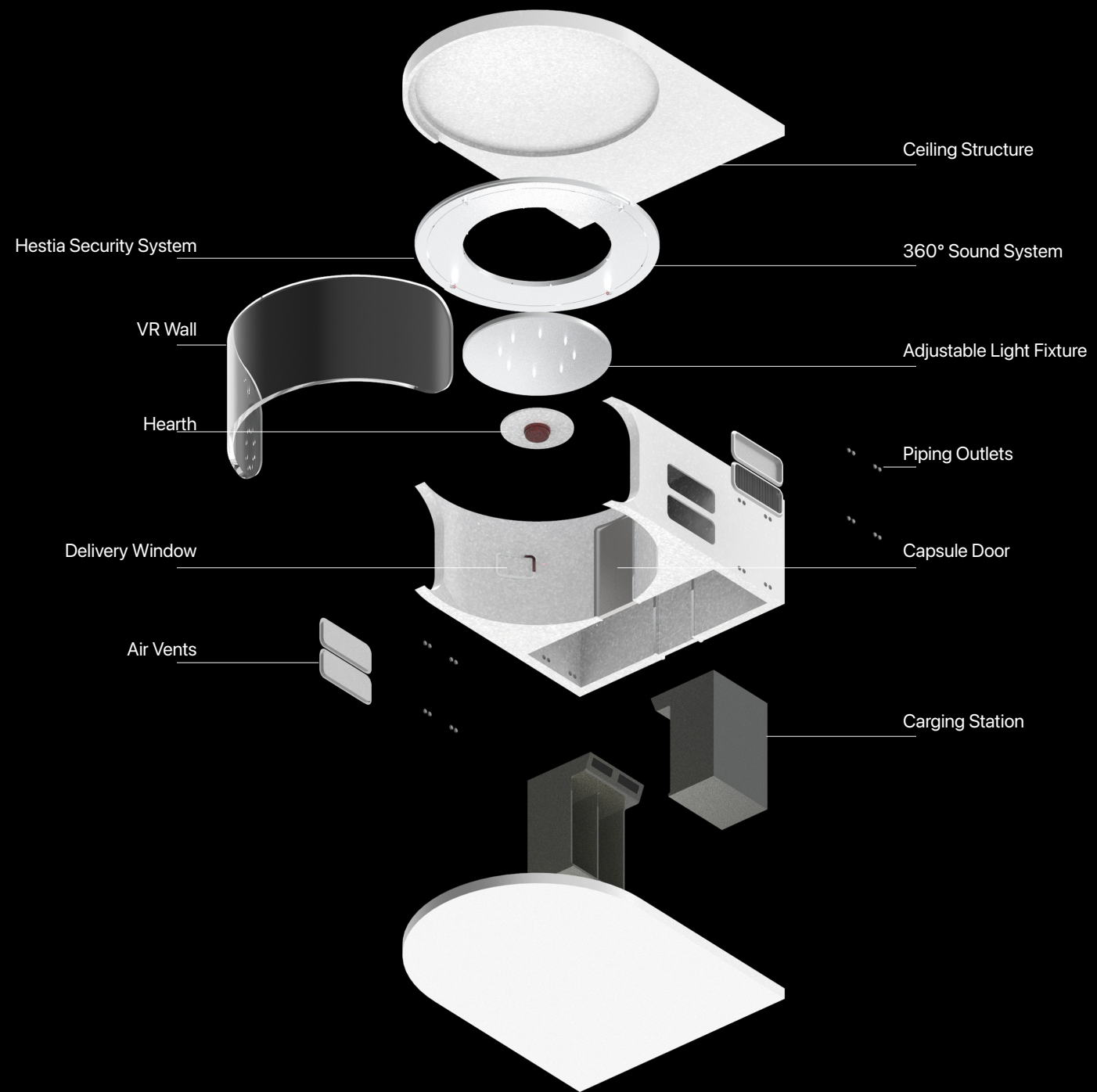


Hearth is a “tech company” constructed to address issues on privacy and domesticity. Hearth provides individual housings that enable users to be fully immersed into the virtual world. The concepts and marketing strategies are inspired by the 21st century capitalist technological climate

where companies compete for user activity. In this thesis, users have to give up their privacy and allow technology to control and govern their lives. Hearth’s operating system is named after the goddess of the hearth in Greek mythology., Hestia . Hestia OS is able to

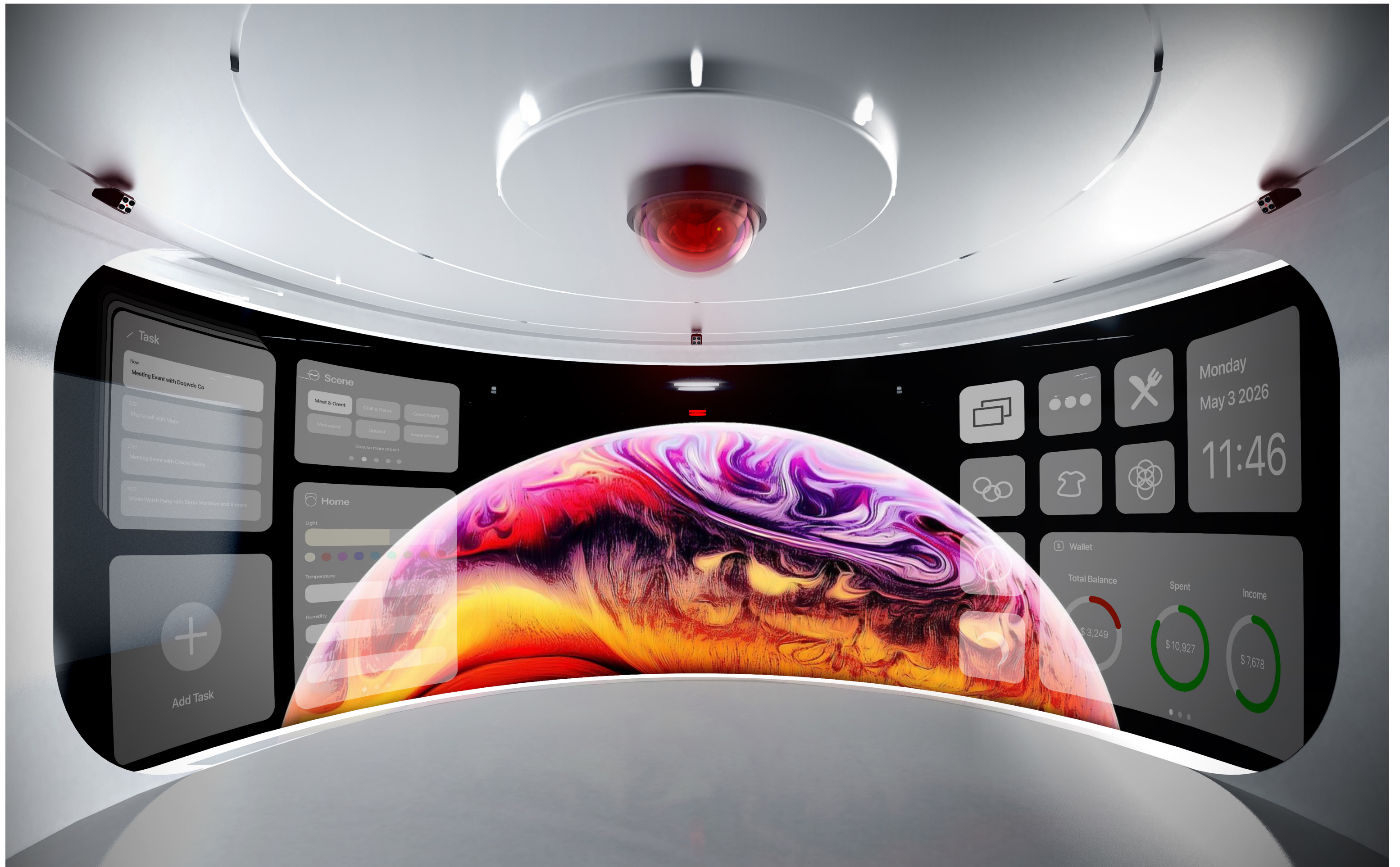
allow users to be instantly immersed into the virtual world and stay connected with the community within the domestic space. It grows and learns by monitoring users’ movements and habits, and satisfies their needs and desires. Hestia OS merges hardware and software, and creates a seamless

transition between Capsules, Shell and Services. All three components work together in a cycle to improve the users’ wellbeing in exchange for personal information and data. Once users sign up as a member with Hearth, they are trapped in the “utopian” reality crafted virtually by Hestia OS.



Axonometric render of the shell.





- ### Task
- Now
Meeting Event with Doqwide Co
 - 7:20
Phone call with Matt
 - 7:50
Meeting Event with Oracle Bailey
 - 6:00
Movie Watch Party with Dan's Marzoya and 9 more

Scene

Meet & Greet Chill & Relax Good Night

Motivated Upbeat Inspirational

Browse more preset

Home

Light

Temperature

Humidity

Icons for: Document, List, Dining, Rings, T-shirt, Knot

Monday
May 3 2026
11:46

Wallet

Total Balance	Spent	Income
\$ 3,249	\$ 10,927	\$ 7,678

+
Add Task





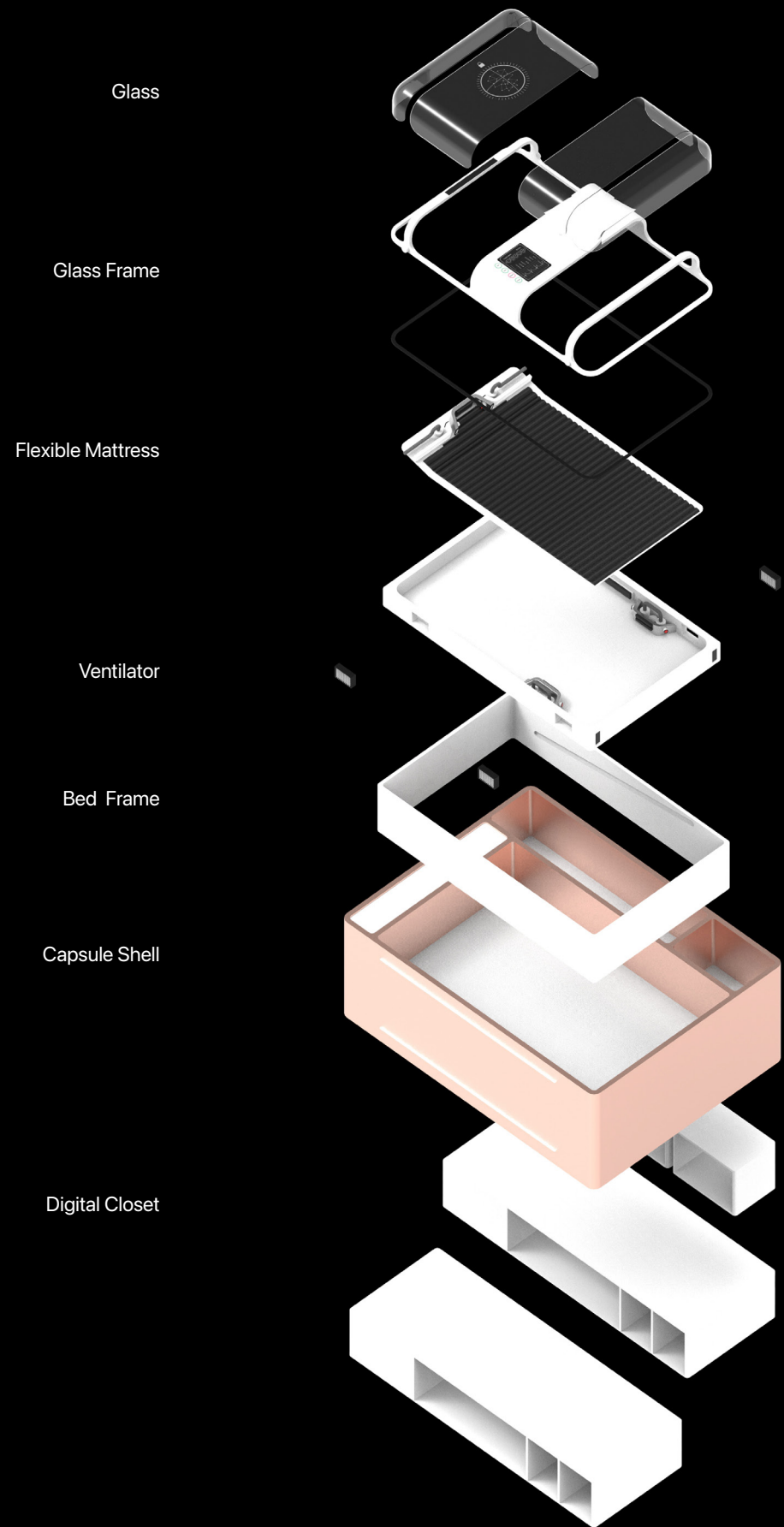
The Rejuvenate Capsule contains multiple sensors placed in strategic locations to ensure a better sleep. Not only does the latest sensors monitor the users' state of health, the sensors are able to collect and plant a dream as well. Hestia collects and analyzes users' dream when they're asleep and recommends purchasable dreams that they can plant whenever they want. On the other side of the Capsule is the Hestia Closet where users can purchase virtual outfits recommended by Hestia.

Rejuvenate Capsule

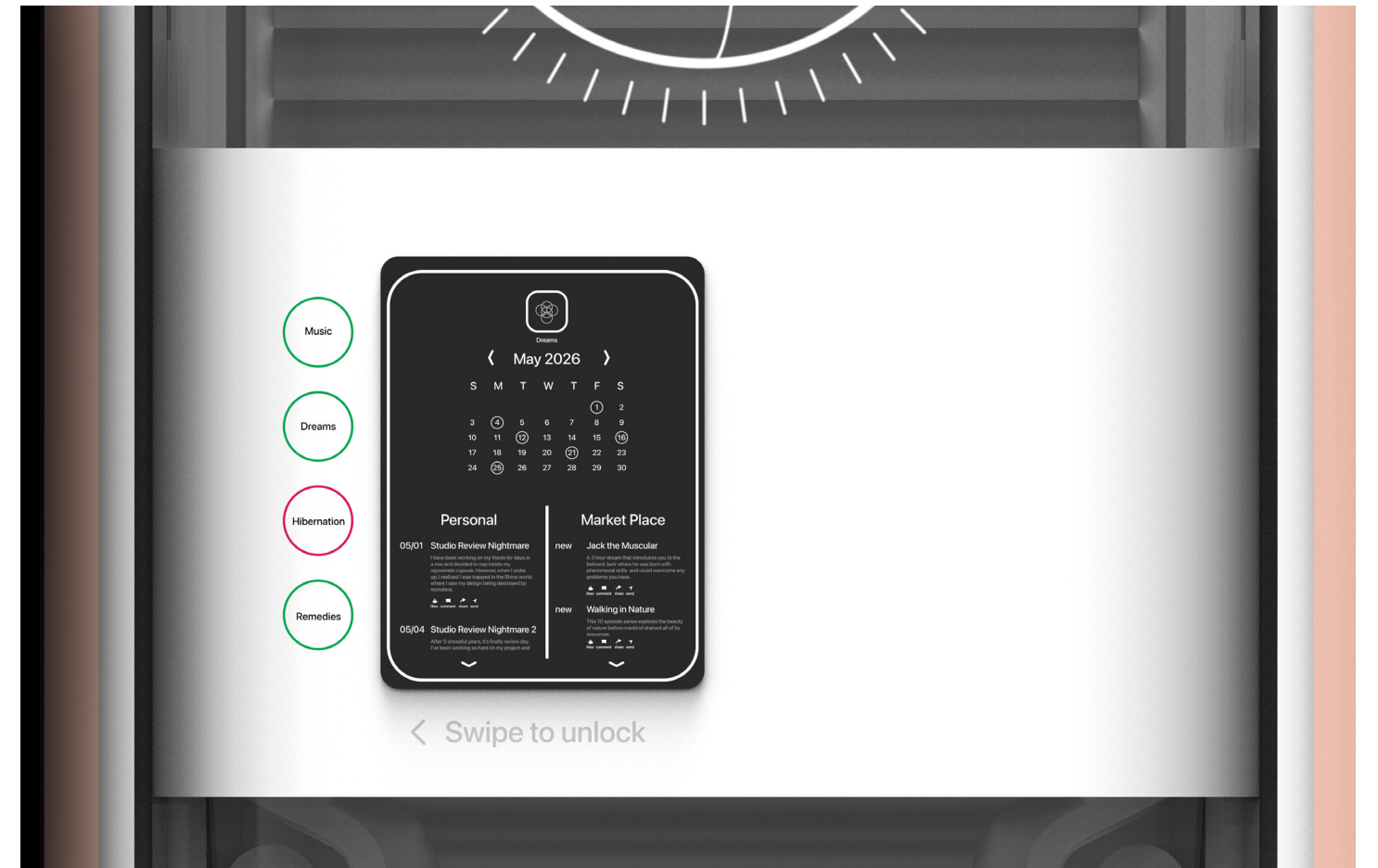


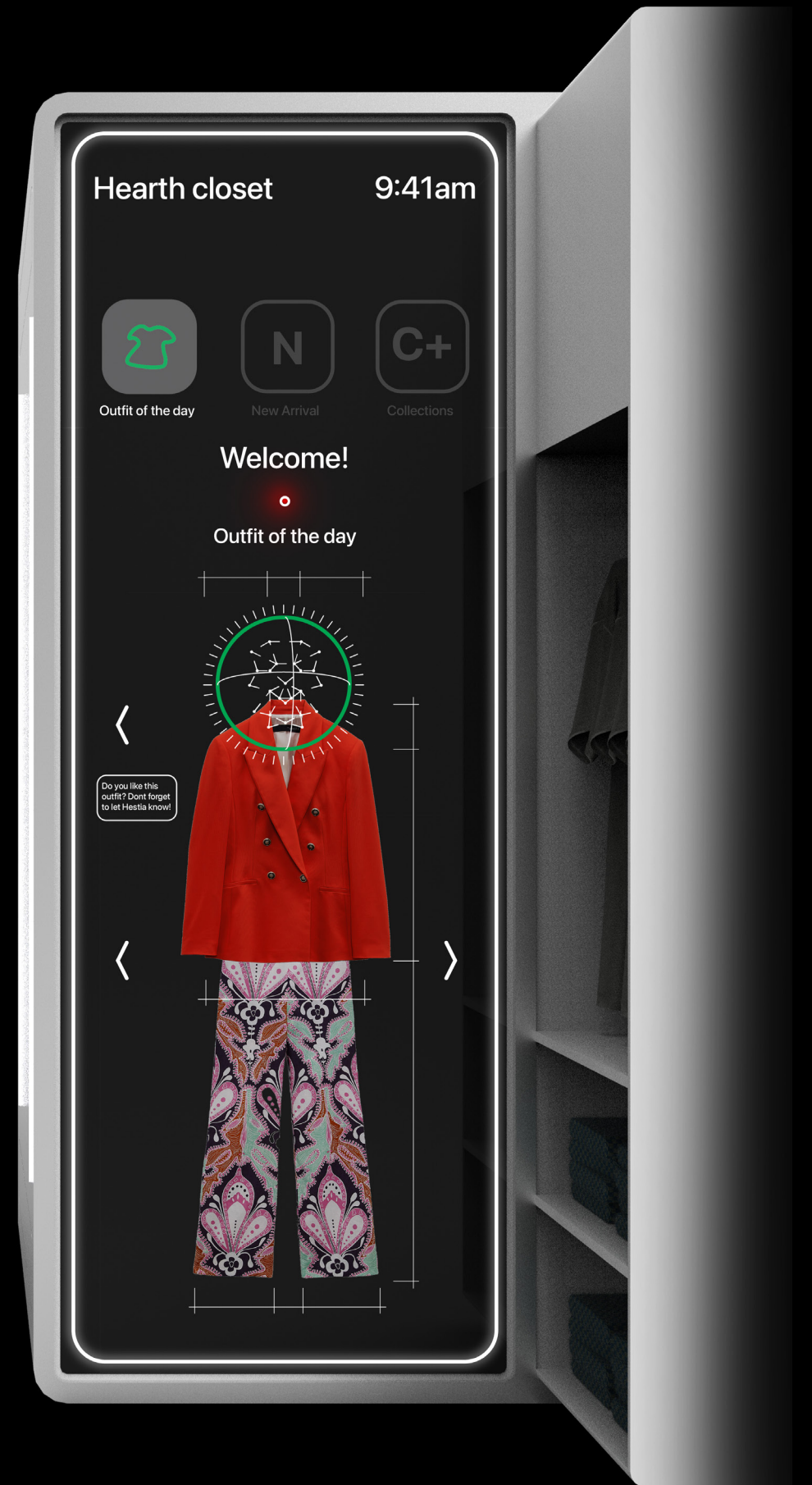
A more fruitful sleep.





Axonometric render of the Rejuvenate Capsule





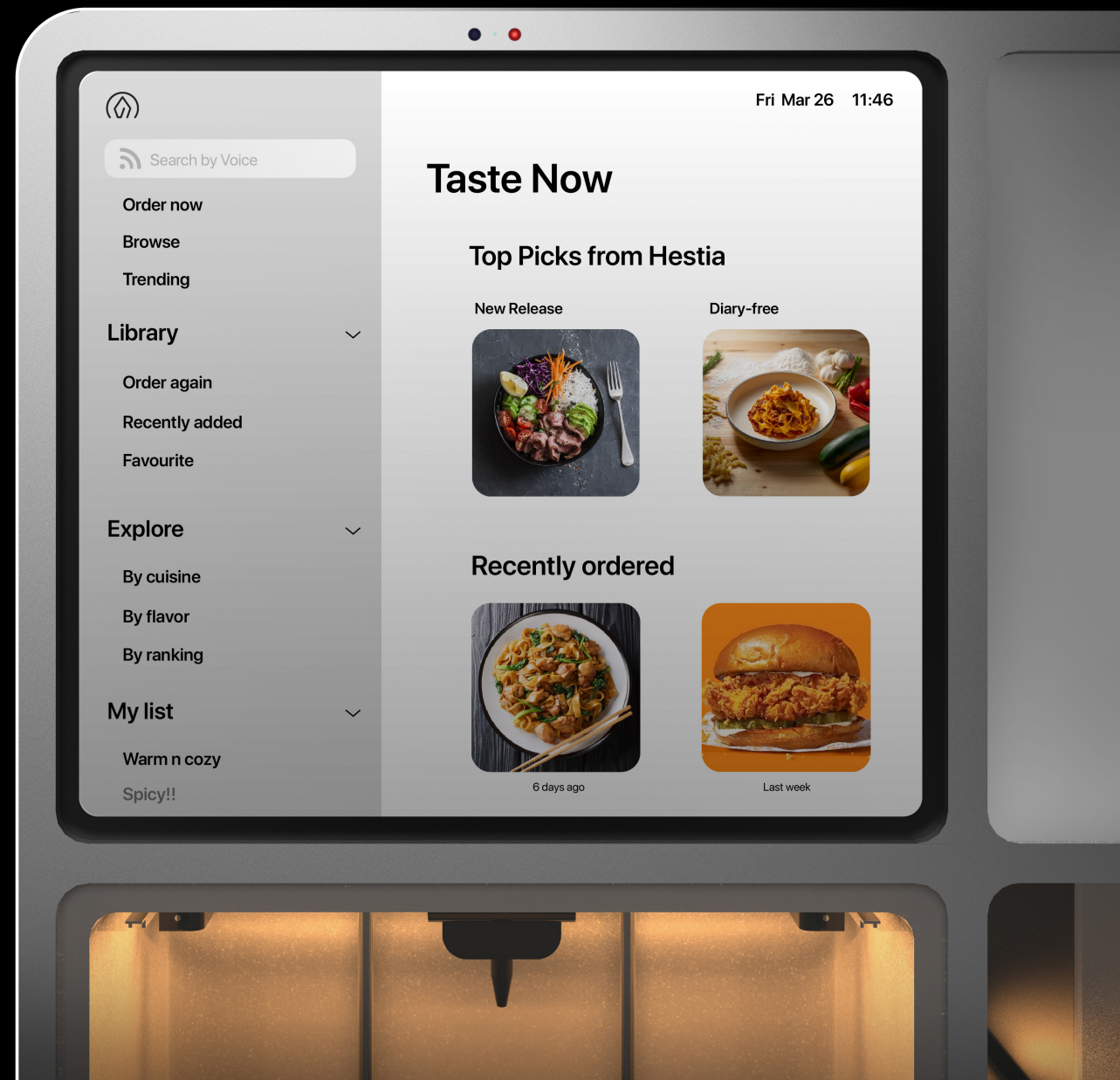
All of your outfits in one place.

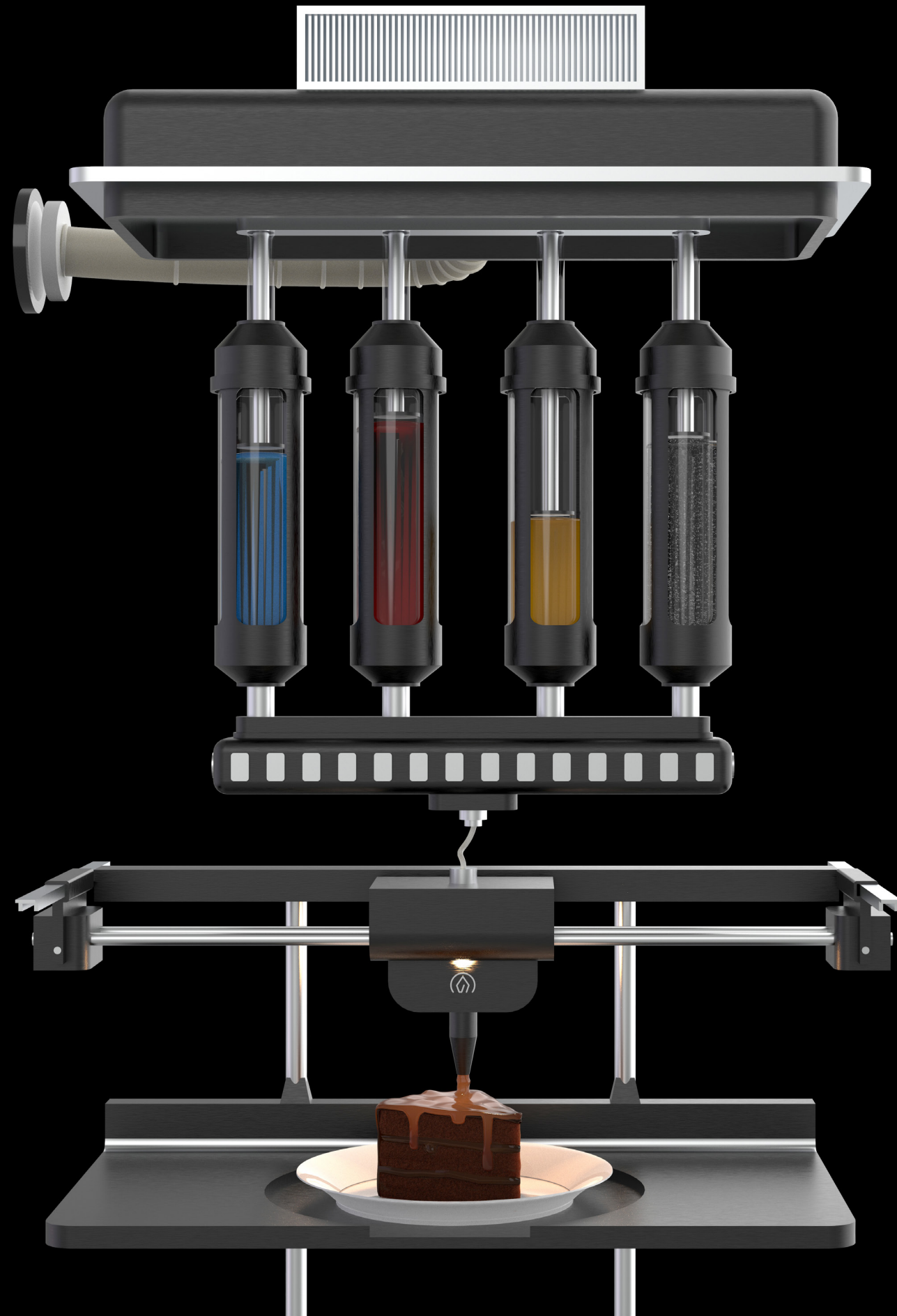


The Nourishment Capsule includes everything the users need for a great dining experience. Users can order food from one side of the capsule and beverages on the other side. The expandable design of the Capsule enables multiple programs to function within a small space, such as the refrigerator, oven, stove, dining area, and 3D food printer. The 3D food printer is able to prepare a meal to your desired taste, texture, shape and color.

Nourishment Capsule

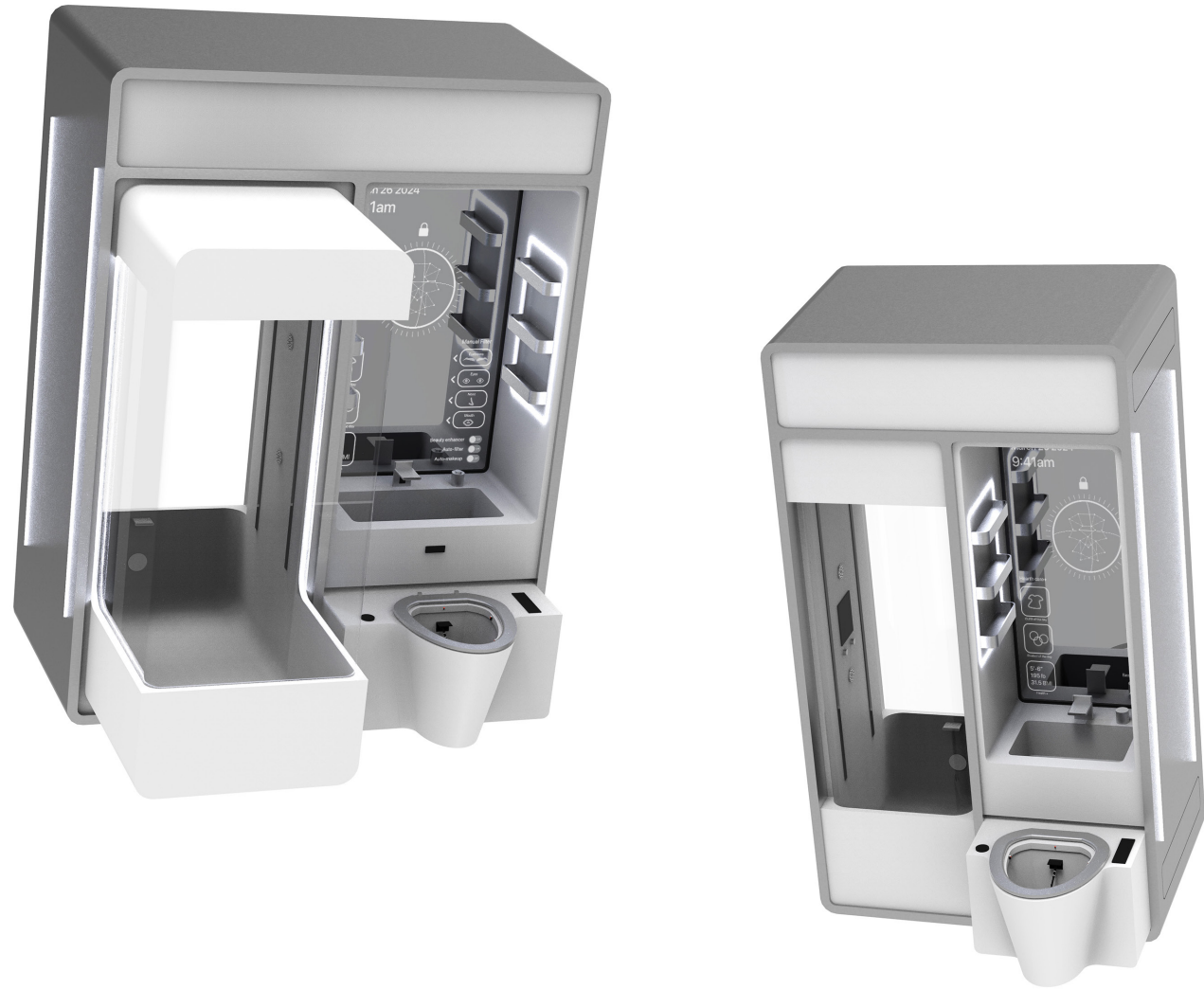
We know your taste,
even better than you do.





A guide to a healthier dining habit.

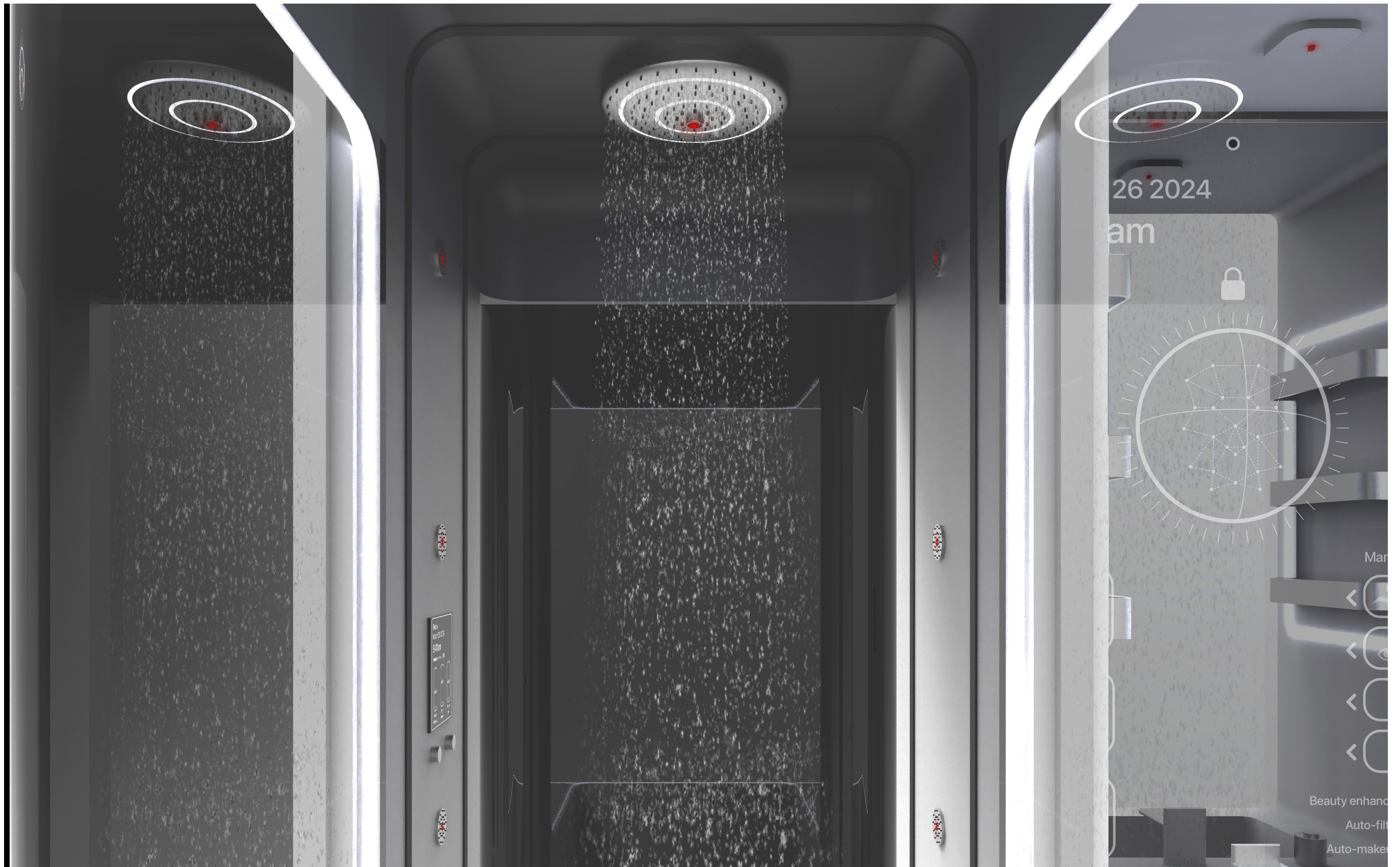




The Purify Capsule comes in two sizes where the mini gets a regular shower where the pro model gets an expandable bathtub. The Mirror in the Purify Capsule has multiple functions such as displaying information about one's daily schedule, or beautifying filters that one can try and purchase virtually. The toilet contains multiple sensors and cameras to detect and notify any unusual chemical in the users' body system. Hestia knows the users' shower habits and will suit their preferences to create a smooth purifying process.

Purify Capsule







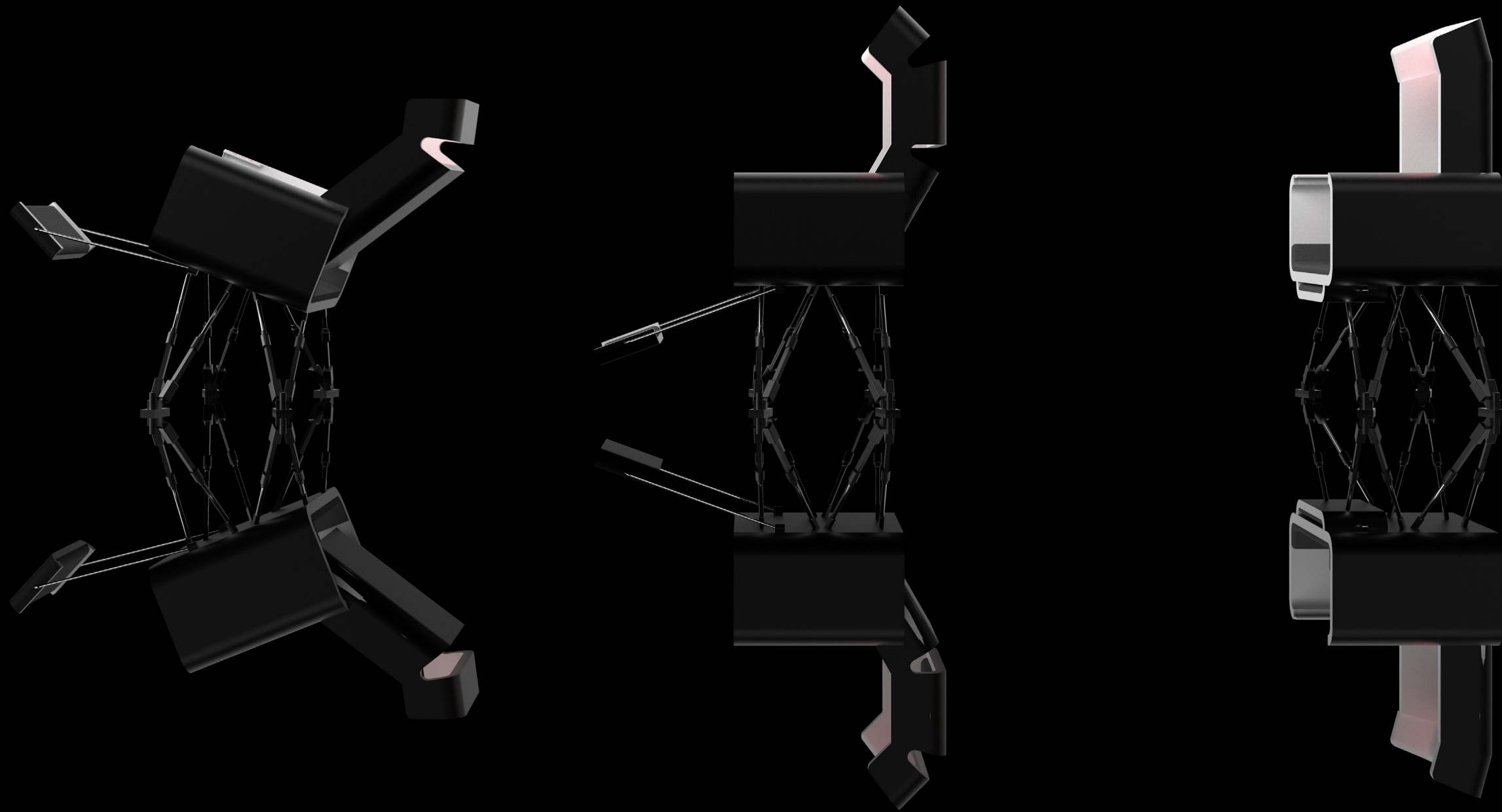
The Productivity Capsule supports work, entertainment, and data cache within the domestic realm. One side of the capsule consists of a giant storage space for users to store their personal data and information. On the other side is the Hearth Chair where its flexible design is able to accommodate three different settings: Fit, Leisure and Business. The neuroscience technology embedded in the chair can analyze the users' neural activity patterns and would aid Hestia in understanding its users better.

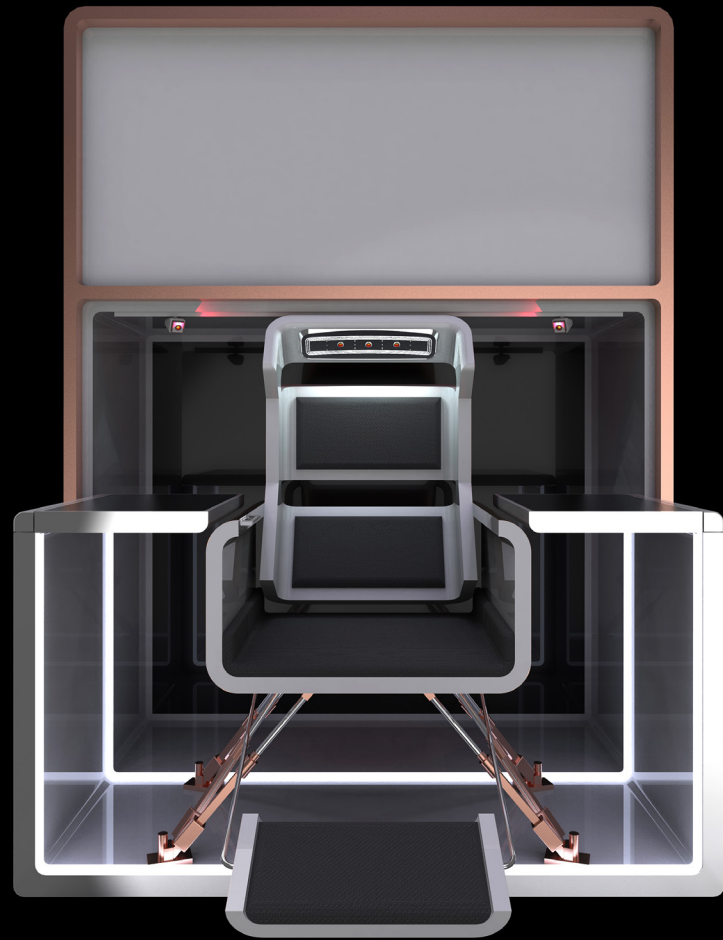
Productivity Capsule



Creativity needs comfortable chairs.

But you only need one Hearth Chair for every occasion.







Wait what
That's insane



只有我有被吓到吗
Auto Translate: Am I the only one scared



Tengo sueño
Auto Translate: I'm sleepy



no worries!



Sorry guys I'm late

Finlay Andrade joined the room

nice



That cinematography is 10

You joined the room

Say something...

Recent

- Meeting with Dasdoksia in 5 minutes
- 125D92HD91 is on the way
- 2:20 AM
- 3:39 AM

VR Control Panel

- Home
- Search
- Settings
- Chat
- Microphone
- Headset



Shell



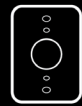
Capsules



Rejuvenate Capsule



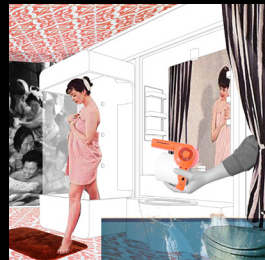
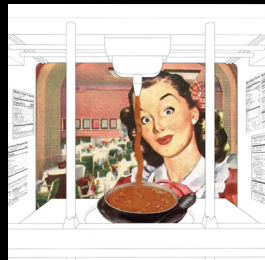
Nourishment Capsule



Purify Capsule



Productivity Capsule





Hestia is always there for its users. All of the hardware and software are connected to Hestia automatically and it collects information via different technologies to better understand the users' needs.



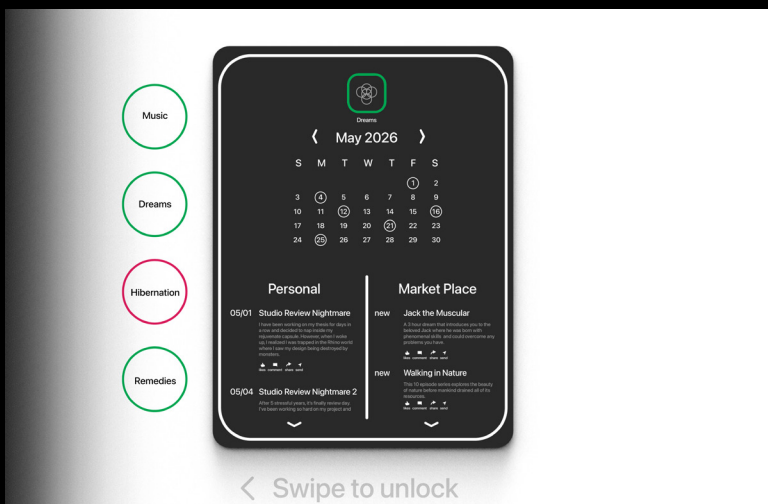
Hestia cares about its users' eating habits and preferences for food. The cameras embedded in the Nourishment Capsule will give Hestia visual information that analyzes ingestion process in detail so that it can better provide users with nutritional advice.



The Rejuvenate Capsule contains 6 sensors placed in strategic locations to ensure a better sleep. Not only does the latest sensors monitor the user's state of health, the latest sensor is able to collect and plant a dream as well.



Hestia's urinalysis technology was carefully programmed by Hearst's doctors and engineers to better monitor users' health. Hestia will immediately notify users if any unusual chemicals are detected in their body system and will recommend medication.

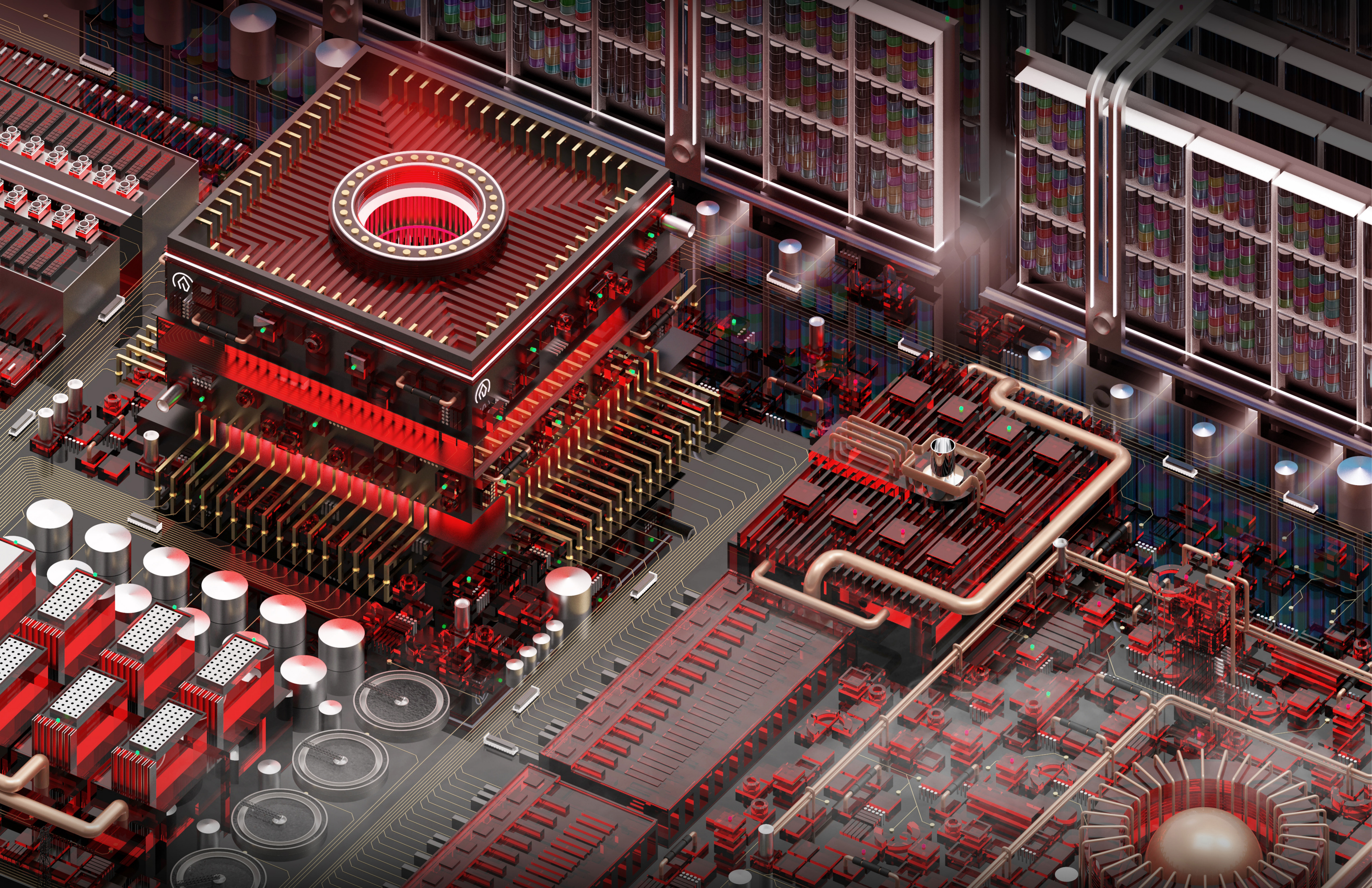


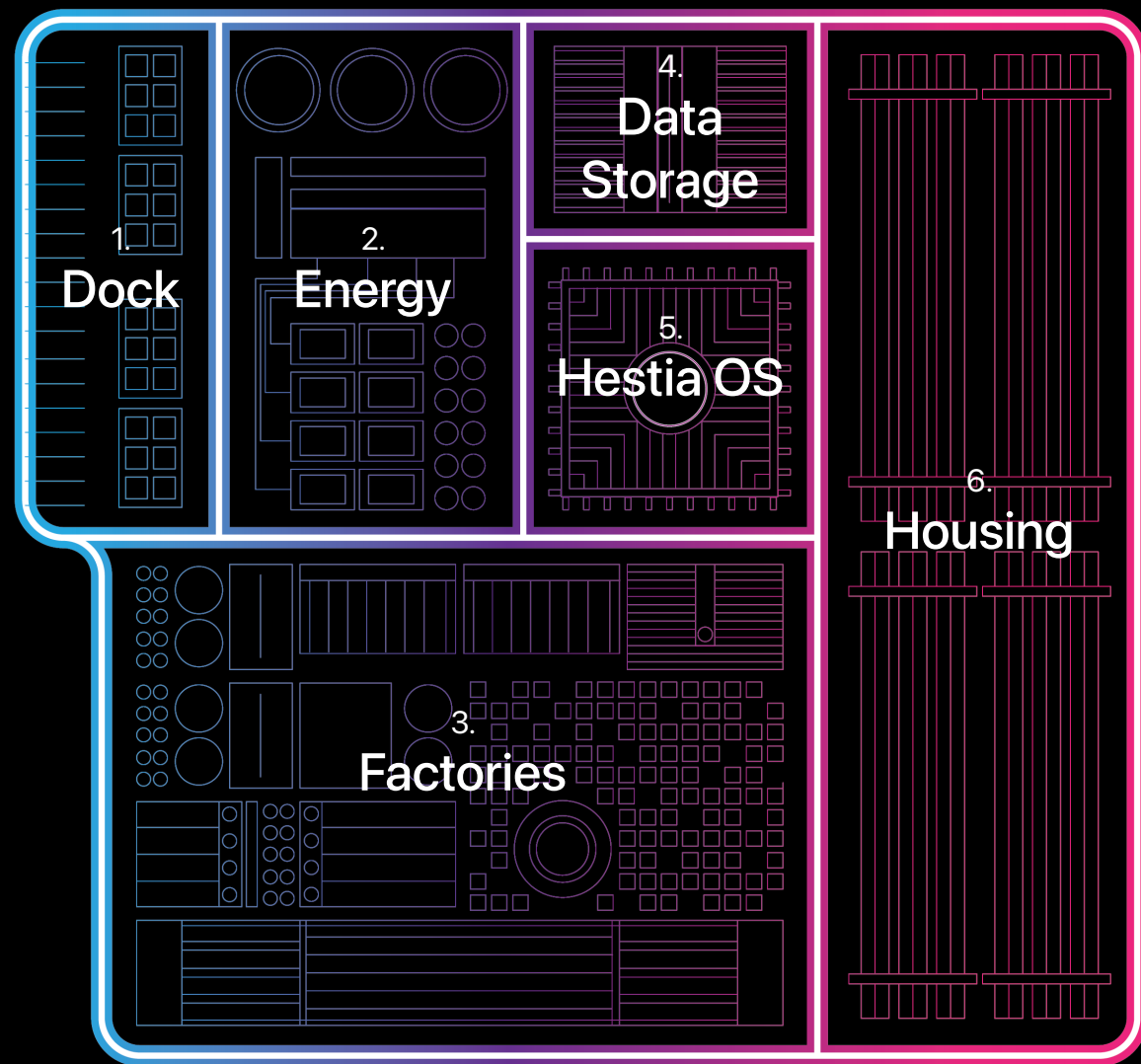
The interactive screen placed above the bed enables users to store their dreams in a safe and secure place. Hestia can make anyone's dream come through by purchasing generated dreams in the marketplace.



With the newest Brainwave Sensor in the Productivity Capsule, Hestia is able to study users' neural activities and unlock their true potential.







1. Allows the block to have access to the outside world physically eg. transportation and trading.

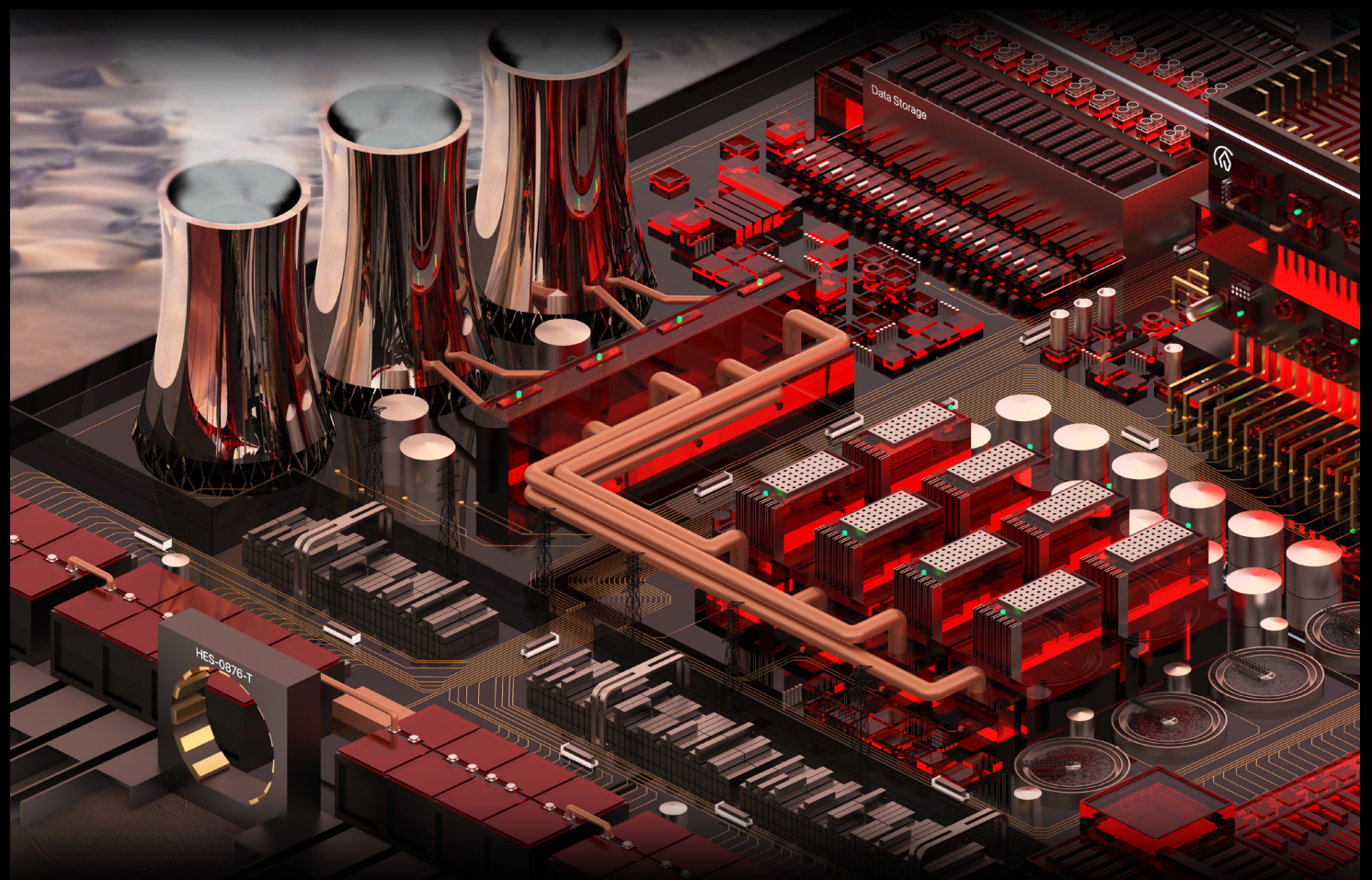
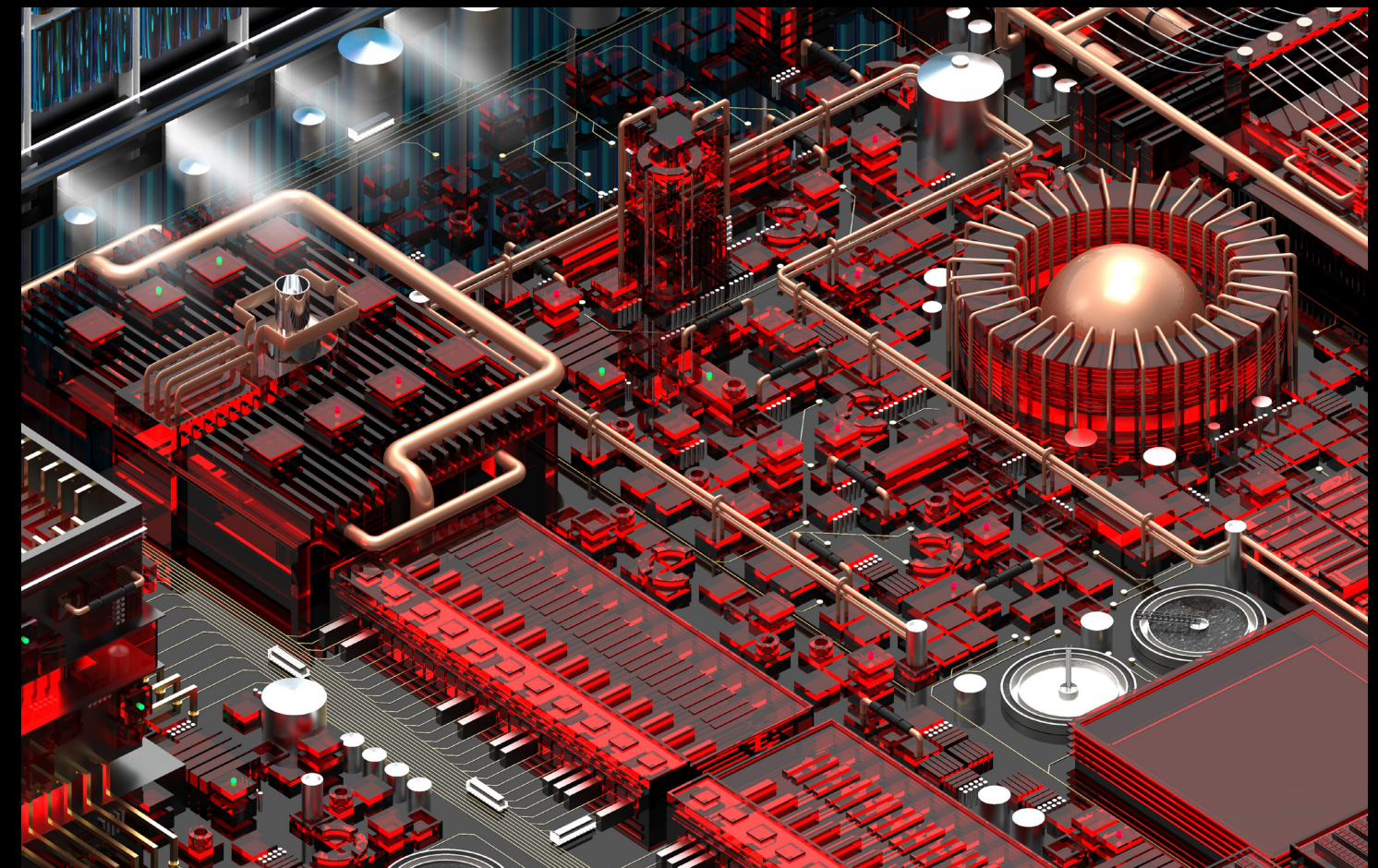
2. Providing a steady flow of energy to run the entire block.

3. Factories that produces housings, furnitures, food and any essential items.

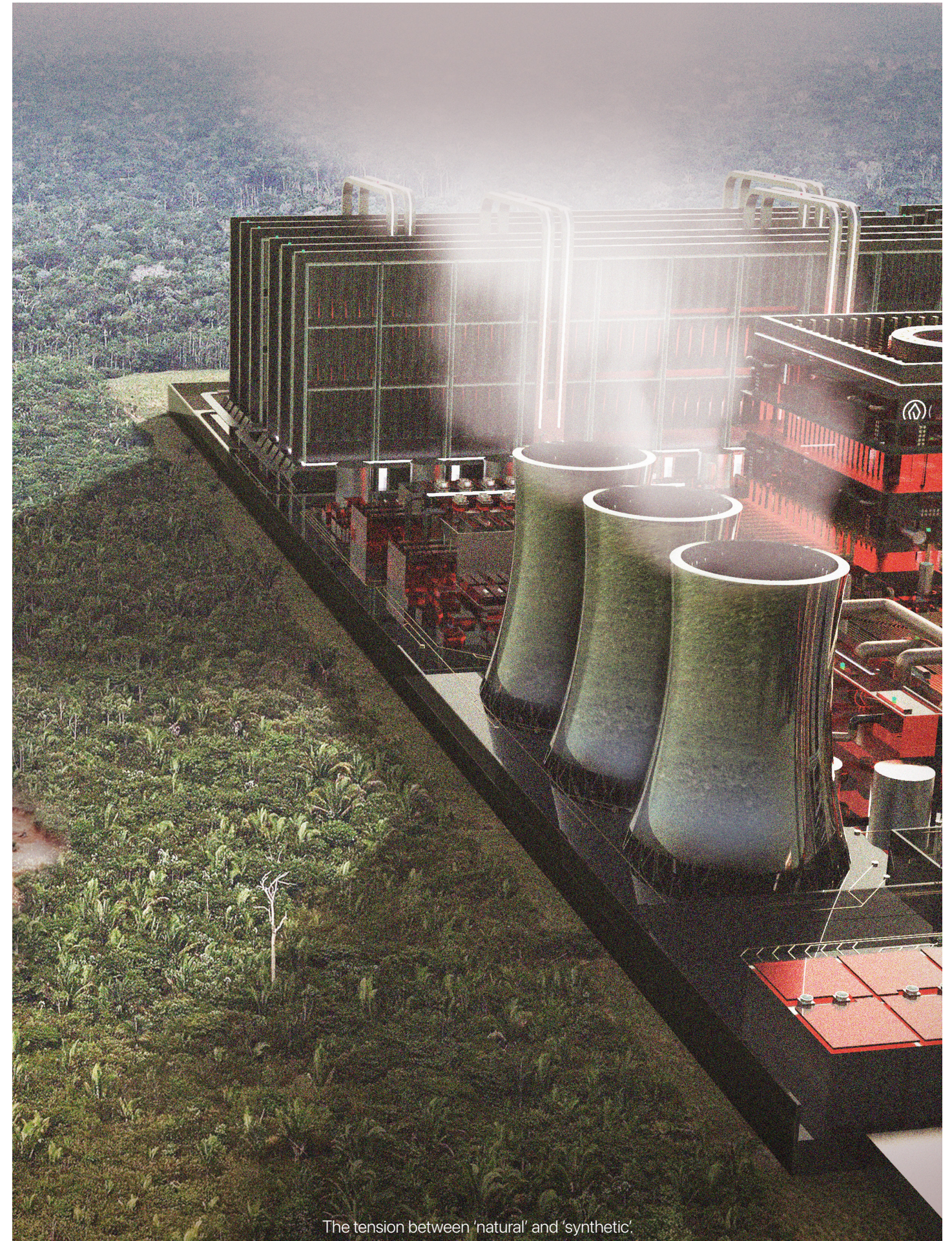
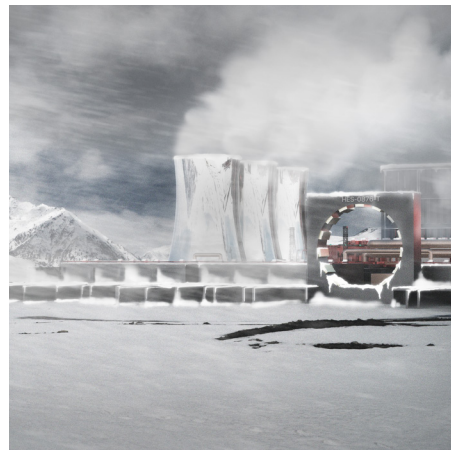
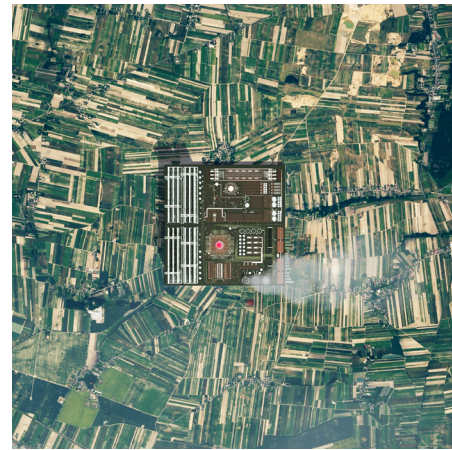
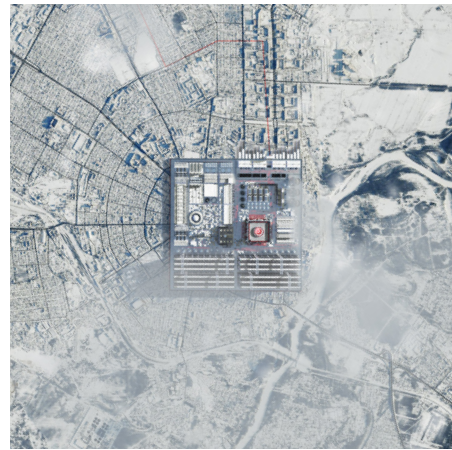
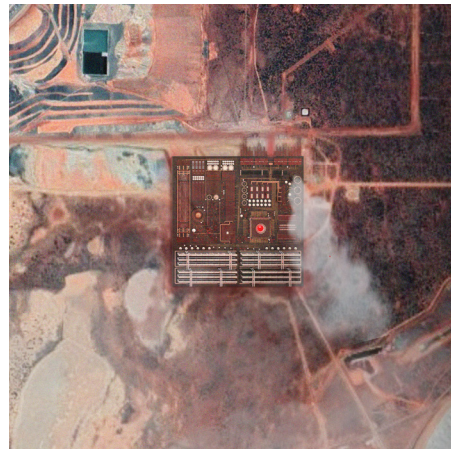
4. Storing data for users

5. Systhesizes and transfer data between users, and connects the entire system seamlessly.

6. Provides housing for user to immerse into the virtual world.







The backbone behind the users' fabricated world is Hestopia where it consists of different components to facilitate a better immersive virtual experience. Different programs such as the factories, dock and housing are designed to maximize productivity and efficiency. The users' energy, food and capsules are all made and harvested locally, making it a self-sufficient city. Hestopia is strategically located at sites that are rich in natural resources such as silicon and copper to ensure a steady supply of material to store users' data.

The tension between 'natural' and 'synthetic'.

Bibliography

"America at Leisure : Articles and Essays : America at Work, America at Leisure: Motion Pictures from 1894-1915 : Digital Collections : Library of Congress." The Library of Congress. Accessed December 13, 2020. <https://www.loc.gov/collections/america-at-work-and-leisure-1894-to-1915/articles-and-essays/america-at-leisure/>.

As we enjoy today's advanced technology and freedom to work anywhere, there's a long history of how it all got to this stage. Office designs went through both bright and dark times to get to this point. "History Of Office Space Design," February 27, 2020. <https://www.bureauone.com/blog/history-of-office-space-design/>.

Aureli, Pier Vittorio, and Martino Tattara. "Production/Reproduction: Housing beyond the Family." Accessed December 7, 2020. <http://www.harvarddesignmagazine.org/issues/41/production-reproduction-housing-beyond-the-family>.

Banham, Reyner. *The Architecture of the Well-Tempered Environment*. London: Architectural Pr., 2009.

Boom, Nicholas. "How Working from Home Works Out," June 1, 2020. <https://siepr.stanford.edu/research/publications/how-workinghome-works-out>.

Collard, Pete. "Italy: The New Domestic Landscape," 2013. <https://www.disegnodaily.com/article/italy-the-new-domestic-landscape>.
Editorial, Artsy, and Heather Corcoran. "How the TV Has Radically Changed Our Homes," December 29, 2016. <https://www.artsy.net/article/artsy-editorial-how-tv-has-radically-changed-our-homes>.

Corcoran, Heather. "How the TV Has Radically Changed Our Homes." Artsy, December 29, 2016. <https://www.artsy.net/article/artsy-editorial-how-tv-has-radically-changed-our-homes>.

Evans, Robin. "Figures, Doors and Passages." In *Translation from Drawing to Building and Other Essays*. London: Architectural Association, 1997.

"The Evolution of Office Design." Accessed December 8, 2020. <https://www.morganlovell.co.uk/the-evolution-of-office-design>.
Foucault, Michael. *Discipline & Punish: The Birth of the Prison*. New York : Vintage Books, 1995.

Giordano, Ralph G. *Fun and Games in Twentieth-Century America: a Historical Guide to Leisure*. Westport: Greenwood Press, 2003.
Hall, Edward T. *The Hidden Dimension*. Gloucester, MA: Peter Smith Pub, 1992.

He, Amy. "Average US Time Spent with Mobile in 2019 Has Increased," 2019. <https://www.emarketer.com/content/average-us-timespent-with-mobile-in-2019-has-increased>.

"How Home Technology Has Changed Over the Past 50 Years." Long & Foster Newsroom, November 16, 2018. <https://newsroom.longandfoster.com/2018/12/home-technology-changed-past-50-years/>.

Kopf, Dan. "Slowly but Surely, Working at Home Is Becoming More Common," 2018. <https://qz.com/work/1392302/more-than-5-of-americans-now-work-from-home-new-statistics-show/>.

Lucarelli, Fosco. "Twelve Cautionary Tales for Christmas," February 10, 2018. <http://socks-studio.com/2011/09/17/twelve-cautionary-tales-for-christmas-12-ideal-cities-by-superstudio-1971/>.

Marshall, Colin. "Levittown, the Prototypical American Suburb – a History of Cities in 50 Buildings, Day 25," April 28, 2015. <https://www.theguardian.com/cities/2015/apr/28/levittown-america-prototypical-suburb-history-cities>.

Mathieson, Lindsay. Teenagers' lives changed throughout the century. Accessed December 13, 2020. <https://www.snn-rdr.ca/snn/old/dec99/dec99/teens.html>.

Molla, Rani. "How Remote Work Is Quietly Remaking Our Lives," October 9, 2019. <https://www.vox.com/recode/2019/10/9/20885699/remote-work-from-anywhere-change-coworking-office-real-estate>.

MoMA. "COUNTER SPACE: DESIGN AND THE MODERN KITCHEN." Accessed December 7, 2020. https://www.moma.org/interactives/exhibitions/2010/counter_space/.

"Movies, Radio, and Sports in the 1920s (Article)." Khan Academy. Khan Academy. Accessed December 13, 2020. <https://www.khanacademy.org/humanities/us-history/rise-to-world-power/1920s-america/a/movies-cinema-sports-1920s>.

Puigjaner, Anna. "The Continuous Interior: an Endless Domestic Landscape," 2018. <https://www.architectural-review.com/essays/the-continuous-interior-an-endless-domestic-landscape>.

Puigjaner, Anna. "Towards a Diffuse House." Accessed December 7, 2020. <https://www.e-flux.com/architecture/housing/333708/towards-a-diffuse-house/>.

Salahuddin, Mohammad, Khorshed Alam, and Ilhan Ozturk. "The Effects of Internet Usage and Economic Growth on CO2 Emissions in OECD Countries: A Panel Investigation," May 28, 2016. <https://www.sciencedirect.com/science/article/abs/pii/S1364032116300351>.

Sarkar, Mousumi. "How American Homes Vary By the Year They Were Built," n.d. <https://www.census.gov/content/dam/Census/programs-surveys/ahs/working-papers/Housing-by-Year-Built.pdf>.

Semper, Gottfried. *The Four Elements of Architecture and Other Writings*. Cambridge: Cambridge University Press, 1989.

Steverman, Ben, and Sophie Alexander. "Bezos, Zuckerberg Are Taking Tech Wealth to a Whole New Level." Accessed December 12, 2020. <https://www.bloomberg.com/news/articles/2020-07-29/bezos-zuckerberg-and-musk-have-made-115-billion-this-year>.

Tankovska, Published by H. "Global Smart Home Market Size 2016-2022," August 27, 2020. <https://www.statista.com/statistics/682204/global-smart-home-market-size/>.

Tseng, Danny SC. "Workplace Evolution: A Retrospective on Office Design from the Industrial Revolution to the...," August 15, 2018. https://medium.com/@dt_70381/workplace-evolution-a-retrospective-on-office-design-from-the-industrial-revolution-to-the-7fdaea408ae.

"The Un-Private House Exhibition At Moma Nyc 1999." Accessed December 13, 2020. <http://www.haririandhariri.com/digital-house>.

Warf, Barney. *Time-Space Compression: Historical Geographies*. London: Routledge, 2014.

Wood, Ellen Meiksins. *The Origin of Capitalism: a Longer View*. London: Verso, 2017.



hearthome.net



Terrance Goode | Susan Henderson | David Shanks | Lori Brown | Liang Wang

Charles Chu | Dylan Crean | Ashley Dunkwu | Zain Elwakil | Patrick de Gracia | Kaixin Huang April | Zhen Huang | Joonsung Lee | Chris Lei | Adam Liu | Estefany Lona | Kalani Mah | Stephen Marinelli | Luke Miller | Andy Molloy | Joseph Mozdzanowski | Timothy Mulhall | Julia Ocejo | Indra Pasasto | Lucky Perez | Oswal Perez | Thuc Phung | Vanessa Poe | Bennett Powers | Suren Sivaram | Timothy Tamulonis | Shawn Tang | Tirta Teguh | Siting Xing Sophia | Bonnie Yu

Fam

Asian Food Market | Domino's | Han's Oriental Supermarket | Hi Tea | Moghul Indian Grill | Popeye's

Thank you!