

Syracuse University

**SURFACE**

---

The Courier

Libraries

---

Spring 1986

## Preface: A Special Stephen Crane Issue

David H. Stam  
*Syracuse University*

Follow this and additional works at: <https://surface.syr.edu/libassoc>



Part of the [Arts and Humanities Commons](#)

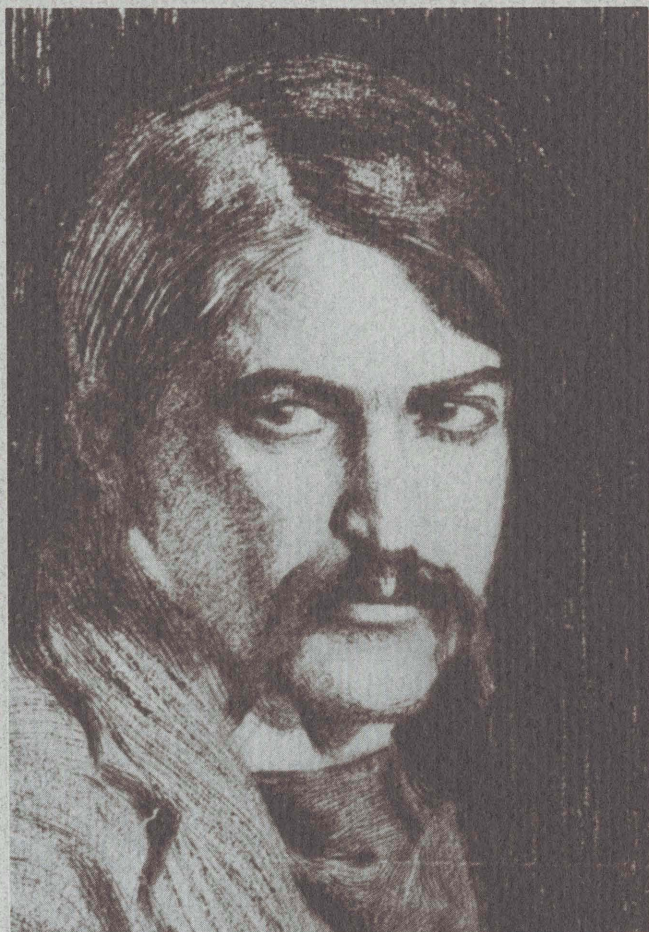
---

### Recommended Citation

Stam, David H., "Preface: A Special Stephen Crane Issue" (1986). *The Courier*. 369.  
<https://surface.syr.edu/libassoc/369>

This Article is brought to you for free and open access by the Libraries at SURFACE. It has been accepted for inclusion in The Courier by an authorized administrator of SURFACE. For more information, please contact [surface@syr.edu](mailto:surface@syr.edu).

SYRACUSE UNIVERSITY  
LIBRARY ASSOCIATES  
C O U R I E R



VOLUME XXI, NUMBER 1, SPRING 1986

# SYRACUSE UNIVERSITY LIBRARY ASSOCIATES COURIER

VOLUME XXI

NUMBER ONE

SPRING 1986

---

- Preface: A Special Stephen Crane Issue  
by David H. Stam, University Librarian,  
Syracuse University 3
- Searching for Stephen Crane: The Schoberlin Collection  
by James B. Colvert, Professor of English,  
University of Georgia 5
- New Stephen Crane Letters in the Schoberlin Collection  
by Paul Sorrentino, Associate Professor of English,  
Virginia Polytechnic Institute and State University, and  
Stanley Wertheim, Professor of English,  
The William Paterson College of New Jersey 35
- The "Lost" Newspaper Writings of Stephen Crane  
by Thomas A. Gullason, Professor of English,  
University of Rhode Island 57
- Schoberlin's Annotated Copy of *War Is Kind*  
by Donald P. Vanouse, Associate Professor of English,  
The State University of New York at Oswego 89
- Newly Discovered Writings of Mary Helen Peck Crane  
and Agnes Elizabeth Crane  
by Associate Professor Paul Sorrentino 103
- The Stephen Crane Collection at Syracuse University  
by Edward Lyon, George Arents Research Library 135
- News of the Syracuse University Libraries and  
the Library Associates 147

## PREFACE: A SPECIAL STEPHEN CRANE ISSUE

One of the great pleasures of coming to a new library, as I did to Syracuse last March, is the joy of discovering particularly strong but unexpected collections. The Leopold von Ranke holdings, the Margaret Bourke-White collection, and the Belfer Audio Archives are just a few of the great strengths of the Syracuse University Libraries and its special collections.

One of the more natural aggregations of materials here is our strong and growing collection of letters, manuscripts, and documents by and relating to Stephen Crane, an undergraduate at the University during the Spring of 1891. Crane was better known at Syracuse for his contributions to the University baseball team and his penchant for cutting chapel than for his incipient literary talent. Nonetheless, we have not failed to exploit the connection.

In 1984 Syracuse acquired the Melvin H. Schoberlin collection of Crane letters and manuscripts, and it is that acquisition, joining many other distinguished Crane collections already here, that this issue of the *Courier* celebrates. We hope that the contents will be enjoyable to the lay reader, informative for the specialist, and above all will attract other scholars to use these unique resources.

David H. Stam  
University Librarian