

# BEADS: Journal of the Society of Bead Researchers

---

Volume 26 (2014)

Article 10

---

1-1-2014

## Captions and Color Plates (v. 26, 2014)

Follow this and additional works at: <https://surface.syr.edu/beads>



Part of the [Archaeological Anthropology Commons](#), [History of Art, Architecture, and Archaeology Commons](#), [Science and Technology Studies Commons](#), and the [Social and Cultural Anthropology Commons](#)

---

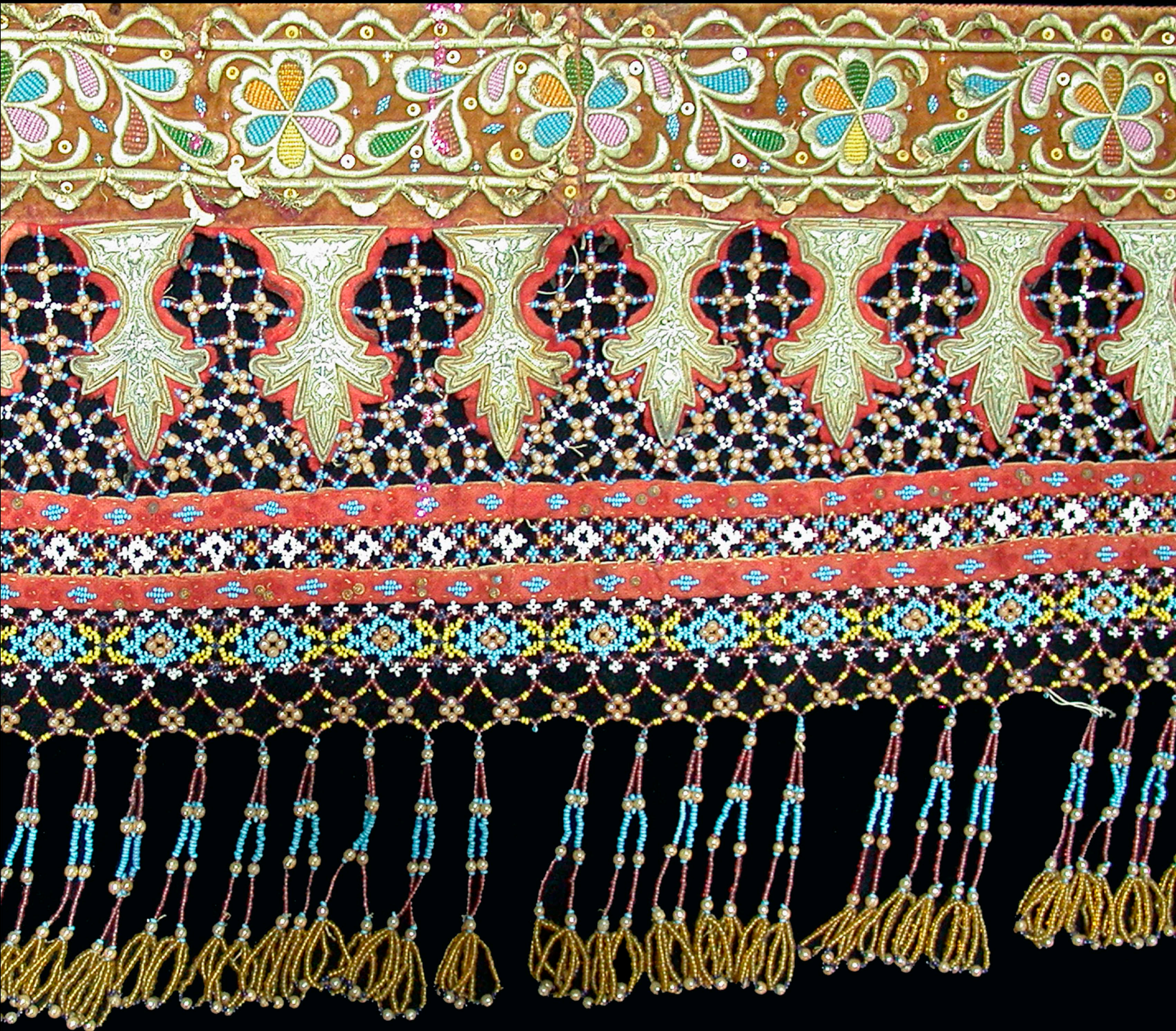
### Repository Citation

(2014). "Captions and Color Plates (v. 26, 2014)." *BEADS: Journal of the Society of Bead Researchers* 26. Available at: <https://surface.syr.edu/beads/vol26/iss1/10>

This Image is brought to you for free and open access by SURFACE at Syracuse University. It has been accepted for inclusion in BEADS: Journal of the Society of Bead Researchers by an authorized editor of SURFACE at Syracuse University. For more information, please contact [surface@syr.edu](mailto:surface@syr.edu).

# BEADS

Journal of the Society of  
Bead Researchers



2014

Vol. 26

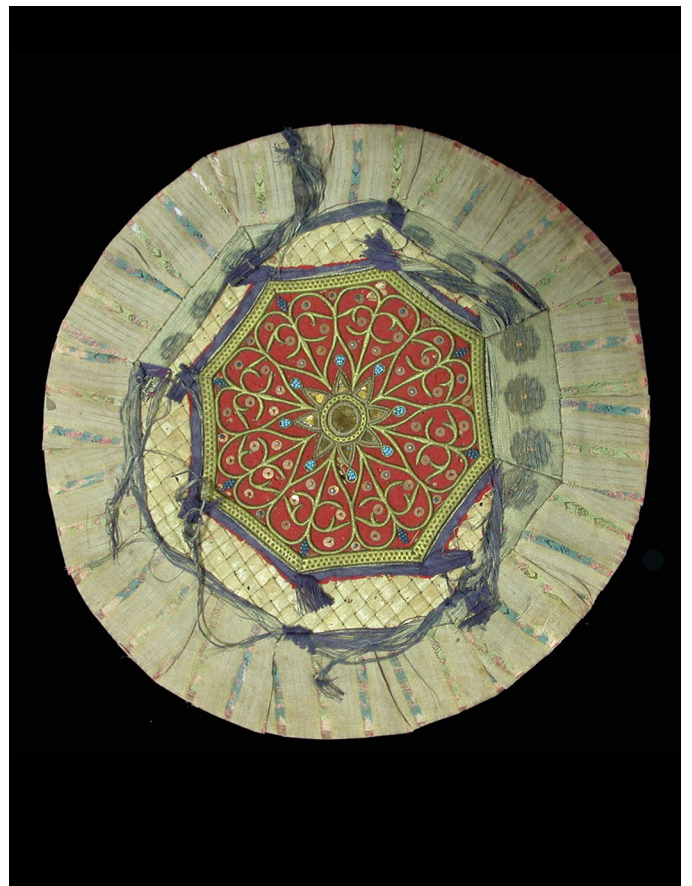


**Plate IA.** Malay beadwork: Ceremonial handkerchief (*sapu tangan*), Perak, early 20th century (Jabatan Muzium Malaysia).



**Plate IB.** Malay beadwork: Pillow face (*muka bantal*), Perak, early 20th century (Jabatan Muzium Malaysia).

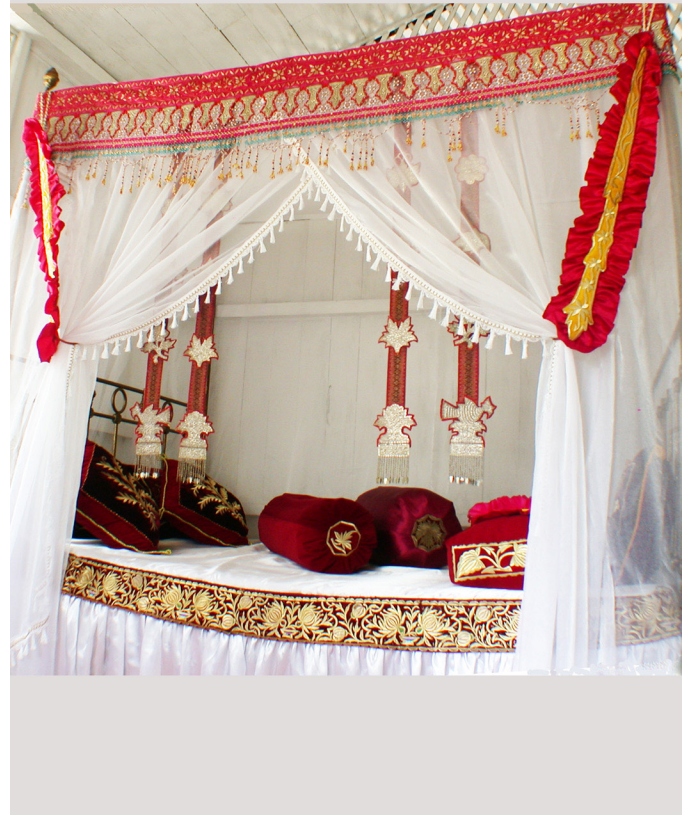
**Plate IC.** Malay beadwork: Detail of the pillow face in Plate IB.



**Plate ID.** Malay beadwork: Pillow face, Perak, early 20th century (Jabatan Muzium Malaysia).



**Plate IIA.** *Malay beadwork:* Detail of the Perak pillow face in Plate ID ; early 20th century (Jabatan Muzium Malaysia).



**Plate IIB.** *Malay beadwork:* Bridal couch, Perak, late 20th century; embroideries, early 20th century (collection of Enche Nadimah, Chemor, Perak).

**Plate IIC.** *Malay beadwork:* Central panel for a ceremonial mat (*tikar*), Perak, late 19th century (courtesy of Perak State Museum).



**Plate IID.** *Malay beadwork:* Detail of the Perak mat panel in Plate IIC (courtesy of Perak State Museum).



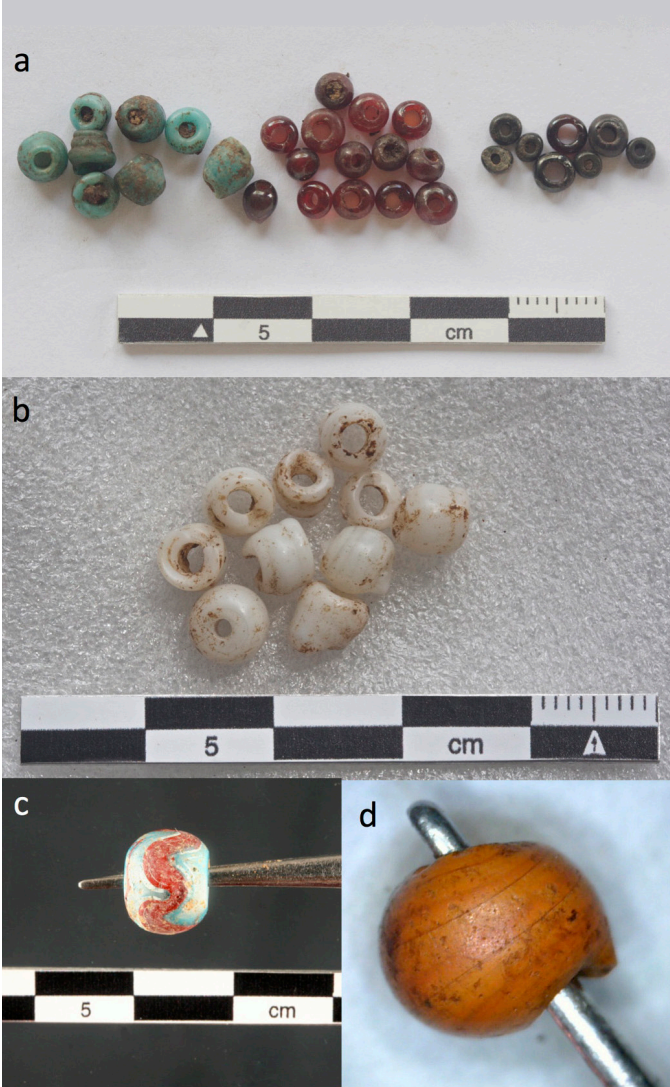


**Plate IIIA.** Cambodia: Jar burials on a rock ledge at the Phnom Khnang Peung site.



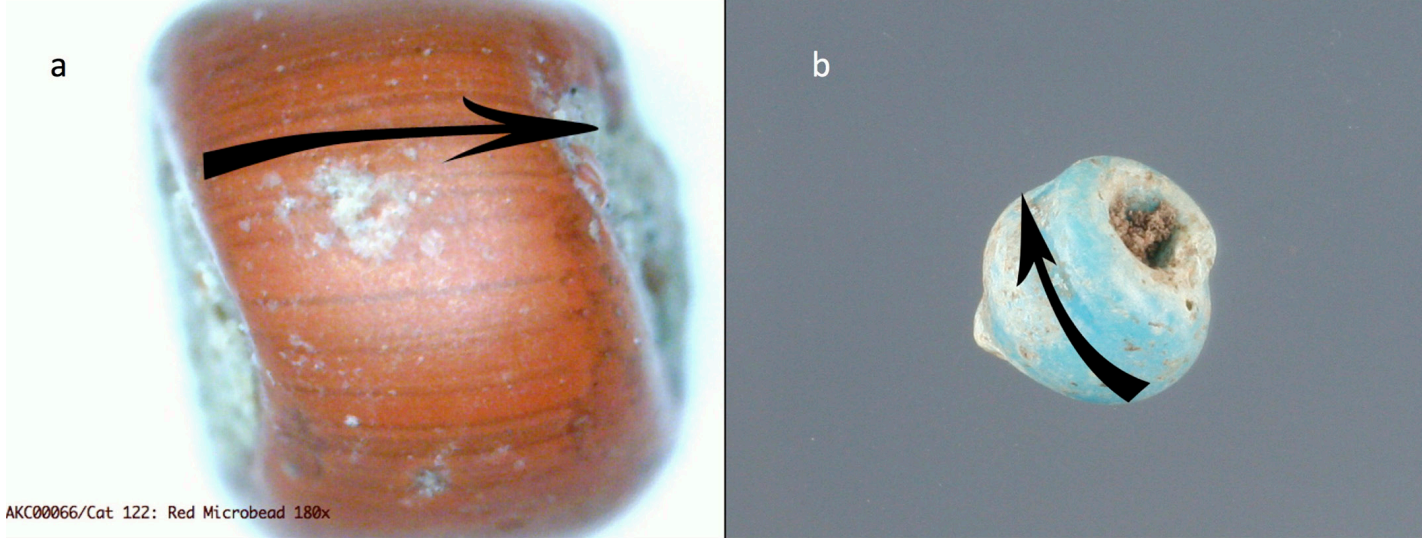
**Plate IIIB.** Cambodia: The burial jars at the Phnom Khnang Peung site.

**Plate IIIC.** Cambodia: Coiled glass beads: a) op. light blue, purple, and purplish black; b) white; c) polychrome; and d) reddish-orange.



**Plate IIID.** Cambodia: Examples of m-Na-Al type 2 drawn glass beads from the Cardamom Mountain jar burial sites.



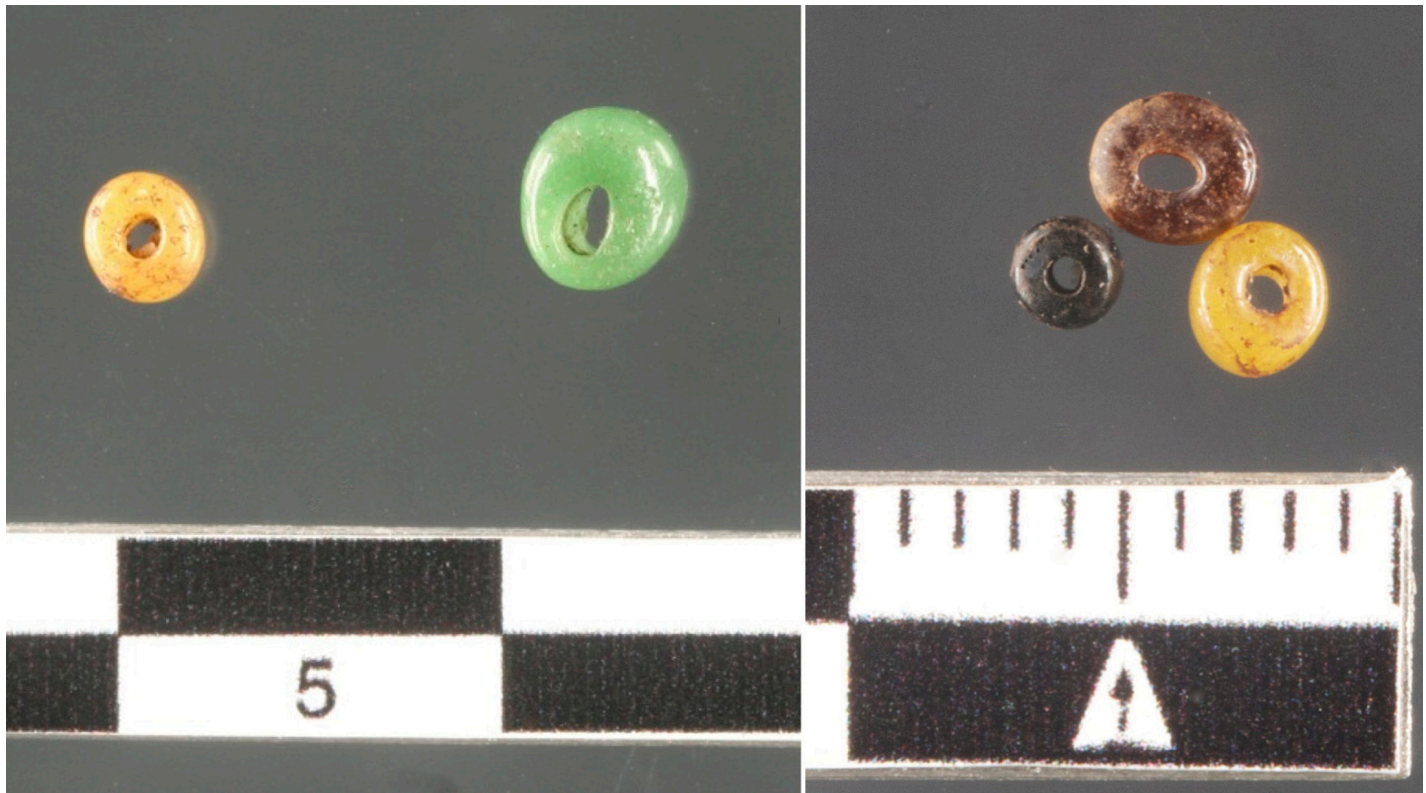


**Plate IVA.** *Cambodia:* Cardamom Mountain jar burial site beads: a) striations on a drawn glass bead and b) striations on a coiled (wound) glass bead.

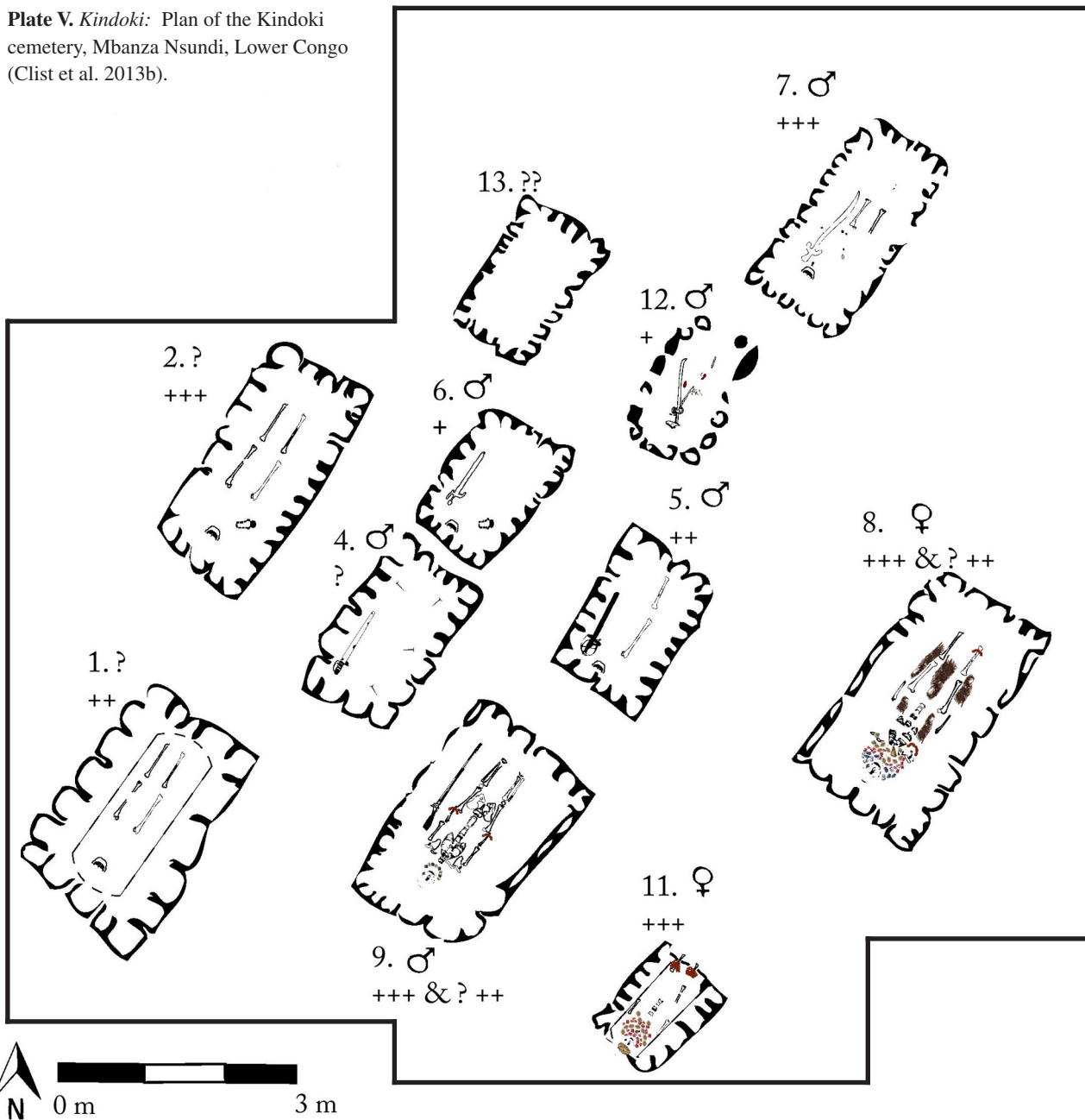


**Plate IVB.** *Cambodia:* Yellow bead (center) with unusual striations suggesting sagging or twisting during the manufacturing process: a) digital microscope image (50x) of a yellow bead from the Okei site showing parallel striations; b) digital microscope image (60x) of one of the yellow beads from Jar 36 at the KPP site with unusual striations; c) the unusual yellow beads from Jar 36.

**Plate IVC.** *Cambodia:* Examples of the newly identified high-alumina glass type from the Cardamom Mountain jar burial sites.



**Plate V. Kindoki:** Plan of the Kindoki cemetery, Mbanza Nsundi, Lower Congo (Clist et al. 2013b).



Legend:

Skeleton		Sex: Man ♂	Beads: Cobalt blue		Black	
Sword		Woman ♀	Red		Blown	
Musket			White with wreath		Copper	
Medallion		Age: + = 6-7 years	Round, dark blue		White wound	
Crucifix		++ = 20-40 years	Bells		Blue wound	
Iron chain		+++ = 40-60 years	Blue with stripes		Shell or coral	
Metal nail						
Metal fragment						
			Shells: <i>Tympanotonus fuscatus</i>			
			<i>Pusula depauperata</i>			
			Textile			
			Headdress with buttons			
			Coffin remains			



**Plate VIA.** *Kindoki*: The female burial in tomb 8 was wrapped in textiles and accompanied by rich grave goods including shell and glass beads and copper hawk bells (photo: Bernard Clist).

**Plate VIC.** *Kindoki*: The wound, blue, ridged-tube beads of tomb 8.



**Plate VIB.** *Kindoki*: The shell, copper, and miscellaneous glass beads of tomb 8 (all bead photos: Jean-Luc Elias, KIK/IRPA).

**Plate VID.** *Kindoki*: The wound, cylindrical, red-on-white beads of tomb 8. Note the many beads fused end to end during the manufacturing process.







**Plate VIIA.** *Kindoki*: Examples of the silvered blown beads and copper hawk bells found in tomb 8.

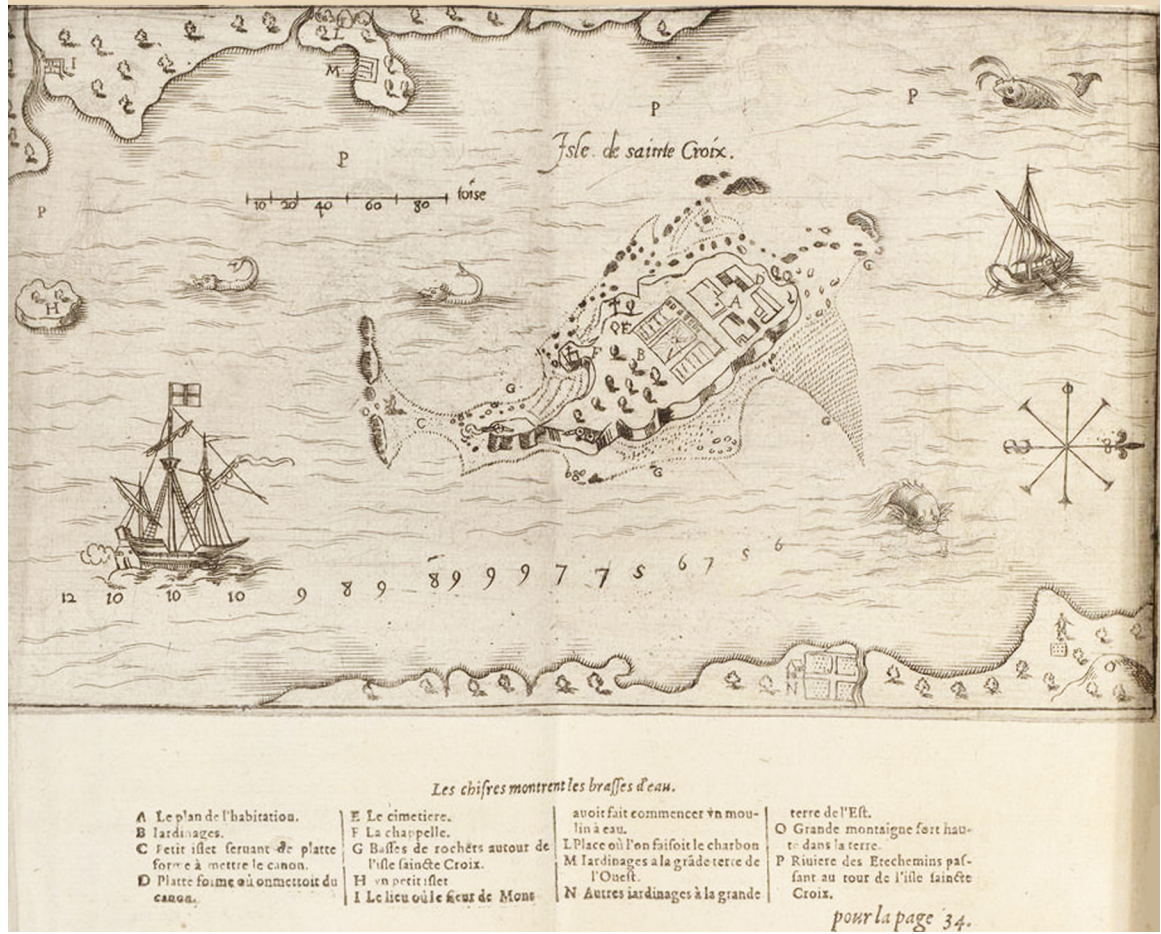
**Plate VIIC.** *Kindoki*: The wound glass beads from tomb 9. Most were decorated with inlaid wreaths.



**Plate VIIB.** *Kindoki*: The burial in tomb 11 with a view of the skull showing the red-on-white beads at the neck and the buttons on the headdress (photos: Bernard-Olivier Clist and Igor Matonda).

**Plate VIID.** *Kindoki*: The glass and shell or coral beads of tomb 12.





**Plate VIII A.** *Saint Croix:* Champlain's 1613 plan of the Saint Croix Island habitation from *Les Voyages* (reproduced with permission, Maine Historic Preservation Commission).

**Plate VIII B.** *Saint Croix:* Bead varieties from Saint Croix Island: a) IIIb\* (#152), b) Ia5 (#153), c) IIa40 (#159), d) IIa15 (#191), e) IVa16 (?) (#692) (reproduced with permission, Maine Historic Preservation Commission).



a



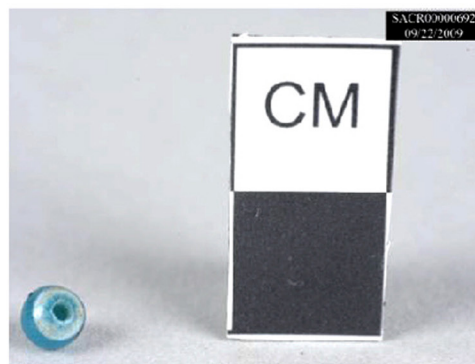
b



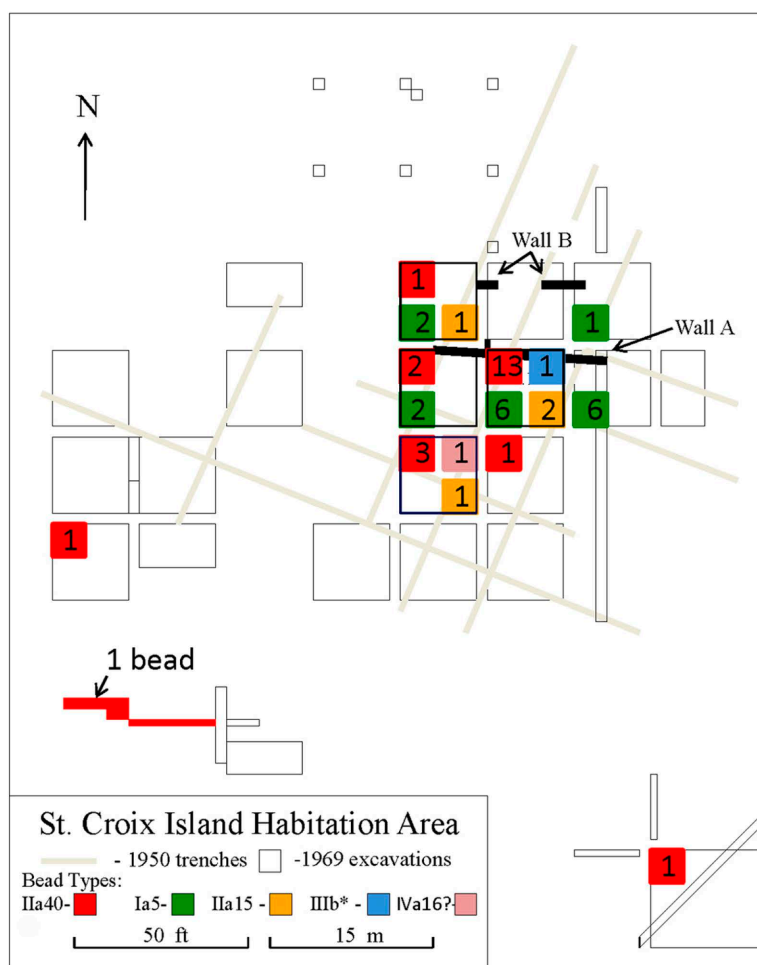
c



d



e



**Plate IXA.** *Saint Croix*: Distribution of beads at the Saint Croix Island habitation (reproduced with permission, Maine Historic Preservation Commission).

**Plate IXB.** *Saint Croix*: A sample of the glass wasters from the Carel-Soop glasshouse (1601-1624) in Amsterdam (photo: James W. Bradley).





**Cover:** Malay beadwork: Valance (*lemudi*), Perak, early 20th century (Jabatan Muzium Malaysia).