

Syracuse University

## SURFACE at Syracuse University

---

International Programs

International Programs

---

9-1-2023

### Air Pollution in Quito-Ecuador

Daniela Guevara Proaño

Follow this and additional works at: <https://surface.syr.edu/eli>



Part of the [Education Commons](#)

The views expressed in these works are entirely those of their authors and do not represent the views of the Fulbright Program, the U.S. Department of State, or any of its partner organizations.

---

#### Recommended Citation

Proaño, Daniela Guevara, "Air Pollution in Quito-Ecuador" (2023). *International Programs*. 237.  
<https://surface.syr.edu/eli/237>

This Poster is brought to you for free and open access by the International Programs at SURFACE at Syracuse University. It has been accepted for inclusion in International Programs by an authorized administrator of SURFACE at Syracuse University. For more information, please contact [surface@syr.edu](mailto:surface@syr.edu).

### 1. INTRODUCTION

In Ecuador, the city of Quito is very vulnerable to air pollution due to its **geographic location, development model, and poor fuel quality** [3]. This increases the risk of pulmonary and cardiovascular diseases in children, the elderly, and pregnant women [5].

### 2. STUDY AREA

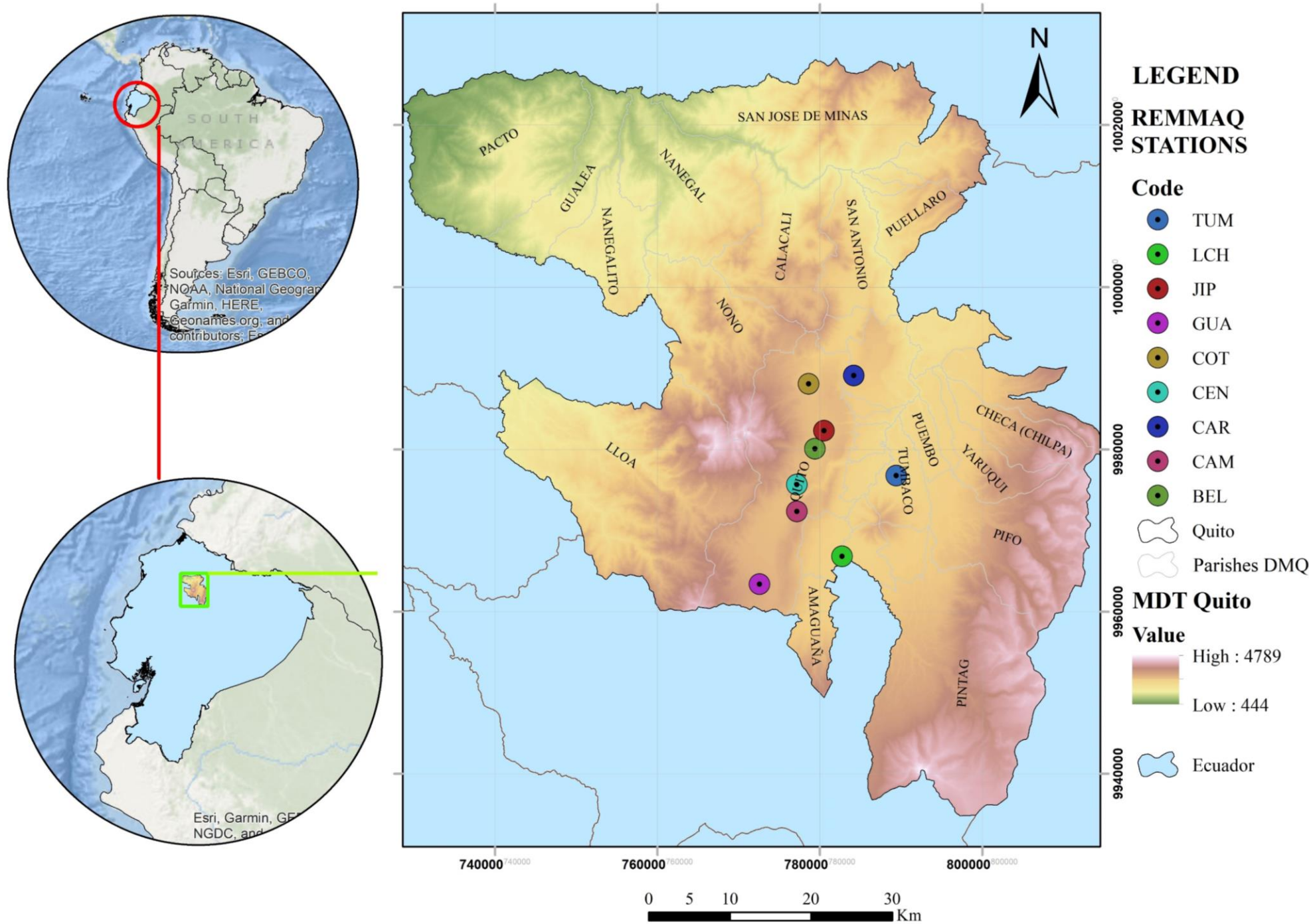


Figure 1. Metropolitan District of Quito (DMQ) [1]

In Quito, the air quality monitoring system is managed by **REMAAQ**, which has **9 remote stations** that perform hourly, continuous, and automatic analysis of atmospheric pollutants and meteorological parameters.

### 3. METHODS

Quality control [3]:

- Pollution temporal classification.
- Outliers' detection and normality transformation.
- Missing data imputation and new series definition.

Comparative analysis with WHO [4] and NCAA [2].

Defined the Quito Air Quality Index (IQCA) [2].

Figure 2. Quito air pollution [6]



**WORLD HEALTH ORGANIZATION**  
 Air pollution is the largest environmental risk for public health and climate change.

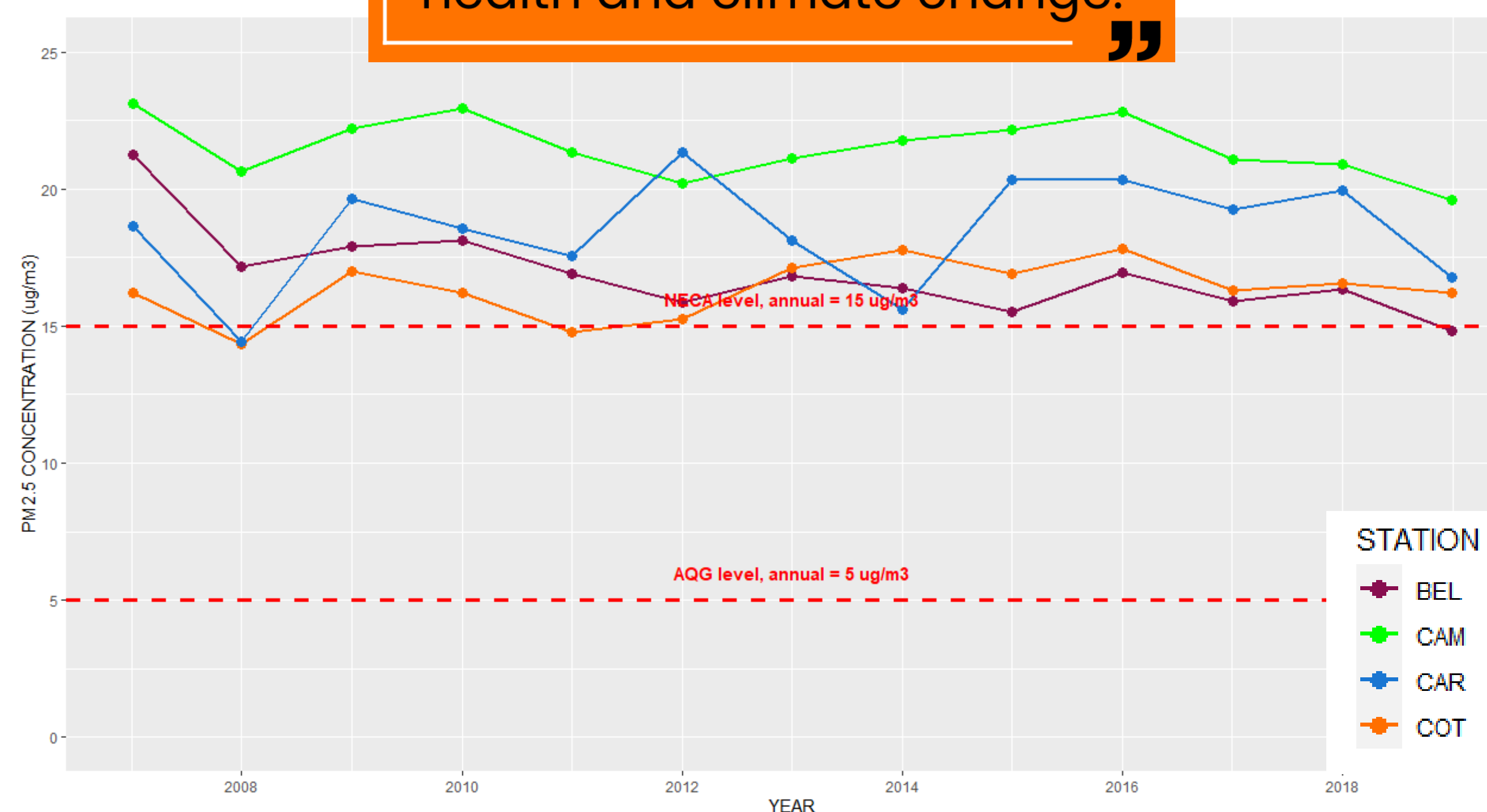


Figure 3. Comparison between annual PM2.5 values and WHO and NCAA standards [1]

### 4. RESULTS

The variables **CO, NO2, SO2, O3, and PM2.5** were analyzed for the stations Belisario (BEL), Carapungo (CAR), Cotocollao (COT), and El Camal (CAM) for 2007-2019.

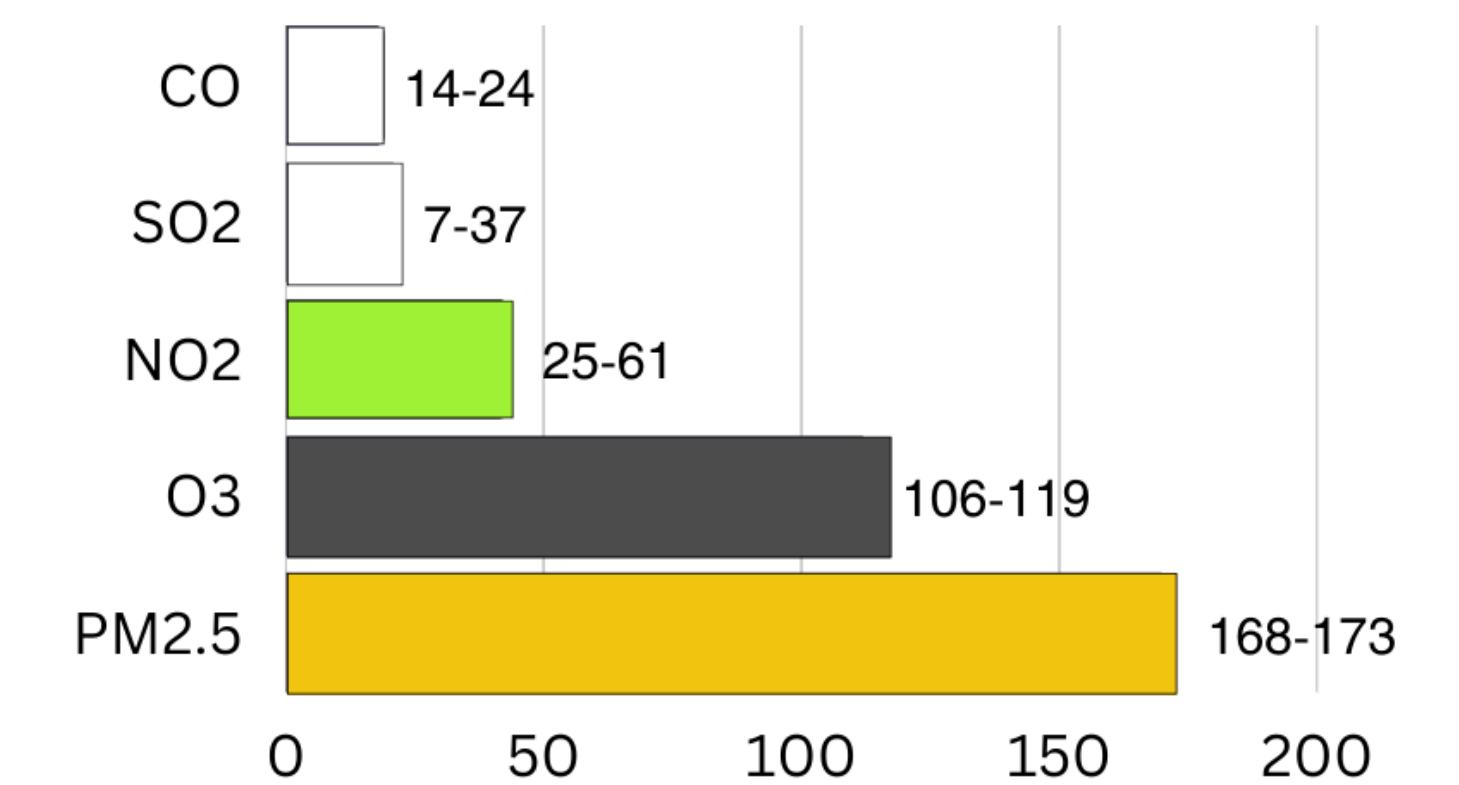


Figure 4. Air Quality Index (IQCA) [1]

**PM2.5 is the main air quality pollutant** due to vehicle traffic, the traditional puppets, and the use of gunpowder in new year. Annual averages exceed the NCAA by 85% and the WHO by 100%. **Pollution peaks are in El Camal**, where there is a high density of population, socioeconomic activities, educational institutions, and recreational areas [1]

### 5. CONCLUSIONS

The health of many people is at high risk in the Camal sector due to high levels of PM2.5 air pollution. For this reason, authorities should demand greater control of compliance with national regulations and create a permanent atmospheric monitoring network.

### 6. ACKNOWLEDGEMENTS

This research is part of Daniela Guevara's undergraduate thesis at the Escuela Politécnica Nacional (<https://rb.gy/rmln3>). The author thanks the ELI and Fulbright Commission for their support during the Pre-Academic Program at Syracuse U.

### 7. REFERENCES



### 8. CONTACT

