

Syracuse University

SURFACE

Full list of publications from School of
Architecture

School of Architecture

Spring 2010

Architecture News: The Newsletter of the Syracuse School of Architecture, N.8 Spring 2010

Mark Robbins

Follow this and additional works at: <https://surface.syr.edu/arc>



Part of the [Architecture Commons](#)

Recommended Citation

Robbins, Mark, "Architecture News: The Newsletter of the Syracuse School of Architecture, N.8 Spring 2010" (2010). *Full list of publications from School of Architecture*. 202.

<https://surface.syr.edu/arc/202>

This Newsletter is brought to you for free and open access by the School of Architecture at SURFACE. It has been accepted for inclusion in Full list of publications from School of Architecture by an authorized administrator of SURFACE. For more information, please contact surface@syr.edu.

ARCHITECTURE NEWS

N.8 Spring 2010

The newsletter of the Syracuse University School of Architecture

[School News](#)

[Alumni News](#)

[Faculty/Staff News](#)

[Student News](#)

[Development News](#)

2004-2005

Message from the Dean

Even as the past year brought tentative signs of economic recovery and hopes that disaster has been averted, other massive disruptions remind us to expect the unexpected. Clouds of silica ash from an Icelandic volcano halted world air travel and drilling for oil ruptured the ocean floor resulting in devastation of an unknown scale. The dynamic interrelationship between complex human and natural systems challenges our assumptions about constancy. Perfect storms with catastrophic and unintended consequences seem to be the order of things. Even in the worlds of architectural practice and education, this new normal resonates.

The necessity for our students to operate effectively in an increasingly complex world has guided decisions about curricular development at the School. Architects are uniquely suited to insert themselves in multiple arenas, crossing art and science, and the University provides the field in which to test and demonstrate this. At a recent talk to the AAU, Chancellor Nancy Cantor addressed this relationship with the civic realm and the "vision of universities as civically-engaged anchors which expand campus boundaries by drawing upon multiple communities of experts." She referred to other times of massive social shifts in our country's recent history. "In the aftermath of World War II . . . the GI Bill sent more than 8 million students to college. After the launch of Sputnik, Congress doubled the appropriation for the National Science Foundation and fostered a multitude of academic careers through the National Defense Education Act."

At a local scale and without the dire consequences, the School of Architecture has experienced a time of change and reappraisal. As part of a process that all architecture schools submit to every six years, the School hosted an accreditation team in mid-April. This enormous undertaking involves students, faculty, and staff as archives of work are unearthed and every system and structure that determines the form of a school is presented. Perhaps an unintended consequence of this disruption is an enforced break in the academic cycle providing the opportunity to take stock and examine collectively this most recent arc in the School's long evolution.

For weeks this spring, the walls of our still newly-renovated building were laminated with images of student work. There was a spontaneous request from the School community to leave it up after the accreditation team's departure to respond to what this vast assemblage of projects from across the years could say about innovations in the teaching of design and representation and the way students learn. The breadth was impressive, reflecting wider disciplinary engagement from advanced technology and fabrication, to the economic and social context, to urban design and landscape.

Responding to the current flux in our discipline and the wider cultural and intellectual climate, the School has changed in the past six years and, like its ideal students, has become increasingly agile and provocative. Its ability to gauge the unexpected and often radical shifts in culture and technology will prefigure its ability to perform on a changing, global stage.



Mark Robbins, Dean

2006

July 2004: Mark Robbins named the ninth dean of Syracuse University School of Architecture and a full-time director of development is hired



April 2005: UPSTATE: A Center for Design, Research, and Real Estate officially launched with an inaugural symposium *Upstate/Downtown*, focusing on the shrinking city. Recent symposia include: *Public/Private* (2006), *Writing the City* (2007), and *From the Ground Up: Innovative Green Homes* (2009)



July 2005: Mark Linder begins his term as chair of the Syracuse Architecture graduate programs

August 2005: Randall Korman named associate dean at the School

September 2005: Graphic identity by Michael Rock of 2 x 4 launched with support from the Rubin Family Foundation and a director of communications and media relations position is created within the School



October 2005: "Graduate Sessions" seminars launched with Sylvia Lavin; students interview leading scholars and practitioners resulting in a student-published booklet

January 2006: The School moves downtown to the renovated Warehouse by Gluckman Mayner Architects during the Slocum Hall renovation



February 2006: SOM selected to design the Carmelo K. Anthony Basketball Center



March 2006: Syracuse Architecture Florence symposium "Transnational Dialogues on Urbanism," the first in a series in collaboration with the Targetti Foundation

July 2006: Ambitious recruiting program in U.S. urban centers nationwide initiated to increase undergraduate diversity, geographically and ethnically

September 2006: The first in a series of sponsored studios, the Pioneer Studio supported by Michael Falcone is led by visiting critic Lindy Roy

September 2006: Jeremy Edmiston is the inaugural Syracuse Architecture/Syracuse Center of Excellence Fellow for sustainability and leads the first graduate student Design and Technology Workshop

November 2006: "The Syracuse L" by Field Operations with CLEAR selected as the winning design for the Syracuse Connective Corridor Design competition



2007

January 2007: Julie Eizenberg leads the inaugural **Seinfeld Housing Initiative studio**, three studios sponsored by trustee **Judith Greenberg Seinfeld**



January 2007: Syracuse Architecture London Program launched



May 2007: School sponsors trip to **China**; recent trips include **Colombia** (fall 2008) and **Japan** (summer 2009)

July 2007: **Jonathan Massey** named the chair of the undergraduate program

August 2007: **Real Estate Development and Design** course introduced

September 2007: **Link Hall renovation** by **Toshiko Mori Architect** connecting the L.C. Smith School of Engineering and Slocum Hall completed

October 2007: School receives \$2.5 million for **UPSTATE**; and the **Syracuse Near Westside Initiative**



November 2007: **Syracuse Builds**: After the **Master Plan** exhibition opens featuring architecture and landscape projects on the University campus and in the city of Syracuse

2008

January 2008: **Technology Talks** introduced focusing on the integration of the newest technologies

March 2008: **Mark Robbins** named the University's first **Senior Advisor for Architecture and Urban Initiatives**

June 2008: **From the Ground Up: Innovative Green Homes** international competition for single-family affordable and green housing design announced



August 2008: A completely renovated **Slocum Hall** designed by **Garrison Architects** re-opens



September 2008: **Mobile Literacy and Arts Bus (MLAB)**, a re-designed RV by ten Syracuse art and architecture students, completed for community use



September 2008: A model of **Marcel Breuer's** proposed **Plas-2-Point House**, produced by two architecture students, displayed at **MoMA, NYC**

2009-2010

January 2009: **Syracuse Architecture NYC program**, with an inaugural studio taught by **Craig Dykers**, launched at new studio space in midtown Manhattan



January 2009: **Transdisciplinary Media Studio (TdMS)** begins, a University-wide collaboration to explore digital media and the built environment



February 2009: The first **Design Diversity Week** features "Transitions: Progressing Across and Shifting Cultural Landscape", an initiative of the **Society of Multicultural Architects and Designers**

May 2009: **From the Ground Up: Innovative Green Homes Exhibition** opens at **Van Alen Institute**

June 2009: **Syracuse Architecture** and the **LC Smith College of Engineering** receive a grant from the **NSF** for "Inspiring Innovation: Merging Pedagogical Paradigms from Engineering and Architecture"

August 2009: Students in the **Link House design/build studio** led by **Lea Ciavarrá** completed the modular sustainable home on the Near Westside, working with **VIP Structures, Home Headquarters, and Haven Homes**



August 2009: **Ernie Davis Residence Hall** designed by **Scogin Elam Architects** opens



September 2009: Two new faculty positions, including a **professor of practice**, created to accommodate the School's increased enrollment

September 2009: Syracuse chapter of **AIAS** launches **Freedom by Design** at the School

October 2009: Construction begins on winning designs of **From the Ground Up** competition by **ARO/Della Valle Bernheimer, Onion Flats** and **Cook + Fox** with completion planned for summer 2010



November 2009: Undergraduate program ranked **#2** in the nation by **DesignIntelligence**

March 2010: **Syracuse Center of Excellence in Environmental and Energy Systems (CoE)** headquarters by **Toshiko Mori Architect** opens in downtown Syracuse



July 2010: **Francisco Sanin** begins his term as chair of the graduate programs

Visiting Critic Studios for Spring 2010

Mitchell Joachim, TerreformONE+ Terrefuge

A leader in ecological design and urbanism, and a pop culture icon, **Mitchell Joachim** has been a guest on "The Colbert Report," and honored by **Rolling Stone Magazine** as an agent of change in "The 100 People Who Are Changing America." He is on the faculty at Columbia University and Parsons and is **Frank Gehry International Visiting Chair** at University of Toronto. Awards include the History Channel and Infiniti Excellence Award for the City of the Future. His project, **Fab Tree Hab**, has been exhibited at MoMA and widely published.



Mitchell Joachim, TerreformONE+ Terrefuge; *Fab Tree Hab*

Studio: Plastic Nation

Based on the premise that the American environment is overridden by consumption and super-sizing, this studio challenges students to create typological and technical solutions on the large-scale ecological crisis caused by plastic. Students are working on ways to re-purpose post-consumer plastic and imagining buildable concepts. Early in the semester, the group participated in a NYC field trip to **Material ConneXion**, an international consulting firm that seeks sustainable materials management solutions in the manufacturing sector.



Ammar Eloueini Digit-ALL Studio; *J-House*, New Orleans, under construction

Ammar Eloueini, Ammar Eloueini Digit-ALL Studio (AEDS)

Over a decade ago, **Ammar Eloueini** was among the first to experiment with CNC manufacturing processes in his design work. He is part of a new generation of architects linking design and fabrication techniques. Eloueini previously chaired the

Digital Media Program at the University of Illinois, Chicago and is winner of five AIA Design Excellence awards.

Studio: Ornament, Digital Fabrication, and Architecture

This studio is devoted to the design of a building along the riverfront in **New Orleans**, a city rich with historic buildings and

ornament. Students are exploring the use of digital techniques through animation and scripting. Since their site visit in February, students have been working on specific sites, each with a unique set of local issues. The semester will conclude with a site model of the area being built, including all projects.

Rogers Marvel Architects; *Governors Island*

Jonathan Marvel and Rob Rogers, Rogers Marvel Architects (RMA)

RMA is a multidisciplinary practice with a diverse range of projects, from parks and public spaces to furniture and products. They combine innovative materials, spaces, and forms to improve the urban. The partners have won many significant awards for public spaces in NYC as well as international acclaim. Along with **West 8** from Rotterdam, RMA won the international competition to redesign **Governors Island**.

Studio: Unconventional Convention Center

Students are designing a convention center for **Willets Point**, in the Queens, New York Iron Triangle district. Unlike the typical massive "stand-alone building" model overwhelming many U.S. cities today, students are being challenged to conceive a convention center "complex" that integrates into the city fabric and is scaled to a pedestrian environment. Consistent with the "unconventional" theme, students toured Willets Point during a February blizzard. Upon returning to the studio, they worked in teams to explore ideas and develop their designs.

Admissions Update

The Syracuse Architecture undergraduate program was ranked #2 in the nation by **DesignIntelligence** in the 2010 edition of "America's Best Architecture & Design Schools."

Application Statistics	2004	2010	Change
No. of applications	490	1130	+230%
Admit rate	50%	27%	-23%
No. of minority applicants admitted	50	128	+256%

Studios Abroad

Marina Brink: Studying abroad . . . at home

Having lived most of her life in Madrid, Spain, fifth-year student **Marina Brink** had a strong yearning to include Spain in her fourth-year study abroad experience. Marina received approval to study at the **Universidad Politécnica de Madrid** for her fall semester and **Syracuse Architecture Florence** in the spring. "The architecture program at UPM is very prestigious and competitive. How ironic that I went back home for my study abroad experience," says Brink.

Under the 'catedra' of **Javier Frechilla** and **José Manuel Lopez-Peláez**, Marina designed a proposal for the **Olimpica Villa in Madrid**. "I'll always appreciate that Syracuse Architecture was willing to support this study abroad option," said Marina. "The experience was tremendously enriching and helped me decide on a path for the future."

Marina Brink; *Villa Olimpica project*, Madrid

Santral Istanbul

In fall 2009, students in **Audrey Matlock's** visiting critic studio spent a week in Istanbul visiting the studio's design site, the **Architecture and Urban Design Center** in the **Santral Istanbul** educational and cultural complex, as well as the city's remarkable architectural landmarks. "Istanbul is one of the world's most interesting cities," says fourth-year student **Jeff Kamuda**. "From the mystical cobblestone alleys, bustling bazaars, and chaotic fish markets of the 'old' city, to the sleek boutiques, thriving nightlife, and cultural melting pot of the 'new' city, Istanbul was an explosion for the senses."



Jeff Kamuda in Istanbul

In the Slocum Gallery

Recent Exhibitions

In fall 2009, "Paper Architecture," an exhibition by **Michael Bierut** of **Pentagram** featuring posters from his 30-year career, opened with a gallery talk by Bierut. **Preston Scott Cohen** also gave a gallery talk



Michael Bierut "Paper Architecture" Exhibition Opening; November 5, 2009

during the opening reception for "The Architect's Work 7," a spring 2010 exhibition curated by Syracuse Architecture graduate students focusing on Cohen's **Tiayuan Museum** project.



Preston Scott Cohen (center) with Professor Brendan Moran (third from left) and graduate students at the April 15, 2010 opening

Faculty Competition Projects

In February, Syracuse Architecture faculty members presented the exhibition "Unzip: Competitions as Design Research" in the Slocum Gallery. The exhibition featured projects from eight faculty teams, showcasing design research and experimentation at a variety of scales for recent competitions around the world. Participating faculty members included: **Tomá Berlanda, Ted Brown, Julia Czerniak, Trevor Lee, Jonathan Lott, Sinéad Mac Namara, Anne Munly, Clare Olsen, Paul Michael Pelken, Francisco Sanin, Marissa Tirone, and Vasilena Vassilev.**

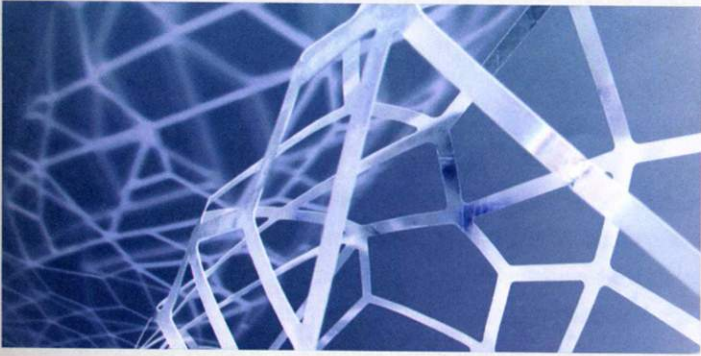
The exhibition, with an opening reception on February 11 widely attended by students and members of the Syracuse community, presented the work via looping video on flat screen monitors. The show provided a forum to "unzip" closed files and revisit moments in the design process that continue to influence, inspire, or challenge, while offering the opportunity to inform new productions. (See faculty competition projects on facing page)



Opening reception for "Unzip," February 11, 2010



Professor Francisco Sanin, "Unzip" Exhibition, with Professor Berlanda looking on



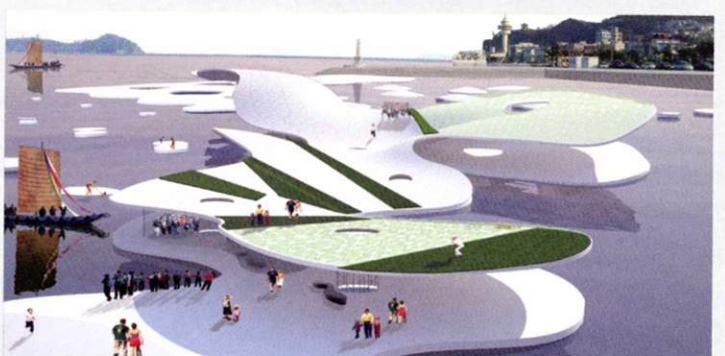
Design Team: Paul Michael Pelken, Vasilena Vassilev "Neurons and Feathers," Gimme Shelter, Phoenix, Arizona, 2009; MIT Mini Skyscraper Competition, Second Place, 2006



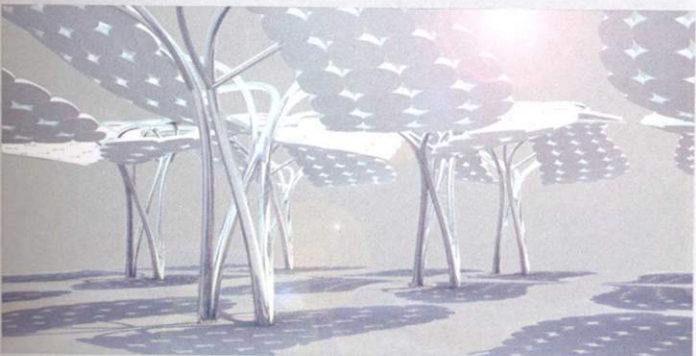
Design Team: lat45N architects: Tomà Berlanda, Lorenzo Bronner, Andrea Viglino Field, European 7 Competition, Bordeaux, 2007, first prize



Design Team: UPSTATE: Julia Czerniak, Trevor Lee The III Delphic Games; Architecture and the Ecological Arts Category, Jeju, 2009



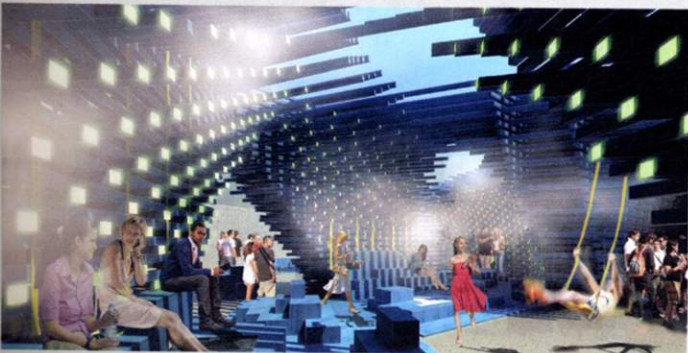
Design Team: Ted Brown, Sinéad Mac Namara, Anne Munly, Clare Olsen, Marissa Tirone, James Hepokoski, Matthew Herman and Steve Koh Thematic Pavilion, EXPO 2012, Yeosu, South Korea, 2009



Design Team: Clare Olsen, Marissa Tirone Phoenix Parasol, Gimme Shelter, Phoenix, Arizona, 2009



Design Team: Markus Hermann, Mingu Michael Deng, Paul Michael Pelken, Yi Jiang with Design Institute of CITIC South China Invited Design Competition for the "Guangzhou Asian Games Headquarters 2010," 2006



Design Team: PARA-Project: Jonathan Lott, Brian Price Rorschach 2007 / PS1 2008 / Open Fort 2009



Design Team: Francisco Sanin in collaboration with Joh Seung Young Haeinsa New Buddhist Monastery South Korea, 2004, winning entry

Alumni Focus

William Neburka '97

Co-Principal, Works Partnership Architecture (W.PA), Portland, OR

bSIDE6, a seven-story commercial workstudio building with ground floor retail space in Portland, Oregon, engages its context of arcaded buildings within the historical district like an accordion expanding out to the north over the sidewalk, creating an interstitial void between the frame and the building's face. City rooms project out over the sidewalk and provide pedestrian protection and glimpses of street and building activity, as well as views of the waterfront and downtown Portland. In 2007, **W.PA** won an Un-Built Merit Award from the **American Institute of Architects Portland** for the project.

W.PA: bSIDE6 / Photo by Stephen A. Miller



Kevin Sloan G'92

Principal & Founder, Kevin Sloan Studio, Dallas, TX

Urban Reserve, a modern Dallas neighborhood, is gaining widespread recognition for its innovative, environmentally responsible landscape design. Named one of the most Innovative Green Projects of 2009 by **Eco-Structure** magazine, **Kevin Sloan Studio** designed the landscape and influenced planning for the project. The ten-acre neighborhood, organized along a single street, is tilted 2 percent asymmetrically so water flows and creates a "wet" side, allowing plants to flourish during hot, dry summers. The "wet" and "dry" sides of the street filter and return water, an innovation that reinvents the typical residential street.

Kevin Sloan Studios: Urban Reserve / Photos by Charles Smith



Craig Scott '86 and Lisa Iwamoto

Co-Principals, IwamotoScott Architecture, San Francisco, CA

Voussoir Cloud is a site-specific installation designed by **IwamotoScott Architecture** in partnership with **Buro Happold** for **SCI-Arc Gallery** in Los Angeles. It explores the structural paradigm of pure compression coupled with an ultra-light material system. The "Cloud" fills the gallery with a system of vaults to be experienced both from within and from above. The vaults rely on each other and the three walls to retain their pure compressive form. The three-dimensional "petals," each strategically calibrated, were formed by folding thin wood laminate along curved seams. In 2009 the team received an **Architect Magazine R&D Award** for the project.

IwamotoScott Architecture: Edgar Street Tower



A 1300 square foot mixed-use structure, **Edgar Street Tower**, was designed in 2009 as part of the **Alliance for Downtown New York's Greenwich South** strategic framework exhibition, held in Zucotti Park in Lower Manhattan, near Ground Zero, September 29 – October 24. The design includes a gradient aperture structural skin, fiber optic day-lighting system, and air-filtering terrarium floors in the tower's atrium. "As in the **Voussoir Cloud** project, the **Edgar Street Tower** design involved use of parametric software in the initial stages of the design process, focusing on form-finding and formal development. The ultimate geometry of each project evolved through adapting to constraints of site and structural performance," said **Craig Scott. Iwamoto and Scott** will be Syracuse Architecture visiting critics in spring 2011.

IwamotoScott Architecture with Buro Happold: Voussoir Cloud

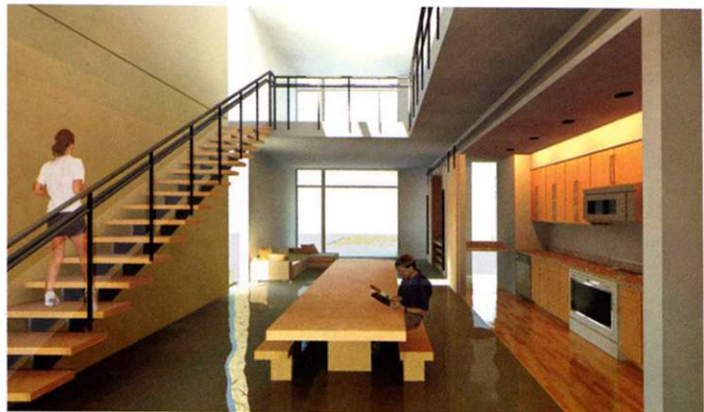


Christine McMahon '08 and Eric Zahn '08

24 Architecture

Eric Zahn and **Christine McMahon** were named finalists in the **FreeGreen "Who's Next? International Design Competition"** for their design of a sustainably-minded single-family residence.

24 Architecture: Interior One Point



Syracuse Architecture NYC Program: Two Years Later



Students working in Syracuse Architecture NYC studio, 171 Madison Ave.

Now in its fourth semester, **Syracuse Architecture NYC** has evolved into a thriving study away program, complementing the School's successful programs in Florence and London. The NYC program allows students to pursue studies in the history of the metropolis, urban morphology, planning and real estate development, and urban theory. "It's exciting to see the program running at full capacity. Students receive an immersive experience of architecture and urbanism, and unparalleled access to the city's rich resources and programming," says Syracuse Architecture professor **Jon Lott**, NYC Program Coordinator.

Students are taught by world-renowned practitioners including **Craig Dykers** of Snøhetta, and **Marc Tsurumaki** of LTL. **Gregg Pasquarelli** of SHoP taught the spring 2010 studio. Studios address architectural issues specific to New York City, allowing students to focus on urbanism, look critically into current issues, and generate site-specific solutions within the city. Two elective courses examine the city through historical perspectives and analytical forms of digital mapping/documenting.

Marc Tsurumaki (LTL) studio, fall 2009



Visit to the Hearst Tower, fall 2009





Students with Jon Lott, right, at the "Tent of Tomorrow," spring 2010

Students are encouraged to explore the city on their own. Each has an unlimited MTA card and unrestricted museum pass. A full membership to the **Architectural League of New York** provides access to all of the League's programming, including their lecture series, exhibitions, and tours. Students have visited spaces unavailable to the public including privately guided tours of the **Woolworth, Citicorp, Chrysler, Hearst, New York Times, and Bank of America** buildings, and access to interiors of the **New York Yacht Club, the University Club, Paul Rudolph's "Modulightor," and Philip Johnson's "Tent of Tomorrow."** Weekly outings to various cultural institutions, including

theatre performances and behind-the-scenes museum visits focus on the intersection of art and architecture.

Jennifer Hoi Ling Ha '10 was among the first students to participate in the NYC program. Says Jennifer, "My semester at the program in New York City during my fourth year helped shape my future. It was exciting to attend lectures at Columbia, meet architects and theorists from around the world, and participate in new and innovative projects. Syracuse Architecture fostered a unique and challenging cultural and educational experience, and opened the door to a wide range of prospects for the future."

Chrysler Building exterior (left) and spire armature (right), spring 2010 field trip



Brown-bag Lunches

Brown-bag lunch chats provide students with once-in-a-lifetime opportunities to meet informally with practitioners such as **Peter Eisenman, Toshiko Mori, and David Rockwell '79** in their offices.



Lisa Nicholas (Tepper Program), far left, and students meet David Rockwell, January 25, 2010

NYC Lecture Series

Syracuse Architecture NYC launched a lecture series in summer 2009, free and open to the public, with leading architects that have included **Joshua Prince-Ramus (REX), Shohei Shigematsu (OMA), Chris Lasch (Aranda/ Lasch), Bjarke Ingels (BIG), and Hilary Sample G'94 + Michael Meredith G'94 (MOS).**

Syracuse Architecture NYC Summer Studio

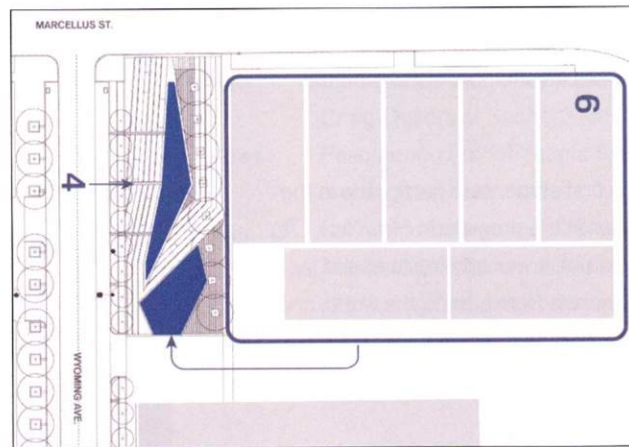
Syracuse Architecture will offer a nine-week intensive design studio this summer. Upper-level students will redesign and re-purpose a building on the North Shore waterfront of Staten Island with the development of an arts incubator. Successful projects will be presented to the client and Staten Island community and may inform eventual implementation. The **Council on the Arts and Humanities for Staten Island (COAHSI)** and Syracuse Architecture are partners in support of this studio that is funded by a **Rockefeller Cultural Innovation Fund** grant.

Near Westside Neighborhood Plan

Syracuse Architecture's **UPSTATE: Center for Design, Research, and Real Estate** continues its collaborative efforts towards revitalization of Syracuse's **Near Westside** neighborhood. The group is currently working on the development of a schematic Neighborhood Plan to guide infra-structural investment. The plan has six components: Green Infrastructure, Alternative Energy, Circulation Networks, Lighting and Security, Zoning / Land Use, and Signage / Wayfinding. They are currently working to engage groups of neighborhood residents in the creation of the plan that includes reduced travel lanes, added bike lanes, a pedestrian crosswalk, and added green infrastructure.



The area created serves as a dynamic public space. The foundation systems, tree wells and basin walls provide opportunities for street furniture systems



The NWS Rain Water Basin, located at the intersection of Marcellus Street and Wyoming Avenue, captures roof and surface runoff from the adjacent lot and buildings. This water is filtered through a grid of native aquatic vegetation and then continuously recycled through an open water basin with a wind-powered water pump.

UPSTATE: Hosts Event on Future of Rust Belt Cities

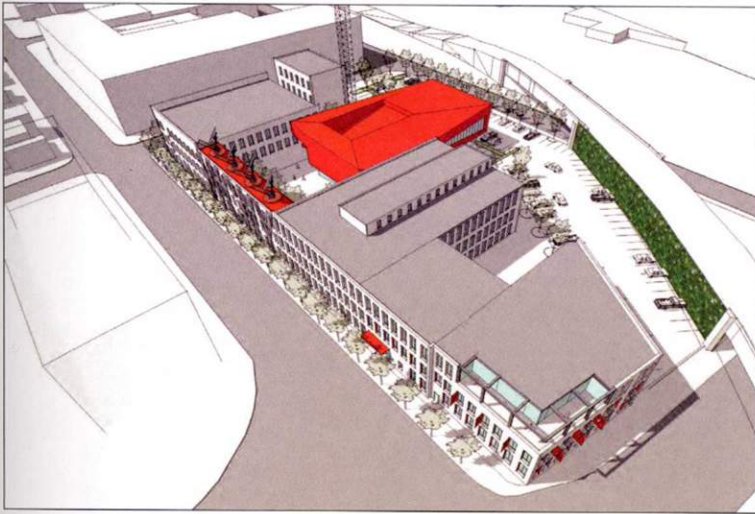
UPSTATE: will host a conference at Syracuse Architecture from October 13-14, 2010 entitled "**Formerly Urban: Projecting Rust Belt Futures,**" focusing on the future of shrinking cities in America's Rust Belt, underscoring the centrality of design and innovation in their revitalization. Experts from architecture, planning, landscape architecture and urbanism will consider the ways in which design innovation can create urbanity in weak market cities whose urban character has evolved radically due to economic, demographic, and physical change.



Rendering shows lane reduction, bike lanes, and crosswalk added to West Street

Case Supply Warehouse Renovation Home to Public Broadcasting Headquarters

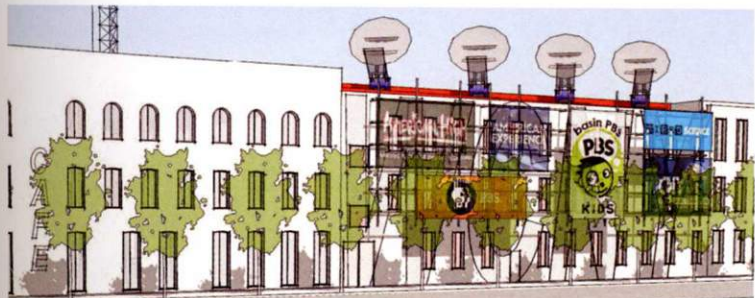
Julie Eizenberg of **Koning Eizenberg Architecture**, Santa Monica, a specialist in renovation and reuse, is currently working with local firm **King & King** on designs for the **WCNY Headquarters** to be located in the Near Westside neighborhood. Eizenberg's firm is renovating the existing **Case Supply Warehouse**, creating a community presence around a new courtyard with studios and gallery space within an expansive contemporary framework and a rhythmic façade along Marcellus Street. Plans are in place to move forward on the project during the summer. Eizenberg taught a visiting critic studio at the School in spring 2007 exploring possibilities for the district's warehouses.



Birdseye view from the Southwest showing the new WCNY structure in orange



The new structure housing the WCNY studio has a transparent wall and extends over the north parking lot, generating an active presence along the Fayette Street corridor



The south façade of the warehouse is retained and becomes more porous, activating Marcellus Street and encouraging the Near Westside neighborhood to use the courtyard space and to become involved with this new community asset

Projects in Progress on the Near Westside



North façade rendering of Lincoln Supply renovation by Brininstool + Lynch, featuring planted "Green Screen"

Brininstool + Lynch's renovation of the **Lincoln Supply Building** into ten live/work artist lofts with leasable mixed-use and commercial space is expected to be complete and occupied by August of this year.



R-House, Otisco St., Syracuse

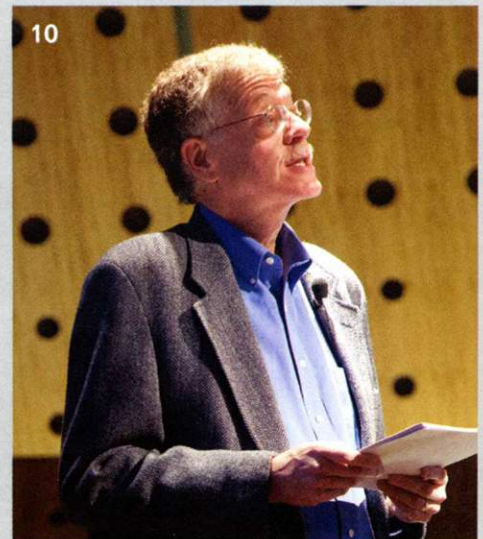
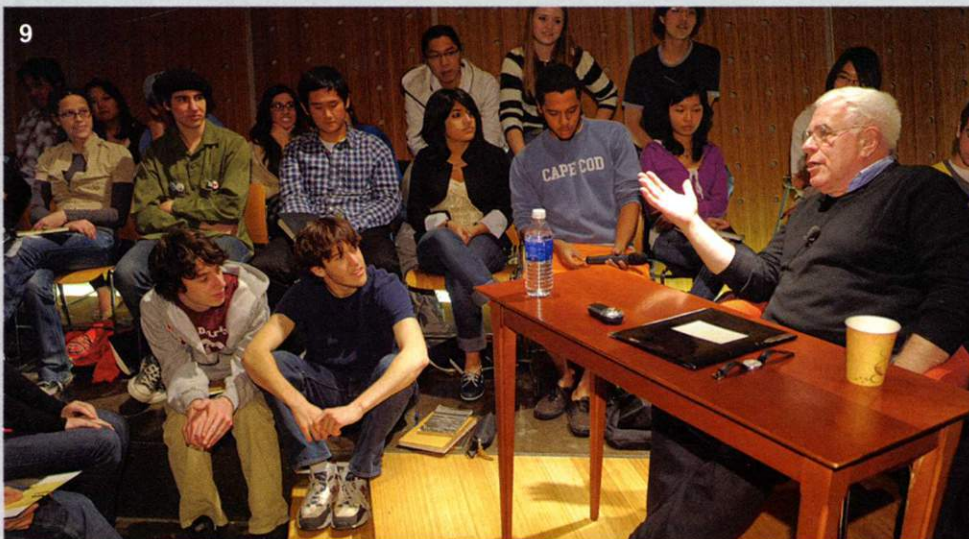
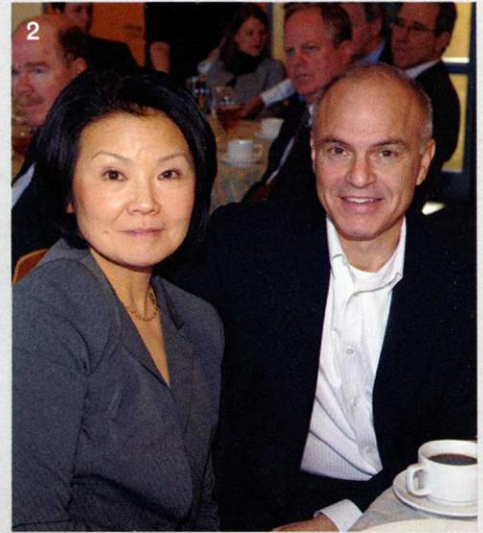
R-House, a winning design by **Della Valle Bernheimer + ARO** for the "From the Ground Up" housing competition currently under construction in the Near Westside neighborhood, won a **2010 AIA NY Design Award**.

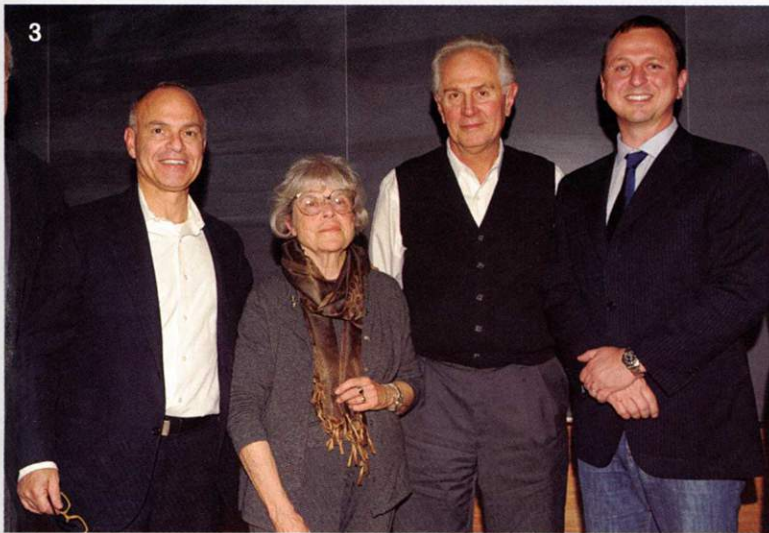


Students work on floor boards that have been ripped up and will be recycled into the 601 Tully project

A group of Syracuse University art and architecture students led by **Marion Wilson**, Director of Community Initiatives in the Visual Arts, is designing and building a multi-purpose space to house neighborhood programming; architecture professor **Anda French**, along with **Engagement Fellow** and SU architecture alum **Zachary Seibold** are assisting on the project.

Events at Syracuse Architecture





- 1 **"From the Ground Up: Innovative Green Homes"**
Groundbreaking: Marilyn Higgins, Syracuse University Vice President for Community Engagement and Economic Development; **Alys Mann**, Home HeadQuarters Director of Neighborhood Planning & Property Redevelopment; **Kerry Quaglia**, Home HeadQuarters Executive Director; **Carole Horan**, Syracuse Near Westside Neighborhood resident; **Nancy Cantor**, Syracuse University Chancellor; **Mark Robbins**, Syracuse Architecture Dean; **Jared Della Valle**, Della Valle Bernheimer, competition winner; **Rick Cook**, Cook + Fox, competition winner; **Pam Campbell**, Cook + Fox, competition winner; **Adam Yarinsky**, ARO, competition winner; Otisco Street, Syracuse; October 21, 2009



- 2 **Syracuse Center of Excellence in Environmental and Energy Systems Headquarters Dedication:** Toshika Mori, the Center's design architect, and **Mark Robbins**; East Washington Street, Syracuse, March 5, 2010

- 3 **Gregg Pasquarelli "Out of Practice" Werner Seligmann Lecture:** **Mark Robbins**, **Jeanne Seligmann**, **Art McDonald**, **Gregg Pasquarelli**; Slocum Auditorium, November 10, 2009

- 4 **Audrey Matlock "MAXIMUM/minimum" Lecture;** Slocum Auditorium, October 27, 2009

- 5 **Alejandro Zaera-Polo "Envelopes" Lecture;** Slocum Auditorium, March 25, 2010

- 6 **Heather Roberge "The Synthetic Real" Lecture;** March 9, 2010

- 7 **Syracuse University iSchool Windows Project Opening Reception:** Third-year architecture student **Tom Day** with his winning installation; Hinds Hall, October 28, 2009

- 8 **Annabelle Selldorf "Architecture and Context" Lecture;** Slocum Auditorium, November 3, 2009

- 9 **Peter Eisenman "Crises" Lecture;** Slocum Auditorium, November 20, 2009

- 10 **Jeffrey Meikle Lecture at "Plastic Modernities" Symposium,** presented by the Transdisciplinary Media Studio; Slocum Auditorium, November 13, 2009



- 11 **Cecil Balmond "Informal Networks" Lecture;** Cecil Balmond, Professor **Lawrence Davis**, Syracuse Architecture Florence Coordinator, Florence, April 7, 2010

SYRACUSE ARCHITECTURE

201 Slocum Hall
Syracuse, New York 13244-1250

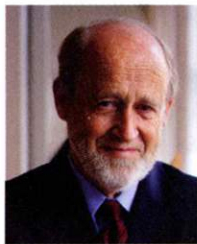
Non-Profit Organization
U.S. Postage
PAID
Syracuse University
Syracuse, NY



Professor Francisco Sanin named Graduate Chair

Professor **Francisco Sanin** has been appointed the new chair of the graduate program at Syracuse Architecture, effective July 1, 2010. Sanin is internationally known as an urban designer, noted for his research in the history

and theory of urban form. He was the coordinator of Syracuse Architecture's Florence center from 2004-2008 and has had extensive teaching experience worldwide, including Princeton University and the Architectural Association School of Architecture in London. He is responsible for developing a connection between Medellin, Colombia and Syracuse by introducing a field trip program that studies the work of **Sergio Fajardo**, former mayor of Medellin and current presidential candidate, who led a revitalization of the city through architectural projects in some of the poorest areas of the city. Sanin follows **Mark Linder**, Chair of Graduate Programs since fall 2005.



Bruce S. Fowle '60 Endowed Lecture in Sustainable Design

The Syracuse University School of Architecture announces the establishment of the **Bruce S. Fowle '60 Endowed Lecture in Sustainable Design**. The endowment will be funded through an estate gift of \$150,000 by **Bruce S. Fowle**

'60, founding principal of **FXFOWLE Architects** in New York, NY, and will support an annual lecture and additional programming that will further the School's efforts in sustainable design and environmental education. In committing to the fund, Fowle drew upon his own many years of experience at the forefront of the sustainable design movement — including the design of the country's first green skyscraper. "It wasn't too many years ago in the academy that sustainability was the purview of one or two professors and taught only as an elective," he says. "My goal has always been to see it integrated into all levels of the curriculum and I am hopeful that this fund will continue to support that effort at Syracuse." "The School of Architecture has benefited from Bruce's involvement and support for more than fifty years and I am pleased to know that his name will be associated with our work in sustainability education for many years to come," said Dean **Mark Robbins**.



Upcoming Miami Alumni Event

Dean **Mark Robbins** and the **Syracuse Architecture Advisory Board** invite alumni and friends to attend a reception during the 2010 AIA convention in Miami Beach. The reception will be co-hosted by **Terence K. Riley**, Architect, K/R, and held at his home, 168 NE 43rd Street, Miami, FL 33137, June 10 from 5:30—7:30 p.m.

Follow Syracuse Architecture on Facebook and Twitter.

