

BEADS: Journal of the Society of Bead Researchers

Volume 22 (2010)

Article 9

1-1-2010

Captions and Color Plates (v. 22, 2010)

Follow this and additional works at: <https://surface.syr.edu/beads>



Part of the [Archaeological Anthropology Commons](#), [History of Art, Architecture, and Archaeology Commons](#), [Science and Technology Studies Commons](#), and the [Social and Cultural Anthropology Commons](#)

Repository Citation

(2010). "Captions and Color Plates (v. 22, 2010)." *BEADS: Journal of the Society of Bead Researchers* 22. Available at: <https://surface.syr.edu/beads/vol22/iss1/9>

This Image is brought to you for free and open access by SURFACE at Syracuse University. It has been accepted for inclusion in BEADS: Journal of the Society of Bead Researchers by an authorized editor of SURFACE at Syracuse University. For more information, please contact surface@syr.edu.

BEADS

Journal of the Society of
Bead Researchers



2010

Vol. 22



Plate IA. Bauxite: **Top:** Forming bead blanks from the rough stone at Abompe, Ghana. **Bottom:** Using a bow drill to perforate the beads (all photos by the author unless otherwise noted).

Plate IC. Bauxite: **Top:** Boulder of dark stone with a 60-cm-long polishing surface. **Bottom:** The largest polishing stone, 4 meters long, close to the larger Abompe cave.



Plate IB. Bauxite: **Top:** Boadu carrying a load of dug bauxite (courtesy: Emily Henke, Global Mamas). **Bottom:** Bauxite chips in a crack in the rock floor of the large Abompe cave.

Plate ID. Bauxite: **Top:** Digger Sam at the mouth of his pit. **Bottom:** Sam's partner, Boadu, digging bauxite using a digging stick with a chisel-like blade (courtesy: Emily Henke, Global Mamas).



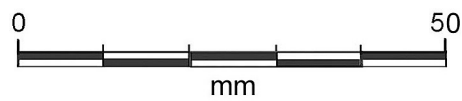


Plate IIA. *Chotuna*: Bead varieties 1-10C (all photos: C. Donnan).

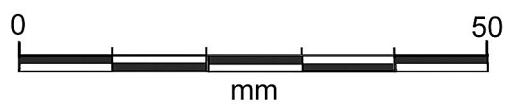


Plate IIIA. *Chotuna*: Bead varieties 11-32.



Plate IVA. *Chotuna*: Enlarged views of select bead varieties. Variety 18 stripe colors are blue (B), translucent green (TG), and red (R).

Plate IVC. *Chotuna*: Burial 1, an infant, during excavation.



Plate IVB. *Chotuna*: Burial 1 (lower left), Burial 2 (right), and Burial 3 (upper center) during excavation.

Plate IVD. *Chotuna*: The beads at the right wrist of Burial 1.





Plate VA. *Chotuna:* The beads at the left wrist of Burial 1.

Plate VC. *Bahamas:* **Top:** Tyler G. Hill sorting shell artifacts from the 2010 excavation at the Minnis-Ward site (SS-3)(photo: R. Kim). **Bottom:** Shell beads in various stages of manufacture recovered in 2004 from SS-3/04-2 at the Minnis-Ward site (ca. A.D. 985)(photo: J. Blick).



Plate VB. *Bahamas:* **Top:** The 2009 2x2 m excavation at the Minnis-Ward site (SS-3), San Salvador (photo: J. Blick). **Bottom:** Drawing a soil profile at the site, June 2010 (photo: R. Kim).

Plate VD. *Bahamas:* **Top:** Several bead blanks and the resultant circular disc beads (SS-3/10-1). Note the unfinished drill hole in blank 2. **Bottom:** A bead blank and a variety of finished shell beads (SS-3/10-5)(photos: R. Kim and T. Hill).

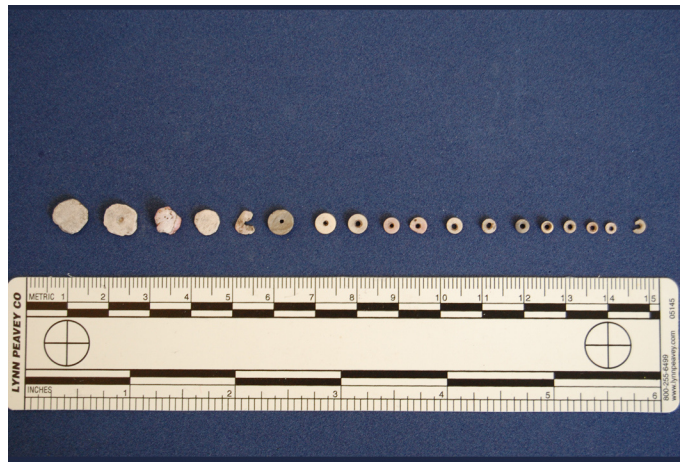




Plate VIA. Bahamas: **Top:** A suite of beads from SS-3/10-4 showing the various stages of manufacture. **Bottom:** “Ghost” beads in various stages of manufacture. The fourth bead dates to ca. A.D. 985 (photos: R. Kim and T. Hill).



Plate VIB. Bahamas: **Top:** A variety of *Oliva* “tinkler” beads (ca. A.D. 900-1400). **Bottom:** Cylindrical diorite bead (SS-3/ST3-10); naturally perforated worm-shell bead (SS-3/04-3); unfinished rectangular coral bead (SS-3/ST-A9) (photos: R. Kim and T. Hill).

Plate VIC. An early historic Taíno chief’s belt with *zemi* figure from the Greater Antilles, ca. 1530. It is made of cotton and decorated with white and red shell beads, likely *Strombus* and *Chama sarda* (Museum für Völkerkunde, Vienna).

