

Syracuse University

**SURFACE**

---

Full list of publications from School of  
Architecture

School of Architecture

---

Spring 2011

## A Didactic Architecture: Rural Early Education

Vasiliy Lakoba  
*Syracuse University*

Follow this and additional works at: <https://surface.syr.edu/arc>



Part of the [Architecture Commons](#)

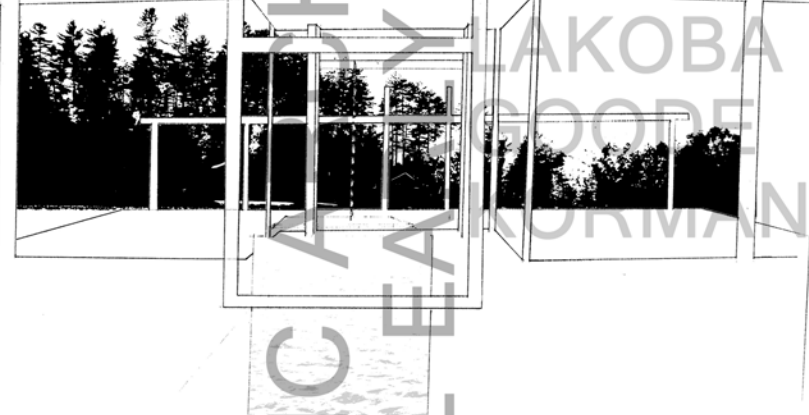
---

### Recommended Citation

Lakoba, Vasiliy, "A Didactic Architecture: Rural Early Education" (2011). *Full list of publications from School of Architecture*. 148.

<https://surface.syr.edu/arc/148>

This Thesis is brought to you for free and open access by the School of Architecture at SURFACE. It has been accepted for inclusion in Full list of publications from School of Architecture by an authorized administrator of SURFACE. For more information, please contact [surface@syr.edu](mailto:surface@syr.edu).



A DIDACTIC ARCHITECTURE  
FOR RURAL EARLY EDUCATION

LAKOBA  
GOODE  
NORMAN

## **ACKNOWLEDGEMENTS**

**Terrance Goode, primary advisor**

**Randall Korman, secondary advisor**

**Jean-Francois Bedard, reviewer**

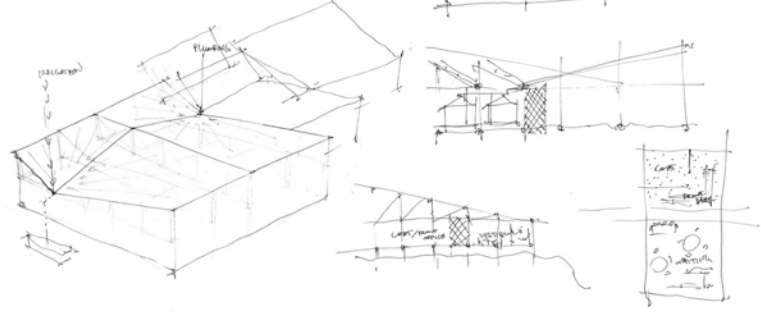
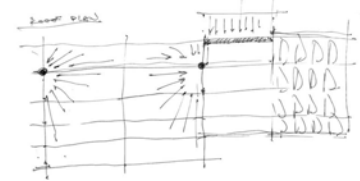
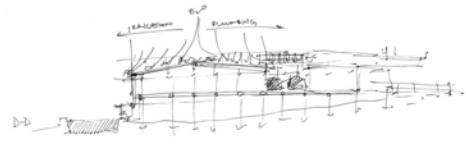
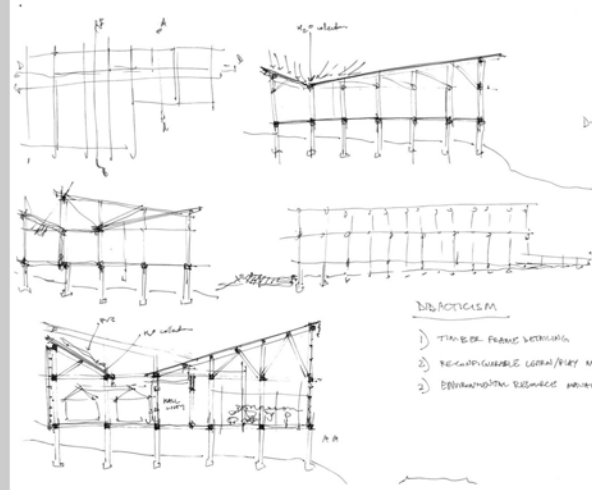
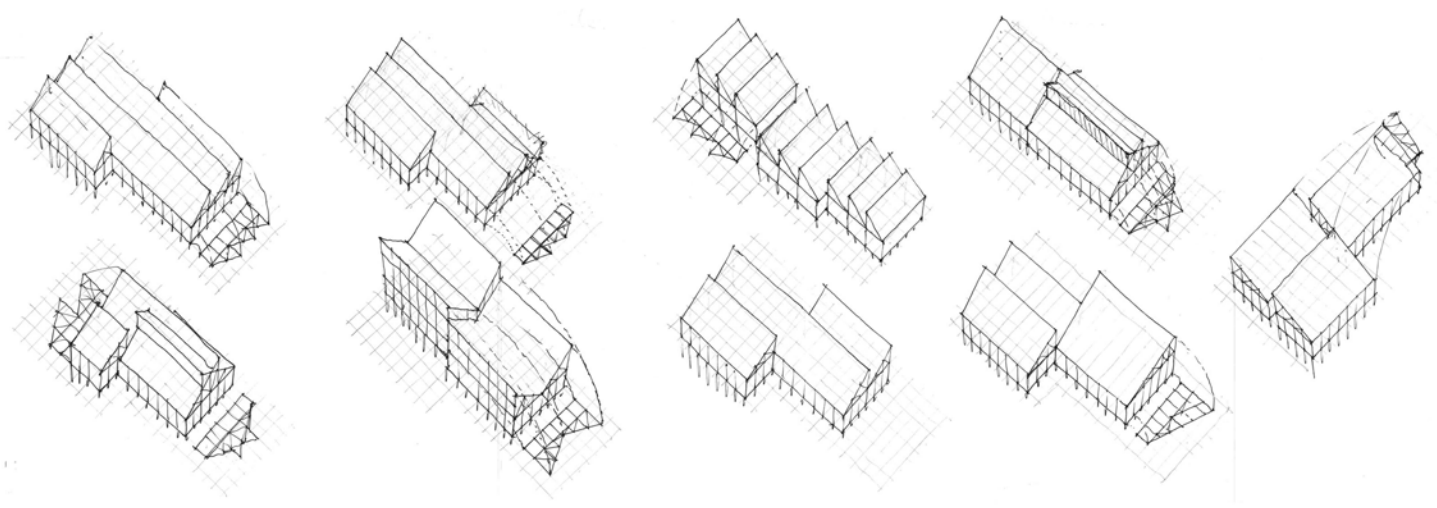
**Timothy Stenson, reviewer**

**Paul Crovella, instructor**

**Simon Taveras, wood shop monitor**

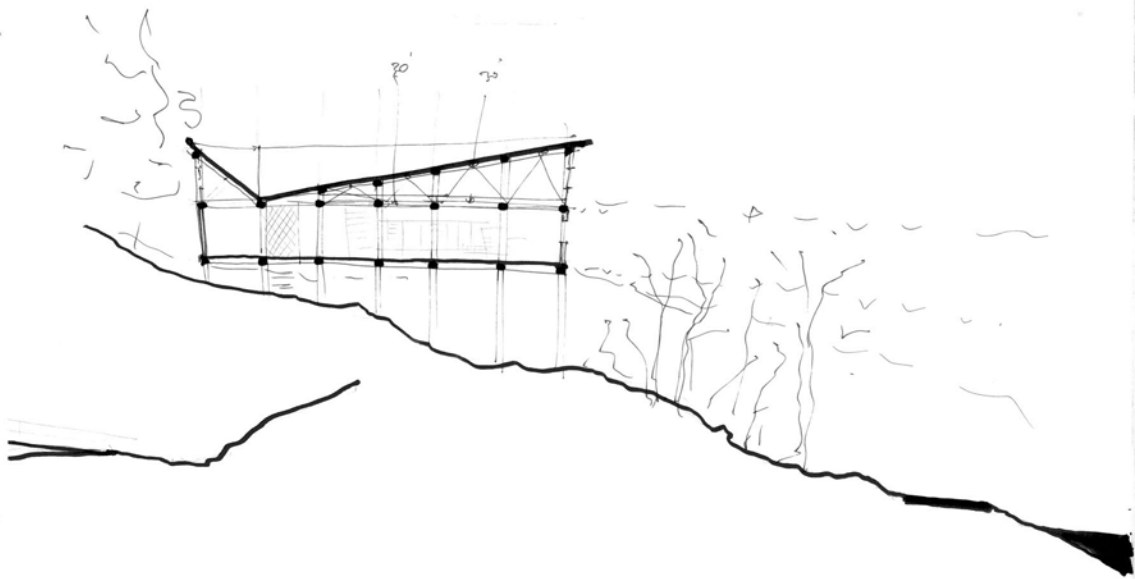
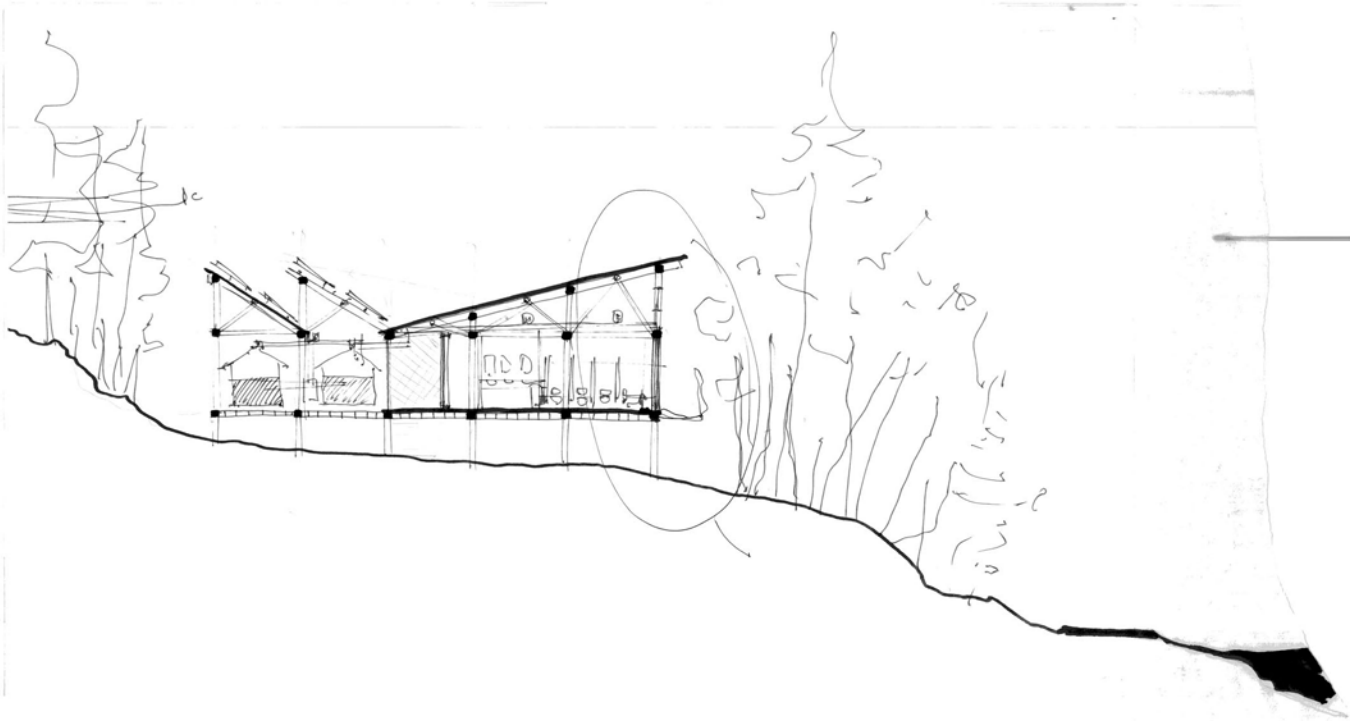
**Eric Holzwarth, honors advisor**

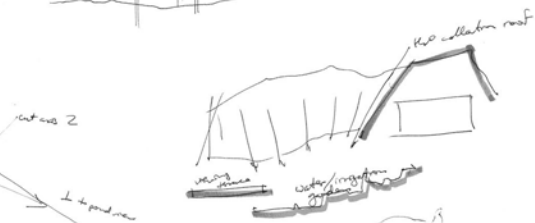
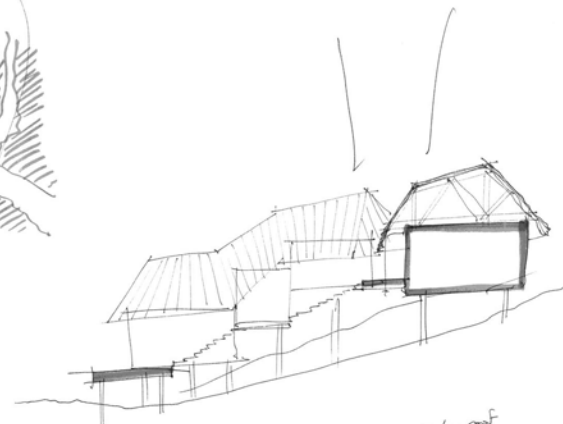
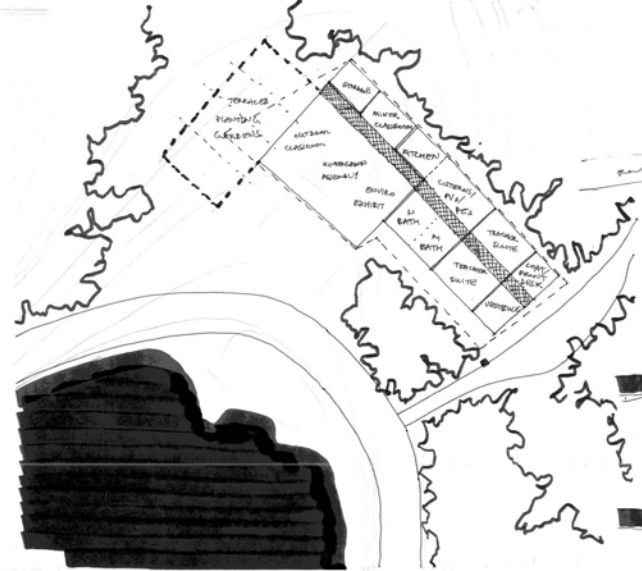
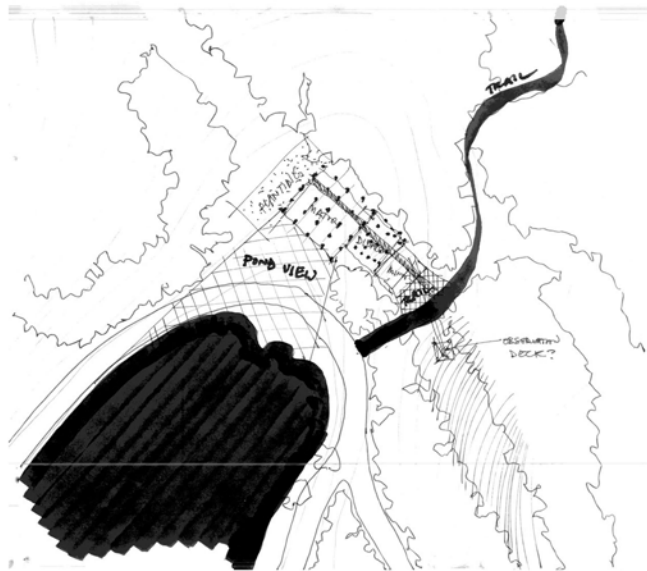


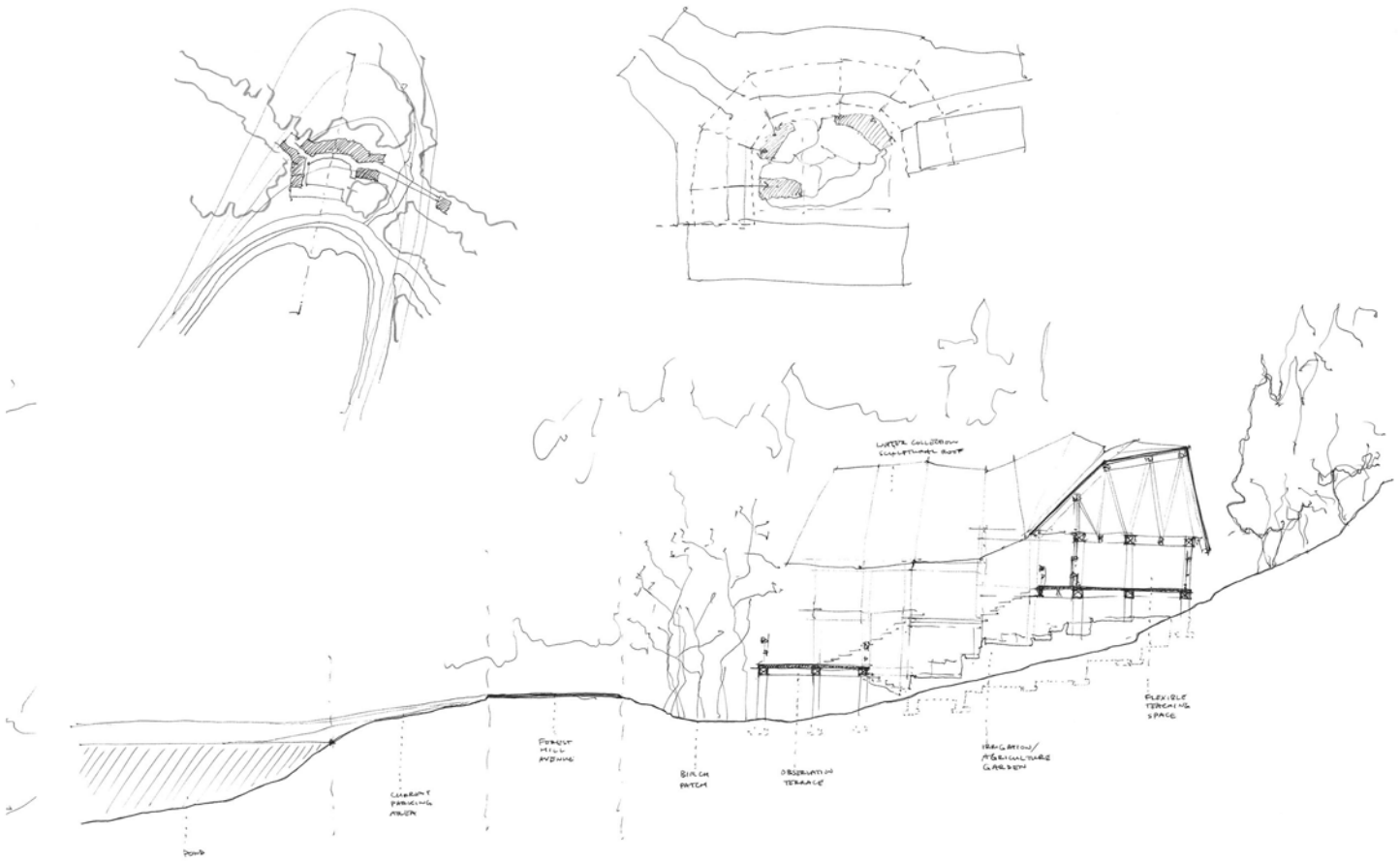
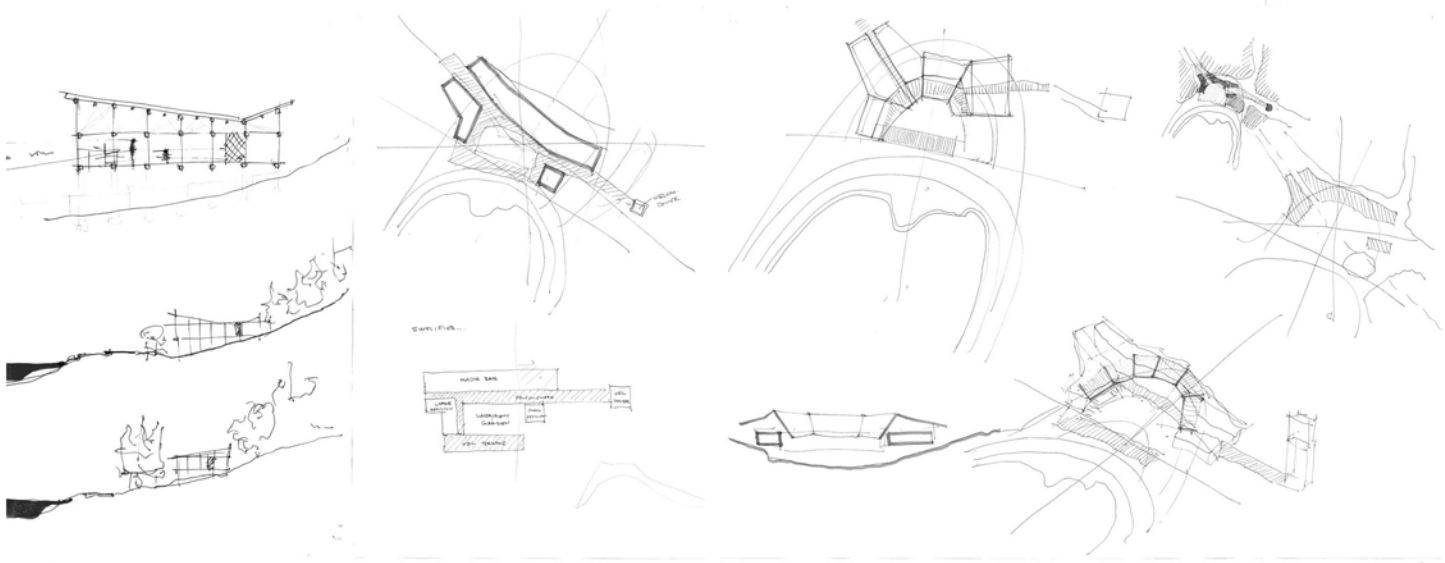


BIBACTICISM

- 1) TIMBER FRAME STRUCTURE
- 2) RECONFIGURABLE LOBBY/MULTI-USE
- 3) BIRKENHEAD RESIDENCE PROJECT EFFECT.

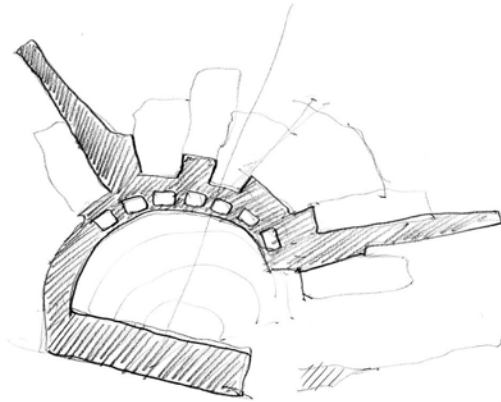




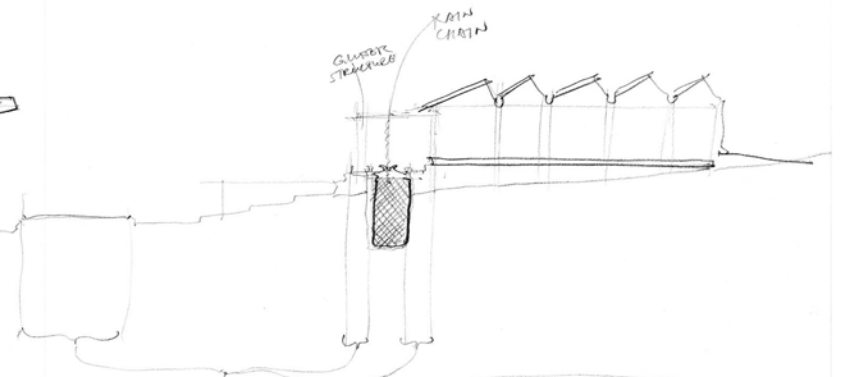




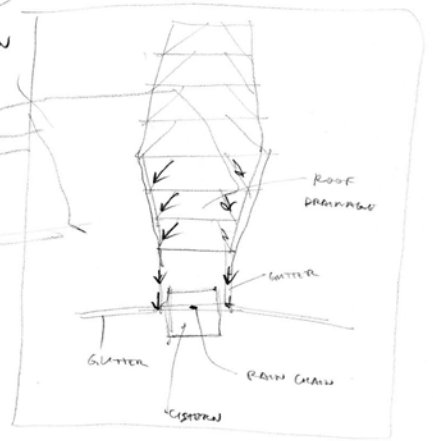
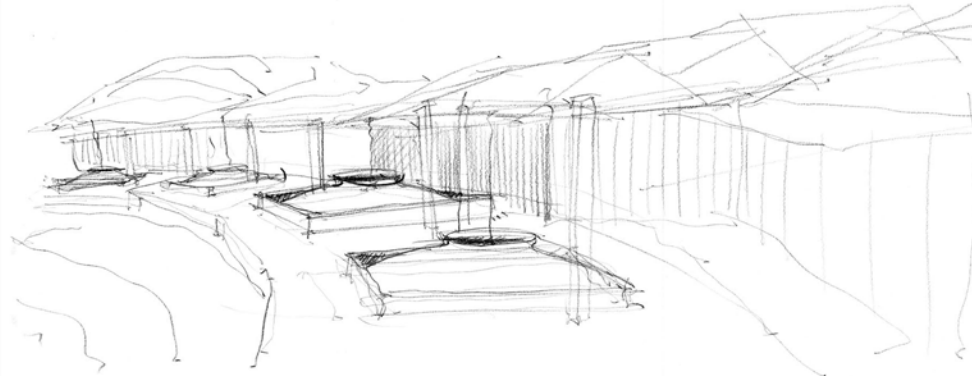
CISTERNS



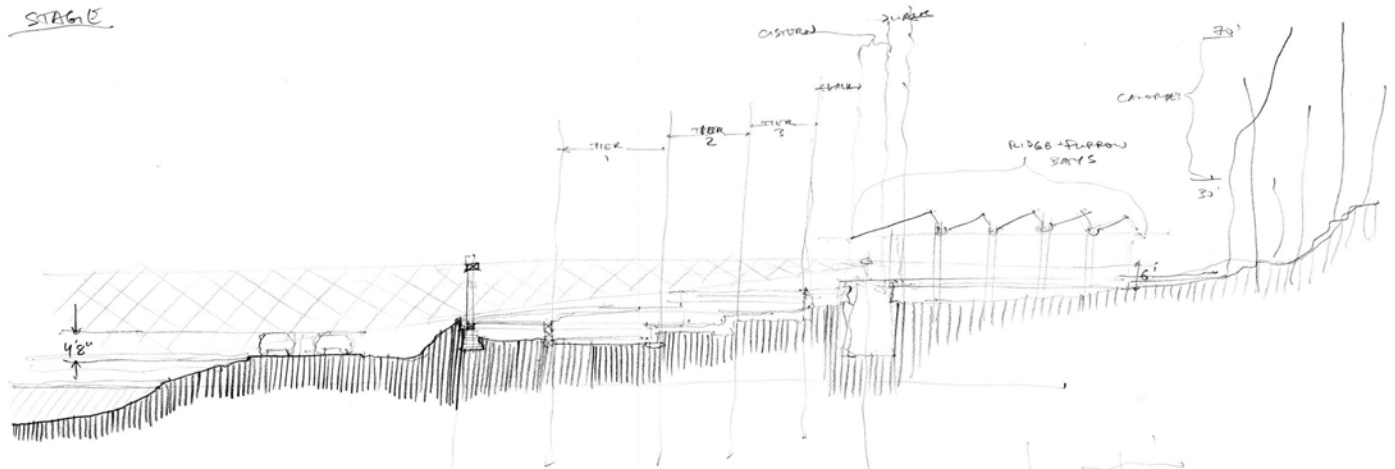
- DECENTRALIZED
- WATER PERSED ON CIRCULATION



REMAINING CIRCULATION



STAGE



more backfill!  
less wall!

160'

