

Syracuse Scholar (1979-1991)

Volume 6
Issue 2 *Syracuse Scholar* Fall 1985

Article 19

9-15-1985

Lisa Nirenberg

Follow this and additional works at: <https://surface.syr.edu/susolar>



Part of the [Fine Arts Commons](#)

Recommended Citation

(1985) "Lisa Nirenberg," *Syracuse Scholar (1979-1991)*: Vol. 6 : Iss. 2 , Article 19.
Available at: <https://surface.syr.edu/susolar/vol6/iss2/19>

This Article is brought to you for free and open access by SURFACE. It has been accepted for inclusion in *Syracuse Scholar (1979-1991)* by an authorized editor of SURFACE. For more information, please contact surface@syr.edu.



Self-portrait with Velasquez
Pencil on paper
22" x 30"

Lisa Nirenberg

NEW BRITAIN, CONNECTICUT

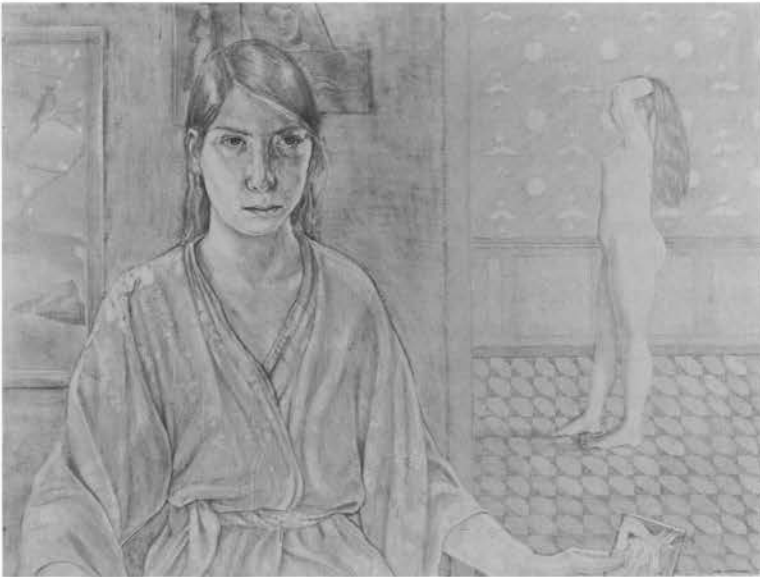
Lisa Nirenberg was born and raised in New York City. She studied at the Art Students League before attending the Rhode Island School of Design, where in 1980 she received a B.F.A. in painting. Nirenberg's work has been exhibited throughout New England and New York, including solo shows at the Ingber Gallery in New York City and the Woods-Gerry Gallery in Providence, R.I. Group shows include "Small Works" at the 80 Washington Square East Galleries, New York City; "Still Lifes" at the Leonarda di Mauro Gallery, New York City; Hudson River Museum, Yonkers, New York; and the New Haven Paint and Clay Club, where she received the award for best painting and inclusion in the gallery's permanent collection. In 1982, Nirenberg received a support grant from the Elizabeth Greenshields Foundation and the Simon R. Kane Memorial Award. In addition, she has received fellowships from the Yaddo Colony and the Millay Colony for the Arts. Her paintings are in the permanent collections of the Bellevue Health and Hospital Center, the Courant Institute of Mathematical Sciences of New York University, and the Ingber Gallery, among others. She is represented in New York by Roberto White and Associates. She will be presented in a one-person exhibition at the University of Connecticut, Waterbury, in the spring of 1986.

Solo Exhibitions

- 1986 University of Connecticut, Waterbury, Conn.
- 1983 Ingber Gallery, New York, N.Y.
- 1981 City without Walls Gallery, Newark, N.J.
- 1980 Woods-Gerry Gallery, Providence, R.I.
- 1976 Renner Gallery, Vincennes, Ind.

Group Exhibitions

- 1985 *Patterns*, Mill Gallery, Guilford, Conn.
University of Hartford, Hartford, Conn.
Small Works, 80 Washington Square East Galleries, New York, N.Y.
New Haven Paint and Clay Club, New Haven, Conn.
Grove Street Gallery, Worcester, Mass.
- 1984 Milford Fine Arts Council, Milford, Conn.
- 1983 Hudson River Museum, Yonkers, N.Y.
5 Towns Gallery, Long Island, N.Y.
- 1982 City without Walls Gallery, Newark, N.J.
Hudson River Museum, Yonkers, N.Y.
Still Lifes, Leonarda di Mauro Gallery, New York, N.Y.
5 Towns Gallery, Long Island, N.Y.
Artists Mere Image, Rotunda Gallery, Brooklyn, N.Y.
- 1978 *Private Parts*, Electron Movers Gallery, Providence, R.I.



Self-portrait
Pencil on paper
22" x 30"



The Card Players
Pencil on paper
20" x 30"



Self-portrait with Mask
Pencil on paper
22" x 30"