

Syracuse University

SURFACE at Syracuse University

International Programs

International Programs

Summer 8-7-2020

Patriarchy and COVID-19

Maram Milad

Follow this and additional works at: <https://surface.syr.edu/eli>



Part of the [Social and Behavioral Sciences Commons](#)

The views expressed in these works are entirely those of their authors and do not represent the views of the Fulbright Program, the U.S. Department of State, or any of its partner organizations.

Recommended Citation

Milad, Maram, "Patriarchy and COVID-19" (2020). *International Programs*. 102.
<https://surface.syr.edu/eli/102>

This Poster is brought to you for free and open access by the International Programs at SURFACE at Syracuse University. It has been accepted for inclusion in International Programs by an authorized administrator of SURFACE at Syracuse University. For more information, please contact surface@syr.edu.

PATRIARCHY

and COVID-19

Maram Milad - LIBYA

OBJECTIVES:

THIS RESEARCH AIMS TO BRING ATTENTION TO THE EFFECTS OF PATRIARCHY ON WOMEN AND THE HARD TRUTH ABOUT THE INCREASE OF DOMESTIC VIOLENCE DURING THE COVID-19 PANDEMIC.

INTRODUCTION:

“THE GREATEST THREAT TO WOMEN (AND BY EXTENTION HUMANITY) IS THE GROWTH AND ACCEPTANCE OF MISOGYNISTIC, AUTHORITARIAN AND VIOLENT CULTURE OF MILITARISM” – AMINA MAMA

PROBLEM:

1. DOMESTIC VIOLENCE: UN WOMEN HAS REPORTED A GLOBAL RISE IN DOMESTIC VIOLENCE CASES. NEW EVIDENCE RELEASED BY FDA REVEALS THAT FOR EVERY 3 MONTHS THE LOCKDOWN CONTINUES AN ADDITIONAL 15 MILLION CASES OF GENDER-BASED VIOLENCE ARE EXPECTED.

2. WOMEN ON THE FRONTLINE ARE IN A HIGHER RISK: “WHO” HAS REPORTED THAT ABOUT 70% OF WORKERS IN HEALTH AND SOCIAL SECTOR ARE FEMALE WHICH CAN LEAVE WOMEN IN A HIGH RISK OF CONTAGION EXPOSURE.

3. WOMEN LOST THEIR JOBS: ACCORDING TO UN REPORTS, THE PANDEMIC IS EXPECTED TO RESULT IN THE LOSS OF 1.7 MILLION JOBS IN THE ARAB REGION, INCLUDING 700,000 JOBS HELD BY WOMEN.

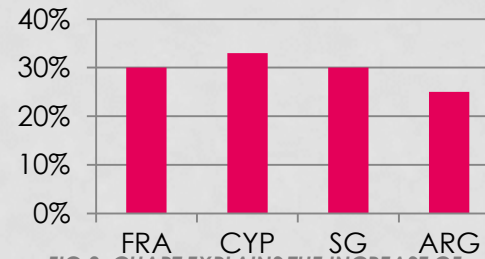
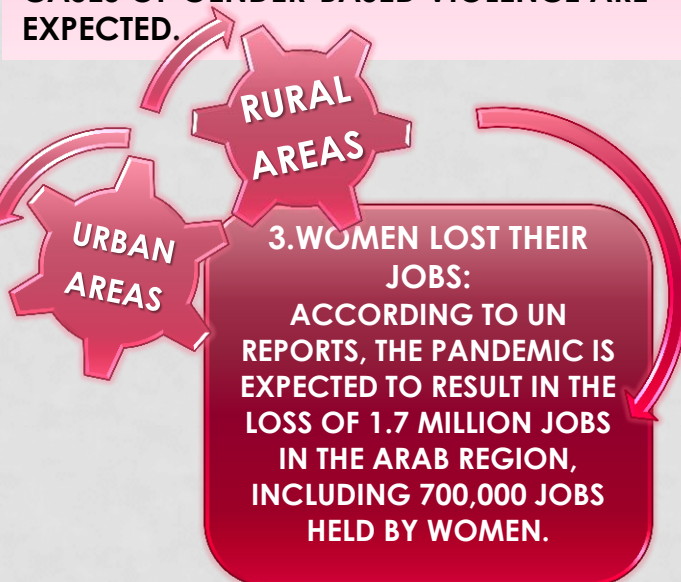


FIG 2. CHART EXPLAINS THE INCREASE OF DOMESTIC VIOLENCE DURING COVID-19.



FIG 3. A ROHINGYA WOMAN AT A REFUGEE SETTLEMENT FOR WOMEN WHO HAVE BEEN SEPARATED FROM THEIR HUSBANDS IN BANGLADESH. PHOTO BY: UN WOMEN/ALISON TOYCE.



FIG 4. AN ILLUSTRATION FOR THE REASON BEHIND (CHALLENGE ACCEPTED) CAMPAIGN.

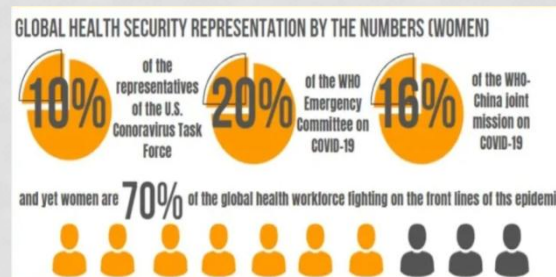


FIG 1. AN ILLUSTRATION FOR THE HEALTH WORKFORCE DURING COVID-19.

SOLUTIONS:

NATIONAL RESPONSES TO COVID-19 MUST INCLUDE:

1. SERVICES TO ADDRESS VIOLENCE AGAINST WOMEN, SUCH AS HOTLINE SERVICE.
2. DOMESTIC VIOLENCE SHELTERS WITH PSYCHOLOGICAL SUPPORT.
3. A STRONG MESSAGE FROM LAW THAT ENSURES SAFETY OF WOMEN
4. FINANCIAL SUPPORT FOR UNEDUCATED WOMEN AND WOMEN WHO LOST THEIR JOBS.
5. CREATE AN EMERGENCY ALARM SYSTEMS IN PHARMACIES AND GROCERY STORES.
6. INTENSIFY THE EFFORTS OF HUMANITARIAN ORGANIZATIONS.

REFERENCES:

<https://www.un.org/en/coronavirus/un-supporting-%E2%80%98trapped%E2%80%99-domestic-violence-victims-during-covid-19-pandemic>
<https://www.devex.com/news/opinion-tackling-the-rise-of-violence-against-women-during-covid-19-97508>
<https://www.who.int/>
<https://www.unescwa.org/sites/www.unescwa.org/files/es-cwa-covid-19-economic-cost-arab-region-en.pdf>
<https://www.instagram.com/wokedoctors/?hl=en>
<https://www.bbc.com/news/world-52063755>