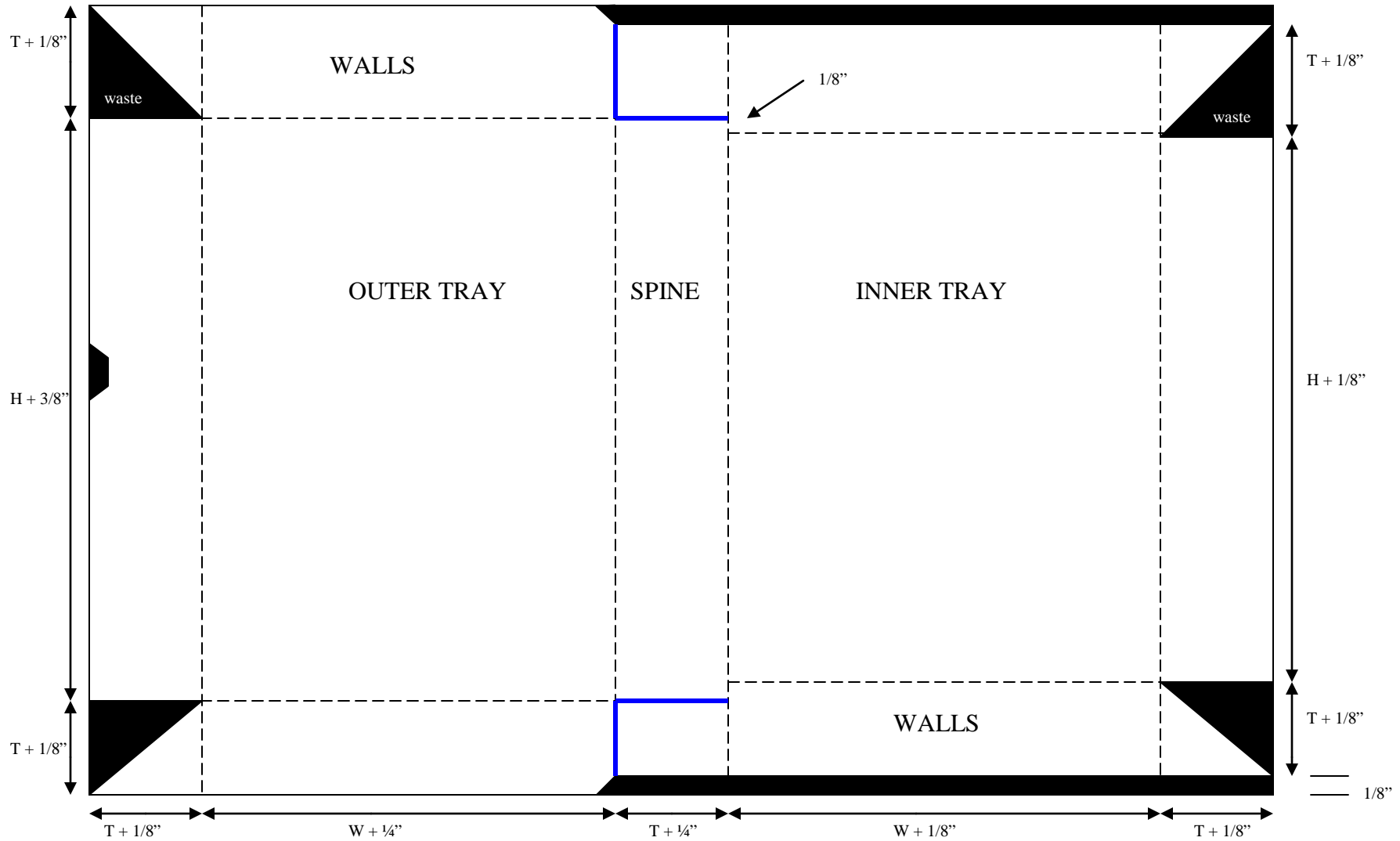


Syracuse University Library
 Department of Preservation and Conservation Manuals

Corrugated Board Clamshell Box

----- = Crease & Fold
 ————— = Cut



Syracuse University Library

Department of Preservation and Conservation Manuals

Mark-out vertical crease lines starting at bottom left corner of large sheet of corrugated board then measure and mark-out horizontal crease lines according to diagram.

Cut away waste and make cuts for fold-in flaps of inner tray.

Split open triangular corner flaps and remove corrugate leaving just the paper skin of both sides of board, glue flaps back together with PVA.

Crease & Fold

Glue flaps around outside of the inner tray walls first then close outer tray over inner tray & glue flaps to outside walls.