

BEADS: Journal of the Society of Bead Researchers

Volume 4 (1992)

Article 2

1-1-1992

Front Matter

Follow this and additional works at: <https://surface.syr.edu/beads>



Part of the [Archaeological Anthropology Commons](#), [History of Art, Architecture, and Archaeology Commons](#), [Science and Technology Studies Commons](#), and the [Social and Cultural Anthropology Commons](#)

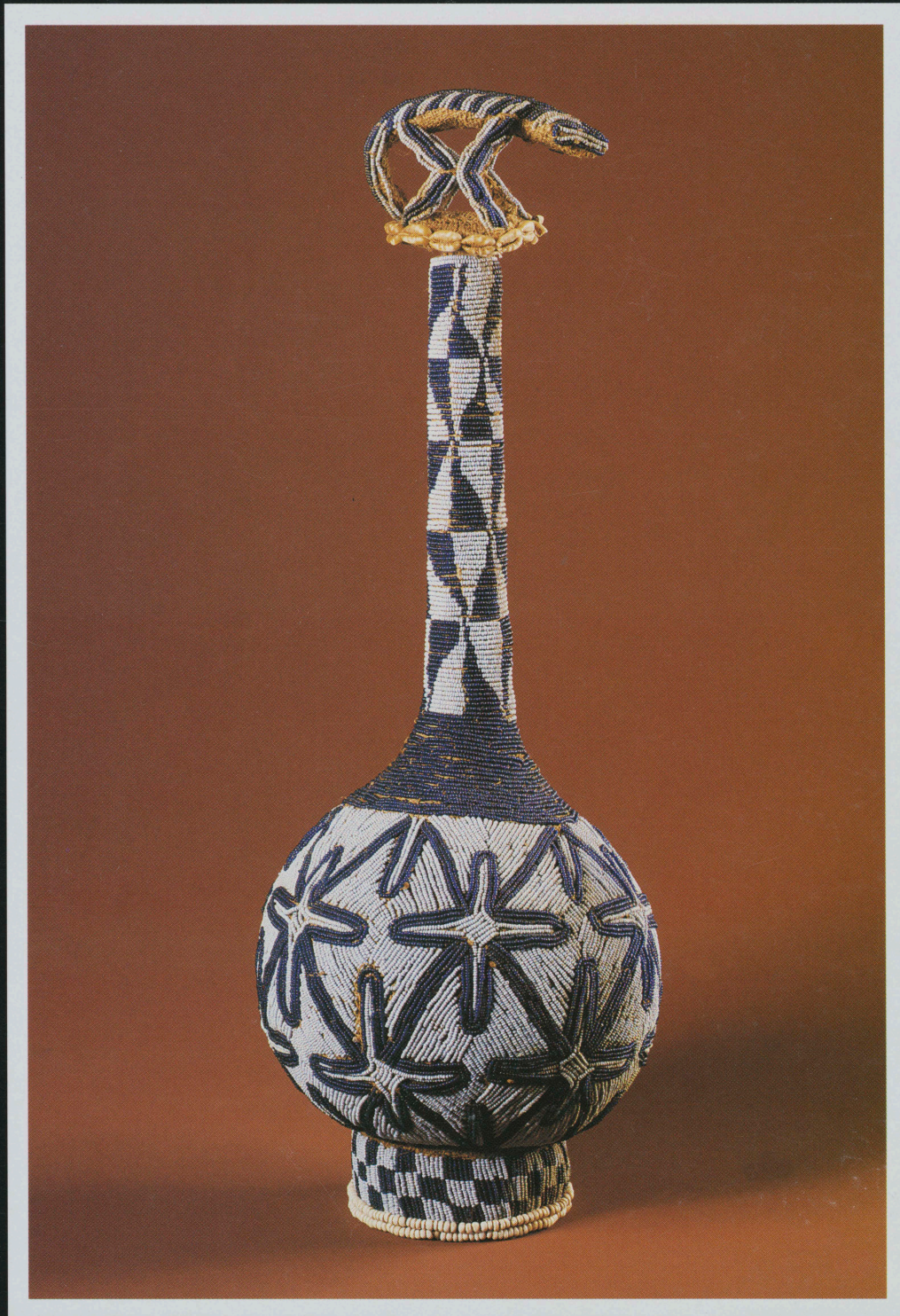
Repository Citation

(1992). "Front Matter." *BEADS: Journal of the Society of Bead Researchers* 4. Available at: <https://surface.syr.edu/beads/vol4/iss1/2>

This Front Matter is brought to you for free and open access by SURFACE at Syracuse University. It has been accepted for inclusion in *BEADS: Journal of the Society of Bead Researchers* by an authorized editor of SURFACE at Syracuse University. For more information, please contact surface@syr.edu.

BEADS

Journal of the Society of
Bead Researchers



1992 Vol. 4

Beaded Calabash (Cameroon)

THE SOCIETY OF BEAD RESEARCHERS

Officers for 1992

Jamey D. Allen
Lester A. Ross
Karlís Karklins

President
Secretary/Treasurer
Editor

Editorial Advisory Committee:

Roderick Sprague, chair
Lester A. Ross
Marvin T. Smith

Publications Committee:

Mary Elizabeth Good, chair
Karlís Karklins
Lyle M. Stone

BEADS (ISSN: 0843-5499) is published annually by the Society of Bead Researchers, a non-profit, scientific-educational organization which aims to foster serious research on beads of all materials and periods, and to expedite the dissemination of the resultant knowledge. Subscription is by membership in the Society. Membership is open to all persons involved in the study of beads, as well as those interested in keeping abreast of current trends in bead research.

There are four levels of membership: Individual - \$15.00; Sustaining - \$35.00; Patron - \$75.00; and Benefactor - \$150.00 (U.S. funds). All levels receive the same publications and benefits. The Sustaining, Patron and Benefactor categories are simply intended to allow persons who are in a position to donate larger amounts to the Society to do so. Members receive the annual journal, *Beads*, as well as the biannual newsletter, *The Bead Forum*.

General inquiries, membership dues, address changes and orders for additional copies of this journal (available for \$14.50 postpaid in North America or \$16.50 overseas) should be sent to:

Lester A. Ross, SBR Secretary/Treasurer
P.O. Box 7304
Eugene, OR 97401
U.S.A.

Books for review and manuscripts intended for the journal, as well as items for the newsletter (such as brief articles, announcements of recent publications, requests for information, and summaries of current research) should be addressed to:

Karlís Karklins, SBR Editor
Parks Canada
1600 Liverpool Court
Ottawa, Ontario K1A 0H3
Canada
(613) 990-4814

Information for authors is provided on p. 2.

©1993 Society of Bead Researchers
Printed in Canada
T & H Printers Ltd., Gloucester, Ontario

Production: Suzanne H. Rochette
Cover Layout: Rod Won

BEADS

1992 Vol. 4

Journal of the Society of
Bead Researchers

KARLIS KARKLINS, editor

CONTENTS

Information for Authors	2
Color Plate Captions	3
The Beads of Cameroon PIERRE HARTER; translated by HOWARD OPPER	5
The Beads of Roman and Post-Medieval Antwerpen, Belgium KARLIS KARKLINS and TONY OOST	21
Beads in the Lives of the Peoples of Southern Togo, West Africa PASCALE NOURISSON; translated by PIERRE NADON	29
On the Date of the Copper Age in the United States A. MORLOT	39
Identifying Beads Used in the 19th-Century Central East Africa Trade KARLIS KARKLINS	49

BOOK REVIEWS

Moss and Scherer: <i>The New Beadwork</i> OLIVE R. JONES	61
Karklins: <i>Trade Ornament Usage Among the Native Peoples of Canada: A Source Book</i> OLGA KLIMKO	62
Camps-Fabrer: <i>Bijoux berbères d'Algérie</i> MARIE-JOSÉ OPPER	63
Kurinsky: <i>The Glassmakers: An Odyssey of the Jews, The First Three Thousand Years</i> PETER FRANCIS, JR.	65
Brill and Martin: <i>Scientific Research in Early Chinese Glass</i> RODERICK SPRAGUE	69

INFORMATION FOR AUTHORS

1. Papers submitted for publication must be typed double-spaced on 8-1/2 x 11 in. or 21.0 x 29.5 cm, white, non-erasable bond paper with 1 in. margins. Submissions should not exceed 40 pages including references cited. The hard copy should be accompanied by the text on a 3½ or 5¼ in. disk in Word Perfect 5.1 or ASCII file.
2. Citations and references should follow the style of *American Antiquity* 48(2):429-442 (April 1983).
3. All manuscripts must be prepared with the following internal organization and specifications:
 - a. First Page: 1) place title 2 in. below the top margin, typed in upper case letters; 2) center author's name(s) 5 spaces below title; 3) begin text 5 spaces below the author's line.
 - b. Abstract: an informative abstract of 150 words or less should comprise the first paragraph.
 - c. Acknowledgements: these are to be placed at the end of the article, before the references cited.
 - d. Author's Affiliation: place author's name, affiliation and address adjacent to the right margin immediately following the references cited.
 - e. Tables: each table must have a short title and be typed double-spaced on a separate page.
 - f. Figure Captions: list the captions for black and white illustration (Figures) sequentially on a separate page using Arabic numerals; color illustrations (Plates) should be listed separately using Roman numerals.
4. Number all pages consecutively from the title page through the references cited.
5. All headings should be situated 3 spaces below the preceding text and flush with the left margin.
 - a. Primary headings are to be capitalized.
 - b. Secondary headings are to be typed using upper and lower case letters.
 - c. Tertiary headings are to be the same as the secondary headings with the addition of an underline or italics.
6. Illustrations
 - a. All drawings and photographs should be of publishable quality, with black and white photographs having sharp contrast.
 - b. Black and white photographs should be submitted as glossy 5x7 or 8x10 in. prints.
 - c. Color illustrations will be considered if of sufficiently high quality to warrant the high cost of reproduction; they should be submitted in the form of 3-1/2x5 in. or 4x6 in. prints (for initial assessment), or 35mm slides.
 - d. Figure and plate numbers are to be pencilled lightly on the backs of drawings and photographs, and on the mounts of color slides and the sleeves of larger transparencies.
 - e. Photographs of objects, and maps, site plans, etc., must include a metric or metric/inch scale.
 - f. When several items are shown in a single frame, each object is to be designated by a lower case letter, and the caption should include references to these letters.
 - g. Illustrations obtained from museums or other institutions must be accompanied by a letter from the appropriate institution granting permission to publish and indicating that reproduction fees, if any, have been paid by the author.
7. Each manuscript will be reviewed by at least one member of the Editorial Advisory Committee. Articles of a specialized nature will also be reviewed by one or more persons who have expertise in the thematic content, cultural or geographical region, or time period dealt with in the manuscript.
8. If review remarks are such that substantial changes are required before a manuscript is acceptable for publication, the revised paper will be re-reviewed by the original reviewer prior to its final acceptance.
9. Manuscripts will be judged on the accuracy of their content, appropriateness for an international audience, usefulness to other researchers, and consistency with the research and ethical goals of the Society.
10. Each author or set of co-authors will receive 6 complimentary copies of the journal. Book reviewers will receive one copy. Reprints, in multiples of 25, will be available prepaid to authors if there is sufficient interest. An order form will be sent out when the journal goes to press. Reprints will consist of the appropriate journal pages, complete with color plates, if any, stapled together at the upper left corner.