

# BEADS: Journal of the Society of Bead Researchers

---

Volume 3 (1991)

Article 8

---

1-1-1991

## Captions and Color Plates (v.3, 1991)

Follow this and additional works at: <https://surface.syr.edu/beads>



Part of the [Archaeological Anthropology Commons](#), [History of Art, Architecture, and Archaeology Commons](#), [Science and Technology Studies Commons](#), and the [Social and Cultural Anthropology Commons](#)

---

### Repository Citation

(1991). "Captions and Color Plates (v.3, 1991)." *BEADS: Journal of the Society of Bead Researchers* 3. Available at: <https://surface.syr.edu/beads/vol3/iss1/8>

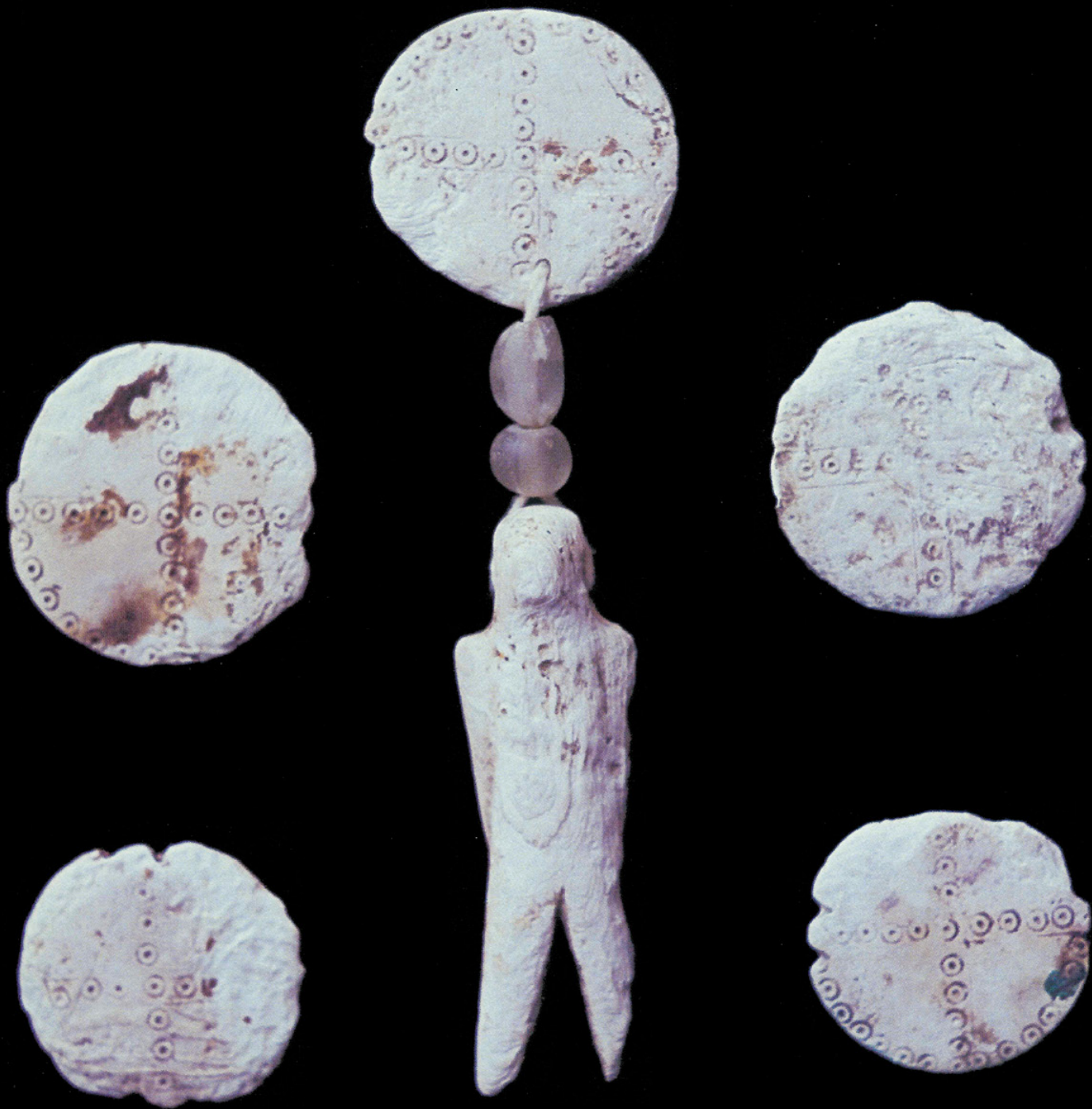
This Image is brought to you for free and open access by SURFACE at Syracuse University. It has been accepted for inclusion in BEADS: Journal of the Society of Bead Researchers by an authorized editor of SURFACE at Syracuse University. For more information, please contact [surface@syr.edu](mailto:surface@syr.edu).

## COLOR PLATE CAPTIONS

- Cover. *Mohawk Bead Sequence*: Shell "Birdman" and runtees from the Galligan #2 site. Collection of the Fort Plain Museum, Fort Plain, New York (this and the next four photos by D. Rumrill).
- Pl. IA. *Mohawk Bead Sequence*: The 1560-1615 Period. **R.1**: 1, tubular brass; 2, shell wampum; 3, shell discoidal; 4, IIa15; 5, IVa13; 6, IIa7. **R.2**: 1, IIa40; 2, IIa\* "barrel" bead; 3, IIa6; 4, IVk3; 5, IIB56. **R.3**: 1, IIB18; 2, IVa8; 3, IIB10; 4, IIBb1; 5, white-glass button.
- Pl. IB. *Mohawk Bead Sequence*: The 1615-1630 Period. **R.1**: 1, IVa\* red-on-green "barrel" bead; 2, IVb\* (blue with 6 white stripes); 3, IVa18; 4, IVb15; 5, IVa1; 6, Ia13; 7, IIa57; 8, IVb\* (redwood with 3 black stripes). **R.2**: 1, IIg4; 2, IVk\* 5-layer chevron; 3, IIa28; 4, IVb31; 5, IVg1. **R.3**: 1, IVn6; 2, IVb33; 3, IVbb\* (blue with red on white stripes); 4, IIBb7; 5, IVn2.
- Pl. IIA. *Mohawk Bead Sequence*: The 1630-1682 Period. **R.1**: 1, IVnn4; 2, IIa44; 3, Ibb1; 4, IIa1; 5, IIB56; 6, IVb36. **R.2**: 1, Ia20; 2, Ia1; 3, catlinite; 4, Ia4; 5, Ia19. **R.3**: 1, Ia1; 2, Ia2; 3, Ia5; 4, Ia7; 5, IIa2; 6, Ib3; 7, Ib4; 8, Ib10; 9, Ib12. **R.4**: 1, IIa1; 2, IIa3; 3, IIa2; 4, conch shell; 5, IVa1; 6, IVa5.
- Pl. IIB. *Mohawk Bead Sequence*: The 1682-1785 Period. **R.1**: 1, IIj2; 2, IIj1; 3, WIId\* (white doughnut-shaped); 4, WIE\* (lt. gold truncated cone); 5, IIa27; 6, IIg1; 7, IIa6; 8, WIId\* (black doughnut-shaped). **R.2**: 1, WIIC7; 2, WIIC5; 3, IIa\* (assorted "seed" beads); 4, IIB'2; 5, WIIC11; 6, WIIC2. **R.3**: 1, catlinite beaver; 2, red slate spacer; 3, catlinite disc with glass beads; 4, catlinite turtle; 5, catlinite heron.
- Pl. IIIA. *French Beadmaking*: Glass beads by Josette Gripoix, late 1940s to 1970 (all photographs by Marie-José and Howard Opper).
- Pl. IIIB. *French Beadmaking*: Glass imitation turquoise beads by Rousselet, 1930s.
- Pl. IIIC. *French Beadmaking*: Glass beads by Rousselet, 1930s.
- Pl. IIID. *French Beadmaking*: Galalith and bakelite beads by Rousselet, 1930s.
- Pl. IVA. *French Beadmaking*: *Gorge de Pigeon*, imitation granite, and gold-ruby glass beads by Gérard Alexanian, 1991.
- Pl. IVB. *French Beadmaking*: Various glass beads by Gérard Alexanian, 1980s and early 1990s.
- Pl. IVC. *French Beadmaking*: Glass flower beads by Mme. Duvelle, 1930s.
- Pl. IVD. *French Beadmaking*: Glass beads by Lukes et fils, 1992.
- Pl. VA. *Oudepost I*: Drawn glass, bone and metal beads. **R.1**: 1, Ia16; 2-3, IIa1; 4, IIa2, 5, IIa6; 6-7, IIa\* - bright olive green. **R.2**: 1, IIa\* - bright blue; 2-3, IIa56; 4, IIB\*; 5-6, III\*\*; 7, IVa\*. **R.3**: 1-2, IVa5; 3-4, IVa6; 5-6, bone beads; 7, lead bead. **R.4**: 1-2, short cylinder copper beads; 3, long cylinder copper bead; 4-7, short barrel copper bead (this and the next photo by R. Chan and K. Karklins).
- Pl. VB. *Oudepost I*: Wound glass beads. **R.1**: 1-2, WIb4; 3, WIb7; 4, WIIB\*; 5-6, WIIC1. **R.2**: 1-2, WIIC2; 3-4, WIIC3; 5-6, WIIC5. **R.3**: 1, WIIC\*; 2, WIIC11; 3-5, WIID1. **R.4**: 1-2, WIID6; 3, WIIE2; 4, WIIP\*.
- Back Cover. *French Beadmaking*: Various 20th-century French beads (photo by H. Opper).

# BEADS

Journal of the Society of  
Bead Researchers



1991 Vol. 3

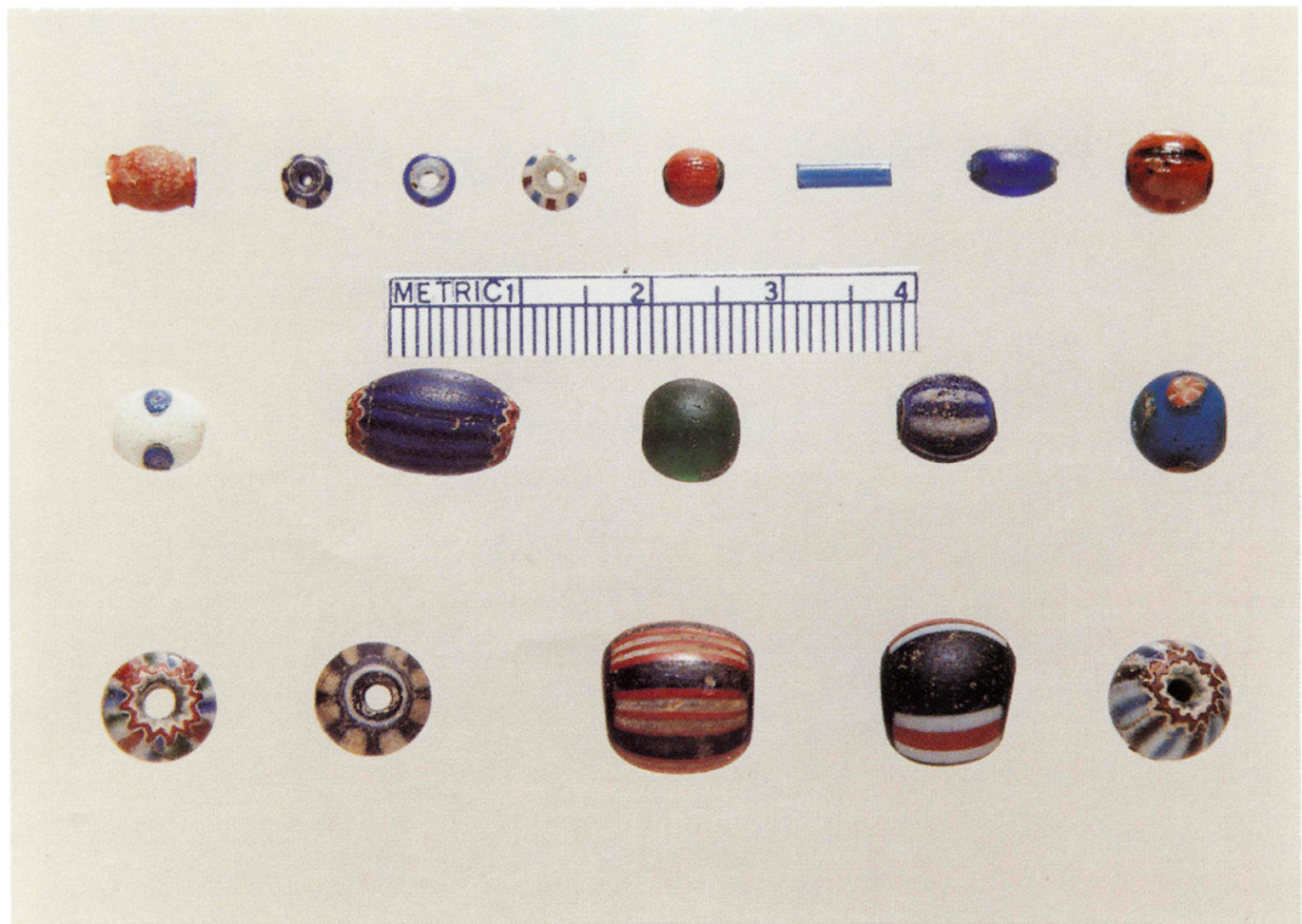
*Mohawk "Birdman" Figurine*

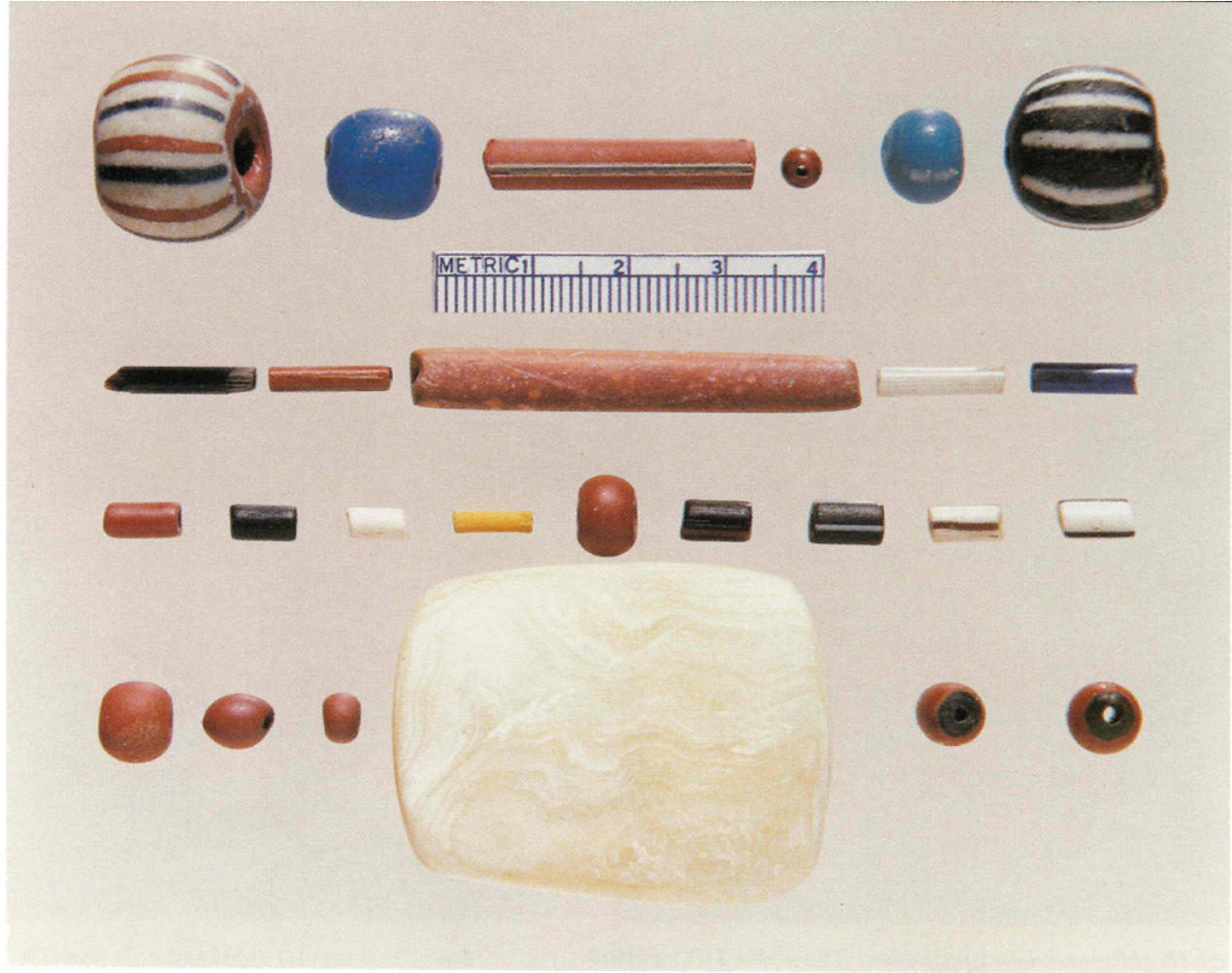


**Plate IA.** *Mohawk bead sequence:* The 1560-1615 period.

(See page 3 for full captions)

**Plate IB.** *Mohawk bead sequence:* The 1615-1630 period.

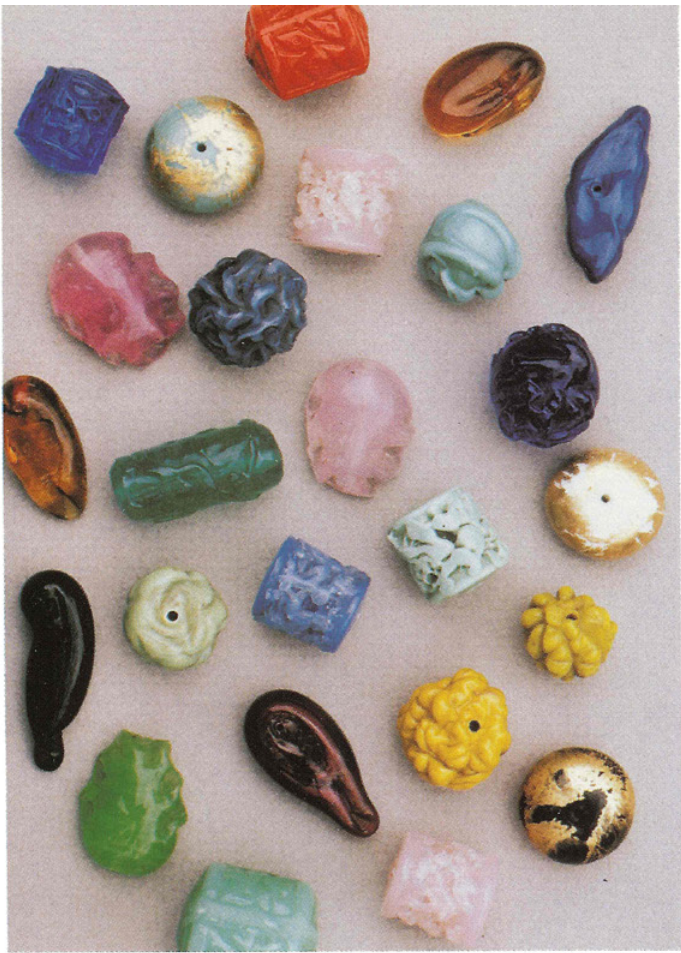




**Plate IIA.** *Mohawk bead sequence:* The 1630-1682 period.

**Plate IIB.** *Mohawk bead sequence:* The 1682-1785 period.





**Plate IIIA.** *French Beadmaking:* Glass beads by Josette Gripoix, late 1940s to 1970.

**Plate IIIC.** *French Beadmaking:* Glass beads by Rousselet, 1930s.



**Plate IIIB.** *French Beadmaking:* Glass imitation turquoise beads by Rousselet, 1930s.

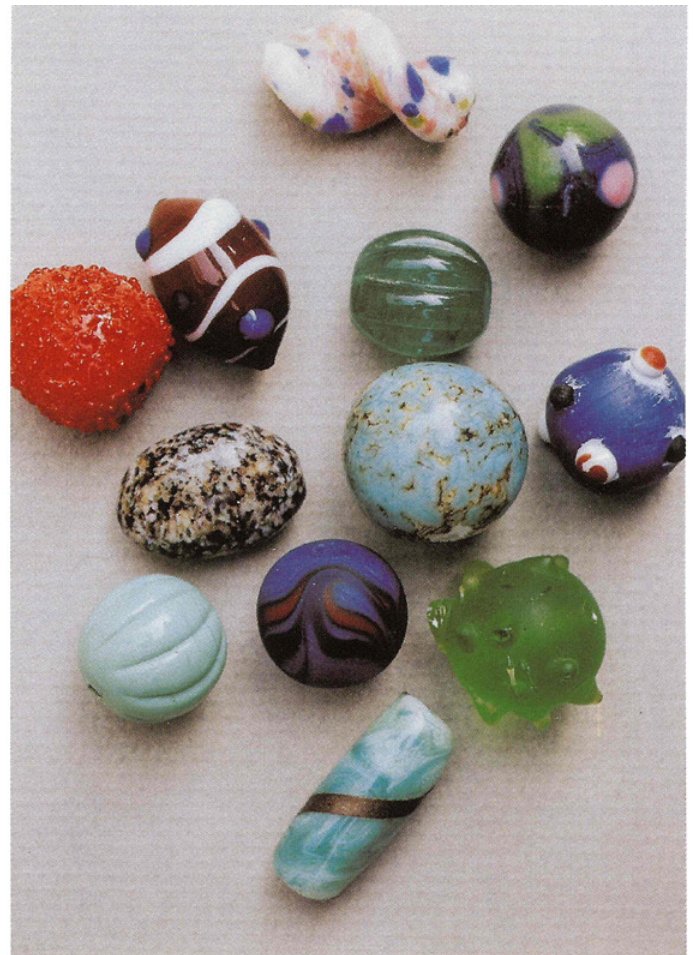
**Plate IIID.** *French Beadmaking:* Galalith and bakelite beads by Rousselet, 1930s.





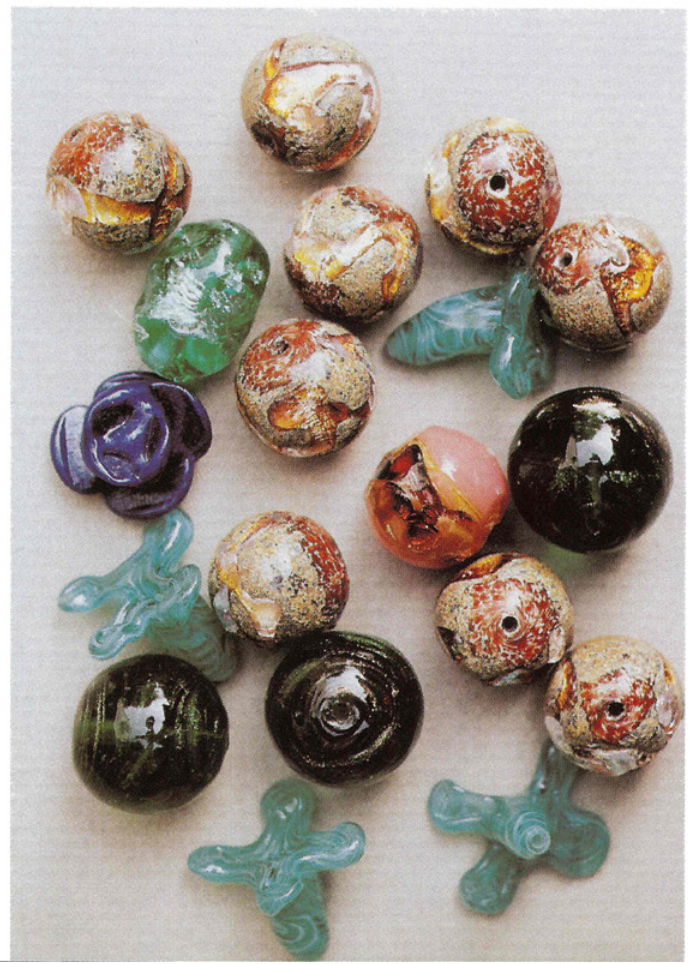
**Plate IVA.** *French Beadmaking: Gorge de Pigeon* and other glass beads by Gérard Alexanian, 1991.

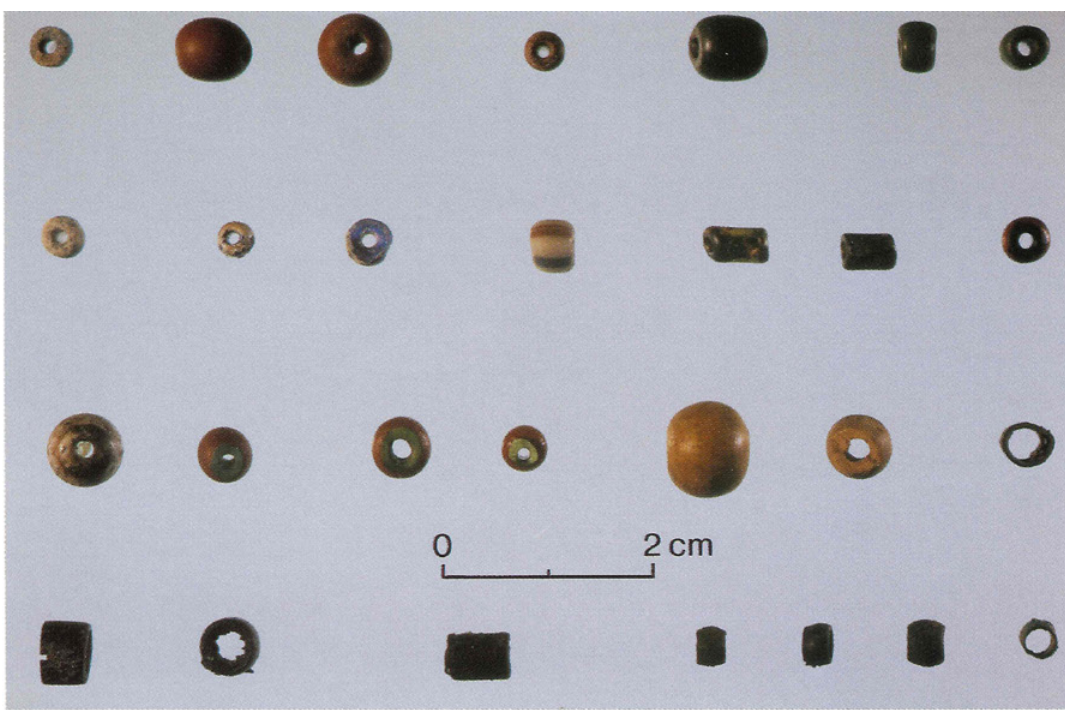
**Plate IVC.** *French Beadmaking: Glass flower beads* by Mme. Duvelle, 1930s.



**Plate IVB.** *French Beadmaking: Various glass beads* by Gérard Alexanian, 1980s and early 1990s.

**Plate IVD.** *French Beadmaking: Glass beads* by Lukes et fils, 1992.





**Plate VA.** *Oudepost I*: Drawn glass, bone and metal beads.

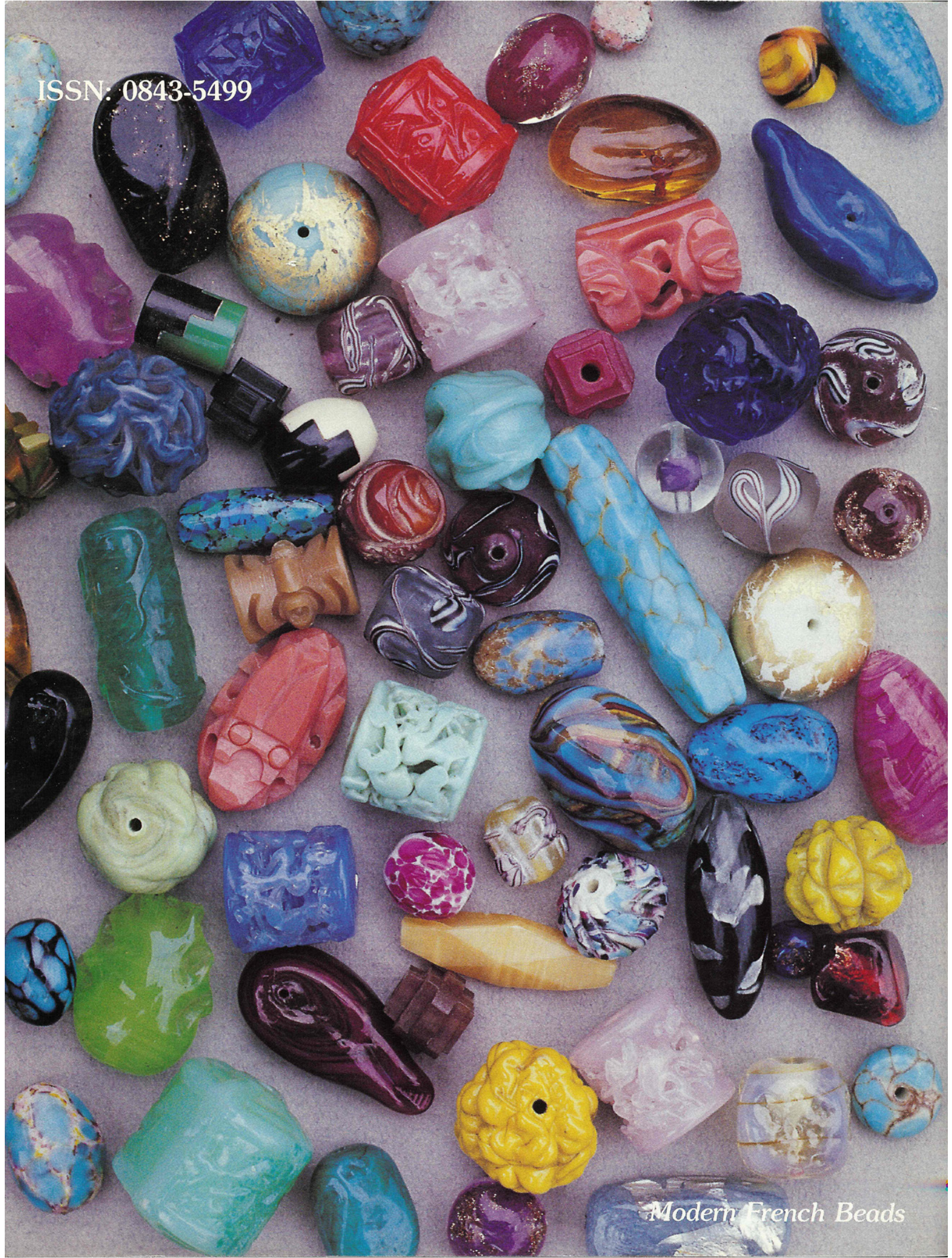
(See page 3 for full captions)

**Plate VB.** *Oudepost I*: Wound glass beads.





ISSN: 0843-5499



*Modern French Beads*