

Syracuse University

**SURFACE**

---

Architecture Senior Theses

School of Architecture Dissertations and  
Theses

---

Spring 2011

## A Didactic Architecture: Rural Early Education

Vasiliy Lakoba  
*Syracuse University*

Follow this and additional works at: [https://surface.syr.edu/architecture\\_theses](https://surface.syr.edu/architecture_theses)



Part of the [Architecture Commons](#)

---

### Recommended Citation

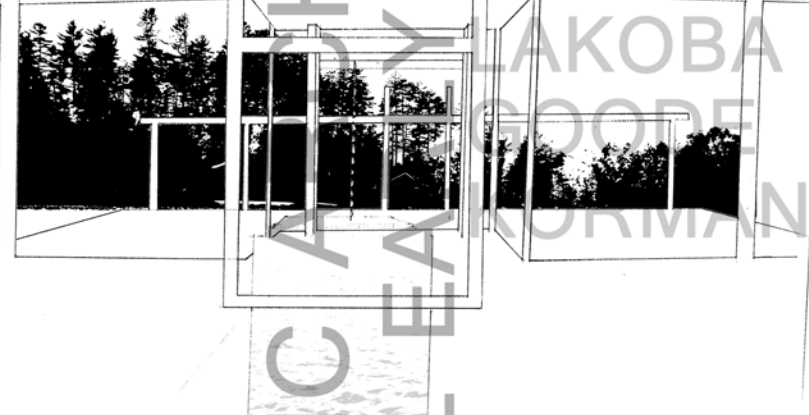
Lakoba, Vasiliy, "A Didactic Architecture: Rural Early Education" (2011). *Architecture Senior Theses*. 20.  
[https://surface.syr.edu/architecture\\_theses/20](https://surface.syr.edu/architecture_theses/20)

This Thesis, Senior is brought to you for free and open access by the School of Architecture Dissertations and Theses at SURFACE. It has been accepted for inclusion in Architecture Senior Theses by an authorized administrator of SURFACE. For more information, please contact [surface@syr.edu](mailto:surface@syr.edu).

4-1-2011

# A Didactic Architecture: Rural Early Education

Vasiliy Lakoba



A DIDACTIC ARCHITECTURE  
FOR RURAL EARLY EDUCATION

LAKOBA  
GOODE  
NORMAN

## **ACKNOWLEDGEMENTS**

**Terrance Goode, primary advisor**

**Randall Korman, secondary advisor**

**Jean-Francois Bedard, reviewer**

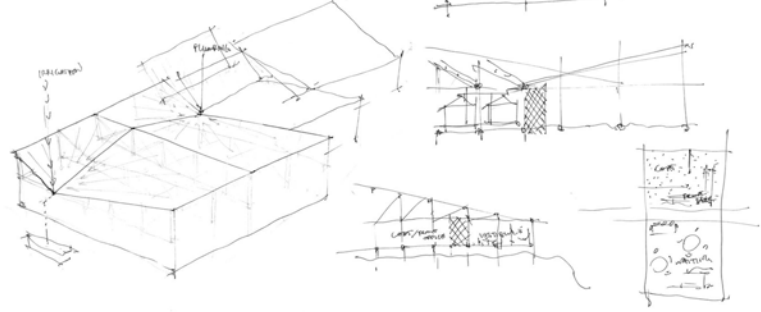
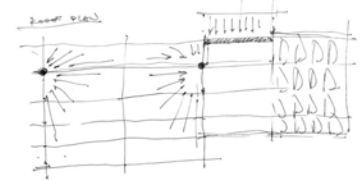
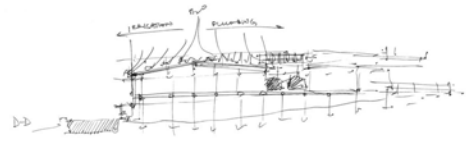
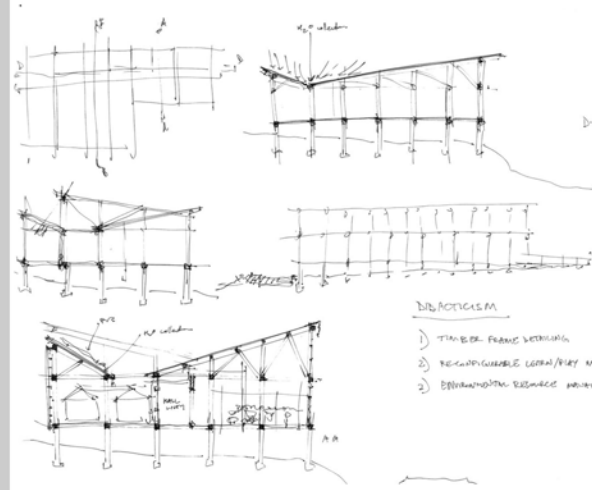
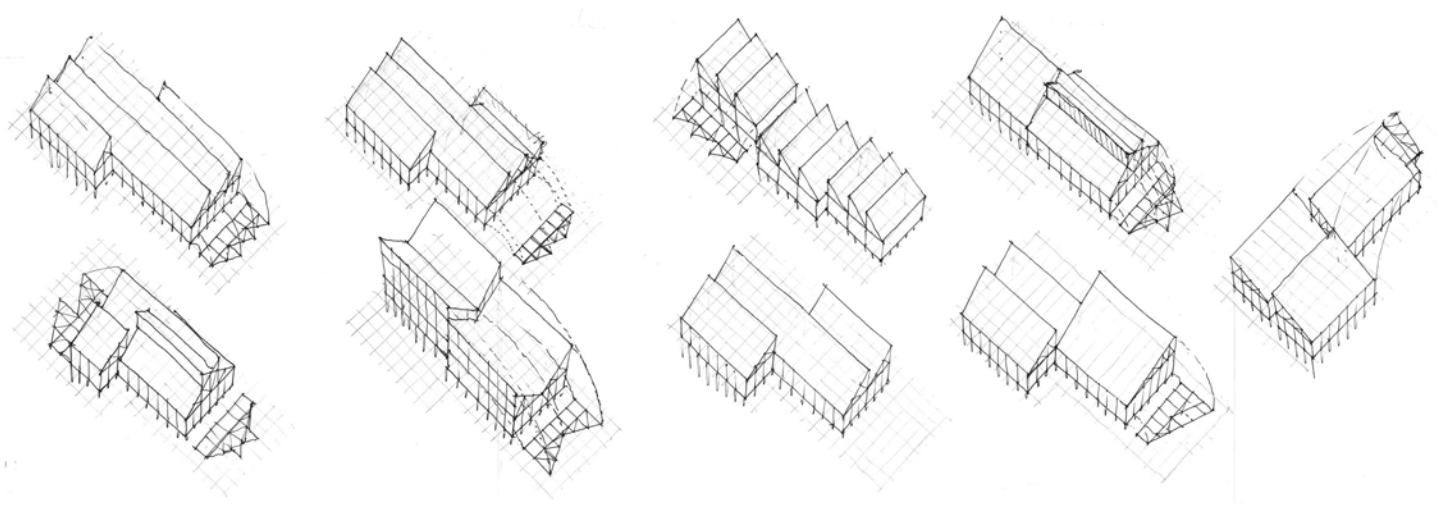
**Timothy Stenson, reviewer**

**Paul Crovella, instructor**

**Simon Taveras, wood shop monitor**

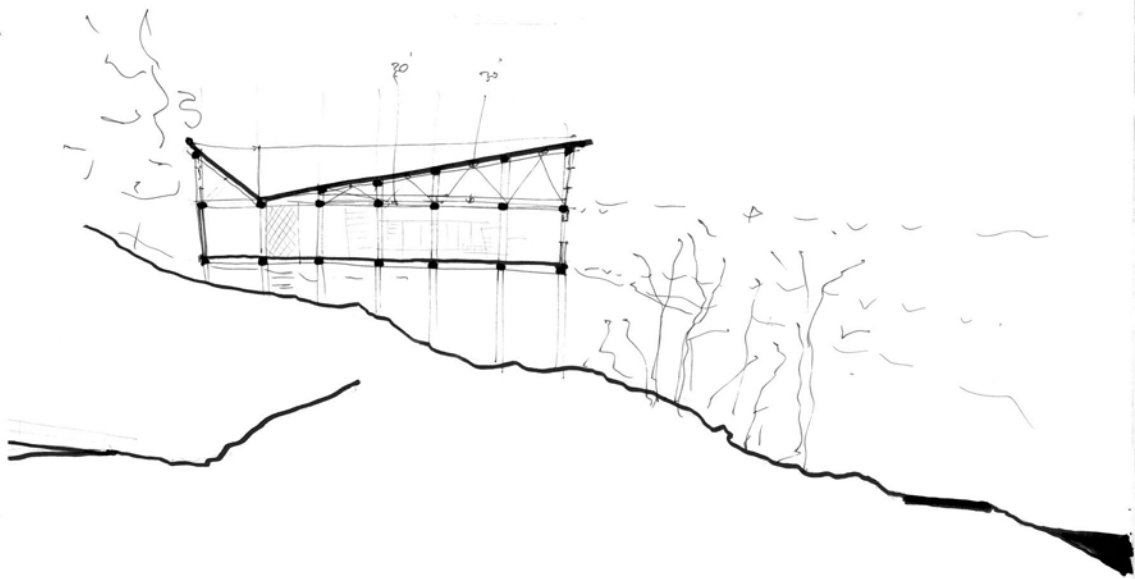
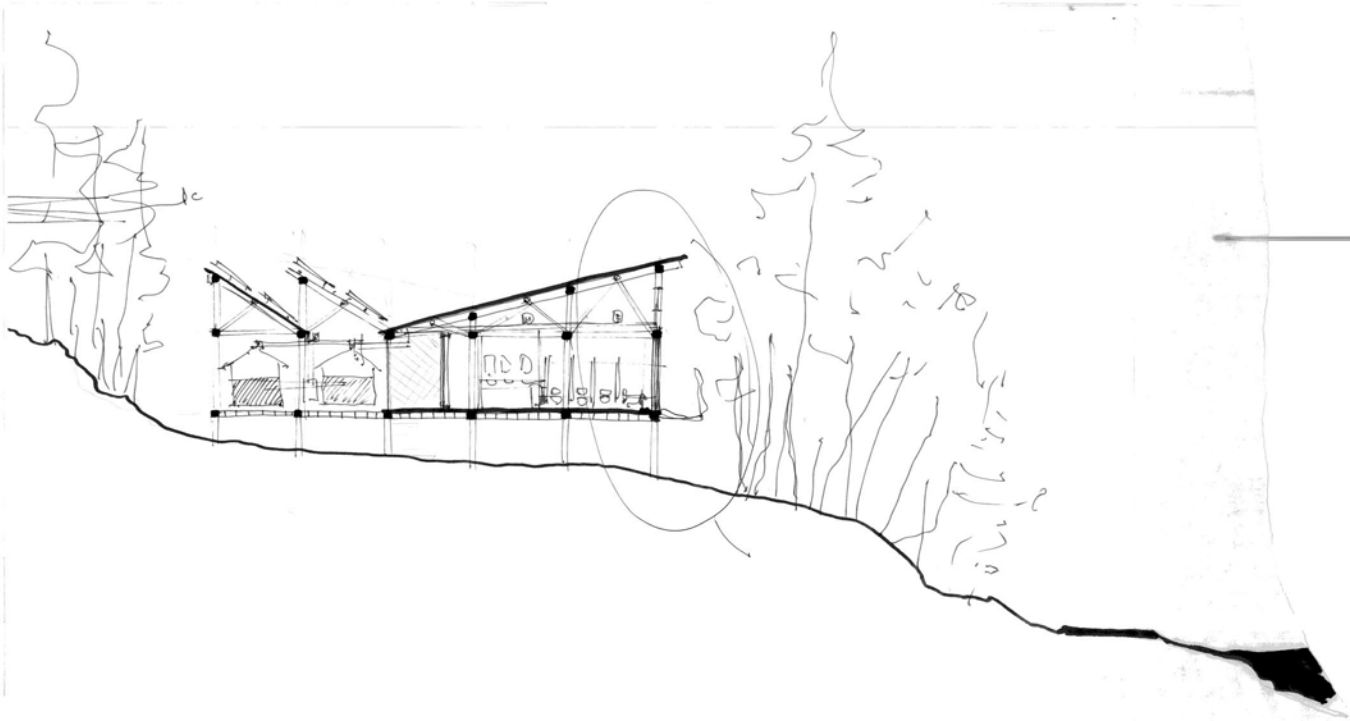
**Eric Holzwarth, honors advisor**





BIBLIOTECISM

- 1) TIMBER FRAME STRUCTURE
- 2) RECONFIGURABLE LOAN/KEY MODULES
- 3) BIRKENHEAD RESERVE PROJECT REFLECT.

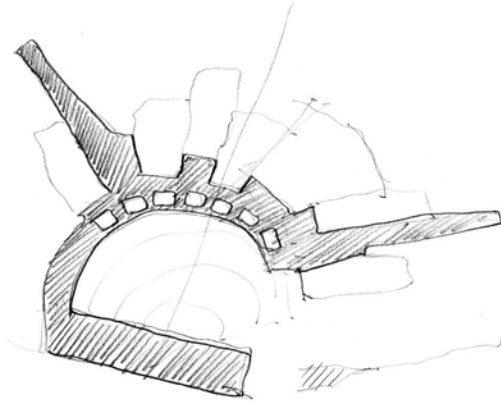




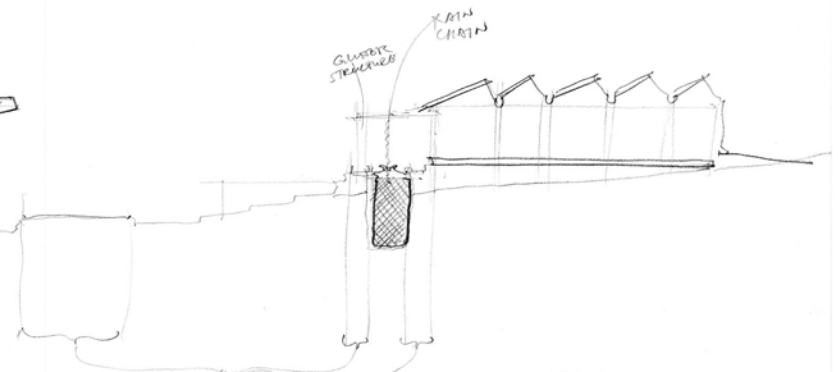




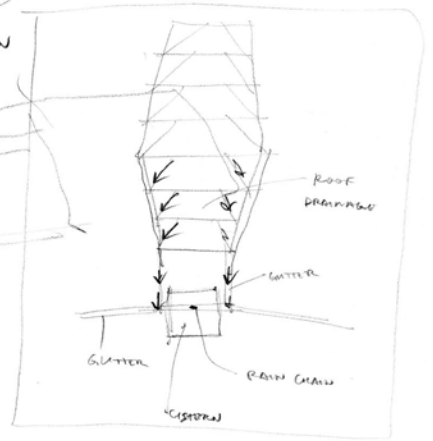
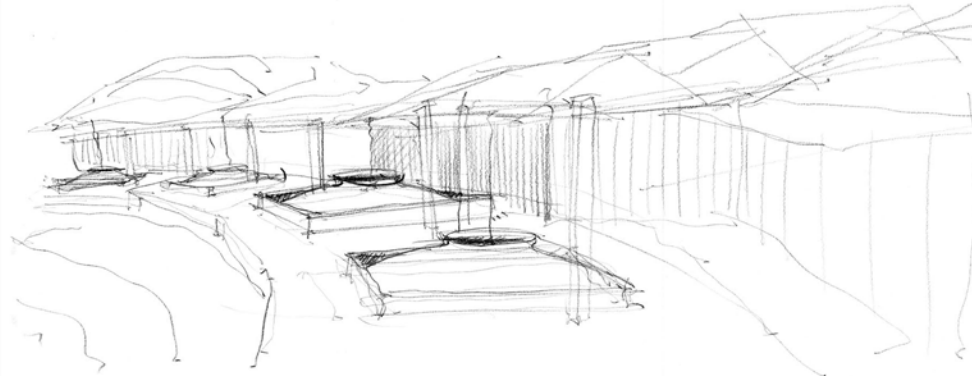
CISTERNS



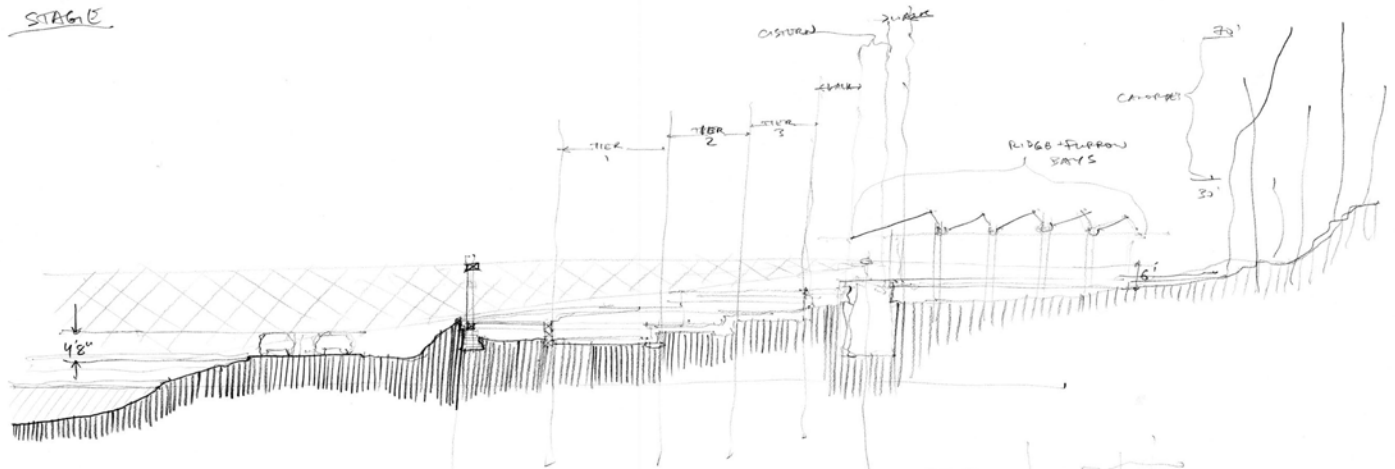
- DECENTRALIZED
- WATER PERSED ON CIRCULATION



REMAINING CIRCULATION

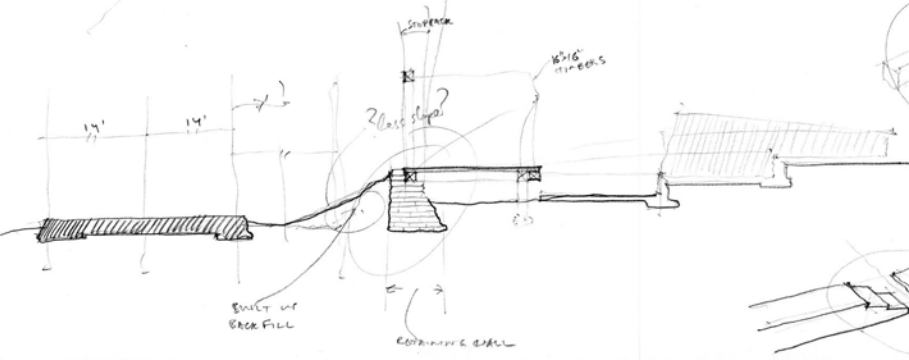
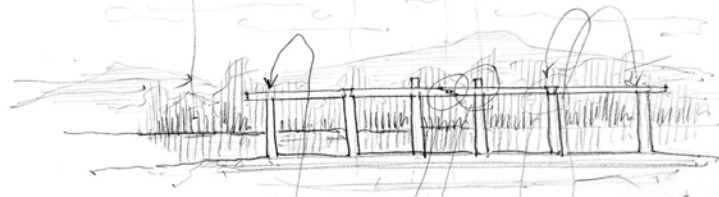


STAGE



more backfill!  
less wall!

160'



SHIRT OF BACK FILL

CONTAINING WALL

