

Syracuse University

**SURFACE**

---

Architecture Master Theses

School of Architecture Dissertations and  
Theses

---

May 2016

## Consulate, Cultural Center, and Housing Complex

Unknown

Follow this and additional works at: [https://surface.syr.edu/architecture\\_mtheses](https://surface.syr.edu/architecture_mtheses)



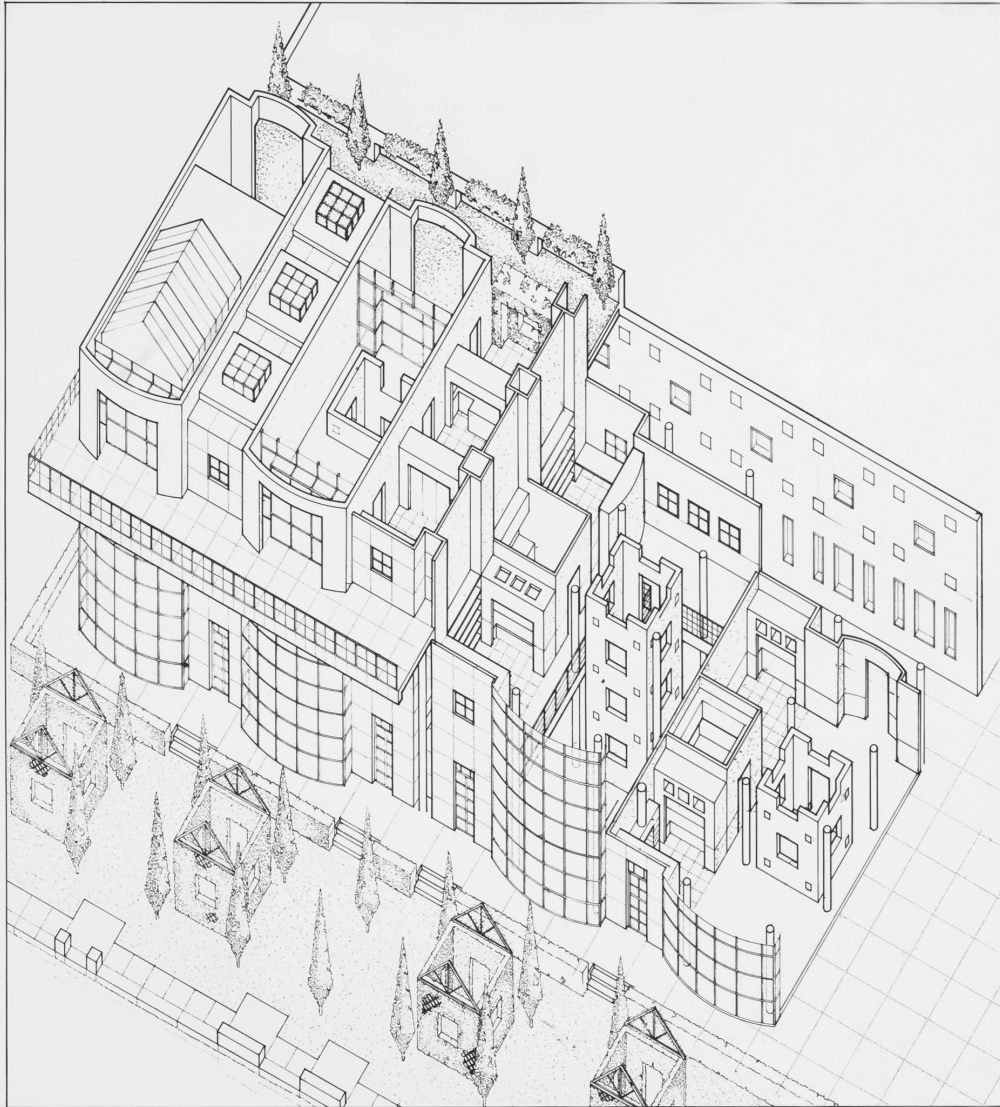
Part of the [Architecture Commons](#)

---

### Recommended Citation

Unknown, "Consulate, Cultural Center, and Housing Complex" (2016). *Architecture Master Theses*. 14. [https://surface.syr.edu/architecture\\_mtheses/14](https://surface.syr.edu/architecture_mtheses/14)

This Thesis is brought to you for free and open access by the School of Architecture Dissertations and Theses at SURFACE. It has been accepted for inclusion in Architecture Master Theses by an authorized administrator of SURFACE. For more information, please contact [surface@syr.edu](mailto:surface@syr.edu).

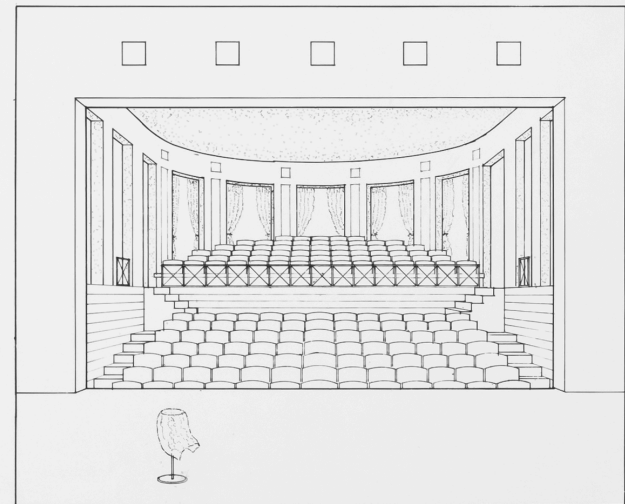


H O U S I N G



R E A D I N G T E R R A C E

C O N S U L A T E , C U L T U R A L C E N T E R  
&  
H O U S I N G C O M P L E X



A U D I T O R I U M