

Architecture News

THE NEWSLETTER OF THE SYRACUSE UNIVERSITY SCHOOL OF ARCHITECTURE



Professor Emeritus Kermit J. Lee Jr. is honored by alumni, faculty, and friends at a reception in New York

Kermit J. Lee Jr. Scholarship is Established

Scores of alumni have stories to tell about how Professor—now Emeritus—**Kermit J. Lee Jr.** (B. Arch. '57) mentored them when they were in school. One alumna recalls turning to Lee when she was convinced she couldn't finish her third-year project—that project turned out to be her best work at SU. Another alumna credits Lee for introducing him to his work of promoting architectural education in his community. Countless others recall how Professor Lee counselled them to work through times of crisis and to persevere through their years at SU.

To recognize his dedication and example, the School of Architecture has created the Kermit J. Lee Jr. Scholarship Fund. Kermit J. Lee Jr. Scholarships will help ensure that promising students who have financial need will not only be able to begin their studies, but will have the resources to complete their degrees and join the ranks of successful Syracuse alumni in the profession. The Kermit J. Lee Jr. Scholarship will serve a very special need for School of Architecture undergraduates. Like other scholarships, it will recognize academic achievement, leadership qualities, and professional promise. But this scholarship will be awarded for third and subsequent years of study to recognize that students often experience keen financial pressure on family and personal resources at this critical time.

On November 11, 1996, Dean Bruce Abbey announced the Kermit J. Lee Jr. Endowment Campaign publicly by hosting a gala event in New York City. Guests of honor were Kermit J. Lee Jr. and Lore L. Lee, along with four generations of the Lee family including their daughter

Karin and son Jason. Also present were Lillian Lee, Kermit Lee's mother; a brand new grandson, William Jackson George; and siblings Ronald Lee, Judy (Lee) Whitehead, and William Lee.

The more than 100 guests in attendance enjoyed an evening of reunion and celebration. Presentations were made by Dean Bruce Abbey and Thomas A.K. Queenan (B. Arch. '81) with responses by Professor Lee and his daughter Karin (Lee) George.

In addition to the Lee family and New York area alumni, guests included faculty emeriti Siegfried Snyder and William Scarbrough. Alumni travelled from as far away as California; R. Steven Lee, who practices in Los Angeles, attended with his family. Members of the planning committee in attendance were Thomas A.K. Queenan (B. Arch. '81); Karin (Lee) George; Richard Gluckman (M. Arch. '71); James Garrison (B. Arch. '79); and Katryn Hansen and Bruce Abbey, ex officio.

A native of Springfield, Massachusetts, Lee earned a Bachelor of Architecture, magna cum laude, at Syracuse University in 1957 and was selected as class marshal. At graduation he won every prize awarded by the school including the Henry Adams Prize and AIA Medal, the Alpha Rho Chi Medal, the Luther Gifford Prize in Design, and the New York Society of Architects Medal. He was awarded a Fulbright Fellowship at the Technische Hochschule in Braunschweig, Germany. Remaining in Germany, he joined the Air Force as a civilian architect, and during this time, he met and married Lore Leipelt, now his wife of 33 years.

see Lee Scholarship page 10

School News
Page 6

Campaign
Challenge
Page 10

Faculty News
Page 14

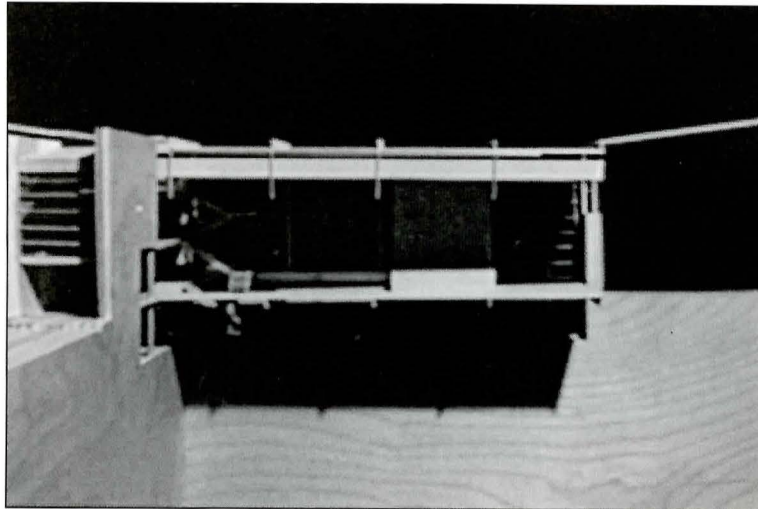
Alumni News
Page 16



Superjury student Karen Skillin

Superjury '96

The drawings on these pages are the winning entries from the James A. Britton Memorial Award for Best Thesis and Outstanding Thesis. See more about Superjury on page 8.



Market and Community Center, Buffalo, NY
Thesis project, William C. Truitt

A Message From the Dean

Alumni success is a genuine and true indicator of the quality and character of any school, and the current visibility of the alumni in professional journals, awards gained, and honors received is clear evidence that Syracuse alumni are making their mark in the professional world, and we take pride in your achievement. We also know that school is only the beginning of an architect's education. Future success is determined by the individual, yet the understanding of the design process must be inculcated with careful guidance and insight. This has always been a strength at Syracuse.

It is gratifying to see the support of the alumni for the school being manifested in so many ways. This past fall Bruce Fowle (B. Arch. '60) and Jim Garrison (B. Arch. '79) were visiting critics. Many of you are returning to recruit new graduates for your offices. The number of you who have joined us at alumni events is truly astonishing and your interest and curiosity in what is happening is indicative of a genuine interest and concern.

In this issue of *ArchitectureNews* we focus on the current campaign and the results so far of efforts to increase financial support for our students. I know you will enjoy reading about three new scholarships in this issue: The Kermit J. Lee Jr. Scholarship, the Louise Woodroffe Scholarship, and the Peter Moore Scholarship fund. While the future is always unknown, it is clear that a university education will continue to cost more, and we understand that there is a clear link between value and price. We have to be worth the investment and we need to support our students so that they can benefit from our education. Your support has been and will

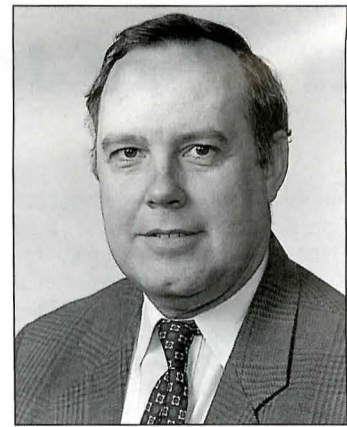
continue to be essential in that endeavor. Our promise is that being at Syracuse is and will continue to be worth the time, energy and financial sacrifice that many students and parents face today.

With help from the University we have continued to upgrade our facilities in Slocum Hall. The student lounge located in the "marble room" is a reality at last. The basement is still under renovation but a new snackbar opened this fall. Due to a generous gift we have purchased equipment for a publishing center, and the Center for Urban Research is underway. Faculty members have excelled with Julia Czerniak and Tim Swischuk placing second in the Governor's Island Competition. Former faculty Adam Drisin and James Saywell won first place in an urban design competition for Bucharest. A new honors course taught by Ted Ceraldi is monitoring the new Sports Health Science Facility being built by Charles Gwathmey. This will be a three-year endeavor that will document the entire construction process of the facility.

There is much more to tell than space to write. Please come up and visit. Meanwhile, we wish continued success to all in the new year.

Sincerely,

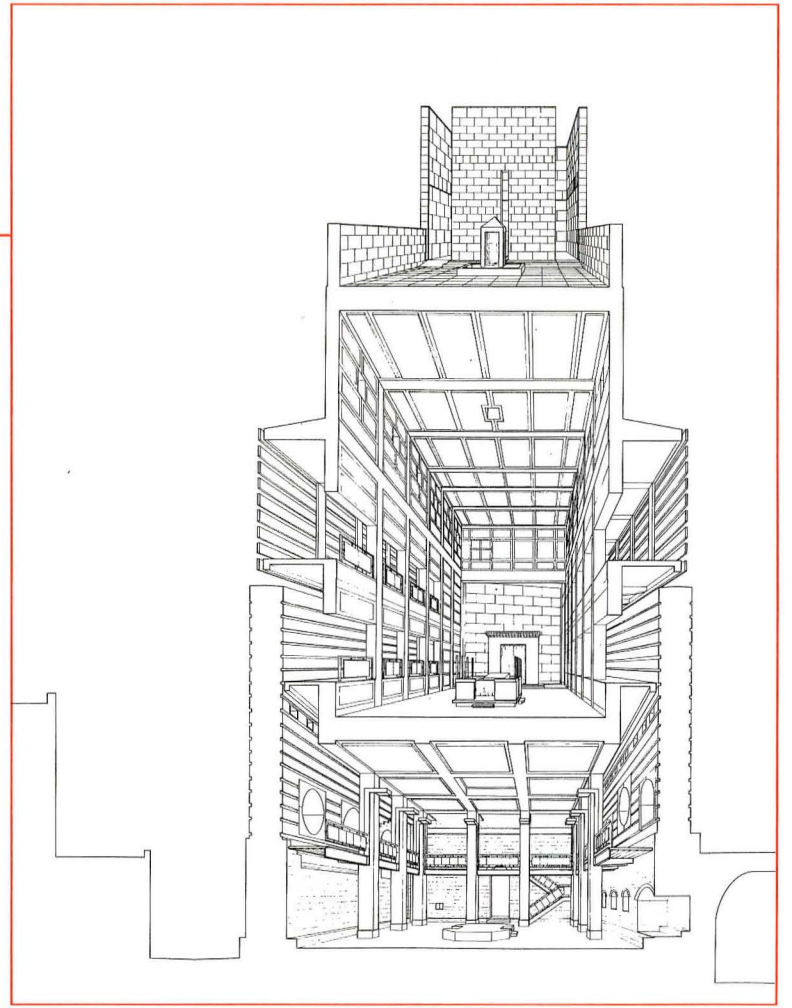
Bruce Abbey, Dean



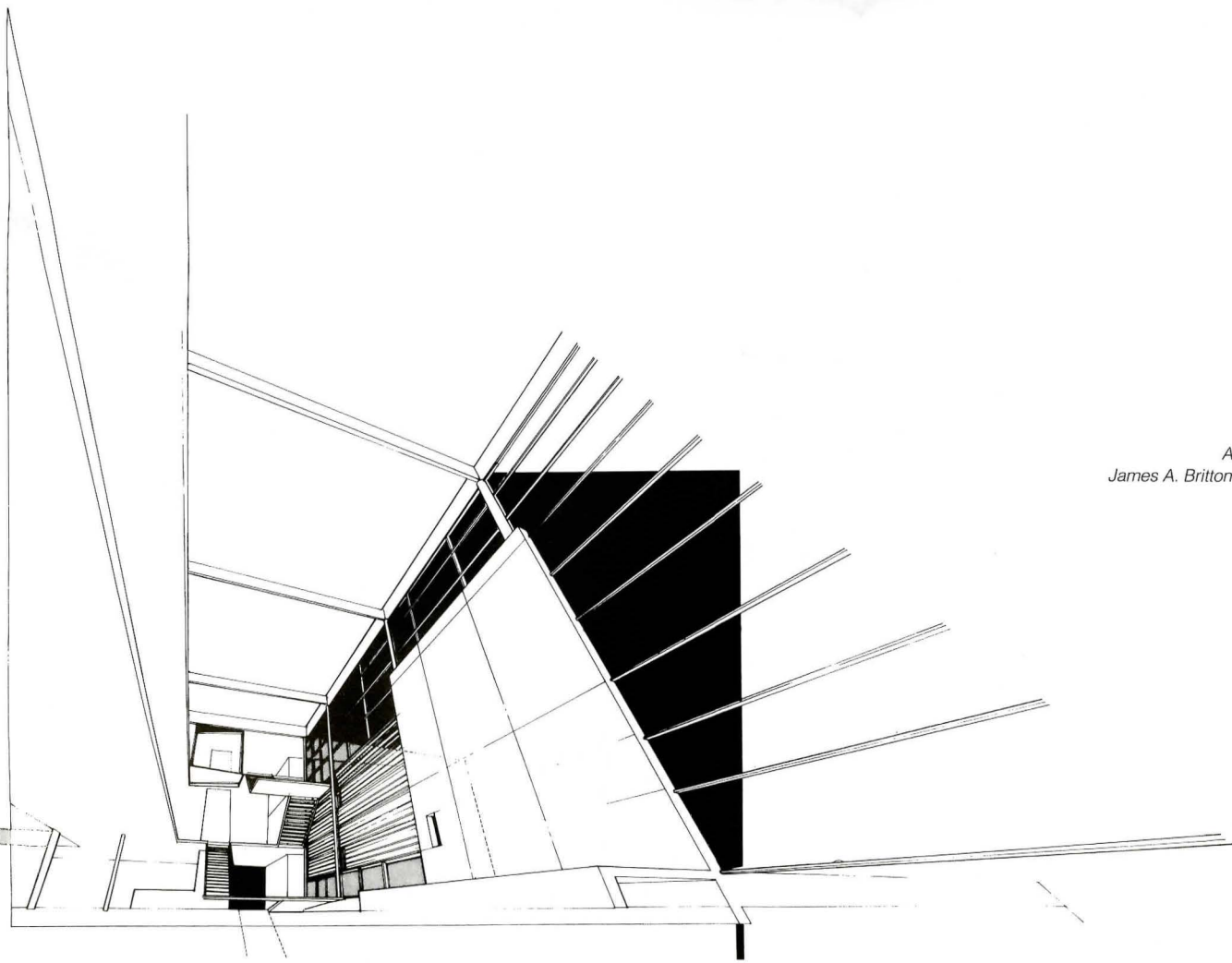
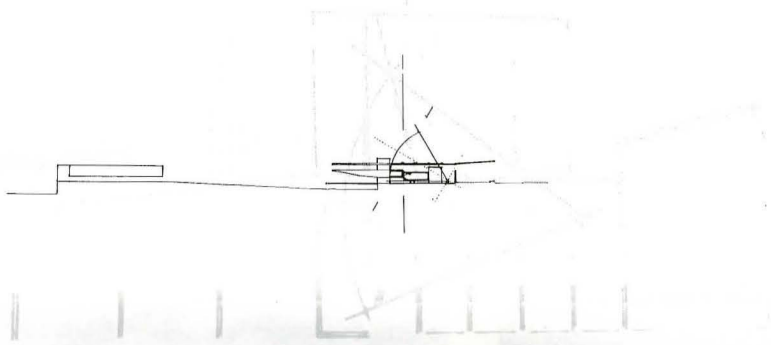
ArchitectureNews is published by the School of Architecture for alumni and friends of the school.

Bruce Abbey, Dean
Katrjn Hansen, Assistant Dean, Editor
Contributing Writers:
Michelle McGrath, Amy Shires

We welcome all comments, contributions, and inquiries, which should be addressed to:
Katrjn Hansen, Assistant Dean
School of Architecture
Syracuse University
103 Slocum Hall
Syracuse, NY 13244-1250

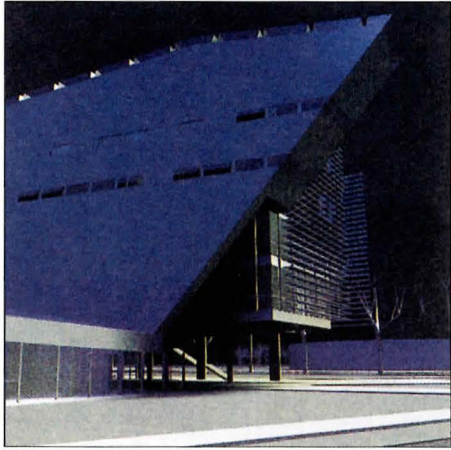


Christopher M. Pizzi
A Reposition of Solomon's Temple
James A. Britton Memorial Award for Best Thesis

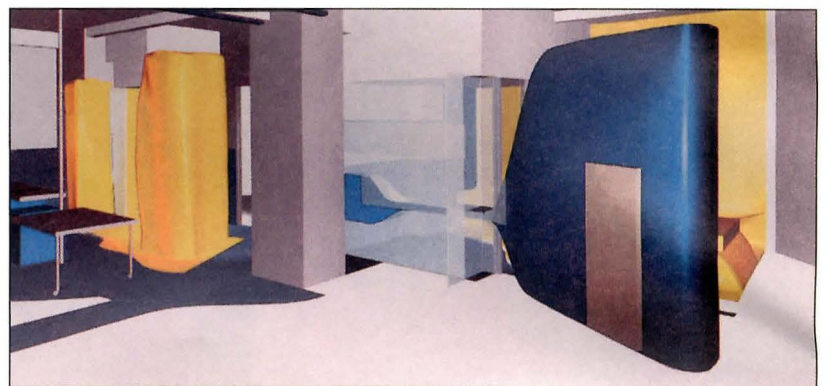
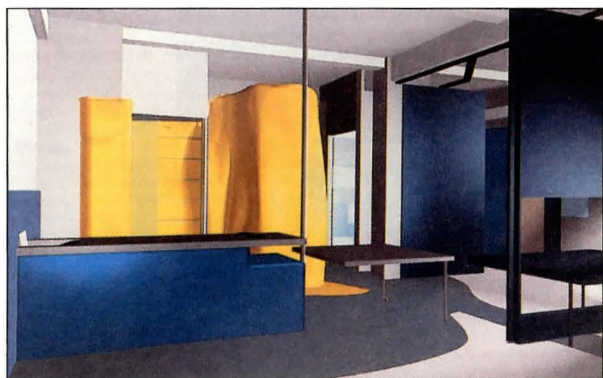
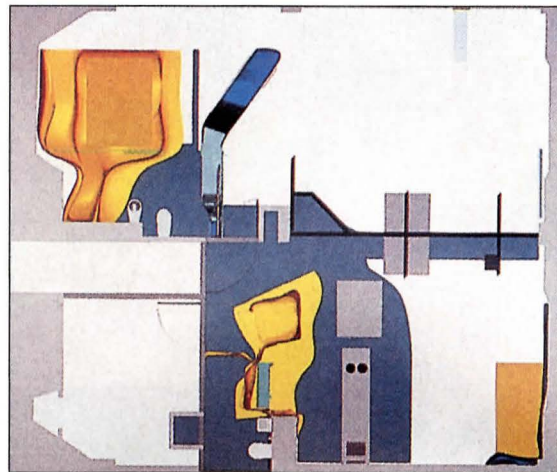


William C. Truitt
A Public Realm of The Contemporary City
James A. Britton Memorial Award for Outstanding Thesis

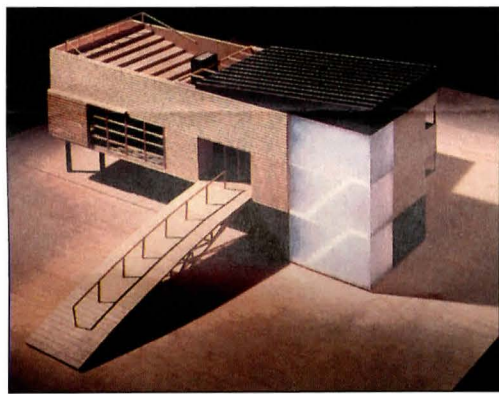
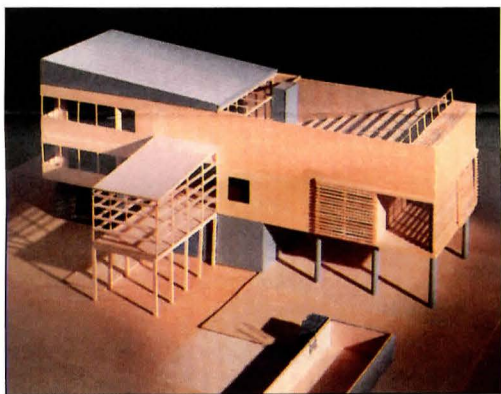




c



d



b

a
Nicholas Isaak

b
Richard Gluckman

c
John Enright

d
William MacDonald

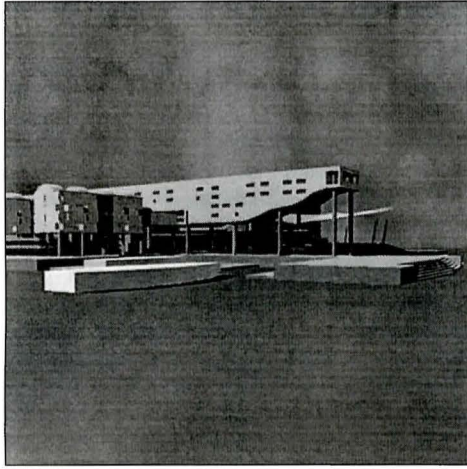
e
Craig Scott



e inset and plan



Syracuse Alumni Win Prestigious Awards



During the past year, several alumni of the School of Architecture have received major recognition by winning important national and international awards. **Nicholas Isaak** (B. Arch. '88) has won the \$30,000 1996 Rotch Travelling Scholarship for foreign travel, and **Mark Robbins** (M. Arch. II '82) was selected to receive a Rome Prize Fellowship to pursue independent research at the American Academy in Rome. Three graduates, **Richard Gluckman** (M. Arch. '71), **William MacDonald** (B. Arch. '79), and **John Enright** (B. Arch. '86), won *Architecture* magazine design awards, and **Craig Scott** (B. Arch. '86) won a 1996 *Progressive Architecture* Award citation.

Isaak was chosen from 40 entries in a two-stage national design competition open to architects under the age of 35 who have worked or studied in Massachusetts. The subject of the final 10-day charrette was a mixed use waterfront complex containing housing, retail, office, and light industrial space as well as a ferry terminal, performance area, and parking. Isaak plans an eight-month trip around the world to further his research on the design of cities. The Rotch scholarship was founded in 1883 for "the advancement of education in architecture;" past scholars include Henry Bacon, Louis Skidmore, Edward Stone, and Victor Lundy.

Robbins, who won a Rome Prize Fellowship, was chosen by jurors through an open competition that attracts more than 1,000 applicants annually. He is curator of architecture at the Wexner Center for the Arts of the Ohio State University. He will spend six months at the academy, which provides each winner with a stipend, housing, and a studio in which to pursue independent work. Robbins' projects have been exhibited in many galleries nationally and internationally. In March of 1996 he exhibited a commissioned installation reflecting the intersection of architectural form and gender identity at the Adelaide Festival in Australia. He has received awards from the National Endowment for the Arts, the New York Foundation for the Arts, the Graham Foundation, and the state arts councils of Ohio and New York.

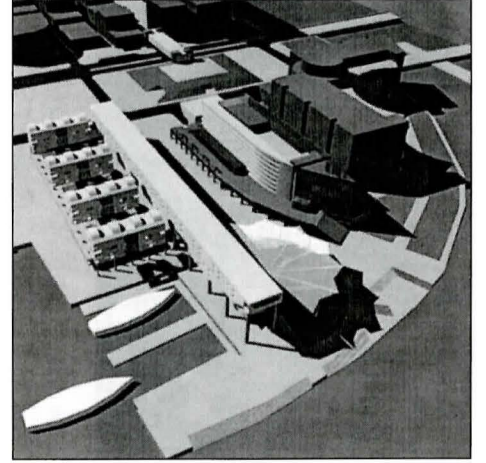
Richard Gluckman's award from *Architecture* magazine was a citation in this year's Architecture Design Awards Program for the matchbox house in Orient, New York. William MacDonald of Kolatan/MacDonald Studio won a citation for their project of the O/K apartments in New York. John Enright of Morphosis was the project architect of the Hypo Alpe-adria Center in Klagenfurt, Austria. The project won an award in the design awards program.

Craig Scott (B. Arch. '86) in partnership with Homa and Sima Fardjadi, received a 1996 *Progressive Architecture* Award citation for their competition-winning project for a prototypical Headstart Childcare Facility. The project was published in the May '96 issue of *Architecture* magazine and was included in an exhibition titled *Process and Produce: Inside the 43rd Annual P/A Awards* at 2AES Gallery in San Francisco last fall. In conjunction with the exhibit, Scott presented a lecture to the public in February. He is currently a visiting assistant professor at the University of Michigan, College of Architecture and Urban Planning.

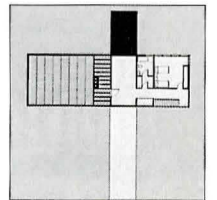
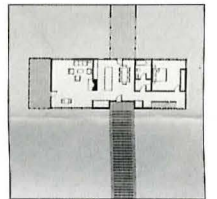
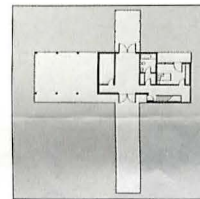
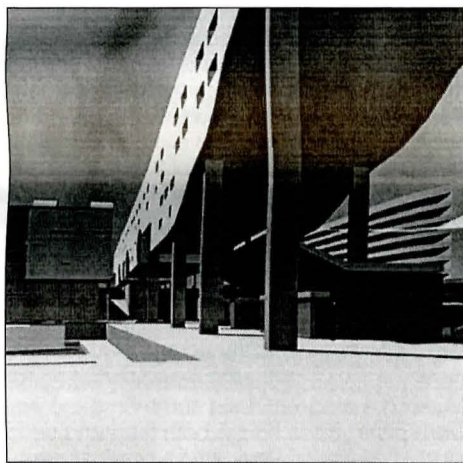
Paris Prize Winners

Thomas T. H. Pen (B. Arch. '94) has been awarded first prize in the 1996-97 Paris Prize Competition in Public Architecture by the Van Alen Institute. Selected among 229 entries, his winning solution was for a temporary structure on Wall Street in Manhattan designed to strengthen the character of the area and aid in its transformation into a 24-hour community. Michael J. Meredith (B. Arch. '94) was awarded an honorable mention.

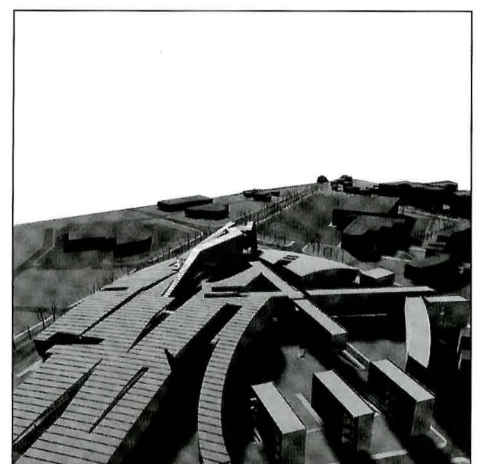
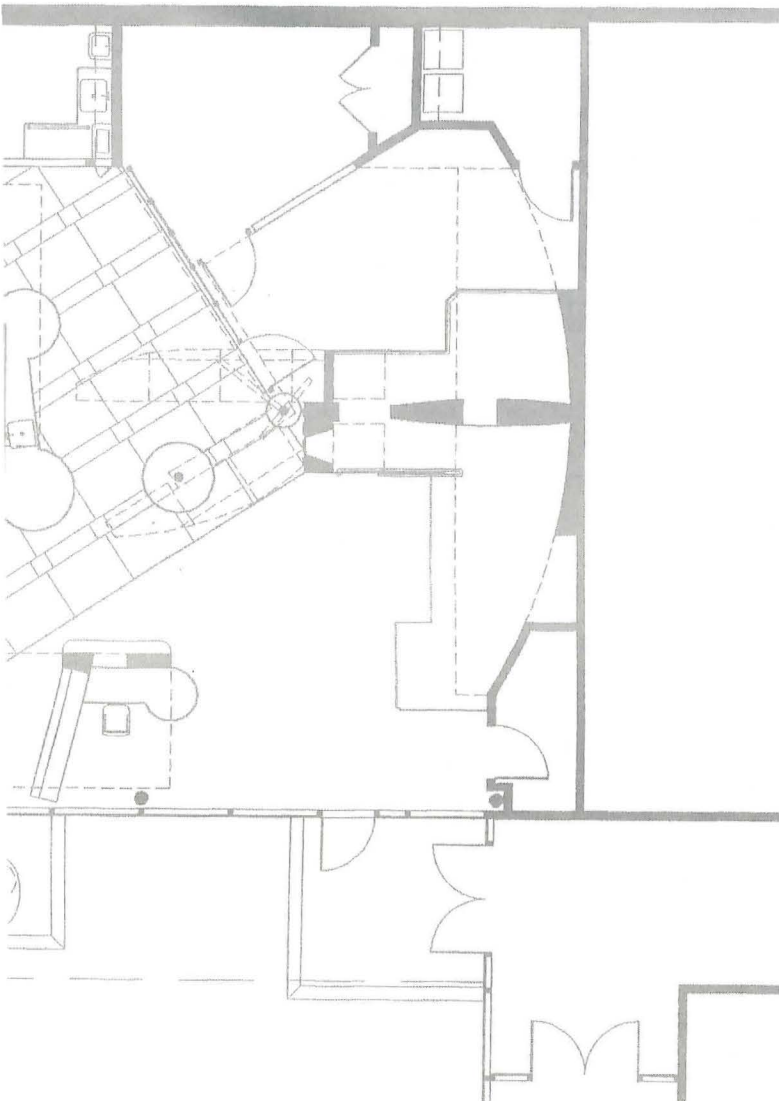
The Van Alen competition is the oldest continuous design competition in the United States and is open to students and graduates who are no more than 10 years out of school.



a

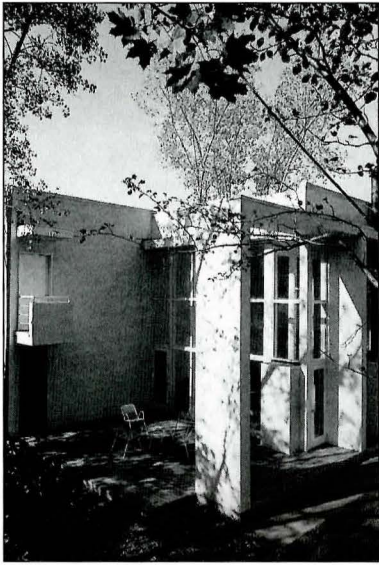


b



c

SCHOOL NEWS



Private residence, Syracuse, NY
Arthur McDonald, Architect

Change in Leadership

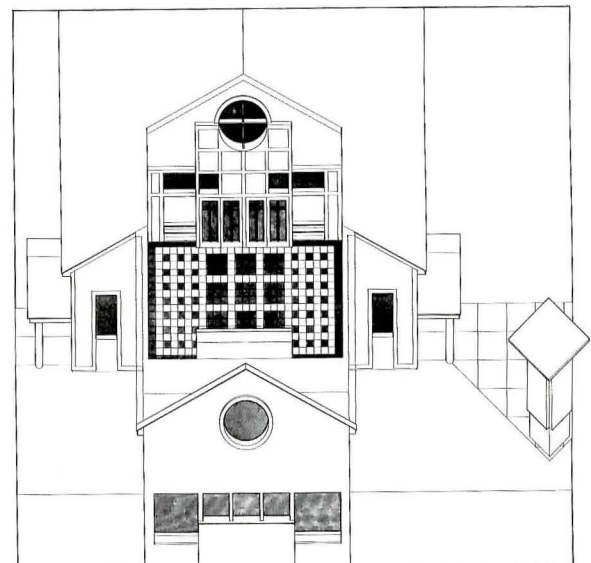
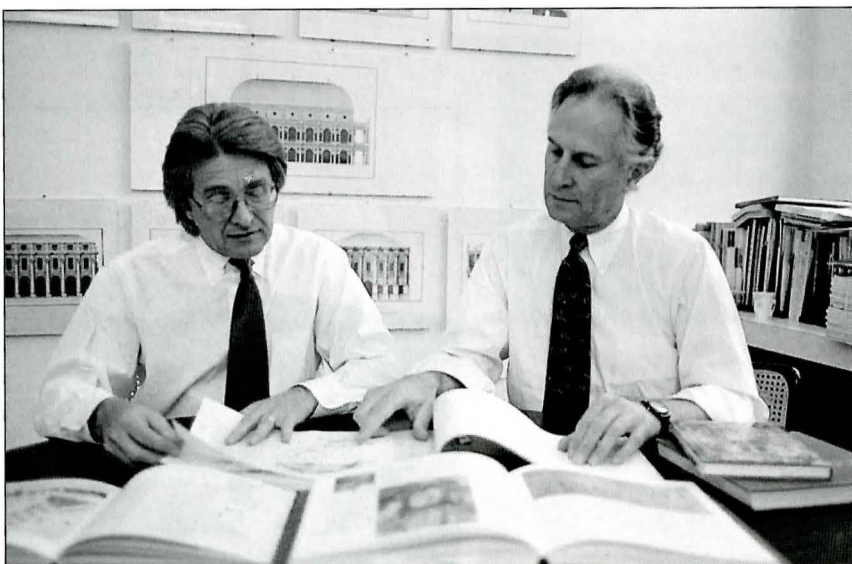
In July Dean Abbey announced changes in leadership for both the graduate and undergraduate programs within the School of Architecture. For the last six years, Professor Christopher Gray has guided the graduate programs of the school, encompassing both the M. Arch. I in Syracuse and the M. Arch. II in Florence; likewise, Professor Randall Korman has provided leadership to the Undergraduate Program. Korman resigned in July of 1996 to resume the duties of a full professor within the school. Gray has accepted the chairmanship of the Undergraduate Program, and Professor Arthur McDonald has been appointed as the new chairman of the Graduate Program, taking on Gray's former duties. McDonald, who headed the undergraduate program during the '80s, has been teaching and pursuing his own research and practice for the last seven years.

Gray and McDonald each bring a unique vision for leading the undergraduate and graduate programs. Gray plans to build upon the traditional strengths of the school, which have included providing a sound professional education and preparation for practice through strong technical, structures, and design curricula. Gray's conviction that knowledge finds its worth in the basis of application and testing of ideas, connects with this tradition. He understands his charge to be the development of a stronger theoretical focus in the Undergraduate Program, much as he did in the Graduate Program over the past six years. Further, he would like to see undergraduates focus more aggressively on their own development by helping them broaden their exposure to a wider range of professionals and thus enable them, ultimately, to develop a critical practice which takes on contemporary issues. Gray will also focus his attention on the curriculum, particularly on the question of how to assist students in the integration of knowledge acquired in technologies, structures, and history courses, with design.

McDonald also sees many strengths upon which to build. He plans to continue the open-door, service oriented approach which has been the trademark of the Graduate Program Office. One of his priorities is to continue and enhance the creation of an identity for the M. Arch. I program. Last summer, the graduate studios were enlarged to house both first- and second-year studios, review space, and a seminar area. He is also interested in supporting the publication of student work, including design, research, and papers in related disciplines and is putting together a volunteer committee of students to initiate this project. McDonald would also like to increase support to students by ensuring that they are aware of the resources available to them, such as the competitive grants program through the Graduate School. Areas of curricular concern include the integration and use of computers and reorganization of courses into structured elective concentrations. McDonald would like to enable students to choose a critical path for themselves early in their graduate education, to ask important questions using design as a means of inquiry, and to sort out the many conceptual trends currently in the profession.

below
Christopher Gray, Chairman
of the Undergraduate Program (left)
and Arthur McDonald, Chairman
of the Graduate Program

right
Narthex of St. Therese Catholic Church,
Syracuse, NY
Christopher Gray, Architect



A Gift to Sustain the Art of Architecture

Although the School of Architecture existed only as a program within the College of Fine Arts when Louise Woodroofe graduated from Syracuse University at the beginning of the century, she bequeathed a generous portion of her estate to ensure the future of the school and its students.

Woodroofe received a B.A. from the College of Fine Arts (now known as the College of Visual and Performing Arts) in 1919, and then did graduate work in Massachusetts and Pennsylvania. Returning to her home state of Illinois, she taught drawing in both the Art Department and the Department of Architecture at the University of Illinois for many years.

This well-respected professor passed away last winter. In her will she requested that the remainder of her estate, with an estimated value of \$300,000, be held as an endowment by the Syracuse University School of Architecture. In keeping with Woodroofe's wishes, the money will provide scholarships to students who demonstrate "the promise of excellence" in architecture.

In addition to her work with architecture students, Woodroofe was an accomplished artist who exhibited paintings in leading galleries throughout the United States. She was most noted for paintings of clowns and circus figures, an interest that led to her long-standing personal association with the Ringling Bros. and Barnum and Bailey circuses. She completed many sketches and large canvasses of circus life, including portraits of the famous clown, Emmett Kelly.

The Dean of the School of Architecture, Bruce Abbey, expressed his pleasure regarding Woodroofe's gift. "It is an extraordinarily wonderful bequest," he said. "Several scholarships will be made possible through her generosity."

Many creative ways exist for former graduates to help ensure the future growth and success of the School of Architecture. One popular method is making charitable contributions through a will, just as Woodroofe did. This can be accomplished simply by adding a codicil (extra paragraph) to an existing will; it is not always necessary to revise the entire document.

For more information regarding this or other methods of supporting the School of Architecture, contact Katryn Hansen, assistant dean, at 315-443-5078.

The Peter Moore Scholarship Fund: A Living Tribute From His Colleagues

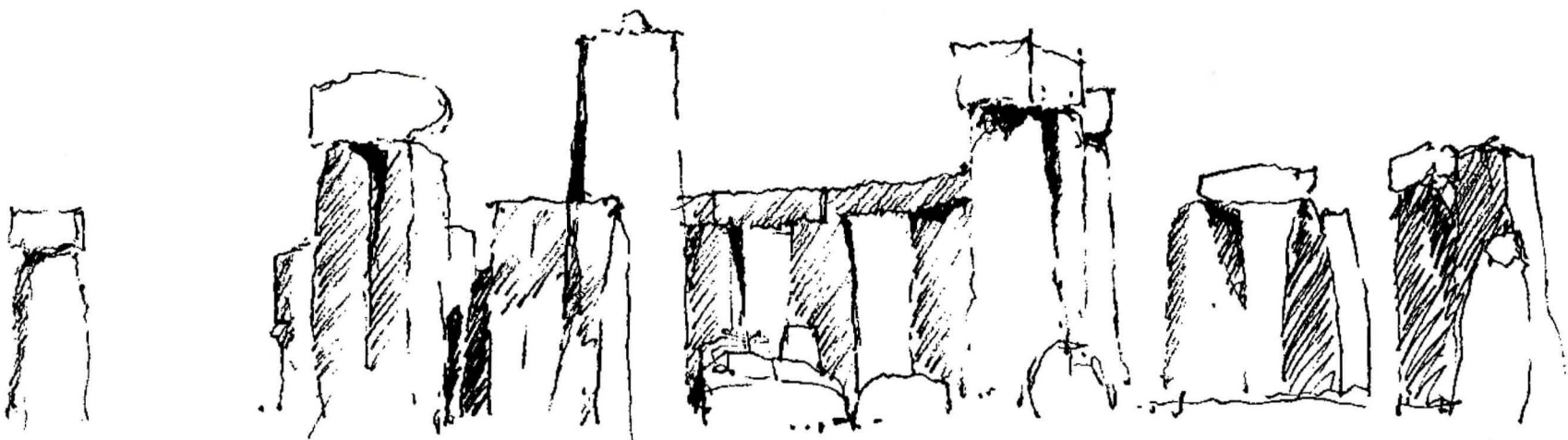
In late fall, the School of Architecture received word that Peter Moore (B. Arch. '62) had died suddenly of a heart attack on September 26, 1996. His colleagues at Schwam Architects, a firm in the Philadelphia area where he had been a partner for many years, decided to pay tribute to his talent, friendship, and commitment to architecture, by establishing an endowed scholarship in his honor at the School of Architecture.

During the last four months, Schwam Architects has raised \$25,000 to establish the Peter Moore Scholarship Fund, which will support a fourth-year student bound for study abroad. The idea for a scholarship to support study abroad came from Peter Moore's own love of travel and his remarkable sketching ability. Moore possessed extraordinary skill in transmitting architectural ideas through the medium of hand drawing. His travels were made with sketchbook in hand, as opposed to a camera, and his sketches remain treasured items among his friends. His colleagues remember him to be happiest when he was teaching, whether it was an intern or another staff member, and so it is even more fitting that the funds raised in his memory be applied to support architectural education.



above
Peter Moore's drawing of Leeds Castle
below

One of Peter Moore's sketches from his travels in England





Superjury Showcases Architecture's Finest

Every spring, just before graduation, there is a noticeable change in the atmosphere at the School of Architecture. This aura of quiet, intense study combined with an element of restrained excitement means that superjury is just around the corner.

Originally created as a way to showcase student work before an audience of notable architects and educators, Superjury continues to be an honor students strive for and look forward to. All fifth-year and graduate students complete their theses for a review by the faculty. The faculty invites the students whose theses earn the highest grades to present their projects again the next day to a group of guest jurors and outside faculty members.

The jurors—including faculty and guests—form small groups and move from project to project throughout the day as the students present their theses. At the end of the day, the jurors decide who will receive prizes. Three categories of prizes are presented. The highest honor, the James A. Britton Memorial Award, was made even more valuable this year by the presence of James "Jack" Britton himself. He sat in on the reviews, enjoying the opportunity to be involved in the excitement. Three recipients of this top prize receive \$2,000 each. Britton created the awards in honor of his father, James A. Britton, who graduated from the school in 1928. The second prize category is the Dean's Thesis Citation. Recipients earn a citation and a cash award of \$500. All other participants in Superjury receive a citation, and five or six may receive cash prizes.

Excitement builds as students await the results of Superjury, which are kept secret until Convocation, when a variety of awards are presented to both undergraduate and graduate students. The last of these to be announced are those recognized by Superjury.



The following awards were presented to graduating students in May: James A. Britton Memorial Award for Best Thesis: Christopher M. Pizzi; James A. Britton Memorial Award for Outstanding Thesis: Kang H. Chang and William C. Truitt; Dean's Thesis Citations: Eric J. Sturm, Roberta L. Termini, and Katherine A. Grove; Thesis Citations: Shawn M. Corp, Stacey C. Hopkins, Dawn M. Hughes, William F. Kavanagh, Michael P. O'Shea, Rosa D. Shue, Garrett M. Singer, Karin N. Skillin, Jennifer R. Tucker, and Victor F. Vitale; Alpha Rho Chi Medal for Leadership, Service, and Merit: Steven T. Wong; American Institute of Architects Henry Adams Prizes for First and Second Highest Academic Ranking (Undergraduate): Christopher M. Pizzi and Christine M. Mason; Luther Gifford Prize in Architecture for Highest Rank in Scholarship: Christopher M. Pizzi; New York Society of Architects Matthew W. DelGaudio Award for Total Excellence in Design: Roberta L. Termini; School of Architecture Graduate Assistant Prize: Alexander K. Wing; 1996 Graduate School Prize for Architecture: Roseanne Hennessey; Master of Architecture I Graduate Award for Significant Contributions to the Program: Jean M. Orino; American Institute of Architects Henry Adams Prizes for First and Second Highest Academic Ranking (Graduate): Katherine A. Grove and William C. Truitt.

Superjury 1996 was comprised of the following prominent members of the architectural community:

James A. Britton Jr., vice president of Austrian Roth and Partners, New York; sponsor of the James A. Britton Memorial Thesis Prizes

Maurice Cox, professor, School of Architecture, University of Virginia, Charlottesville, Virginia

Urs Gauchat, dean, School of Architecture, New Jersey Institute of Technology, Newark, New Jersey

J. Rodman Henderer, vice president, RTKL Associates, Inc., Washington, D.C.

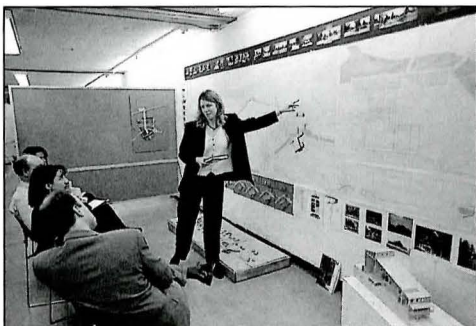
Kent Hubbell, chair, Department of Architecture, College of Architecture, Art, and Planning, Cornell University, Ithaca, New York

Brian Kelly, professor, School of Architecture, University of Maryland, College Park

John Ostlund, architect, Skidmore Owings & Merrill, New York

Marion Weiss, professor, Architecture Department, Graduate School of Fine Arts, University of Pennsylvania, Philadelphia

Richard Hawks, professor, landscape architecture and chair, Landscape Program, SUNY College of Environmental Science and Forestry, Syracuse



Summer College

Anyone who knows Lee Morrissette and his family would expect the high school senior to become a professional musician. After all, everyone in his family is a musician and he's played the saxophone for years. However, the Fairfield, Maine, resident has other plans. He's becoming an architect.

"I thought about being a musician, but it's not very lucrative," Morrissette admits. "I've had the idea of being an architect since I was 9 years old. I remember building things when I was little and deciding to one day turn my ideas into real structures."

Morrissette took drafting courses in high school, but says he didn't learn much about architecture from them. So he set his sights on a way to learn about spatial relationships and models, analyzing architectural styles, and building a portfolio. He found the Summer College program at SU.

"I thought this program would be a great way to get a taste of architecture and what it's all about. Since I wasn't convinced if I should go into architecture, I felt this would either really interest me or turn my attention away from it," he says. "I am having a blast. Architecture is something I can really get into."

The six-week program allows high school students to start college early and test their career interests first hand before making crucial decisions about their futures. They earn college credit in a drawing class and design studio, learn from School of Architecture faculty members, work in undergraduate studios, live in campus residence halls, and get a taste of being a student in a very demanding program.

This summer 16 students from as far away as Japan took part in the program. They spent four days a week in classes and many extra hours in studio working on projects. The classes incorporated lectures; field trips to the Everson Museum, architecture offices downtown, and the Louis Kahn Unitarian Church in Rochester; and architectural films. Professor Randall Korman demonstrated how to assemble a portfolio needed to apply to architecture programs.

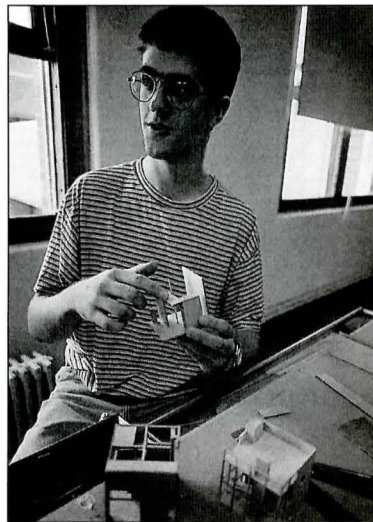
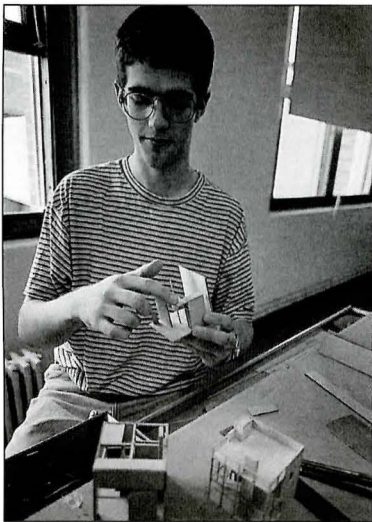
Throughout the program, which ran from July 1 to August 10, the students had individual pin-ups of their work; a critique of their first project at the midpoint; and a review at the end juried by the dean, head of the undergraduate program, and other faculty members.

"Most of the students were very serious, and I think there's a good chance they'll come here after they graduate from high school," says Assistant Professor Lea Ciavara (M. Arch. '95), who taught the courses with Assistant Professor Timothy Swischuk. "Some of our current undergraduates said they came here because of their experiences in Summer College."

"This is a great experience for students. It gives them a chance to see what the studio atmosphere is like. Studio is different from the traditional lecture format they had in high school. This is a close representation of what college will be like for them as architecture students."

Morrissette agrees, admitting that he didn't realize the amount of work that goes into an architecture degree. "It takes a lot of time to make your ideas right. I pulled three all-nighters to get my projects the way I wanted them," he says. "I called my parents once really exhausted, thinking architecture wasn't right for me. But the next day I was recharged, excited to get started on the next assignment."

Much of that motivation comes from the other students in the program. "It's been great for me to spend so much time with the people in my program. I've learned a lot from them and have made quite a few friends," Morrissette adds. "One guy and I want to room together if we both make it into the Syracuse program after we graduate."



Lee Morrissette discussing one of the models he made during Summer College this past summer.

Kermit Lee Jr. Scholarship

from cover

Lee's early career included teaching and practice in Boston, as well as working as a designer and planner in Braunschweig, Germany, and Zurich, Switzerland. Returning to Syracuse, he began teaching at SU in 1966 and subsequently established a practice with colleagues, now also professors emeriti, William Scarbrough and Louis Skoler.

An important member of the design and technical design faculty, Lee taught at all levels from first-year studio through the graduate program. His characteristic warmth and concern for students and their professional and personal development won him loyal friendship and ongoing connection with many of the school's alumni.

His career has been distinguished by his participation in international projects, competitions, and proposals. Lee has also participated actively on state and national licensure boards, serving on the New York State Board for Architecture and the Architectural Registration Examination Committee. He won a prestigious National Endowment for the Arts Design Arts Award and received the lifetime honor of Fellow in the American Institute of Architects, the highest honor given by the AIA to its distinguished members.

Lee served on the faculty until his early retirement in 1995. His decision to step down was precipitated by his ongoing recovery from a stroke in 1994. Throughout a career of professional accomplishment, Lee has been a highly respected teacher, mentor, and devoted advisor to several generations of students. This fund was created to honor the qualities of professional promise, leadership, inventiveness, and service which Lee embodied throughout his career.

We ask for your support of this fund to honor Lee and his legacy of inspiring and encouraging students, and to recognize a lifetime of professional achievement. Your gift will be pooled with those of other alumni and friends in a special endowment that will support scholarships each year. The goal of \$300,000 will create an endowment sufficient to fund three scholarships: one each for a third-, fourth-, and fifth-year student. This endowment fund will be built by your pledges until the year 2000.

For its part of the University's five-year Commitment to Learning campaign, the School of Architecture has identified creating new scholarships as its top priority. The Kermit J. Lee Jr. Scholarship Fund, with its goal of rewarding excellence as well as supporting financial need, meets the goals of the campaign.

Send checks payable to Syracuse University to the Kermit Lee Scholarship Fund, School of Architecture, 103 Slocum Hall, Syracuse University, Syracuse, NY 13244-1250. For more information contact Katryn Hansen, assistant dean, at 315-443-5078; e-mail: kehansen@syr.edu



Kermit J. Lee Jr.

To Contribute

To the Kermit Lee Scholarship fund, please use the enclosed, postage-paid envelope.

The Campaign Challenge



Professor Lee received a standing ovation from the assembled group



Dean Abbey addressed Professor Lee and his family



Kittenger, Hathaway, and Palumbo



*above
Ronald, Cathy, and William Lee
below
Dean Abbey with Jennifer Bayer,
Bruce Fowle, and Richard Gluckman*



*above
Professor Lee with R. Steven Lewis
below
Thomas A.K. Queenan addressed
Professor Lee and the group*



Report of Gifts to the School of Architecture, January 1-December 31, 1996

We want to thank all of our friends and alumni who contributed to one of the school's accounts during the past calendar year. This includes the Friends

of the School fund, the D. Kenneth Sargent Professorship and several other award and scholarship accounts.

Society of Fellows Gifts (\$2,000 or more)

Estate of Louise M.
Woodroffe
Gerald B. and Daphna
Cramer
James A. Britton Jr.
Beth M. Duncan
Peter and Jennifer Eio
Mary Margaret Jordan
Bruce S. Fowle
James M. Jordan
Thomas C. Large

Dean's Circle Gifts (\$1,000 or more)

Bruce J. and Linda Abbey
Thomas F. and Katherine
F. Benzel
Leonard K. and Edna
Du Brul
Lenord G. Cubellis
Steven Einhorn
Joanne J. Goldfarb
James Stewart Polshek &
Partners
Steven A. Rugo
Paul E. Scoville
Frederick W. Stelle
Eric Yaffee

Gifts of \$500 or more

Richard E. and Nancy
Becker
Richard Gluckman
James M. Van Strander
Norman J. Wiedersum

Gifts of \$250 or more

Ronald G. Armstrong
Mr. and Mrs. Emilio Ferri
Kirk Helm
Wilbur R. Ingalls
Siegfried Snyder
Mr. and Mrs. Franklin
I. Bartholomew
George C. Eaton
Sarah R. Epifano
Joseph Fleischer
Lawrence A. Greene
Jay Haverson and Carolyn
Weinberg-Haverson
Howard and Pauline Hirsch
William E. Jones
David T. Kahler
R. Steven Lewis
Marvin B. Mitchell
Charles J. Moore
Mr. and Mrs. Stephen B.
Morgan
Ellen T. O'Leary
Mr. and Mrs. Douglas
L. Olsen
David L. Piaker
Warner H. Schmalz
Frank M. Slingerland
Donald W. Wood

Gifts of \$100 or more

David M. Cunningham
Daniel V. Garbowit
Edward A. Masek
Eric D. Richert
Jeanne Y. Russell
Donald W. Strong
Robert Worsham
Scott C. Galczynski
Gregory A. Fraser
Paul W. Hanreeder
Peter Hitt
Anthony Paskevich
Robert M. Stillings
George R. Green
Mark L. Bukovnik
Hugh E. Hallenbeck
Francis E. Hares
Steven A. and Elizabeth
Rocco
Quentin E. Armstrong
Gail L. Ascher
Ervay J. Baker
Mr. and Mrs. Thomas W.
Baxter
Raymond L. Beeler
Timothy J. Blish
Kenneth B. Bobis
Dante E. Boffi
Richard B Buchanan
Walker J. Burns
Harriet P. Carpenter
John Y. Critchley
Arthur F. Cutter
Mr. and Mrs. Bared
L. Dabaghian
Robert I. Derck
Charles J. Doerfler
Joseph G. Doherty
David W. Evers
Marc Fetterman
J. Francois Gabriel
Robert H. Gantner
Paul C. Garbaczeski
Laura C. Girandola
Melissa J. Goodill
Melissa P. Gurrieri
William I. Houghton
Murray Hueber
Anthony J. Ianniello
Arthur W. Infanger
Mr. and Mrs. W. Brian
James
David P. Jones
Philip F. Kaminsky
Barry M. and Judy K.
Keesan
Mr. and Mrs. Michel Kril
A. Stevens Krug
Paul Lynch
Robert R. and Elizabeth
Majewski
Carl R. Malm
Paul H. Malo
Peter J. Moore
Peter L. Morse
Anita M. K. Parker
A. Rockwell Perkins
Jonathan G. Perlstein
Daniel D. Perry
Phillip W. Pratt
Conrad R. Remick
Darrel D. Rippeteau Sr.

Gary A. Rothberg
Carl F. Saucke
Frederick G. and Phyllis
B. Schwartz
Elizabeth J. Scott
Dana G. Stetser
Mr. and Mrs. Stanley
H. Taylor
Patricia A. Waddy
Scott U. Walls
Henry E. White
Douglas W. Whitney
Peter S. Willcox
Mark M. Winkelman
John E. Wittmann
David P. Wurster
Philip E. Yocum

Gifts of \$50 or more

Philip O. Bean
Thomas H. Castelein
Robert G. Pease
Peter Ryan
Daniel P. Whalen
Roma Loren
Randall S. and Marthanne
Luther
John A. Majoros
David C. and Helen Ashley
Kenneth C. Bean
Mr. and Mrs. Ivan Belitz
Diego A. Benites
Joseph W. Catalano
Margaret Clark
Timothy P. Cohen
Norman J. Davies
Joseph A. Defino
Mr. and Mrs. Richard
A. Dillon
Robert J. DuPont
James W. Emr
M. Russel Feldman
Mr. and Mrs. Wilfried
E. Graeff
Thomas E. Grimble
David G. Holmes
Mr. and Mrs. Jay R.
Jackson
Kenneth J. Kerly
Tack H. Kim
Catherine M. Knight
James and Peri Kutchin
Richard T. Lafferty
Mr. and Mrs. Bruce J.
Linkov
Joseph J. Lomonaco
Jeffrey P. Ludwig
Mr. and Mrs. Kenneth C.
MacKenzie
Mr. and Mrs. Ronald
J. Masotta
Mr. and Mrs. Richard F.
Michaels
Neal I. Payton
Jose A. Rodriguez
Peter Salins
Mr. and Mrs. Eugene
J. Schilling
H. Case Simpson
Mary Ann Smith
Chester P. Soling
Theodore A. Stolte
Mark A. Sullivan
Scott K. Van Sweringen
Henry and Janice Yeh
Reuben K.S. Zane

The Campaign Challenge



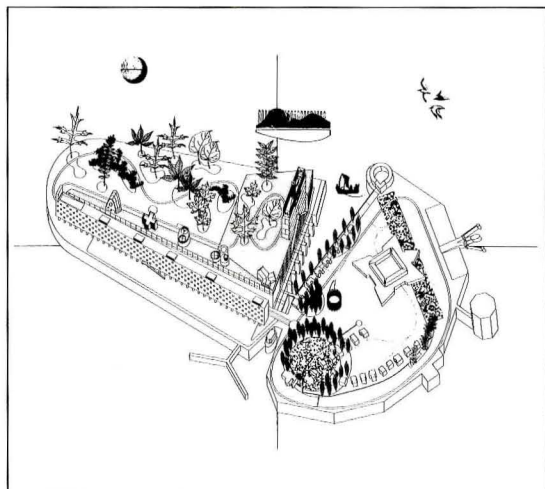
Gifts up to \$50

Gerard D. Damiani
Joseph F. Galea
Douglas H. Lyon
Mr. and Mrs. Robert Manzano
Hannah N. McClennen
William J. Collishaw
Elizabeth L. McClure
Sharon J. Narburgh
Hans Nepf
Brian J. Anderson
Joseph A. Buchek
Tori Budgeon-Chinea
Patrick H. Flynn
David A. and Linda Souers
Mr. and Mrs. Joel A. Spanier
Robert A. Aikman
Chester W. Ambler
Jody P. Barker
Michael R. Barthold
Richard B. Bauschard
Laurence S. Brodsky
Ann Chaintreuil
Jack F. Chun
Richard Colson
Gary Constantino
Jonathan W. Cowles
Julia E. Craighill
Alfred H. Dal Pos
Robert C. Dexter
Stephen E. Dorgan
Eli Eisner
Mark J. Gompels
Jayme S. Harvey
Paul J. Hueber
Gregory D. Jones and Maureen Devey Jones
Stephen G. Juliano
Tomasz Kasman
Mr. & Mrs. Edward L. Kehr
Mark T. Ledger
Charles R. Lyons
William J. Metzger
Louis L. Milano
Frederick L. and Anne Mitchell
Heather A. Mitchell
Deborah G. Morgan
Kevin D. Murrett
Serge D. Nalbantian
Alice J. Raucher
Elizabeth L. Reed
Edward D. Rice
Mr. and Mrs. George A. Rodenak
Mr. and Mrs. Richard M. Sachs
Eric P. Svahn
Jean Webster
Stephen Wilson
Barry A. Wood
Paul K. Zane
Jeffrey R. Zephir
Ronald W. Colon
Ralph F. Carmosino
Mr. and Mrs. Sean J. Curry
Dana L. Davis-O'Connor
Joel M. Derby
Ernest Frederick Hoeldtke
Joan M. Humphreys

Gregory J. O'Connor
Robert J. Salvaggio
Elizabeth M. Warner
Bruce J. Spiewak
Azzah Aldeghather
Robert C. Armbruster
Albert H. Arnold
Richard J. Baiano
David S. Baker
Robert V. Bishop
Joseph D. Bova
Elizabeth G. Braun
Ronald L. Brown
Cordelia L. Buell
Melissa Cabre
Rene G. Calara
Christopher Carpiello
William W. Chapman
Robert E. Charron
David E. Chase
Catherine W. Claman
Dennis E. Cox
David M. Crawley
Jack B. Davis
Torquato De Felice
Joseph T. Deppe
Leonard M. Duke
Lisa R. Eader
William S. Elkins
Peter J. Ewers
Frederick T. Fay
Robert N. Finger
Robert Fleischauer
Milo D. Folley
Alan A. Fredericksen
Arthur C. Friedel
Suzanne J. Friedland
John J. Ginley
Peter D. Greaves
Adam A. Gross
Kenneth A. Guido
Anna Z. Hack
Allen B. Hagar
N. Robert Hale
Robert I. Hench
J. Rodman Henderer
William F. Hermann
John R. Hoke
William G. Hotaling
Peter B. Houseknecht
Alan B. Hucaby
Myles K. Hyman
Virginia R. Jefferis
James J. Jennewein
Laura L. Keenan
John C. Kelly
Eric D. Kornfeld
Allen S. and Tess Kosoff
Robert E. Kuehn
Edward G. Lesko
Donald C. Lisoway and Susan Riordan
Jeffrey T. Malter
Thomas Manion
Alfred J. Mazur
Douglas B. and Tina McCoach
Galy M. McSweeney
Michael G. Meyers and Deborah Lally-Meyers
James R. Miller

Lawrence D. Minsker
Eduardo R. Molinari
Jon Eric Moss
Richard G. Nemeth
Marc J. Oplinger
Michelle S. Paone
Merike Phillips
Nicholas A. Phillips
Roy Raskin
Darrel D. and Judith H. Rippeteau Jr.
Diana G. Rivera
Richard M. Roberts
George T. Rockrise
Alberto T. Rodriguez Sobrino
Peter M. Ryan
W. Thomas Schaardt
Peter A. Schubin
Wolfgang Schueller
Michael Schutzel
Mr. and Mrs. Robert W. Secor
Gerry J. Senf
Sheri C. Shaw
David C. Sinclair
Richard C. Slingerland
Lloyd H. Slomanson
Rosamaria Soltero
Howard S. Soper
Gerald T. Takano
Laurence D. Tamaccio
Robert S. Townsend
Lee F. Uhlmann
Viestarts Vacenis
William H. Vandersteel
Mark D. Vincello
Michael and Gillan Wang
Frederick S. Webster
David J. Wildnauer
Jere T. Williams
David R. Wolfe
John Stewart and Sally Wroe
Douglas A. Yorke
William H. Eisenberg
Brett W. Kearney
Virginia S. Knight
Melvin L. Moore
Lester F. Myers
Bonnie A. Nault
Richard C. Perry
Robert J. and Karen Sherman
Mr. and Mrs. Elliott C. Stratton
James D. and Shirley Terrinoni
Kenneth J. Williams
Vincent Codispoti
Mr. and Mrs. H. Duane Neyman

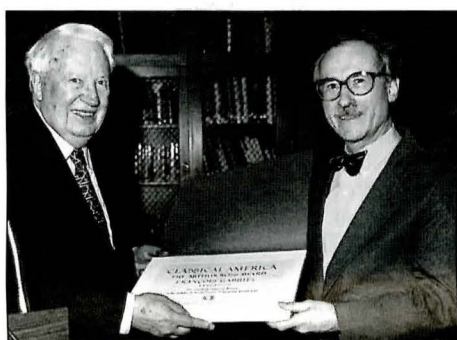
FACULTY NEWS



Governor's Island
Czerniak + Swischuk

Julia Czerniak and **Timothy Swischuk** have been awarded the USA Institute Second Prize for Excellence in Architectural Design 1996 ex-equo for their entry in the International Design Competition "The Lost Archipelago: Governor's Island," sponsored by the Urban Studies and Architecture Institute at the New Jersey Institute of Technology. The competition sponsors asked participants to revisit critically the practical, poetic, and political aspects of design while soliciting ideas for the future use of Governor's Island in the New York City Bay, which served until this year as a military base.

Assistant Professor **Terrance Goode** has written a number of publications and delivered presentations in a variety of venues. Recent scholarly work includes an article titled "Hyper-reality 90210: The Postmodern Geographies of Two Rodeo Drive," which is forthcoming in the *Journal of the Center for the Study of American Architecture*, Vol. 10 (Austin, Texas). Also soon to be published is a review of K. A. Franck and L. N. Schneekloth, eds., "Ordering Space: Types in Architecture and Design," in the *Journal of Architectural and Planning Research*. In October, Goode presented a paper on "Critical Practices" at the West Central Regional Conference of the ACSA in Ames, Iowa, and last spring served as an invited design juror at the School of Architecture at the University of Virginia and at the University of North Carolina at Charlotte.



Professor Gabriel, right

In spring of 1996 Professor **François Gabriel** was honored by the directors of the Classical America Society who presented him with their 1996 Arthur Ross Award for Education. Classical America is the society founded to encourage the classical tradition in the arts. The Arthur Ross awards are presented annually to a painter, sculptor, architect, landscape architect/gardener, architectural renderer, craftsman, patron or institution whose mature work exhibits continued excellence and integrity in its application of classical ideals and canons. The award was presented on April 29 at the National Academy of Design in New York by Sir Edward Heath, KG, MBA, MP, a former Prime Minister of the United Kingdom and a musician and art collector. The ceremony was followed by a reception and a dinner at the Century Club, which was designed in the classical tradition by Stanford White. Gabriel has also been invited to join the membership of the Japan Institute of Hyper Space Science, headquartered at Kyoto University. One of his designs appears in *Hyperspace*, the journal of the institute (Vol. 4, #3, p. 13).



Associate Professor **Susan Henderson** participated in two symposia this past year. She presented "German Social Housing of the Weimar Republic: A Revolution in Daily Life" at the inaugural symposium of the Wolfsonian Museum, "The Politics of Design, 1885-1945." With Assistant Professor **Kristen Schaffer**, she chaired the session "Esotericism and Modern Architecture" at the national meeting of the Society of Architectural Historians in St. Louis.

Henderson was also a visiting professor at Philipps University in Marburg, Germany, during summer of 1996 and received a study fellowship from the German Academic Exchange Service to pursue research in Frankfurt and Berlin. Recent publications include "A Revolution in Woman's Sphere: Grete Lihotzky and the Frankfurt Kitchen," coming out this fall in a book titled *Architecture and Feminism*, published by Princeton Architectural Press, and "New Designs Create New People: The Pavilion Schools of Weimar Frankfurt as a Model of Pedagogical Reform," published in the journal *Design Issues* this February.

Randall Korman stepped down from his position as head of the Undergraduate Program at the school as of July of 1996. During his six-year term, Korman introduced several innovative programs particularly in the areas of recruitment and admissions, and student services. To increase the quality of applications he created an annual High School Design Competition now sponsored by LEGO Systems, Inc., which awards scholarships each year and also serves to educate high school students and their advisors on entry requirements for the school. Korman also expanded the role of peer advisors for incoming students and created a faculty manual and guidelines to support and enhance advising for students. Prior to stepping down, Korman was promoted to the rank of full professor by faculty and senate vote. He will pursue continued research interests and currently teaches in the third-year design studio, in addition to coordinating the High School Design Competition program.

Associate Professor **Ivan Markov** received a grant of \$2,900 from the Center for Instructional Development at SU, matched with the same amount by the school. The grant will be used to implement a new instructional strategy for Structures III through the use of computers and video presentations. The implementation is expected to improve the quality of teaching and enhance the student learning process.

An invited reviewer and moderator, Associate Professor **Francisco Sanin** attended the ACSA European Conference *Constructions of Tectonics for The Post-Industrial World* in Copenhagen, Denmark, during May 1996. Sanin moderated a panel called "Tectonics and Representation."

Assistant Professor **Kristen Schaffer** has been inducted into the Golden Key National Honor Society, an academic honors organization founded to recognize and encourage scholastic achievement among students. Schaffer was nominated by fourth-year student Michael Rodenak.

Assistant Professor **Oswaldo Valdes** had an article published in Italy last summer titled "Deposito Per Legno, Hegartz, Germany," *DOMUS*, Milano, Italy, Maggio, 1996.

During the April 1996 annual meeting of the Society of Architectural Historians, Professor **Patricia Waddy** was elected president. Recent scholarly work includes a forthcoming article titled "Giacinto del Bufalo, Maestro delle strade and Homeowner," in *Studies in Architectural History* in Memory of Richard Krautheimer, Mainz: Verlag Phillip von Zabern, 1996.

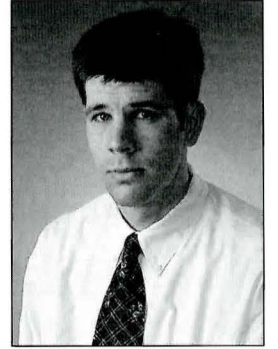
New Faculty

A recent graduate of the School of Architecture's M. Arch. I program, **David Cunningham** (M. Arch., '95) is a new tenure-track assistant professor currently teaching first-year design as well as an introductory course called the Art of Architecture. This course is offered to all University students as a liberal arts elective. In addition to teaching, Cunningham's professional background includes extensive travels and summer internships in Athens, Greece; Jackson, Mississippi; and Baltimore. On-going projects include illustrations for an upcoming book *The Room Reconsidered*, a modest house in the Helderbergs, and finally a growing interest in small towns along the old Erie Canal.

Elizabeth Kamell has joined the faculty of the School of Architecture as an assistant professor for the year, having completed an S. M. Arch. S. at MIT. She earned a B. Arch. at Cornell University School of Architecture and is a registered architect in New York. Her previous teaching experience includes serving as a teaching assistant and then studio coordinator at MIT and the University of Miami, both in undergraduate and graduate urban design studios. Since 1982 she has participated in a number of architectural practices in Italy and the U.S., most recently working with Galfione and Cox in Florence, Italy; Moran and Guggenheimer in New York; and in Boston, with Todd Lee - Clark - Rozas, Michael Dennis and Associates, and in independent architectural practice. Among her design awards is winning first place in the Chester Square Urban Design Competition. Professor Kamell is teaching in the first-year design studio.

C. Andrew Klamon joined the faculty in Syracuse and teaches second-year design, after serving for the last two years as a visiting professor at the Hammons School of Architecture at Drury College in Springfield, Missouri. Educated at Loyola University, the University of Notre Dame (Rome Studies Program), and Cornell University where he earned a master of architecture and urban design, Klamon also brings significant professional experience to his teaching. He has been the principal in the firm Sierra Studio Architects and has also worked with Yarger and Associates, the Christner Partnership, and Hastings and Chivetta, all in St. Louis. Among his honors and awards is an AIAS Outstanding Faculty Award, earned in 1994 while teaching at the Hammons School of Architecture.

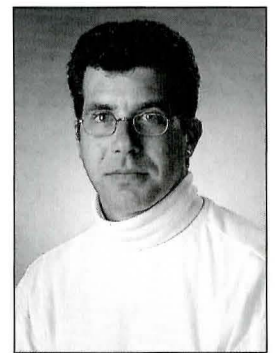
Assistant Professor **Michael Wang** joined the faculty on a full-time basis this year, having served as a part-time instructor during 1995-96. Wang received an M. Arch. I degree at Syracuse in 1989 and currently teaches first-year design and drawing. Wang was honored in October when two projects completed through his practice with the Syracuse firm Holmes • King • Kallquist and Associates received design awards. The AIACNY (Central New York chapter of the AIA) gave its 1996 award for Outstanding Design to the new Baldwinsville Public Library. Wang's extensive involvement with the project included design development of the exterior facades and all aspects of the interior as well as detail development, specifications and working drawings. The second award, also given by the AIACNY, is a Merit Award for design and was given for the executive office of a bank in Central New York in the category of Architectural Interiors. Wang served as both project designer and project manager.



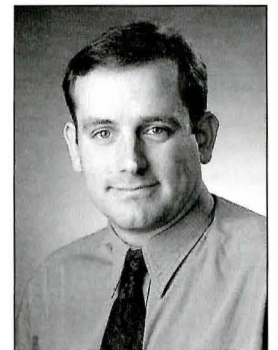
Cunningham



Kamell



Klamon



Wang

ALUMNI NEWS



Epiřano

J. Charles Cataldo (B. Arch. '50) has joined the staff of Dalas Disney & Associates, Architects & Planners in Naples, Florida.

Professor Emeritus **Paul Malo** (B. Arch. '55) was quoted in the "Homes" section of *The New York Times* on September 5, 1996, in an article on boathouses in the St. Lawrence River. An expert on the history and architecture of several regions within New York State, Malo has written many articles, as well as a book titled *Towered Islands*, on the subject of the Thousand Islands.

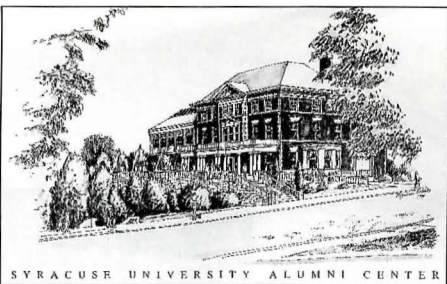
Together with his partners, **Richard S. Hayden** (B. Arch. '60) announced the opening of Swanke Hayden Connell Architects' Istanbul office in Turkey. The firm, which was founded in 1906, celebrated its 90th anniversary of continuous service this year.

Employed by Hunter College, CUNY, **Peter D. Salins** (B. Arch. '61) has published his most recent book titled *Assimilation American Style*. The volume is published by Basic Books and was released in December 1996.

Michael H. Spector, FAIA (B. Arch. '62) has been selected to receive the lifetime achievement award by the Long Island Chapter of the American Institute of Architects (Mineola). The award signifies "outstanding architectural contributions" to the region and recognizes that the Spector Group has designed some of the area's more notable structures, including the corporate headquarters of General Accident Insurance, Computer Associates, North Fork Bank, and Nikon.

Darrel D. Rippeteau Jr. (B. Arch. '73) has announced that his Washington-based firm is now known as Rippeteau Rollins Architecture and Design. Among Rippeteau's recent projects is the renovation and addition to Syracuse University's Faculty Center on Waverly Avenue. Upon completion, the new facility will be known as the Goldstein Alumni and Faculty Center. Work is due to be completed in late 1997.

In addition to his professional practice, Rippeteau is actively involved in several civic and professional organizations. Last year he chaired the organizing committee for the highly successful "Builders' Ball," which was held on October 19 to benefit three Washington-area charities. The event is a collaborative effort among the construction, design, and real estate industries and drew 1,200 architects, contractors, and developers. More than \$50,000 was raised for the three charities.



Alumni Center, Syracuse University
Darrel D. Rippeteau Jr.

Stephen B. Rich (B. Arch. '74) is a principal with WBRC Architects/Engineers in Bangor, Maine. He has just completed a year as president of AIAMaine and is a current co-chair of the Maine A/E Legislative Task Force. His focus in WBRC's 26-person firm is schools, libraries, and federal contracts.

Three recent projects by Philadelphia architect **Reed Axelrod** (B. Arch. '76) have won acclaim. The President's House at Ursinus College in Collegeville, Pennsylvania, won the Finish First Exterior Design Competition, an awards program that recognized project excellence nationwide for innovative design and use of materials in new single-family homes and historic renovations; his affordable house prototype for the City of Winston-Salem in North Carolina won the International Small Home Design Competition and will be published in a volume titled *Small House Designs*, by Tremblay and Von Bamford; and an indoor pool addition in Penn Valley, Pennsylvania, was featured in the October issue of *Philadelphia* magazine.

Callison Architecture has promoted **Paul Moody** (B. Arch. '76) to associate principal. The Seattle-based firm is the fourth-largest architecture firm in the United States with more than 300 employees. Moody is a project manager for Nordstrom, most recently on the newly completed Dallas store.

Donald B. Windelspecht (B. Arch. '76) is president and principal of his new firm, Eastlake Architecture P.C. in Troy, New York.

David Wildnauer (B. Arch. '76) is employed by Parsons-Main, Inc. in Boston.




Steven L. Biegel (B. Arch. '77) has been appointed to the position of director of operations at URS Consultants in Washington, D.C.

CUH2A has announced that **John A. Majoros** (B. Arch. '77) has been made principal of the Princeton-based architecture firm. In November, Majoros and colleague **Liz (Elliott) Cook** (B. Arch. '88), project architect at CUH2A, presented the work of the firm and gave a presentation titled "What It's Like Out There" to a group of 100 students in Syracuse.

Robert Pulito (B. Arch. '79; B.S. Mgmt. '79) has been named a principal in the firm of Stecker LaBau Arneill McManus Architects in Glastonbury, Connecticut.

In March, a private residence designed by **Richard Becker's** (B. Arch. '79) firm, Becker Architects Ltd., Highland Park, Illinois, was selected by jury for the *Chicago and Midwest Villa* exhibition at the Chicago Athenaeum, Museum of Architecture and Design. Becker's entry was a 6,000-square-foot shingle style residence located in Highland Park and completed in 1994. The project was developed and built by Becker Builders Ltd., an affiliate of the architecture firm.

Axelrod's three winning projects

<p>winner Finish First Exterior Design Competition October 1996</p>  <p>President's House Ursinus College Collegeville, Pennsylvania</p>	<p>winner International Small Home Design Competition October 1996</p>  <p>Affordable House Prototype City of Winston-Salem North Carolina</p>	<p>featured Philadelphia Magazine October 1996</p>  <p>Indoor Pool Addition Private Residence Penn Valley, Pennsylvania</p>
--	--	---

Recently appointed chief architect for Prospect Park in Brooklyn, New York, **Ralph F. Carmosino** (B. Arch. '79) is responsible for the restoration of the landmark buildings and bridges throughout the park.

R. Steven Lewis (B. Arch. '79) is a partner in the Los Angeles firm RAW International, which was founded 12 years ago as RAW Architecture. The change in name this year reflects an evolution of the firm into a value-added service organization, stressing the application of a creative problem solving process to a broad variety of client needs. The firm recently won the U.S. General Services Administration's Design Award for Interior Architecture, for a child care center for the Federal Aviation Administration, located with the Hawthorne Federal Building, Hawthorne, California. Lewis was the principal in charge and was co-designer of the project, which was completed last year. *See Alumni Win Prestigious Awards on Page 4, this issue.*

After 13 years with Bohlin Cywinski Jackson in Pittsburgh, **Robert S. Pfaffman** (B. Arch. '79) has opened Pfaffman + Associates, also in Pittsburgh. New commissions for the firm have included an urban design plan for the Mt. Washington neighborhood in Pittsburgh, a house in Weekapaug, Rhode Island, and an historic rehab of a seven-story office downtown. Pfaffman has also created a support group for architects starting their own firms called "GuLP." He was also invited as a guest of the Art Institute of Chicago to help celebrate the 125th anniversary of Daniel Burnham, his great-great-grandfather.

Sarah (Reynard) Epifano (B. Arch. '80) is director of business development for Sordani Skanska Construction Company, with offices in Greenwich, Connecticut. Along with traditional construction services, the firm offers options such as feasibility planning, financing, and operational services and is known as a leader in the field for its dedicated customer-focused approach. Recent successes include a multimillion-dollar Ciba-Geigy Corporation laboratory project in Tarrytown, New York. An active volunteer for the School of Architecture, Sarah has given many hours of her time, energy, and expertise to help create the Kermit J. Lee Jr. Scholarship Endowment Fund.

Formerly deputy treasurer of the City of Philadelphia, **Thomas K. Queenan** (B. Arch. '81) is now the treasurer of the City of Philadelphia. He has recently been instrumental in initiating and guiding the project to create a scholarship endowment to honor Professor Emeritus Kermit J. Lee Jr.

A recent project by **Daniel Allen** (B. Arch. '82) and **Stephen Killcoyne** (B. Arch. '86), who lead the New York firm Allen + Killcoyne, was featured in the November 1996 issue of *House & Garden* magazine. The project, an addition to a Georgian house, was noted for its use of exposed structures and spectacular use of natural light.

Peter Fillat Architects, headed by **Peter A. Fillat III** (B. Arch. '82) has completed the newest addition to Baltimore's Inner Harbor with the first phase of the nationally recognized Inner Harbor East Development, a 107,000-square-foot office building.

John Rountree (B. Arch. '82) was recently featured in an article in the Norwalk area paper, *The Hour*, on his work in promoting the use of solar energy, in particular, photovoltaic cells. Rountree is active with the AIA's Committee on the Environment and will speak before the Connecticut state legislature next month to encourage provision of incentives for solar power. Together with **Peter A. Fillat III** (see above), he wrote an article on the components of green design, which was featured in the January/February 1996 issue of *Maryland Builder*.

Dennis Wedlick's (B. Arch. '83) additions to Philip Johnson's Oneto House north of New York City was reviewed in the July 11 issue of *The New York Times*. Wedlick, who worked for Johnson for 14 years, opened his own practice two years ago.

For the last three years, **Ronald Zeytoonian** (B. Arch. '84) has been a senior design associate with Lee Harris Pomeroy Associates in New York. During this time he has been responsible for three projects: a mixed-use hotel and tower at Battery Park City's southern tip; a 7,200-square-foot apartment overlooking Central Park; and a 102-room luxury hotel in the heart of the Old Town district of Prague in the Czech Republic.

After seven years with Hardy Holzman Pfeiffer Associates as project architect for primarily large institutional projects, **Bruce Spenadel** (M. Arch. '86) decided to switch scales. He has been the principal in his own firm for the past three years in Great Neck, New York, designing residential and commercial projects for the greater New York area. Current work includes a townhouse for NYU Law School, a new 5,500-square-foot house in East Hampton, New York, and a medical facility for Garden City, Long Island.

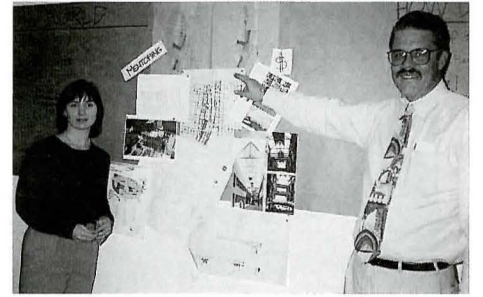
Steven Baum and **Eric Freedman** (both B. Arch. '87) are principals in their own company, Micro Interactive Inc., which produces multimedia applications in New York City for clients such as IBM, Sony, CBS, and MGM. The business employs 35 and has won several awards for the production of a CD-ROM published last year.

After a number of years working as an architect in New York City, **J. Devereaux Hawley** (B. Arch. '88) earned a business degree in Real Estate Development at the University of Pennsylvania. Since then, he and his spouse, Ellen Fuchida Hawley (Arts and Sciences/Newhouse '88), have moved to southern California where he is employed by the Imagineering Group of Walt Disney as Real Estate Development Manager, and she is in the advertising field.

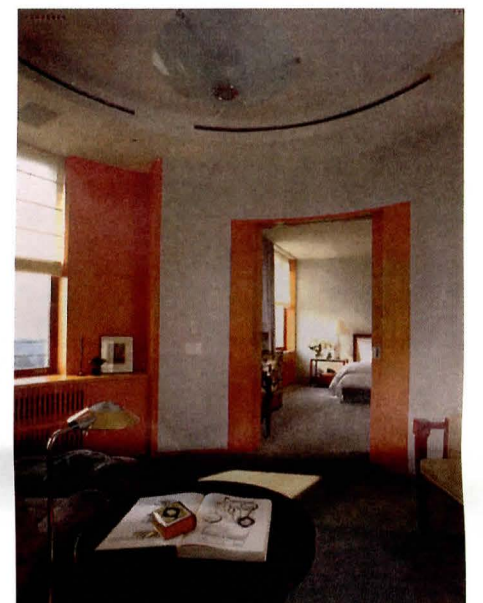
Randal Sickler (B. Arch. '88) was the principal architect for the recently opened Roberts Wesleyan Cultural Center and Performing Arts Building. The project was published in *Architecture* magazine in the November 1996 issue, as part of a feature about computer-designed acoustics. Sickler is employed by SWBR Architects in Rochester, New York.

Thomas C. Stack (B. Arch. '89) and **Jeannine L. Tayler-Stack** (B. Arch. '91) have relocated to Ithaca, New York, where Thomas will pursue graduate study at Cornell University's College of Architecture.

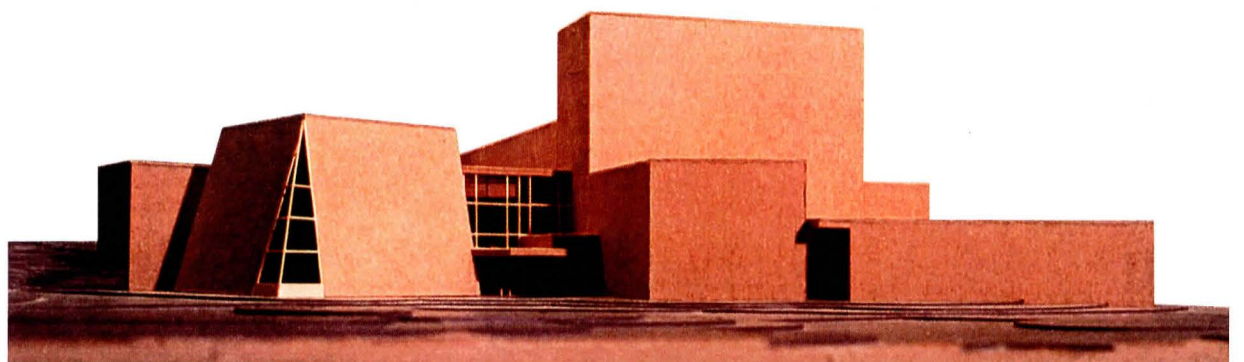
Eric Svahn (B. Arch. '89) is now employed by Graham Gund Architects in Cambridge, Massachusetts.



Cook and Majoros present their work to Syracuse students

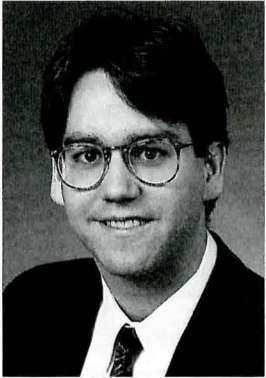


Zeytoonian's New York apartment renovation



The Roberts Wesleyan Cultural Center, Randal Sickler at SWBR Architects

ALUMNI NEWS

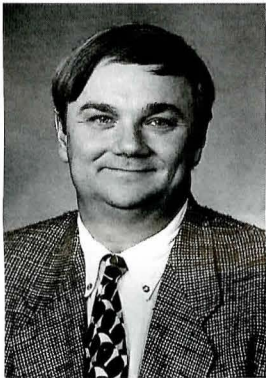


Scott Erdy

Gerard Damiani (B. Arch. '90) has returned to Pittsburgh to open a new architectural office. The practice, studio d'ARC, is dedicated to "an architecture based on the particulars of place through the development of building assemblies which are appropriate to our time, function, and circumstance." After graduation in '90, Damiani worked for Michael Dennis and Associates, taught at Syracuse University, and was employed by Leung Hemmler Camayd in Scranton.

The Hillier Group has announced that **Scott Erdy** (B. Arch. '90) has been named director of design for the firm's Philadelphia office. A multi-award-winning designer with the firm for six years, Erdy has been responsible for a number of major projects including corporate headquarters for American Home Products and Bristol-Myers Squibb, as well as smaller projects such as housing for the physically challenged, a child care center prototype, the U.S. Embassy in Caracas and the Latvia National Library. He was instrumental in opening the firm's Kansas City Office in 1990 with an award-winning corporate headquarters for Marion Merrill Dow. Erdy's new responsibilities will be to oversee the design of all the architecture and interior design projects in the Philadelphia office and to serve in the firm's Leadership Group.

Kevin Sloan (M. Arch. '92) has recently joined the Hillier Group Dallas Office as vice president of Architecture and Urban Design. Before joining Hillier, Sloan was design director for urban design and planning for Helmut Obata & Kasselbaum (HOK) in Dallas. His professional employment followed a two-year teaching appointment at Syracuse, and he has also served as a visiting critic at the University of Dallas, University of Texas, and Cornell University.



Kevin Sloan

A number of recent graduates have relocated to the San Francisco area. **Jason A. Arth** (B. Arch. '93), **Francesco Crocenzi** (B. Arch. '94) and **Amornrit (Puck) Pukdeedamrongrit** (B. Arch. '94) all work for **Korth Sunseri Hagey**; **Mark R. Fritts** (B. Arch. '93) is employed by Design Group, Orna Meyer (B. Arch. '93) works for Robinson Mills and Williams, and **John R. (J.R.) Jones II** (B. Arch. '94) is with Gensler and Associates Architects. Also living and working in San Francisco are **Frances Lee** (B. Arch. '94) and **Marc Pfenninger** (B. Arch. '94).

John Burse (B. Arch. '94) has joined the St. Louis office of Hellmuth, Obata, and Kassabaum (HOK). Together with classmate **Dominick Hart**, Burse received an honorable mention in the Glenwood Town Square and Village Hall Design Competition.

Avril Farnsworth (B. Arch. '94) was among a group of six Philadelphia architects selected by a competition to create and display original ornaments on the official White House Tree last year. The competition was open to members of the American Institute of Architects and architecture students; the theme of the competition was "A Visit from St. Nicholas." Farnsworth was invited, along with other competition winners, to a special reception to view of the tree, which was located in the Blue Room of the White House. Farnsworth is employed by the Philadelphia firm Bower Lewis Thrower Architects.

Last summer, **Angel David Nieves** (B. Arch. '94) was on the staff of the Smithsonian Institute's Center for Folklife Programs and Cultural Studies. He coordinated an exhibit and catalogue on the multicultural Latino immigrant community of Mt. Pleasant-Adams Morgan titled *El Barrio: Everyday Life in Mt. Pleasant*. He completed an M.A. in anthropology at SUNY Binghamton last spring, and in fall, began doctoral work at Cornell University's College of Architecture, Art, and Planning in the History of Architecture and Urban Development Program.



Is Bank Headquarters Complex
in Istanbul, Turkey
Swanke Hayden Connell

REUNION '96



Two Architects Recognized at Reunion '96

Reunion '96 welcomed School of Architecture graduates from past years and brought together two outstanding alumni to be recognized at the Dean's Breakfast. Awards were presented to William Scarbrough '56 and Richard Gluckman '71.

Scarbrough, who retired recently, was honored as an emeritus faculty member. A significant contributor to the technologies curriculum during his years at the school, Scarbrough headed the technical design faculty. In addition to being a respected designer, he is well-liked for his keen sense of humor and outgoing personality. Colleagues credit him with helping to establish camaraderie among faculty, especially with newer members.

A New York State-licensed architect since 1960, Scarbrough began his teaching career as a design critic. Although he taught design throughout his career at Syracuse, his interest in architectural technologies and energy efficiency eventually led him to focus on the technical design curriculum. He has also been an active member of the Central New York architectural community and was a principal investigator for several community energy projects.

Gluckman is a successful architect in New York City who formed his firm, Richard Gluckman Architects, in 1977. A major component of the practice has been the design of art-related facilities. Gluckman has worked closely with many artists on specific art installations, including Dan Flavin, Walter DeMaria, Jim Turrell, Jenny Holzer and Richard Serra. He has received recognition and awards for several of his projects, including an AIA Honor Award and a Citation from the International Association of Lighting Designers for the Dia Center for the Arts in New York; an Award from Architectural Record Interiors for the Andy Warhol Museum in Pittsburgh; and a Gold Award from *I.D. Magazine* for the Gagosian Gallery. Recent activities include designing the Brancusi and Cezanne exhibitions for the Philadelphia Museum of Art, expansion of the Whitney Museum of American Art in New York, and serving as visiting critic for the Graduate School of Design at Harvard. Gluckman is a member of the advisory board for the School of Architecture and recently has served as a member of the planning committee for the Kermit J. Lee Jr. Endowment Committee.

The two award winners were happy to be honored together, each remarking that he was influenced by the other in some way.

"I had been teaching a long time when I had Richard as a student in the 1960s," Scarbrough said. "For me, one of the greatest pleasures of teaching was working with students like him. He has a natural talent for architecture."

When Gluckman studied under Scarbrough, the School of Architecture was changing; technical design was just beginning to be incorporated into the curriculum. Gluckman says he was impressed with Scarbrough not only as a teacher, but as an artist.

"He was my first exposure to someone who was both a technical design expert and a fine design artist," Gluckman says. "He really inspired me."

Professor Christopher Gray, head of the Undergraduate Program, presented Scarborough with his award, while Professor Randall Korman presented Gluckman's award. Graduating classes of both honorees were well-represented at the reunion. The Class of '56 had an especially good turnout, with alumni coming from as far away as Hawaii.

Other activities marking Reunion included the Half-Century dinner, class luncheons, the Arents Award dinner, and a farewell brunch on Sunday.

The following School of Architecture alumni attended the weekend's events: Class of 1951: Douglas A. Brown and Jerry Happek, Class of 1956: Jack Chun, Arthur F. Cutter Jr. (with Dorothy Cutter '54, A&S), Robert H. Gantner (with Anne Gantner), Paul J. Hueber (with Carol Hueber), Richard Lafferty (with Janece Lafferty), James E. Robinson III, William Scarbrough (with Carol Scarbrough), Kenneth Smiley, Keith Turner (with Barbara Turner '55, HUD), and Reuben Zane (with Shirley H. Zane and family); Class of 1964: John Mowry; Class of 1966: J. Michael Van Strander (with Anne Van Strander); Class of 1970: Paul Scoville; Class of 1971: Ann Chaintreuil (with Taylor Ann Chaintreuil), George Eaton, Richard Gluckman, Richard Pallone, and David Souers; Class of 1973: Darrel D. Rippeteau Jr.; Class of 1974: Dennis Spina; Class of 1976: Louise (Gersten) Agnes, Kenel J. Antoine, Robert Colonnese (with Connie Hogan), Peter L. Morse, and David J. Wildnauer (with Meg Kundert); Class of 1986: Karin Kilgore Green, Mark Porterfield (with Robyn Rosenburg), and Alice Raucher; Class of 1989: George Green and Thomas Stack; Class of 1991: Jeannine Tayler-Stack and Pamela Williams; and Class of 1994: Scott Perry.

SCHOOL OF ARCHITECTURE
SYRACUSE UNIVERSITY
103 SLOCUM HALL
SYRACUSE, NEW YORK 13244-1250



*Adirondack Lodge
Joel Bostick, Architect*

LECTURE SERIES 1996-97

Spring 1997

January 29	"Recent Work"	Werner Kreis Architect, Switzerland
February 5	"30 Years in the Craft of Building"	Laureano Forero Architect, Colombia
February 20 - 22	Symposium	"Die Neue Einfachheit" "The New Simplicity" Hans Kollhoff Vittorio Lampugnani
February 26	"Differences: Topography of Contemporary Architecture"	Ignasi Sola-Morales Architect, Barcelona
March 19	"Theoretical Practice"	David Chipperfield Architect, London
March 26	"Mass in the Age of Media"	Peter Wilson Bolles Wilson Partnership, Munster Germany
April 2	"Functionalism and the Avantgarde"	Robert Maxwell Architect and critic, London
April 9	"Telling Stories"	Michael Graves Architect, Princeton

ALL LECTURES, UNLESS OTHERWISE NOTED, ARE AT 6:00 PM IN THE SUE ANN GENET AUDITORIUM, ROOM 108, SLOCUM HALL
FOR INFORMATION CONTACT: SYRACUSE UNIVERSITY SCHOOL OF ARCHITECTURE, 103 SLOCUM HALL, 315-443-2256