

Syracuse University

**SURFACE**

---

School of Architecture - Theses

---

Spring 2009

## Architecture Thesis, 2009-Paul Miller: The Lobby volume 2

Paul Miller

Follow this and additional works at: [https://surface.syr.edu/arc\\_etd](https://surface.syr.edu/arc_etd)



Part of the [Architecture Commons](#)

---

### Recommended Citation

Miller, Paul, "Architecture Thesis, 2009-Paul Miller: The Lobby volume 2" (2009). *School of Architecture - Theses*. 4.

[https://surface.syr.edu/arc\\_etd/4](https://surface.syr.edu/arc_etd/4)

This Thesis is brought to you for free and open access by SURFACE. It has been accepted for inclusion in School of Architecture - Theses by an authorized administrator of SURFACE. For more information, please contact [surface@syr.edu](mailto:surface@syr.edu).

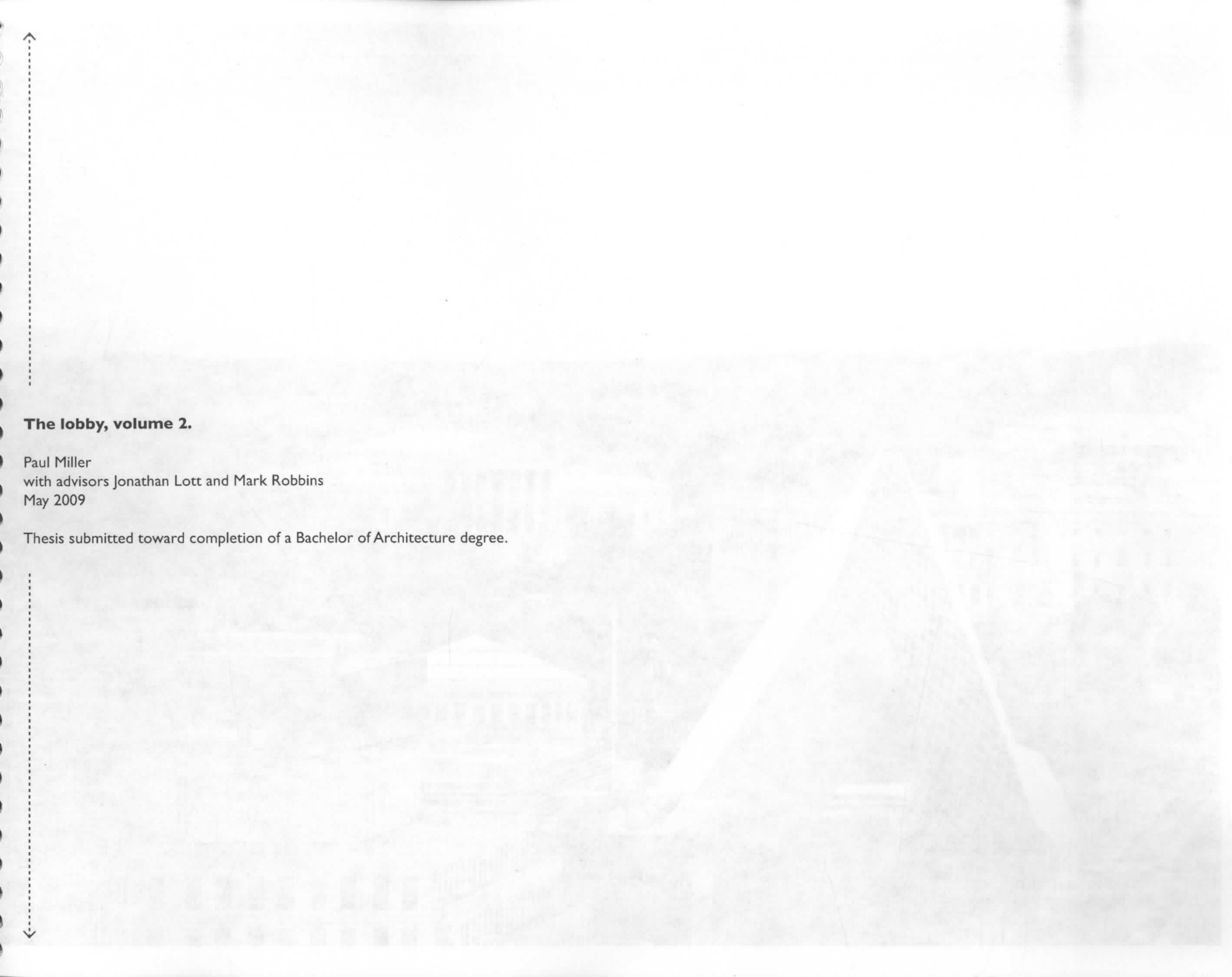
*The lobby.*

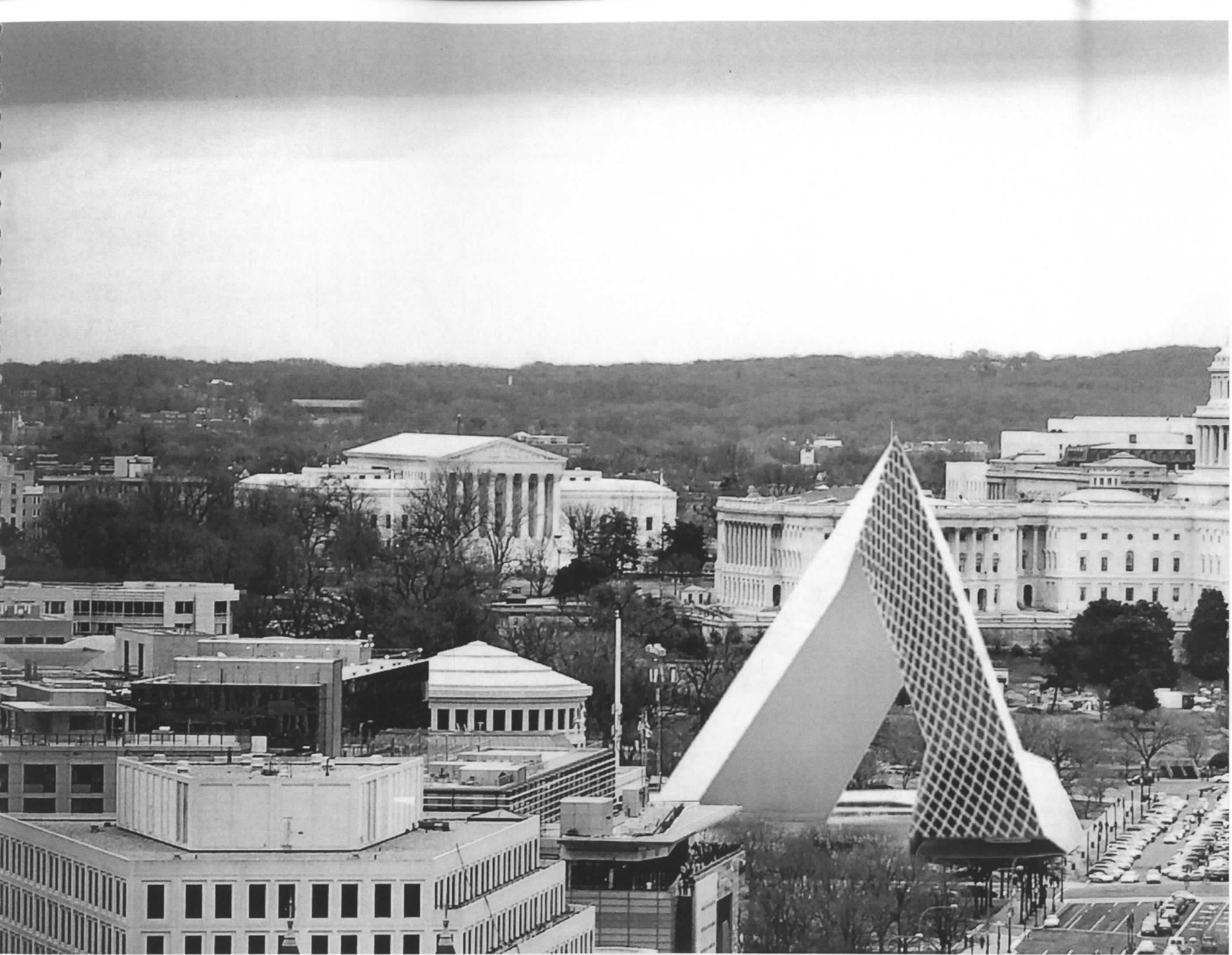


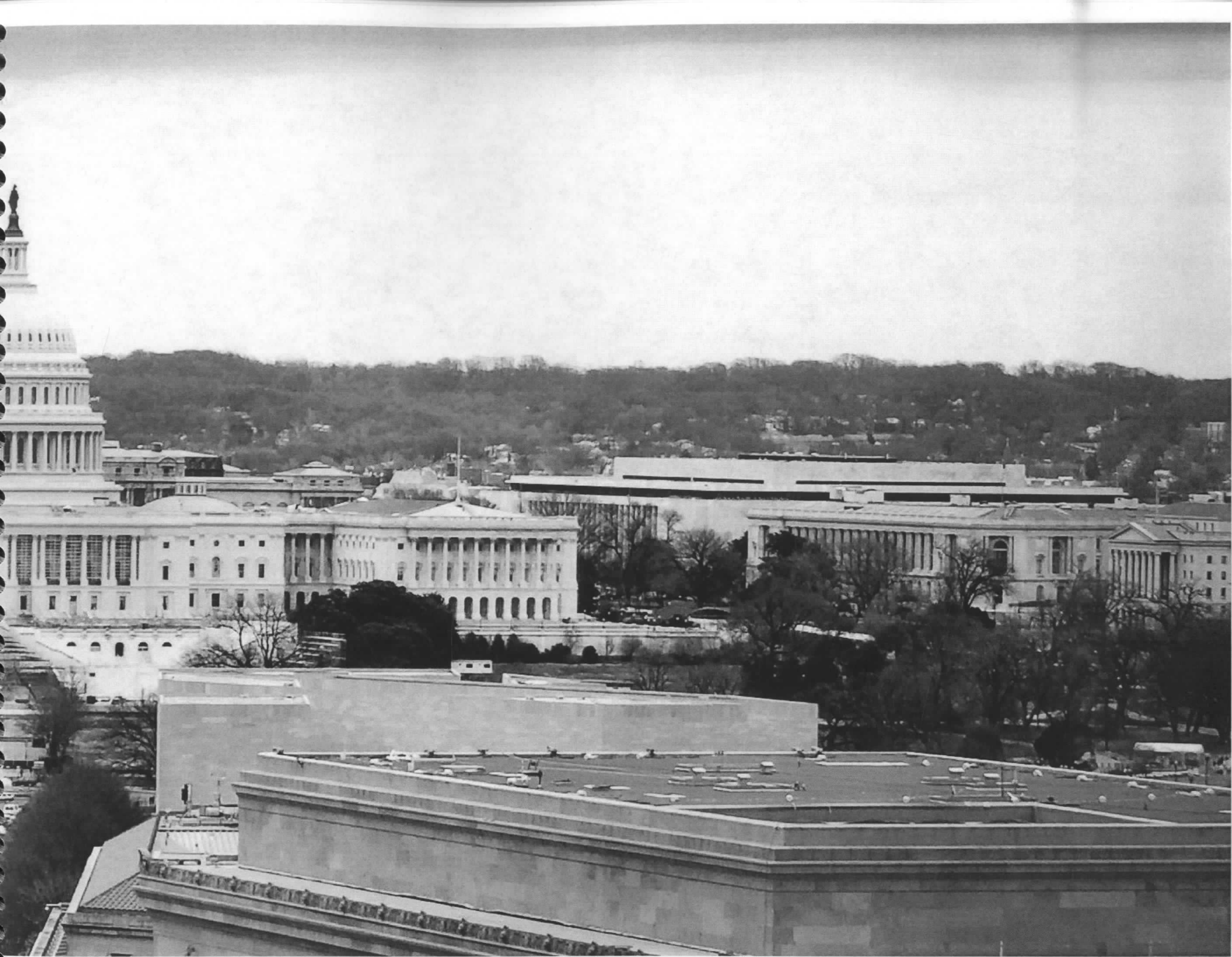
**The lobby, volume 2.**

Paul Miller  
with advisors Jonathan Lott and Mark Robbins  
May 2009

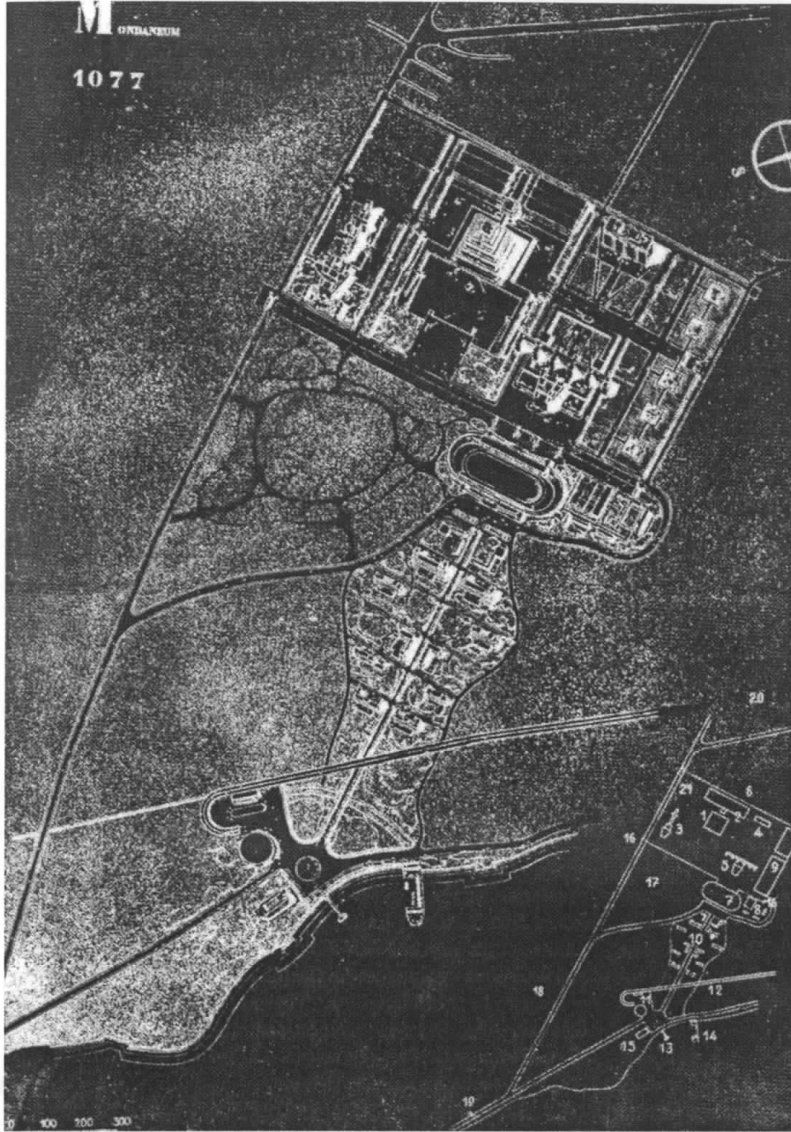
Thesis submitted toward completion of a Bachelor of Architecture degree.







Knowledge is power \*



Le Corbusier's plan for the Mundaneum

should have served as a model for a total build of knowledge. With that knowledge, access to the kind of knowledge that you can't get from books. You don't know



**\* If you control it**

There have been many projections of a utopian society where all should have access to humanity's total body of knowledge. With that knowledge, the people would be granted power. But, in fact, not many have access to the kind of knowledge that produces power, and many who do don't know how to use it. Knowledge is only power if you control it.





Spine doctors, crisis managers, campaign handlers, image enhancers  
in Washington DC, a privileged group of political consultants, the lobbyists, have slowly and steadily gained a tremendous amount of power through  
their control of information needed by private citizens, corporations, and elected officials. Always the middleman, the lobbyist constantly mediates the  
party that wants something and the other that can give it to them.

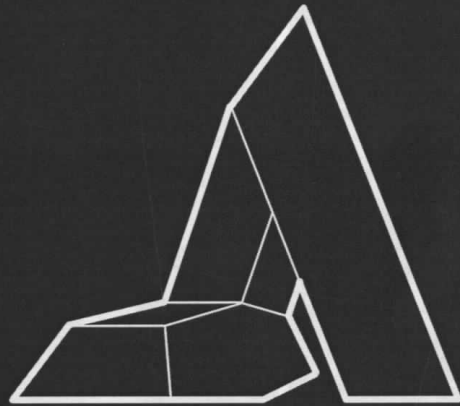
A ← Lobbyist → B

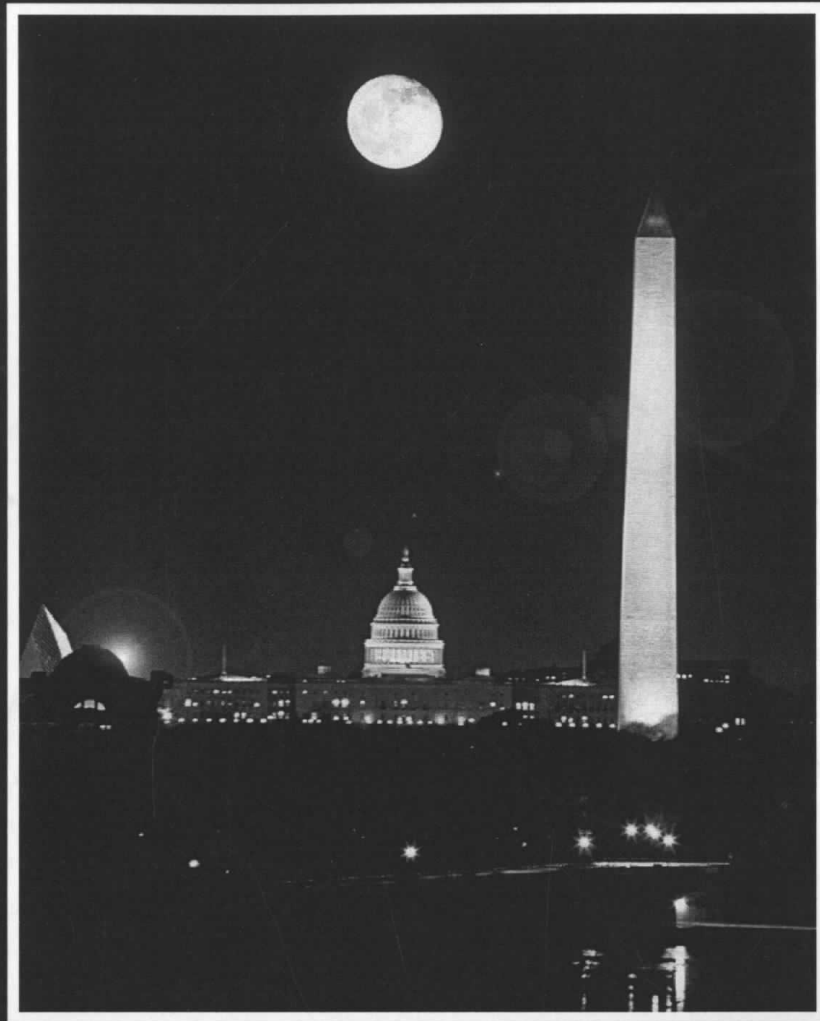
Spin doctors, crisis managers, campaign handlers, image enhancers

In Washington DC, a privileged group of political consultants, the lobbyists, have slowly and steadily gained a tremendous amount of power through their control of information needed by private citizens, corporations, and elected officials. Always the middleman, the lobbyist constantly mediates the party that wants something and the other that can give it to them.

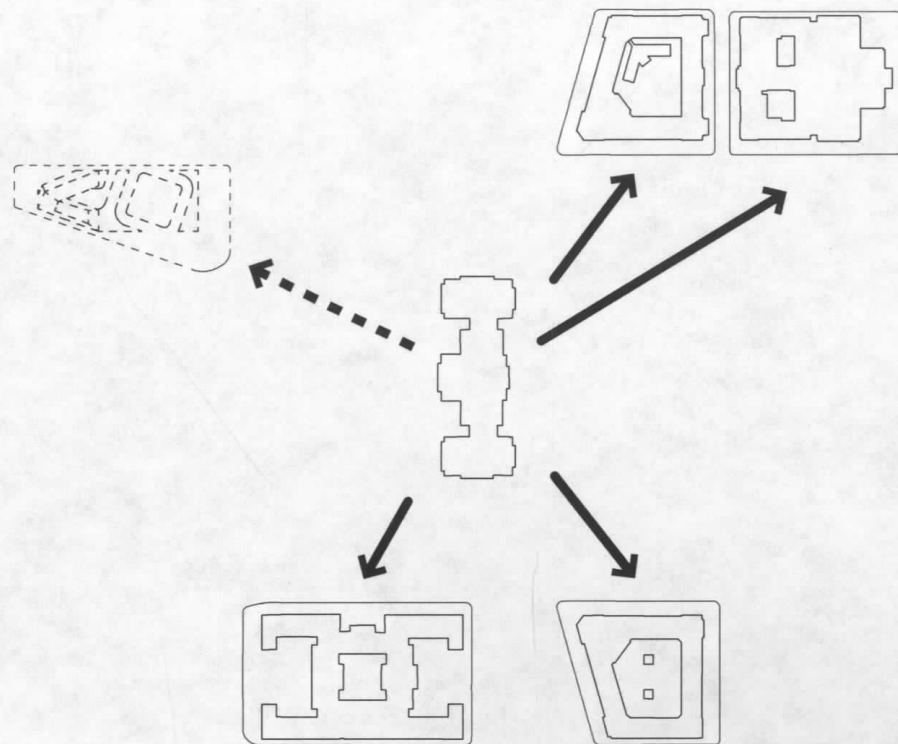


\$





*Plugged-in; the Lobby at night*



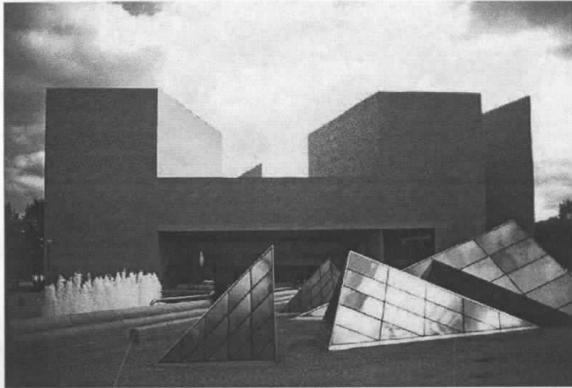
### From K Street to Constitution

Currently housed in generic office space near K Street, there is no architectural presence of lobbyists where they do most of their business. More than two miles from the Capitol building, they make their home far from where power is represented in Washington. The lobby proposes to physically plug these middlemen into the system they already have much control over, simultaneously giving them presence, acknowledging their access, and revealing their control.





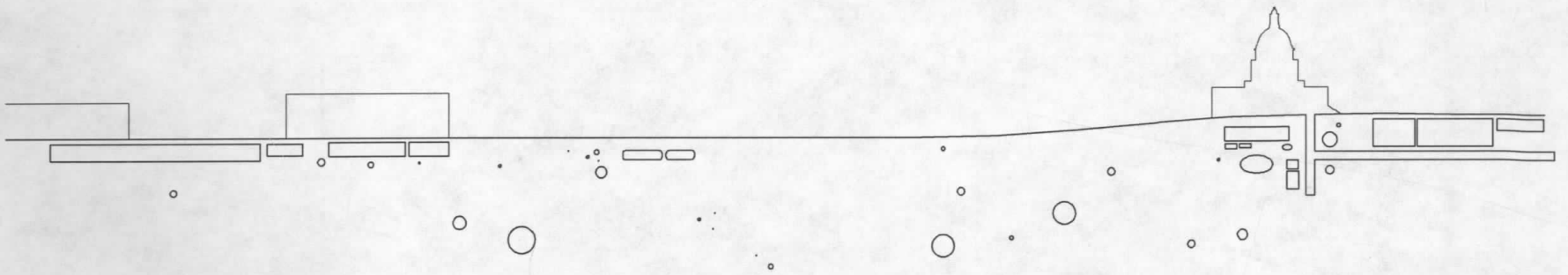




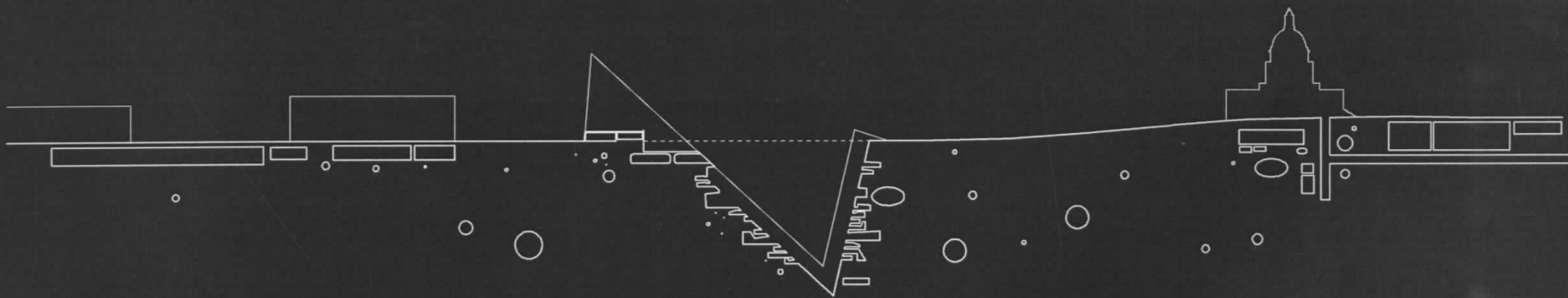


what we know

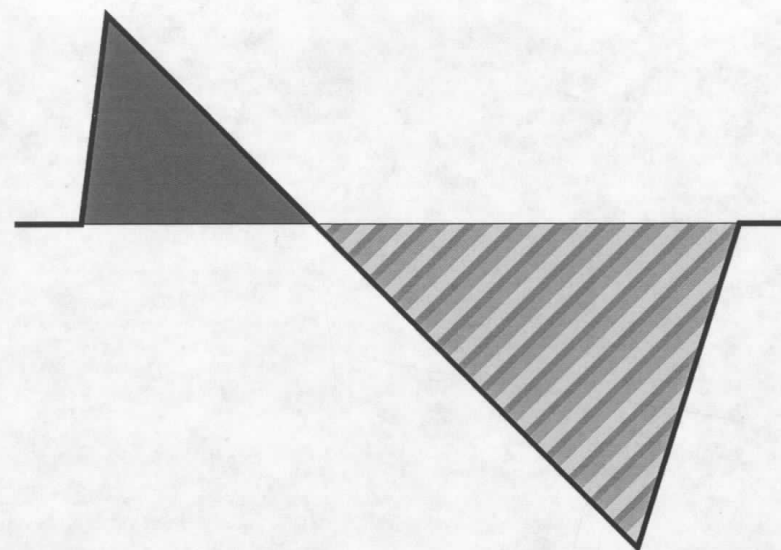
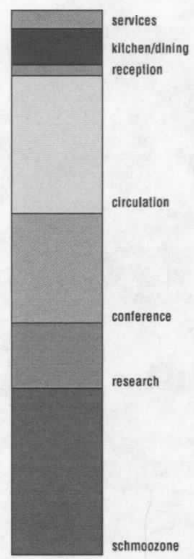
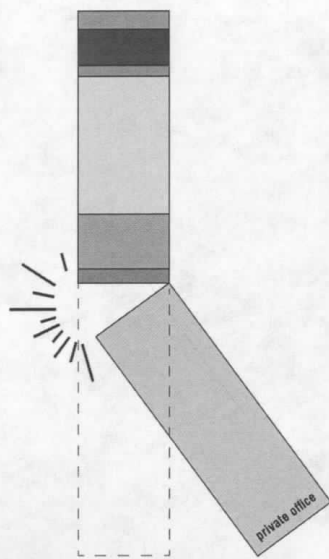


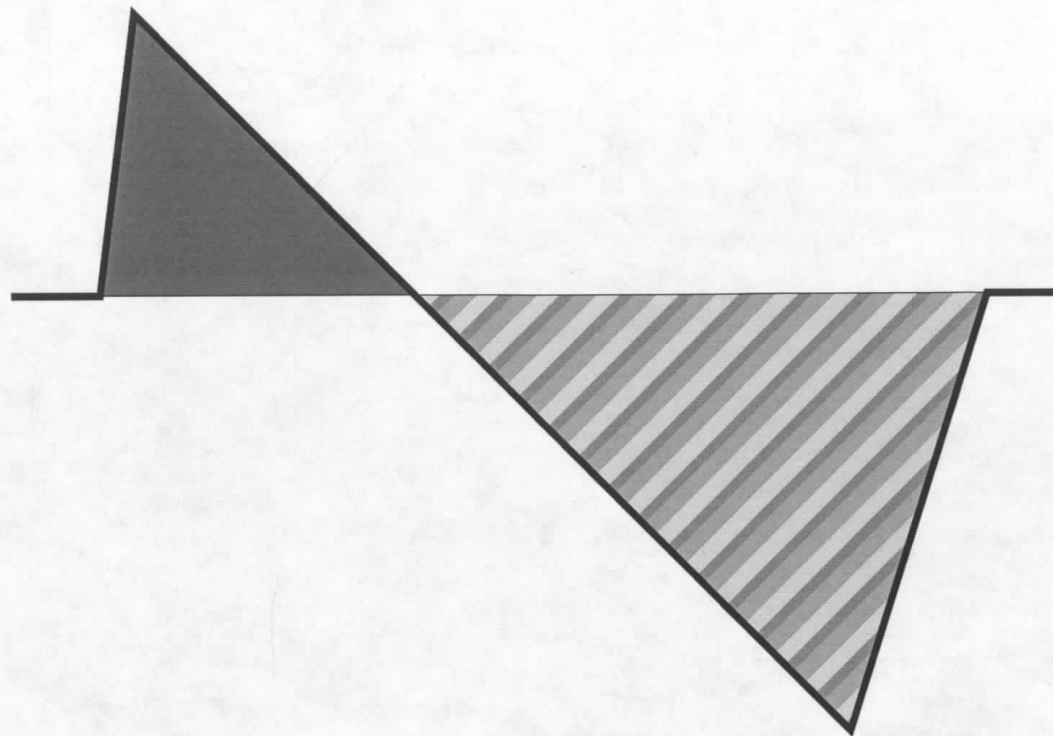


what we imagine

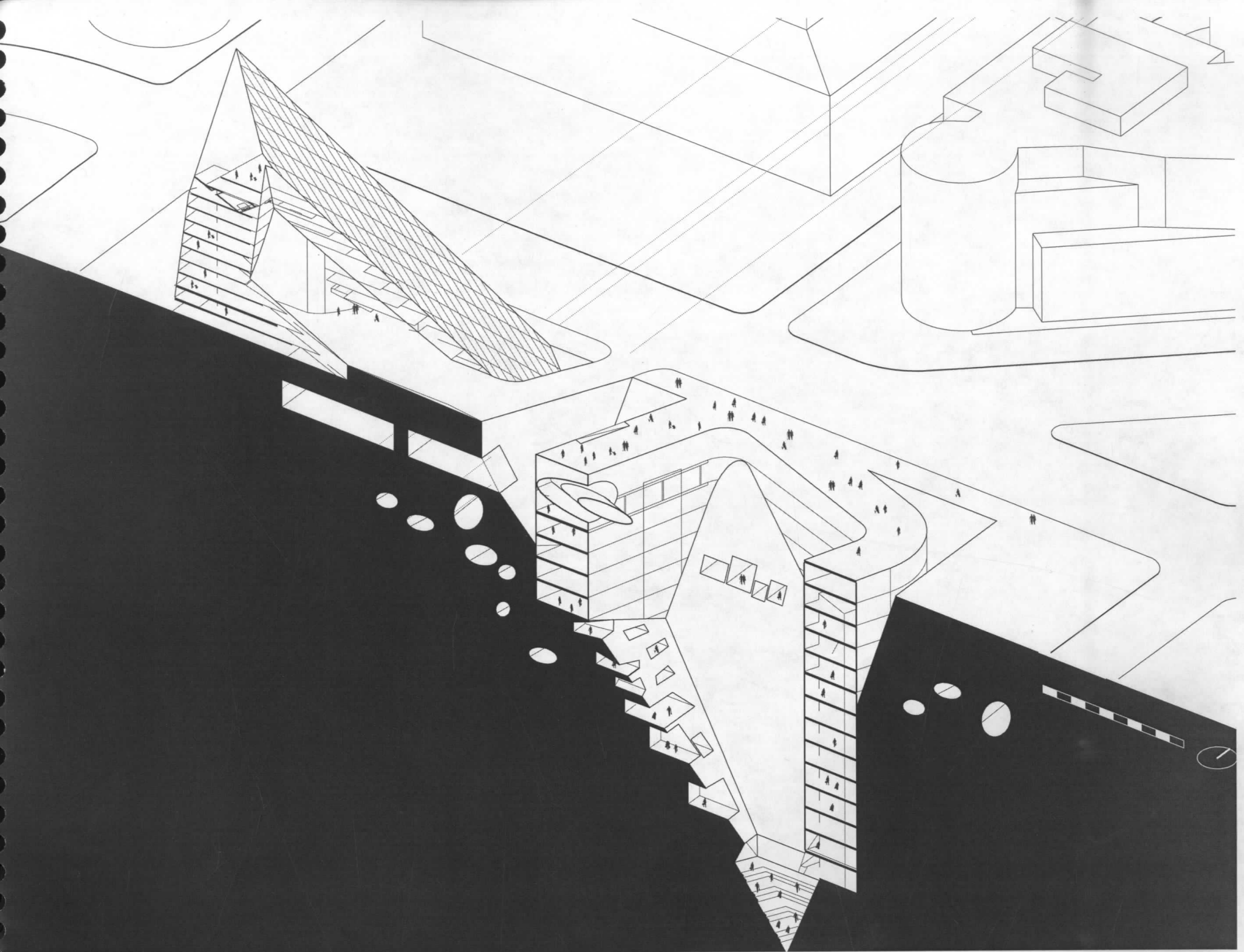


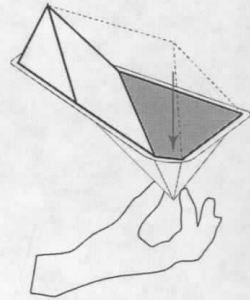
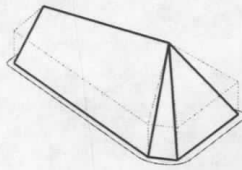
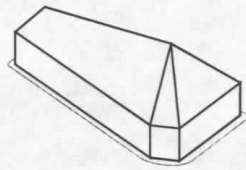
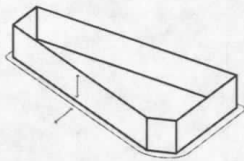
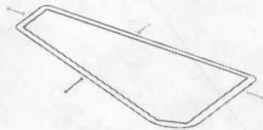
the lobby

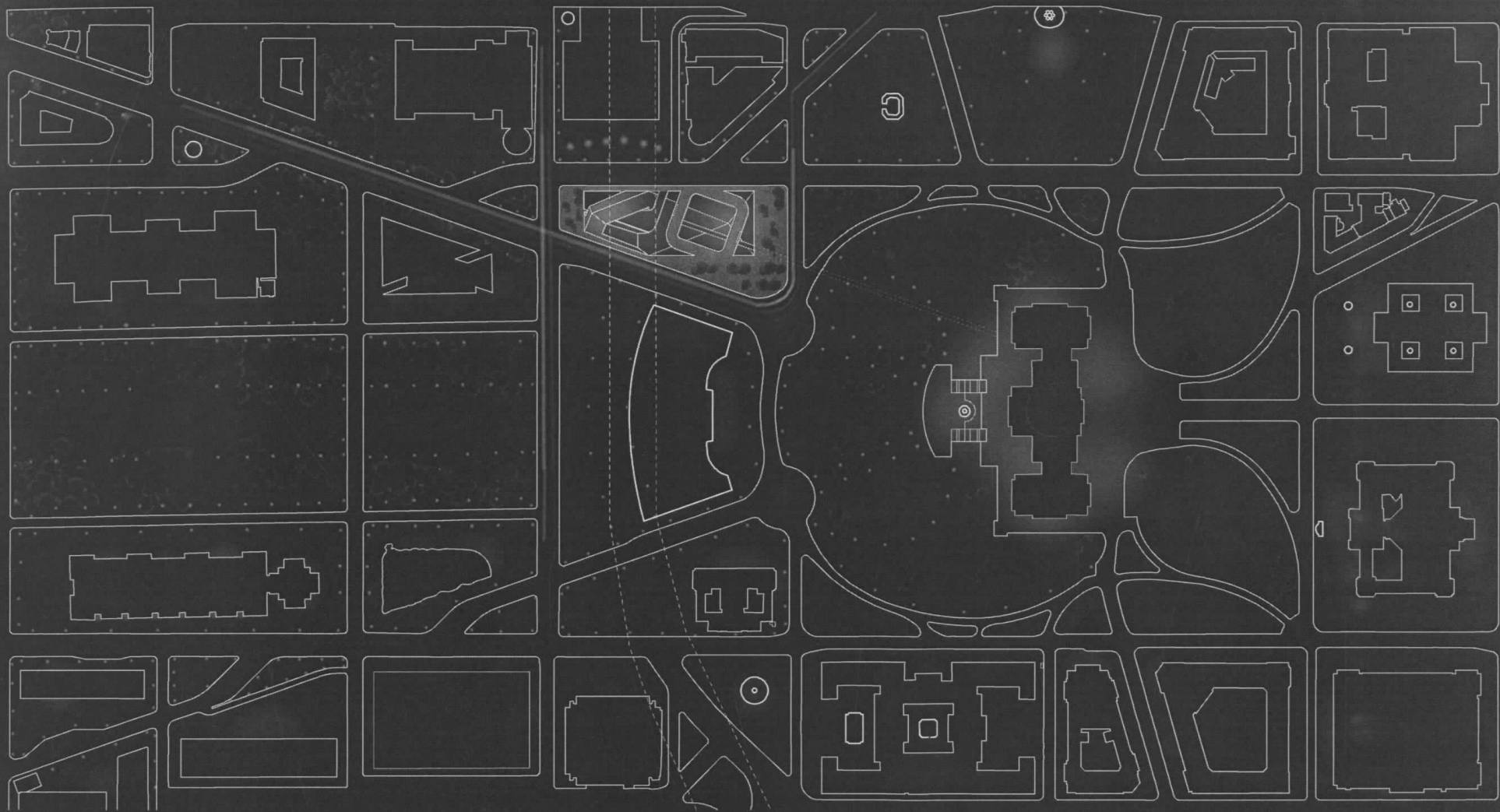






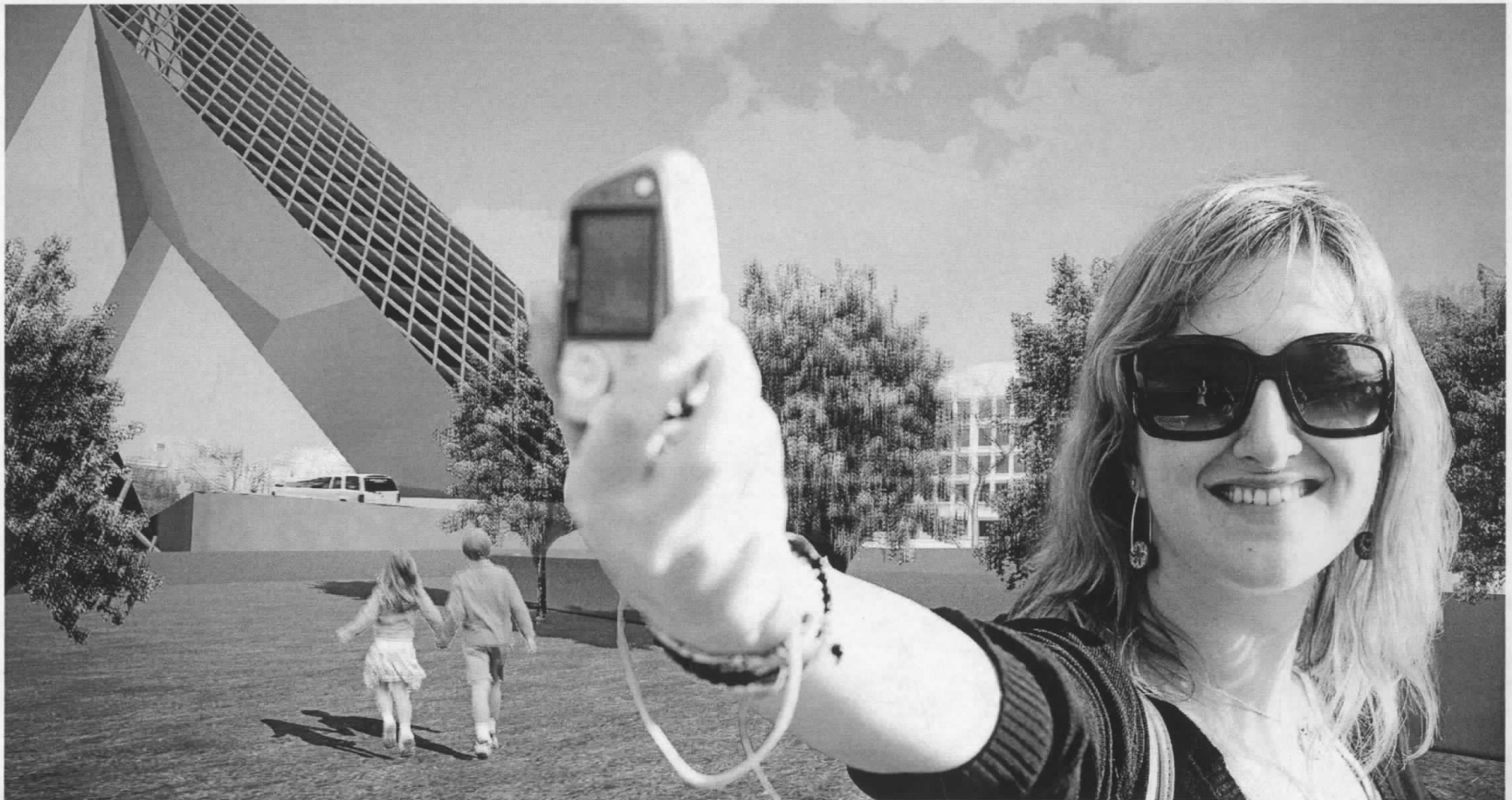


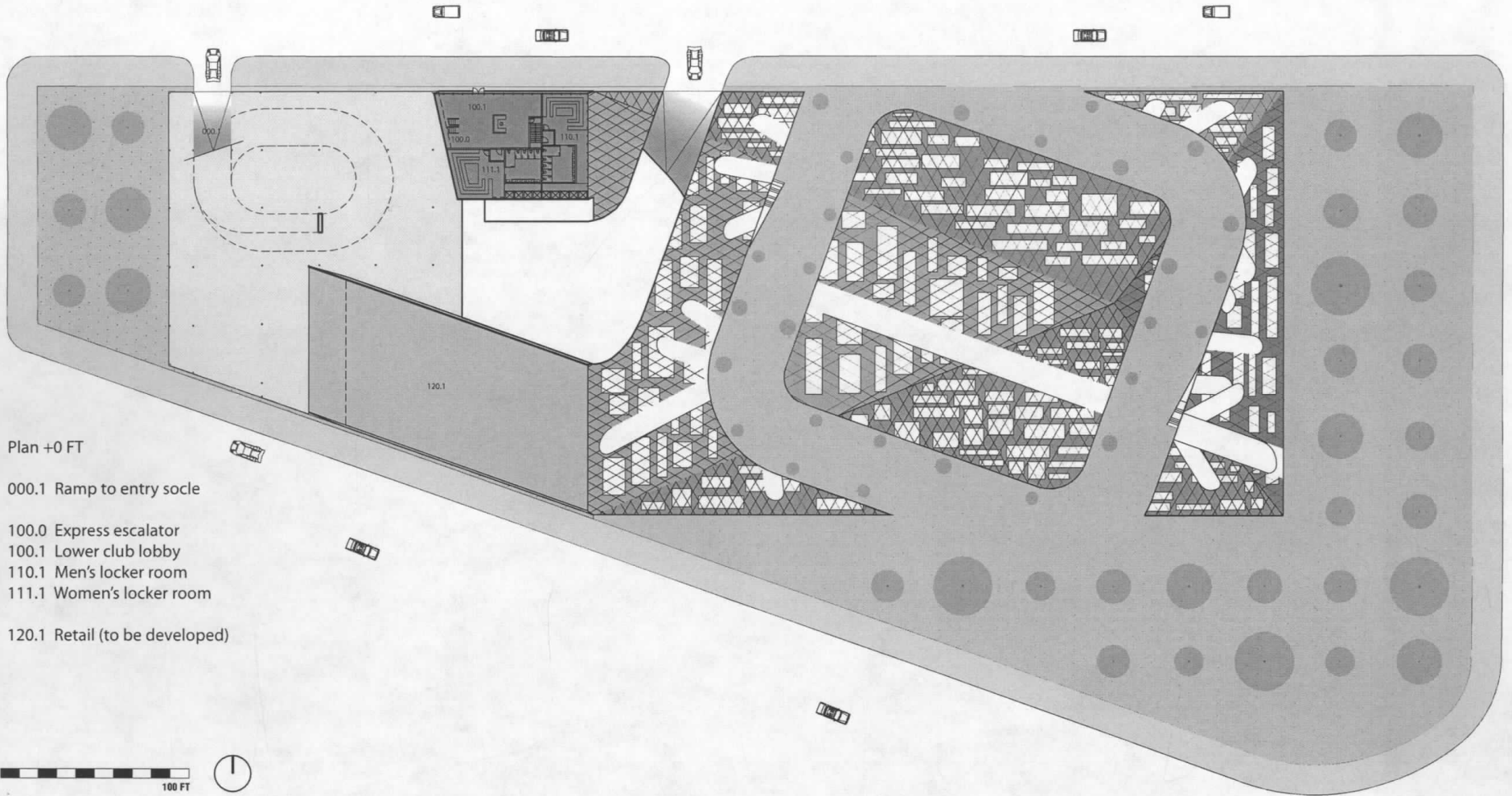






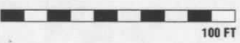






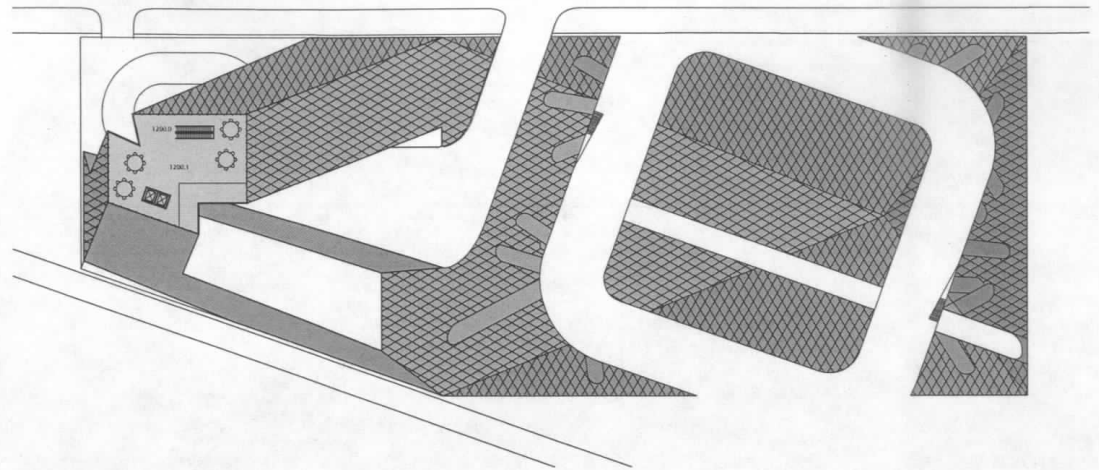
Plan +0 FT

- 000.1 Ramp to entry socle
- 100.0 Express escalator
- 100.1 Lower club lobby
- 110.1 Men's locker room
- 111.1 Women's locker room
- 120.1 Retail (to be developed)



Plan +120 FT

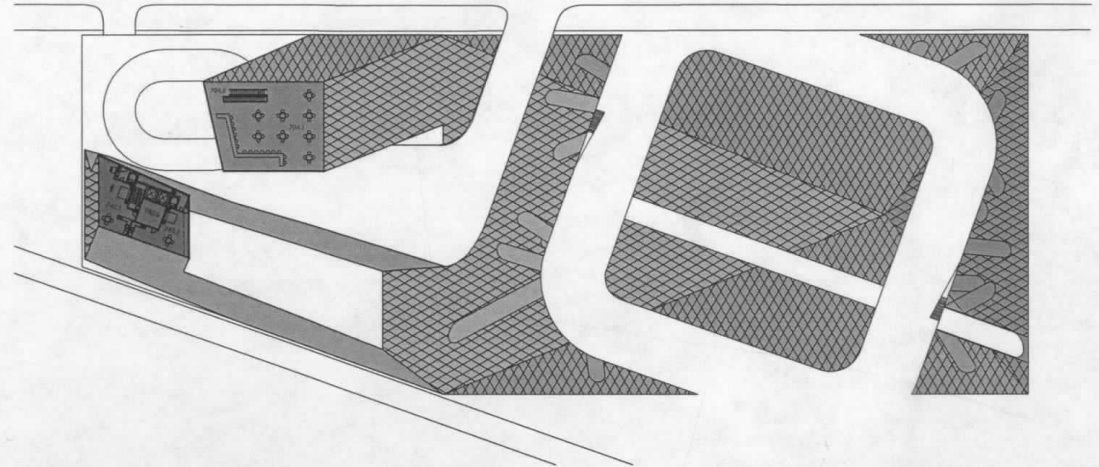
1200.0 Express escalator  
1200.1 Upper Ballroom Floor



Plan +74 FT

704.0 Express escalator  
704.1 Bar

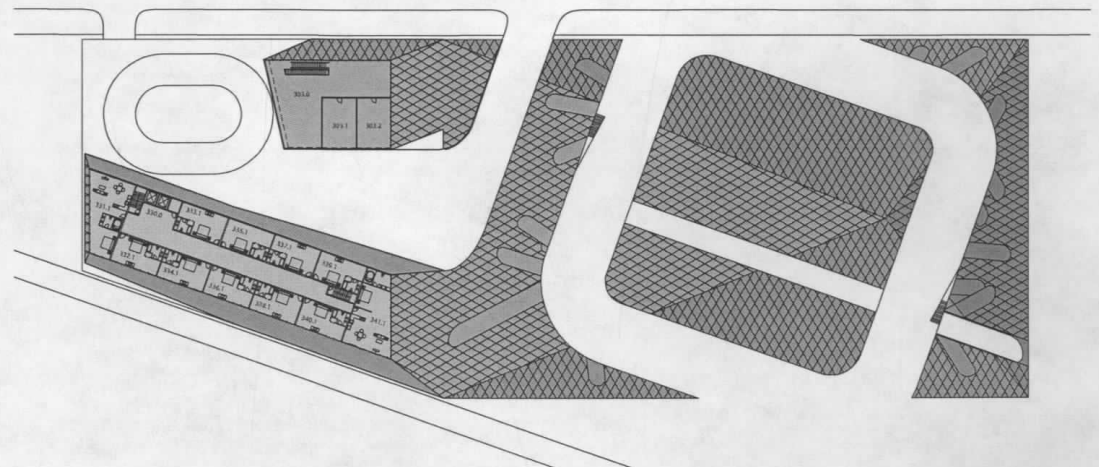
740.0 Circulation core  
740.1 Suite 741  
740.2 Suite 742



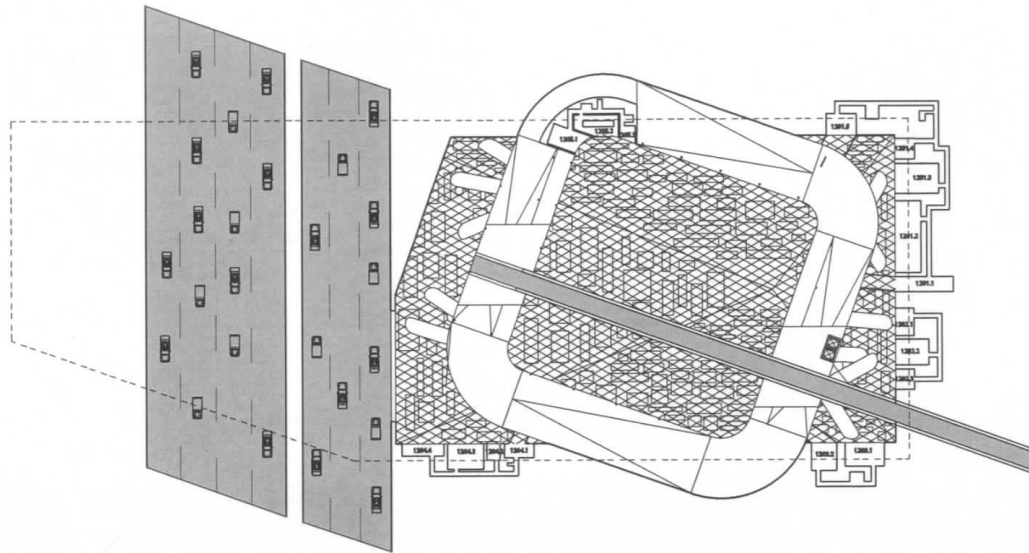
Plan +33 FT

303.0 Viewing Gallery  
303.1 Squash Court 3 (below)  
303.2 Squash Court 4 (below)

330.0 Circulation core  
331.1 Suite 331  
332.1 Room 332  
333.1 Room 333  
334.1 Room 334  
335.1 Room 335  
336.1 Room 336  
337.1 Room 337  
338.1 Room 338  
339.1 Room 339  
340.1 Room 340  
341.1 Suite 341

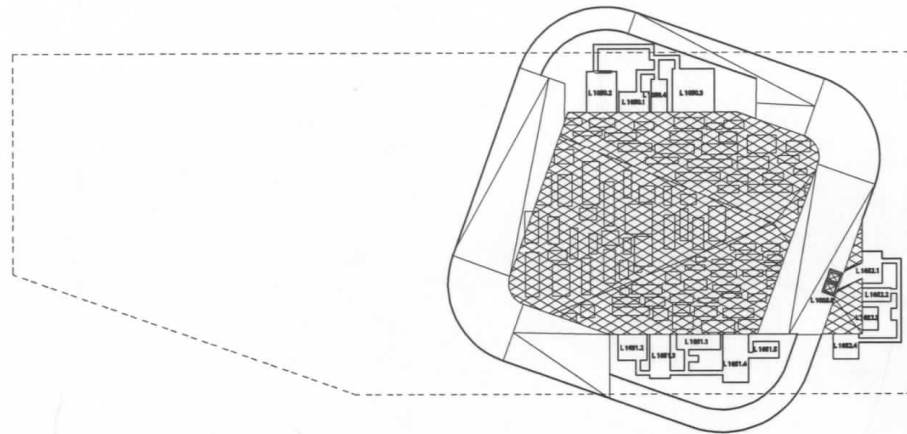






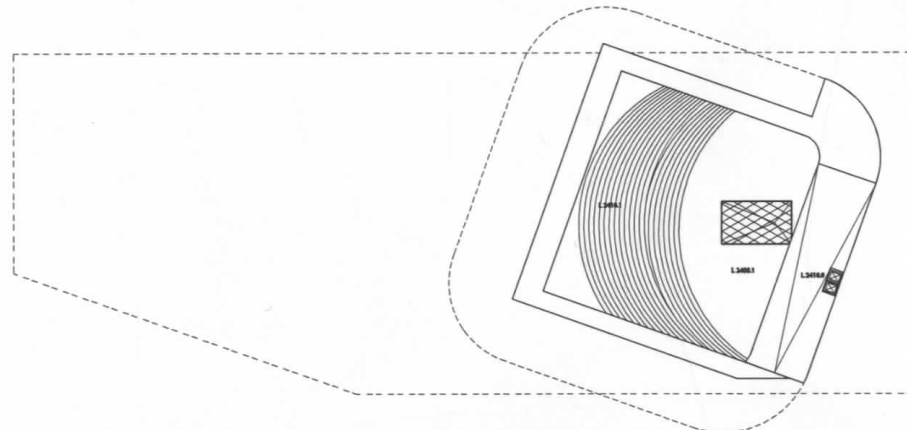
Plan +120 FT

- 1201.1 Office 22 reception
- 1201.2 0.22 conference room
- 1201.3 0.22 conference room
- 1201.4 0.22 conference room
- 1201.5 0.22 conference room
  
- 1202.1 Office 23 reception
- 1202.2 0.23 conference room
- 1202.3 0.23 conference room
  
- 1203.1 Office 24 reception
- 1203.2 0.24 conference room
  
- 1204.1 Office 25 reception
- 1204.2 0.25 conference room
- 1204.3 0.25 conference room
- 1204.4 0.25 conference room
  
- 1205.1 Office 26 reception
- 1205.2 0.26 conference room
- 1205.3 0.26 conference room



Plan -105 FT

- L 1050.1 Office 37 reception
- L 1050.2 0.37 conference room
- L 1050.3 0.37 conference room
- L 1050.4 0.37 conference room
  
- L 1051.1 Office 38 reception
- L 1051.2 0.38 conference room
- L 1051.3 0.38 conference room
- L 1051.4 0.38 conference room
- L 1051.5 0.38 conference room
  
- L 1052.1 Office 39 reception
- L 1052.2 0.39 conference room
- L 1052.3 0.39 conference room
- L 1052.4 0.39 conference room
  
- L 1053.0 Circulation core



Plan -240 FT

- L 2400.1 Assembly stage (below)
- L 2410.0 Circulation core
- L 2410.1 Balcony

