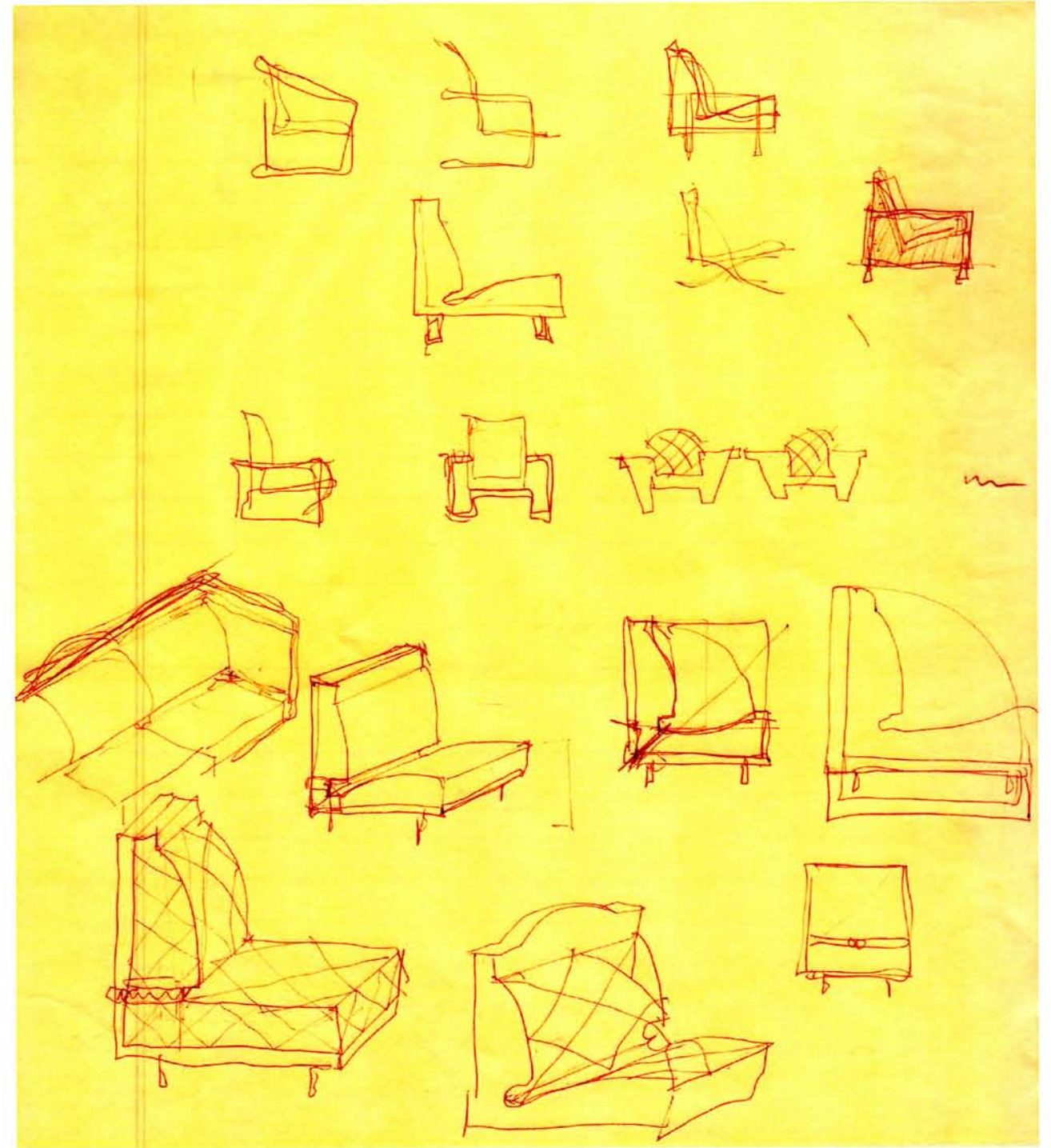


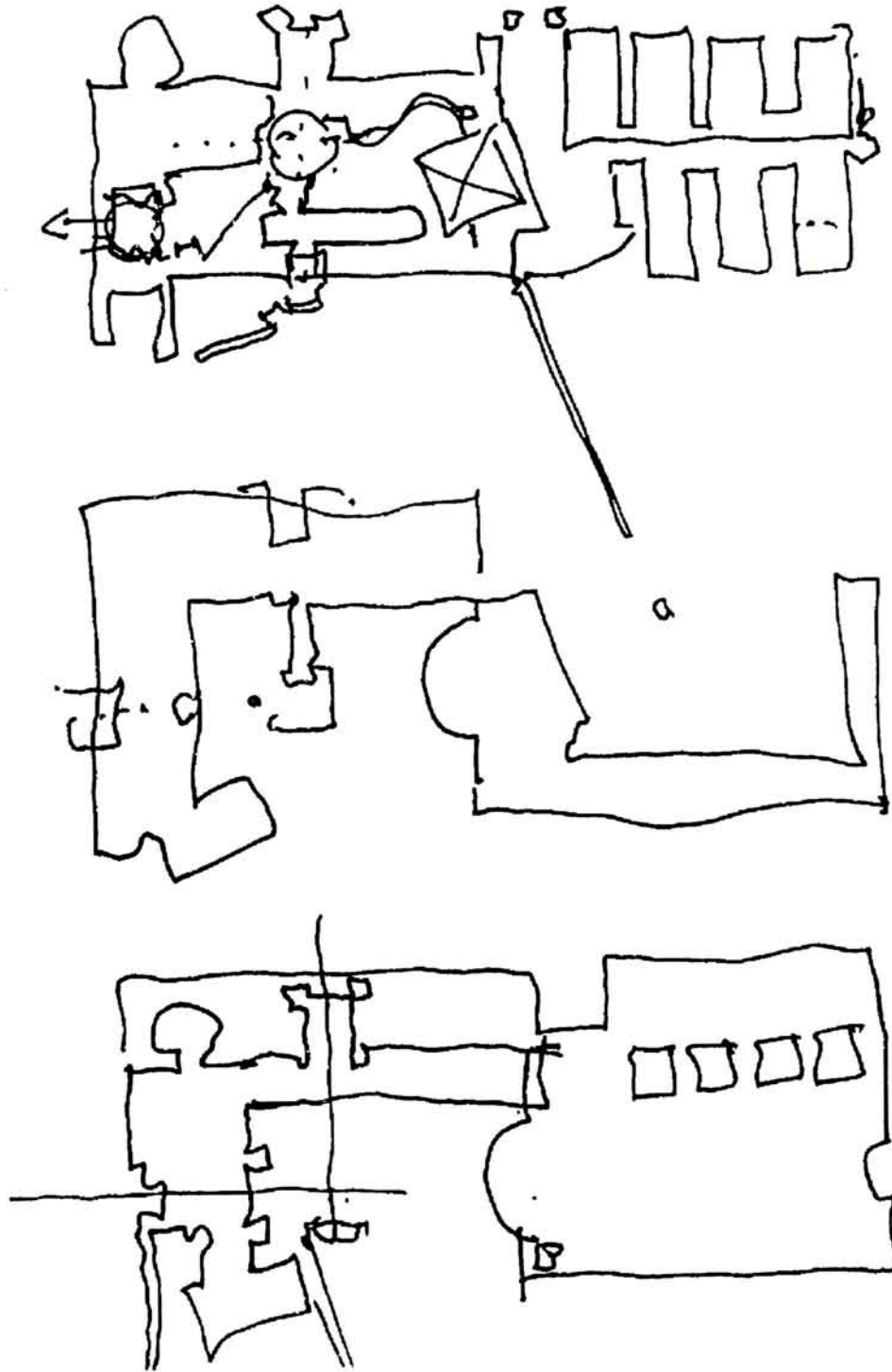
Miscellaneous Drawings

The chair studies are part of many sketches for furniture that have been done over the years. The modernist ideal of the manipulation of line to describe space for the body to occupy was an early theme. There remains always the question of proportion and the space between objects.

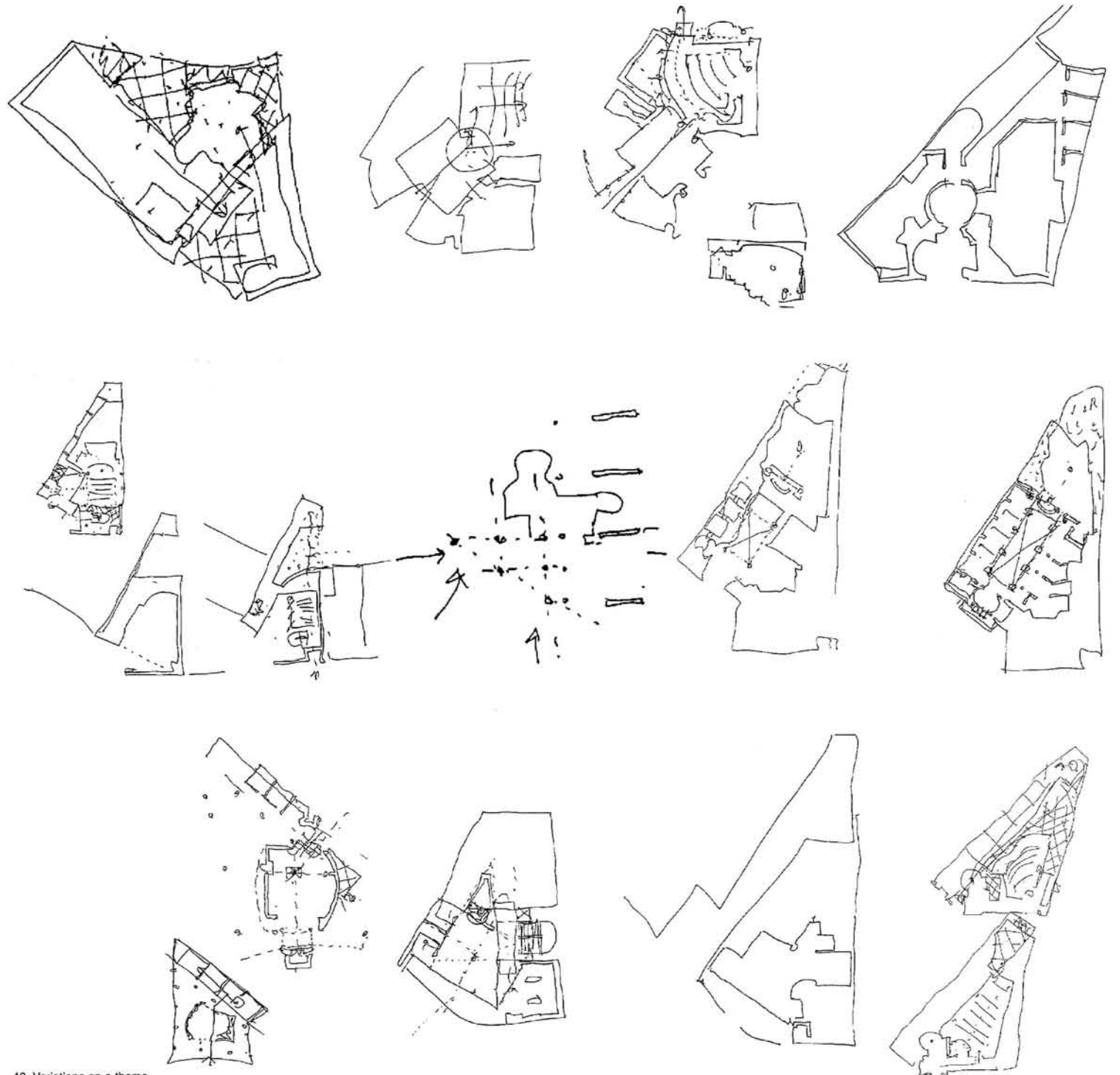
The parti drawings reflect the heritage of the Ecole des Beaux Arts design methodology. The capacity to summarize in a single drawing the salient features of a design was a highly desired ability. While generalized, the drawing suggested a spatial organization that was organized hieratically.

The following drawings (45 and 46) are from the design studio and are included to show the relationship between the freehand sketches and architectural diagrams. The issues are similar, in that the use of line and contour are manipulated to organize program relationships, procession, site configuration and structural notation by a variety of compositional strategies.





45. Parti diagrams for a library



46. Variations on a theme